



**INSTITUTE OF AGING**  
**EXTERNAL ADVISORY BOARD**  
**NOVEMBER 9, 2011**

**STEVEN J. FLUHARTY, PHD**  
**SENIOR VICE PROVOST FOR RESEARCH**  
**PROFESSOR OF PHARMACOLOGY, PSYCHOLOGY AND**  
**NEUROSCIENCE**

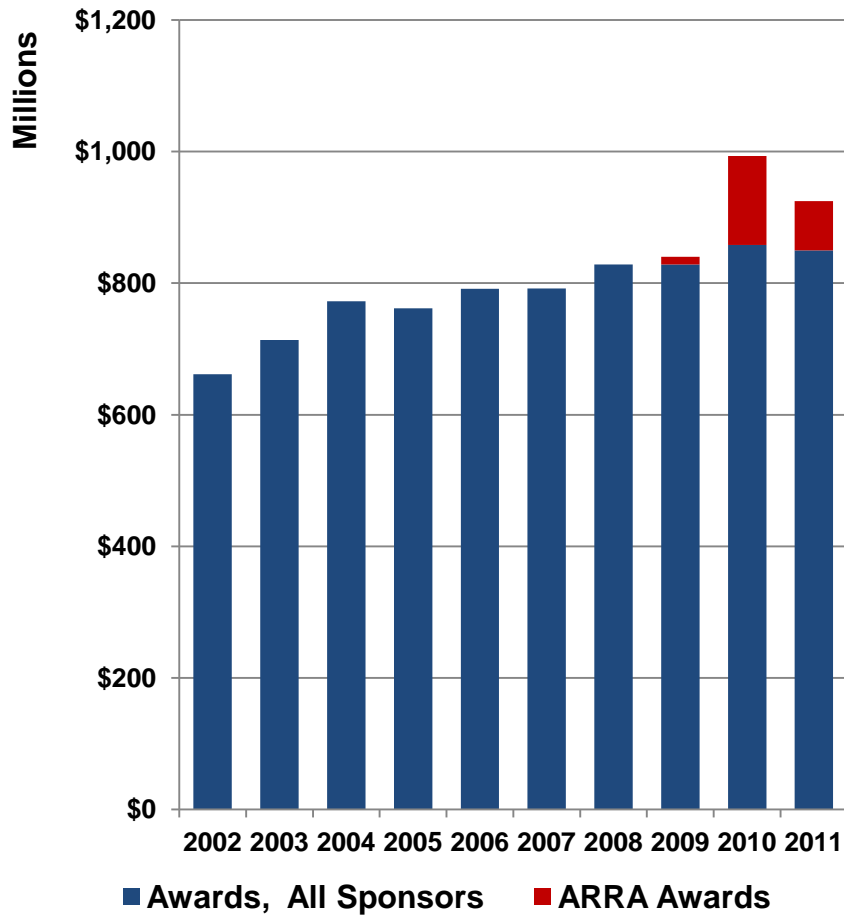
# RESEARCH ENTERPRISE FACTS AND FIGURES

---

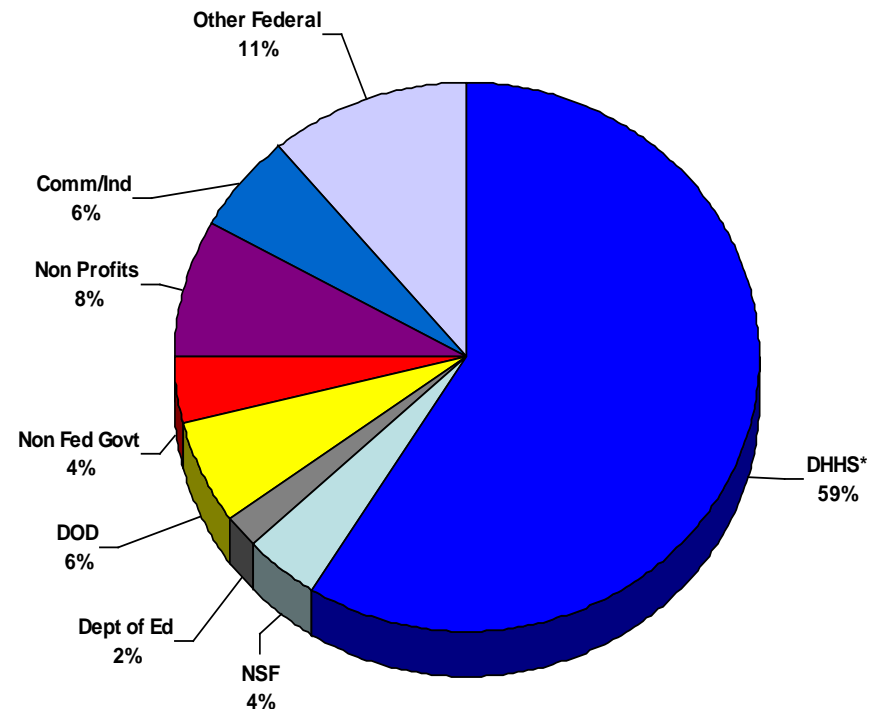
- **A “Tier One” research university**
  - More than ~\$991 million in total grants and contracts awarded in FY2011
  - Penn ranked #2 in the nation in NIH funding awards in 2010
- **Select facts**
  - 12 undergraduate, graduate and professional schools
  - Integrated health system
  - > 4200 faculty
    - > 1900 PSOM investigators
  - > 4,000 active awards
  - > 160 multidisciplinary centers & institutes
- **Single Portal for Penn Research**
  - Senior Vice Provost for Research charged with direct oversight of Penn’s research enterprise

# RESEARCH ENTERPRISE FACTS AND FIGURES

Total Awards



Awards by Sponsor Type

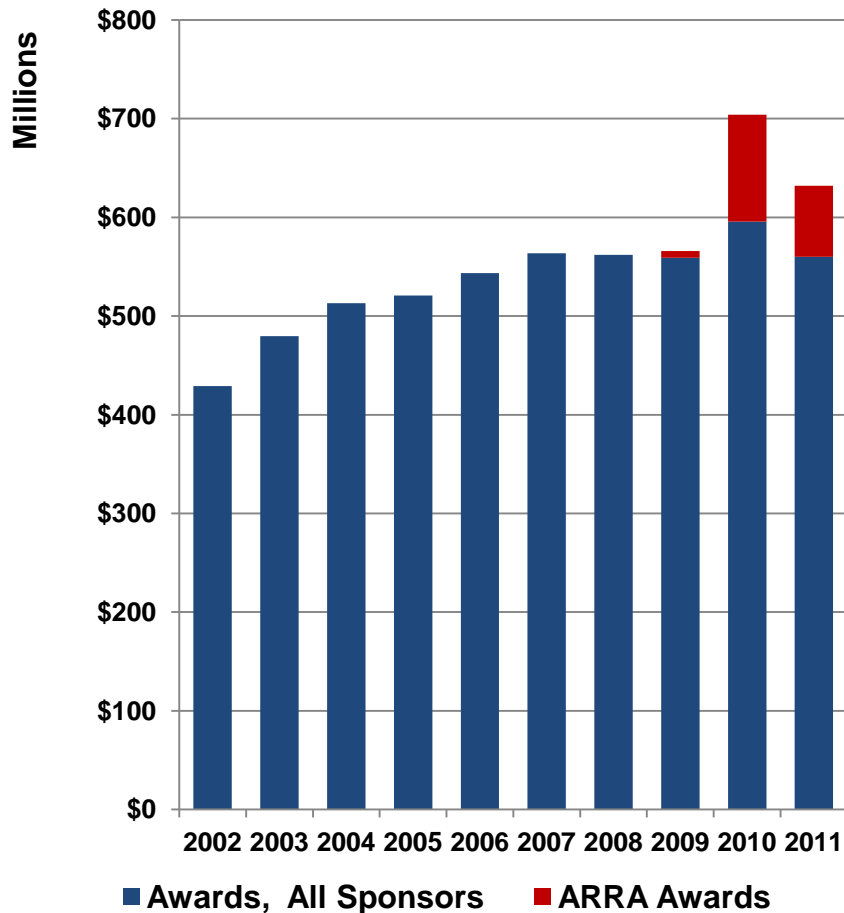


\*DHHS includes NIH, CDC, HRSA, AHRQ

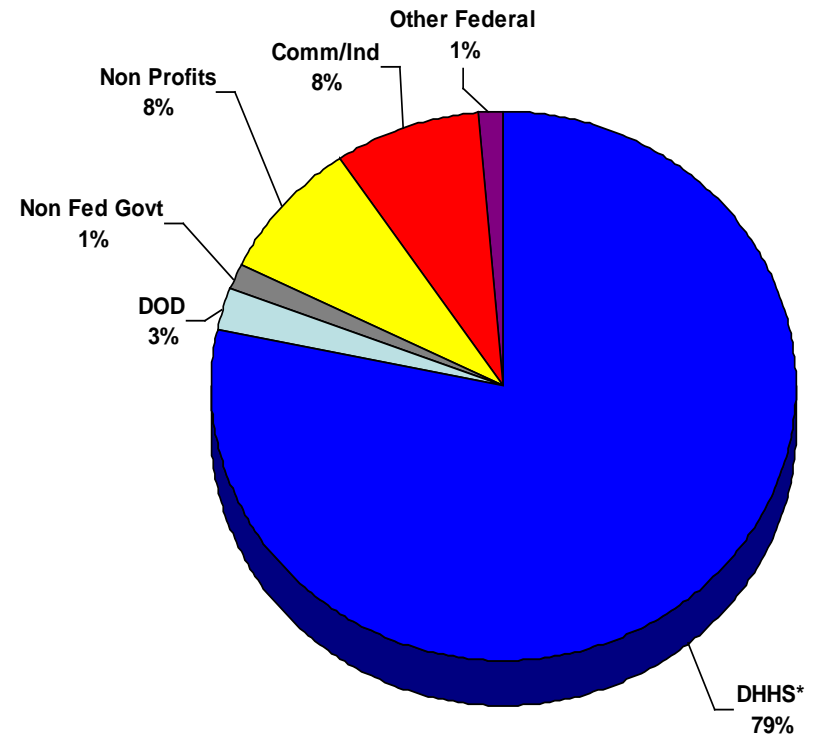
# PERELMAN SCHOOL OF MEDICINE

## FACTS AND FIGURES

Total Awards



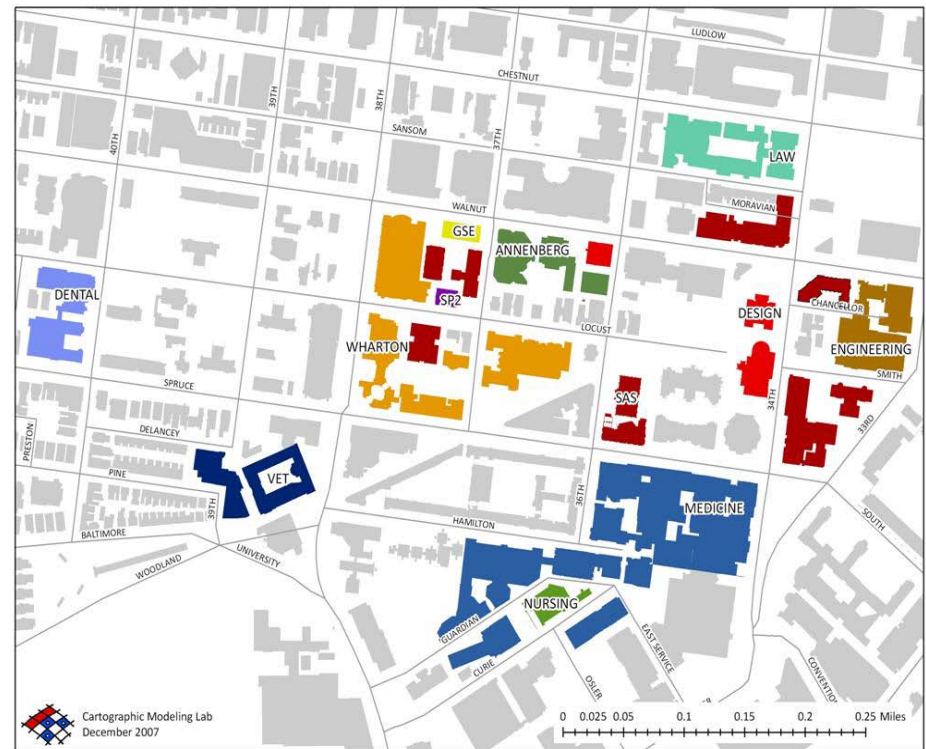
Awards by Sponsor Type



\*DHHS includes NIH, CDC, HRSA, AHRQ

# FOSTERING INTERDISCIPLINARY RESEARCH

- 6x8 block compact campus facilitates collaboration across all 12 schools
- Integrated health system provides access to associated clinical research collaborations
- Urban environment provides Penn with opportunities to engage community and business groups



**As a result, Penn has the some of the most unique and unmatched interdisciplinary Centers and Institutes in the world.**

# FOSTERING INTERDISCIPLINARY RESEARCH CENTERS AND INSTITUTES

---

## Centers and Institutes:

- Act as the cornerstone for integrating cutting edge collaborations across disciplines and traditional fields of research
- Provide the infrastructure to identify and respond to emerging research trends and opportunities
- Create opportunities to recruit talented scientists to advance Penn's research, education and health care delivery missions
- Serve as the home to many unique, prestigious cross-school investigators (PIK professors) that bridge multiple fields

# CENTERS AND INSTITUTES

## A SAMPLING

---



# CENTERS AND INSTITUTES

## VARYING SCALE

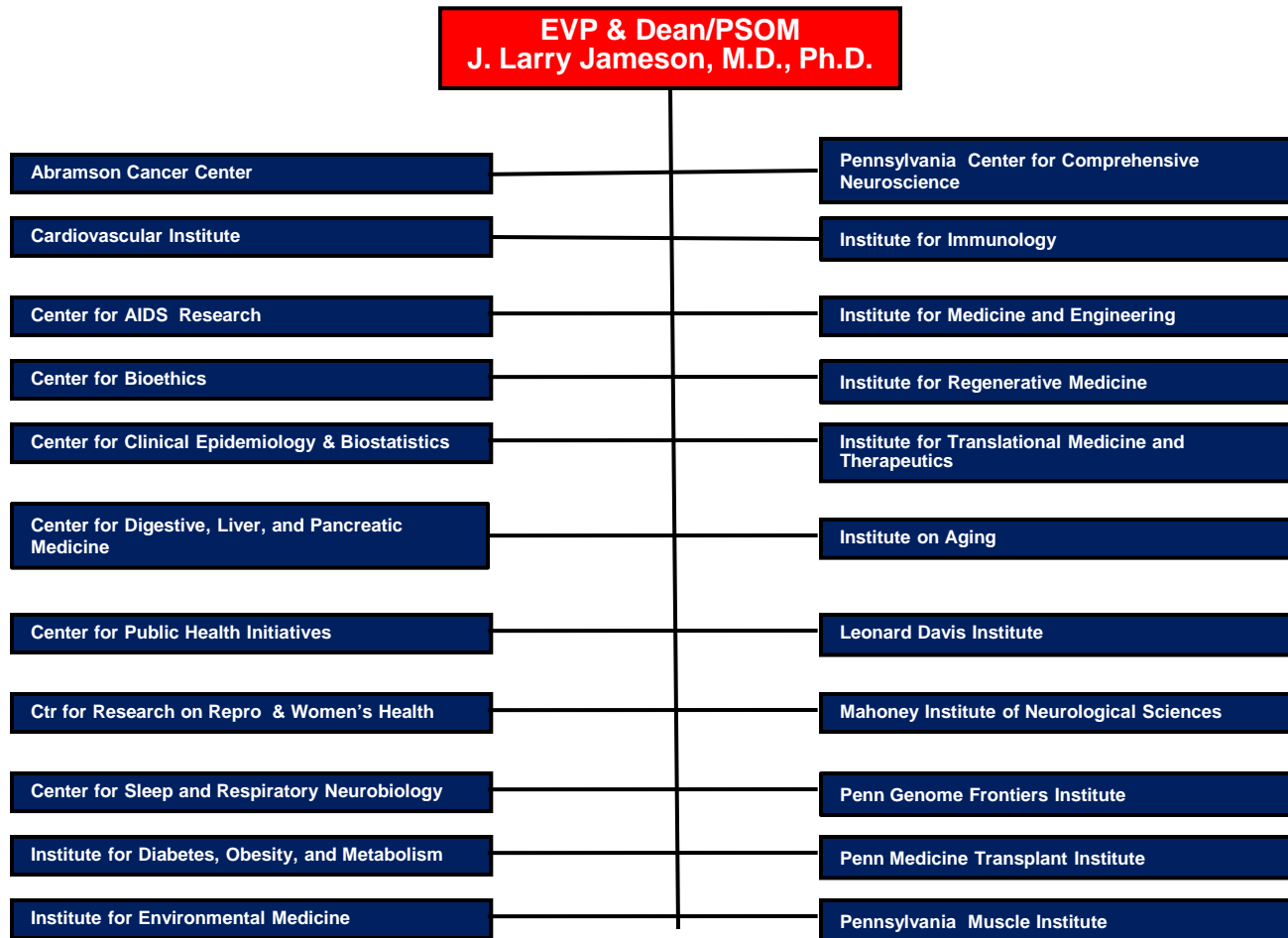
---

- **3 Center types:**
  - **Type 1: Departmental**
    - Led by faculty within one department
    - Focused on a singular field
  - **Type 2: Multi-Department Collaborations**
    - Governance and guidelines established by the school(s)
    - Interdisciplinary
  - **Type 3: University-wide**
    - Governance and guidelines established by the University
    - Interdisciplinary engaging multiple school and department faculty
    - Identified strategic priority for the University

# PERELMAN SCHOOL OF MEDICINE

## CENTERS & INSTITUTES

---



# CENTERS AND INSTITUTES

---

## Center for Public Health Initiatives (CPHI):

- Promotes interdisciplinary research, education and practice in public health
- 120 members from 8 schools and 10 external partners



## Institute for Regenerative Medicine (IRM):

- Promotes basic discoveries in stem cell biology and regeneration and translates the discoveries into new therapies
- 83 members from 4 schools



## Center for Neuroscience and Society (CNS):

- Promotes understanding of the impact of neuroscience on society through research and teaching, and to encourage the responsible use of neuroscience for the benefit of humanity.
- 19 members from 4 schools



# CENTERS AND INSTITUTES

## INSTITUTE ON AGING

---

- **Created to improve the health of older adults by increasing the quality and quantity of clinical and basic science research in aging as well as educational programs that focus on normal aging and age related disease**
- **Highly integrated with 81 members including faculty from 5 schools and over 9 external partners**
- **One of the top recipients of National Institute of Aging grants**
- **Successful pilot award program that seeds new extramural funds**
- **Has been critical to the hire of new and established interdisciplinary faculty across multiple departments**

# CENTERS AND INSTITUTES

---

- **Centers and Institutes provide members with a number of important benefits, some of which can include:**
  - **Participation in large collaborative grants**
  - **Diversification of sponsored funding support**
  - **Commercialization partnership opportunities**
- **Building campus-wide differentiated centers and institutes, one of Penn's distinguishing features, requires identifying new areas of promising research and leveraging resources to capitalize on these opportunities**
  - **Buy-in from University and School administrators, departmental chairs, and faculty leadership is necessary to the success of these important endeavors**