

Penn
UNIVERSITY of PENNSYLVANIA

Asbestos in Ambler Air?

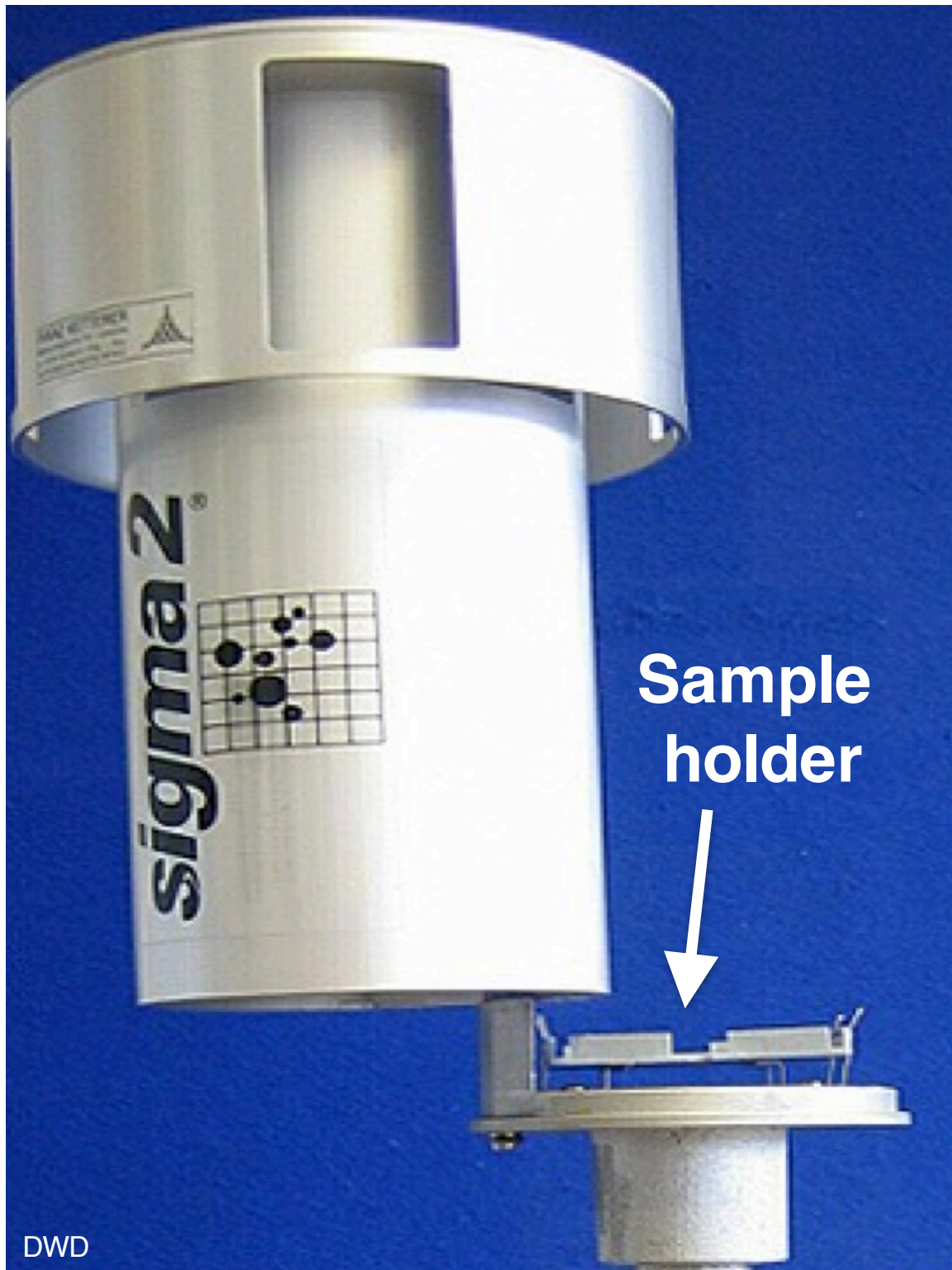
Reto Gieré

Department of Earth and
Environmental Science



Sigma-2 Passive Sampler

German sampler,
accredited by DIN for
ambient air
monitoring
(does not require
power)



Typical exposure
time: 1 week

Sampler shown in
“open” position, i.e.
when sample holder
is exchanged

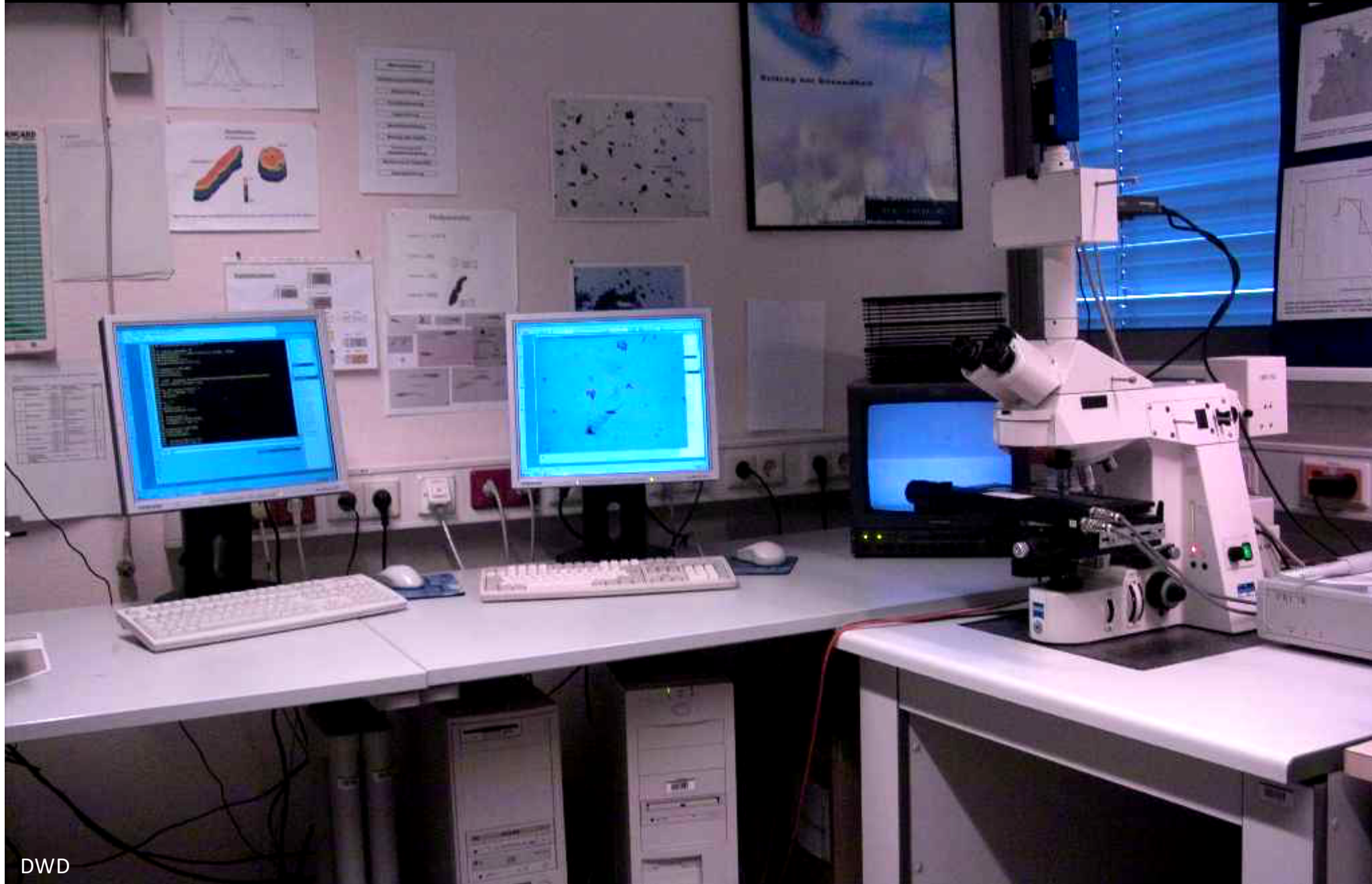
Sample holder



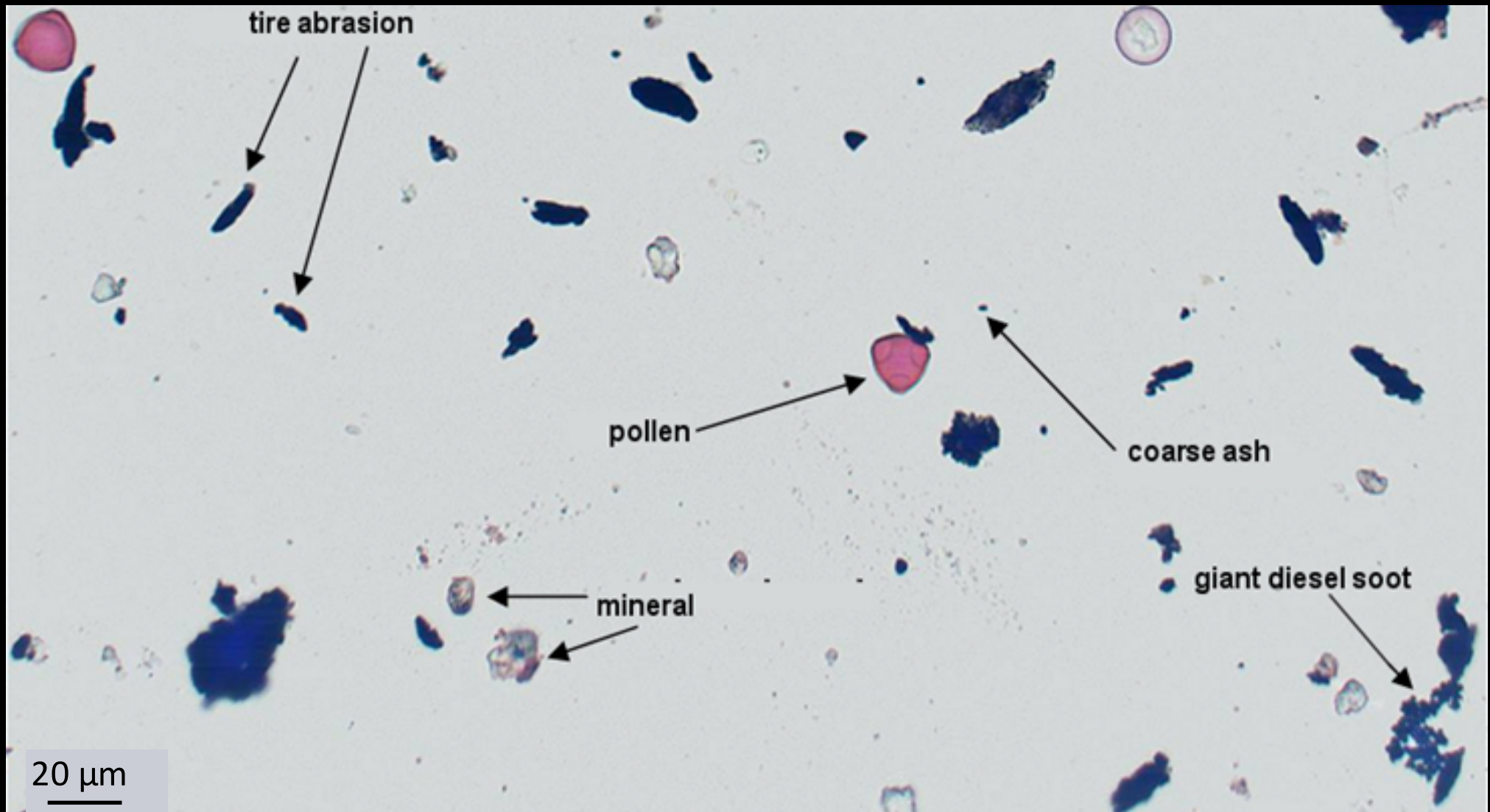
Sticky foil

→ traps all airborne materials

Samples studied by optical microscopy



Typical sample from a village



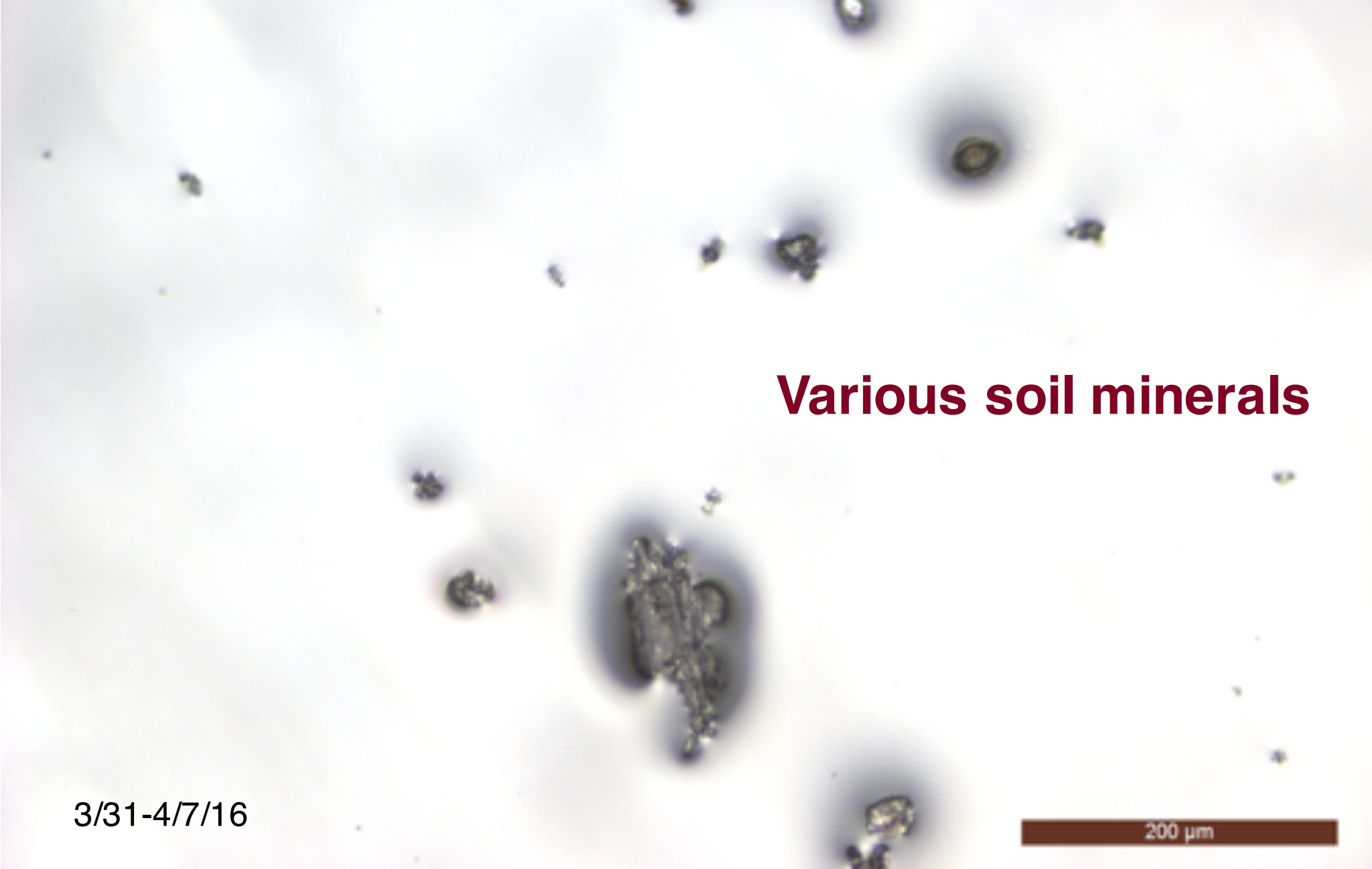
→ particles can be distinguished based on their optical properties

Example of BoRit Air

Various soil minerals

3/31-4/7/16

200 μm

A microscopic image showing various soil minerals. The minerals appear as small, dark, irregularly shaped particles of varying sizes and colors (some grey, some brownish) against a light background. A scale bar in the bottom right corner indicates 200 micrometers.

Example of BoRit Air

**Soil minerals and
plant fiber (?)**

3/31-4/7/16

200 μm



Example of BoRit Air

Probably a plant fiber, NOT asbestos!

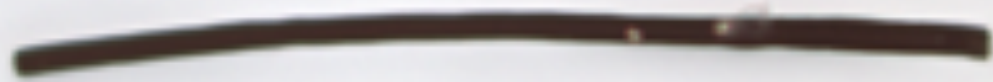


3/31-4/7/16

100 μ m

Example of BoRit Air

Plant fiber (?), NOT asbestos!



**Tire abrasion
particle**



4/7-4/14/16

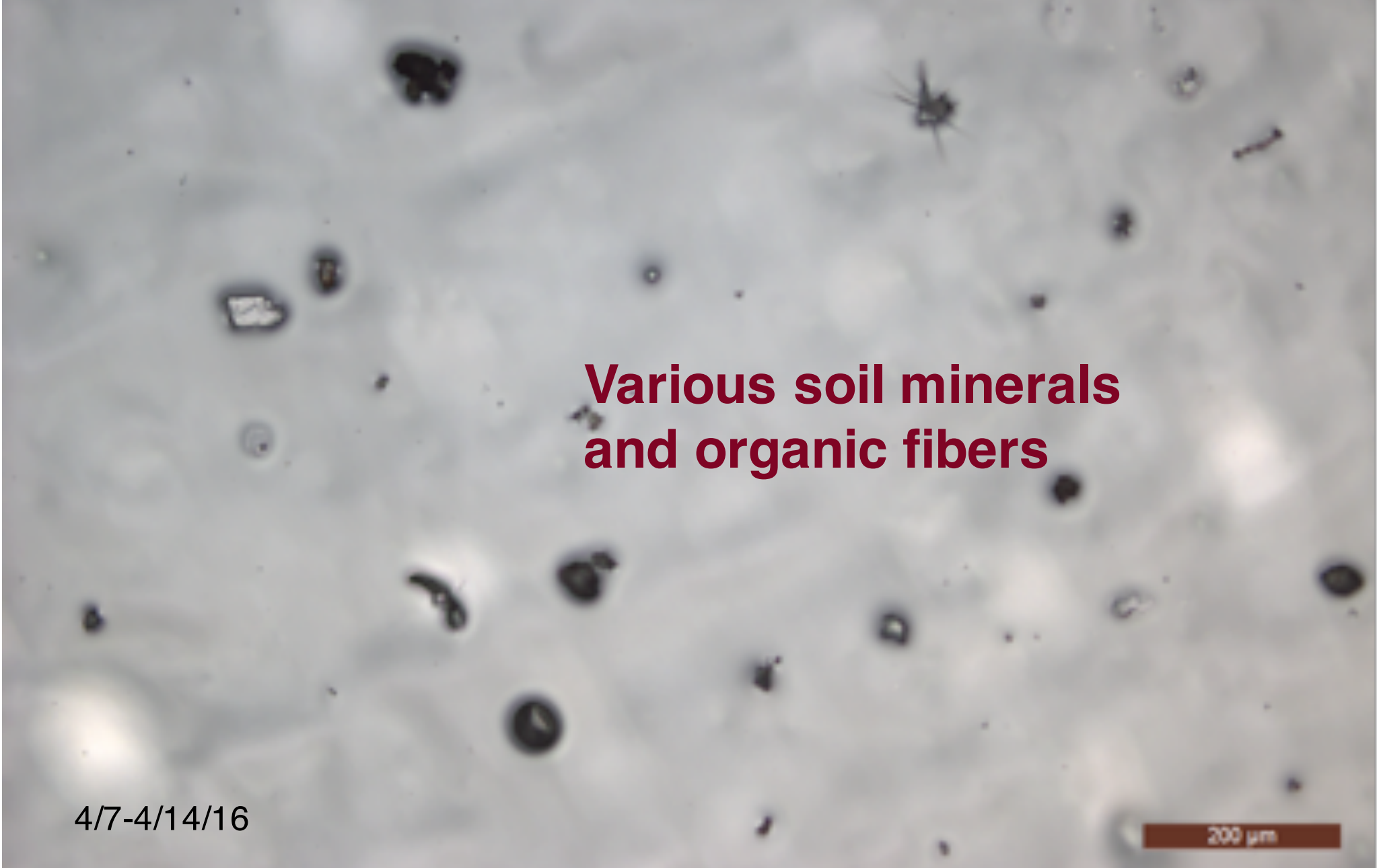
100 μm

Example of BoRit Air

**Various soil minerals
and organic fibers**

4/7-4/14/16

200 μm



Example of BoRit Air



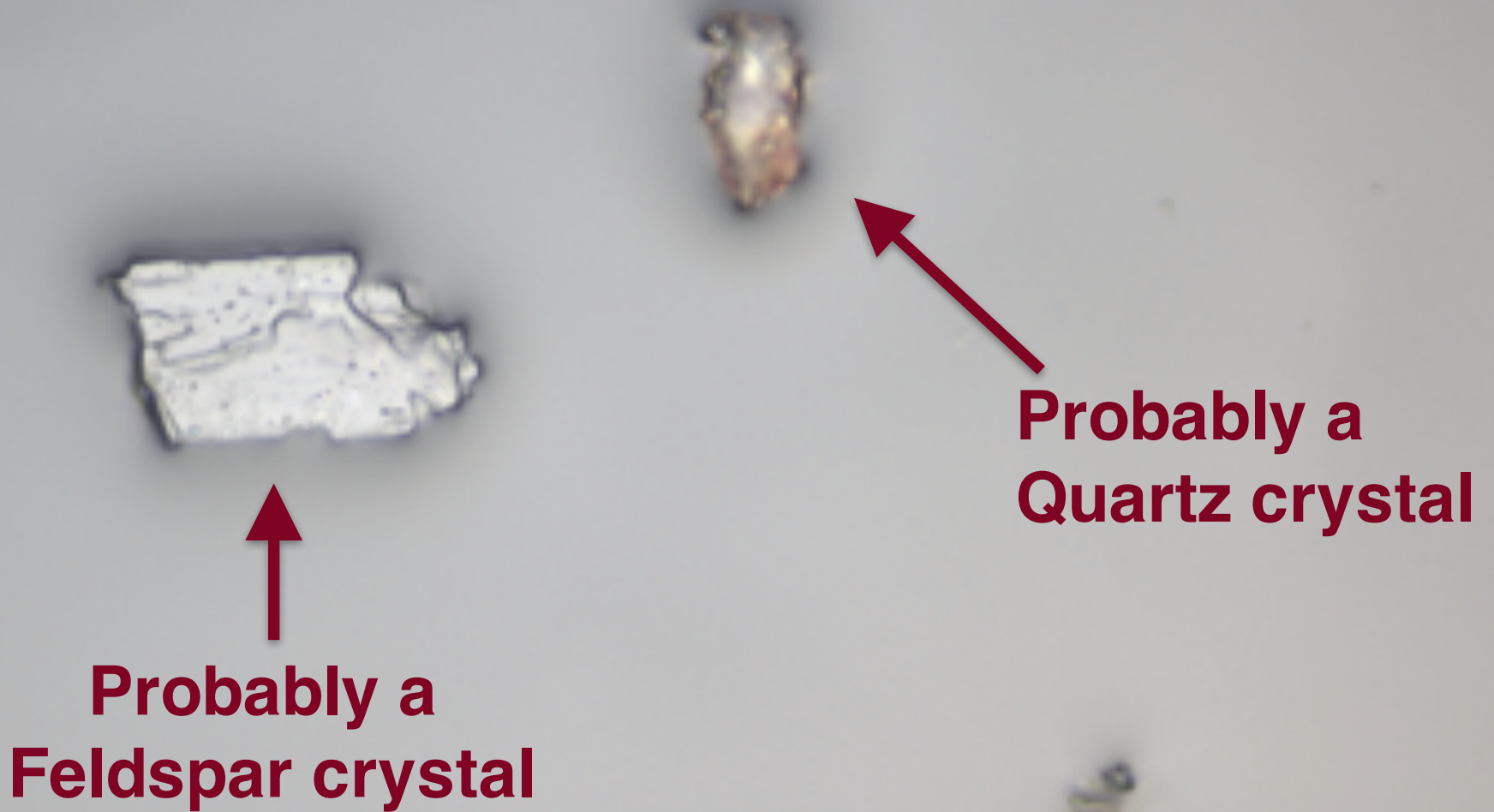
Next picture

**Various soil minerals
and organic fibers**

4/7-4/14/16

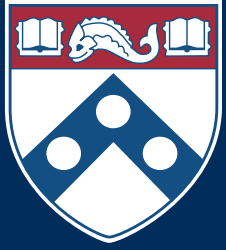
200 μ m

Example of BoRit Air



**Probably a
Feldspar crystal**

**Probably a
Quartz crystal**



Penn
UNIVERSITY of PENNSYLVANIA

Preliminary results (5 weeks of sampling)

- no asbestos detected**
- lots of soil minerals**
- tire abrasion particles**
- plant fibers**
- dog hair (?)**