



Perelman
School of Medicine
UNIVERSITY of PENNSYLVANIA

Department of Radiology

Radiology Research Meeting 2/15/18

Research Meeting 1/18/18: Agenda

- Announcements and Updates – Dave Mankoff
- Finance and Administration Update – Bill D’Arcy
- Grant components update – Bev Collins
- Topical Presentation: - Bob Mach – Research Update: PET Radiochemistry Program



Perelman
School of Medicine
UNIVERSITY of PENNSYLVANIA

Department of Radiology

New and Announcements

David Mankoff

Research Division Meeting Schedule

2017-2018

- 7/13/17 No meeting – Happy Summer!
- 8/17/17 Topical Presentation: Tessa Cook (Informatics)
- 9/21/17 **Research Executive Committee**
- 10/5/17* Topical Presentation: Ravi Reddy (Quant Imaging)
- 11/16/17 Topical Presentation: Tim Roberts (CHOP)
- 12/14/17* **Research Executive Committee (1:00-2:00)***
- 1/18/18** Topical Presentation: Jim Delikatny (Mol Imaging) (1-2PM)
- 2/15/18 Topical Presentation: Bob Mach (Mol Imaging)
- 3/14/18* **Research Executive Committee**
- 4/12/18* Topical Presentation: Mike Soulen (Clinical Res) (1 – 2PM)**
- 5/17/18 TBD
- 6/14/18* **Research Executive**

*Note date change

**Note Time change

Research Division Grand Rounds Speakers 2017-2018

- 9/12/17 Brandon Fornwalt
- 10/10/17 Zhi-Pei Liang
- 10/17/17 Claudine Gauthier
- 11/14/17 RSNA Resident Presentations
- 12/12/17 Mark Sellmyer
- 3/6/18 TBD
- 3/20/18 TBD
- 5/22/18 Hugo Aerts

(note 2/20/18 change)

- Also:

– Pendergrass Symposium Friday, 6/22/18

New ARR NIF Funding Rankings!



NIH Awards to Medical School Departments Diagnostic Radiology in Fiscal Year 2017

The total amount of NIH dollars going to Contact PIs having primary appointments in Diagnostic Radiology Departments has increased 17.40% in FY 2017 as compared to FY 2016 (\$500,850,376 vs \$426,629,827). The Academy would like to thank Stanley Baum, M.D., for his annual efforts to compile the appropriate data and provide us with such valuable information.

No.	Institute	Award Amount
1	Massachusetts General Hospital	\$ 66,861,100
2	Univ Of Pennsylvania Sch Of Medicine	\$ 56,631,193
3	Stanford University Sch Of Medicine	\$ 43,572,313
4	Univ Of California San Fran Sch Of Med	\$ 40,192,681
5	Washington University Sch Of Medicine	\$ 23,013,204
6	Johns Hopkins University Sch Of Medicine	\$ 18,664,452
7	Memorial Sloan Kettering Cancer Center	\$ 18,585,884
8	Mayo Clinic	\$ 16,548,103
9	Yale University Sch Of Medicine	\$ 15,073,576
10	Brigham and Women's Hospital	\$ 14,143,002
11	University Of Michigan Medical School	\$ 12,801,727
12	University Of Minnesota Medical School	\$ 12,671,674
13	New York University Sch Of Medicine	\$ 11,922,552
14	University Of Washington Sch Of Medicine	\$ 11,818,851
15	Univ Of California San Diego Sch Of Med	\$ 9,508,268
16	Univ Of Pittsburgh Sch Of Medicine	\$ 8,886,406
17	Columbia U Col Of Physicians & Surgeons	\$ 8,204,919



Local and Other News

- Successful TBIC/ITMAT submission and review
 - 10/45 proposal funded
 - Thank to all reviewers who helped!
- Pendergrass Symposium abstract submission will open soon
- Radiology Presentation at Dean's meeting of Chairs and Center Directors (SDSC) – Bob Mach on Radiochemistry
- S10 PAR's are out again – May deadline, Mar internal letter of intent

Graduate Student Representation

- Penn graduate students considering representation by American Federation of Teachers (AFT).
 - Largely led by non-science graduate students
 - Vote planned in the next 1-3 months
- Information about the process and proposed representation is in mail from Beth Winklestein (Vice-Provost for Education) on 2/12/18



Perelman
School of Medicine
UNIVERSITY of PENNSYLVANIA

Department of Radiology

Administration/Finance Update

Bill D'Arcy

Radiology Financial Update

- **Awards Received thru Jan. 2018**

- Received ~ \$17.13 million – 21.9% increase from FY 17.

Extramural funding expenditures thru Jan. 2018

- Extramural funding expenditures at \$18.75 million.

- Exceeding last fiscal year's record pace by 6% (\$1,072,797).

Proposals submitted thru Jan. 2018

- Above last year's pace by 20%.

Radiology Awards

- **Radiology Awards Officially Received This Period:**
 - David Cormode/ Polyarum Sub (R41)
 - Paul Yushkevich/ Northern California Institute for Research and Education Sub

Administrative Updates

- HIPAA certification
 - Mandatory certification.
 - Time period is now ANNUAL.
 - Can be found in knowledge link.
- February 5 Submissions
 - 10 - R01 Submissions - Thank You!!
- Dean's Budget FY 19
 - Will be reaching out for any new awards to be received.
 - Thank you so far for the quick responses and cooperation.
- Effort Reporting
 - Scheduled to start February 2018.
 - Delays Currently in the Software Program

Administrative Updates

– Penn Profile/Online Directory

- Please double check that correct phone number and address are listed.
- This update drives many of Penn's online profiles in Penn ERA, CAMS, etc.

– Report Updates

- Should be receiving January updates this month



Perelman
School of Medicine
UNIVERSITY of PENNSYLVANIA

Department of Radiology

Grant Components Update

Bev Collins



Perelman
School of Medicine
UNIVERSITY of PENNSYLVANIA

Department of Radiology

How to Comply with NIH's Public-Access Policy: Publications and Data

NIH Public-Access Policy:

Make publications freely available

- *All investigators funded by the NIH must submit to the National Library of Medicine's PubMed Central an electronic version of their final, peer-reviewed manuscripts upon acceptance for publication, to be made publicly available no later than 12 months after the official date of publication*

NIH Public-Access Policy

- Need PubMedCentral ID (PMCID) within 3 months
- Most journals will submit your manuscript for you. Some will wait 12 months.

- *It can be archived in PMC, with a PMCID#, until it is made available to the public at the 12-month mark.*



NIH Public-Access Policy

1. Make sure all publications resulting from NIH funding are deposited into PubMed Central
2. Make sure the publications are associated with your funding ID
3. Make sure you list these in MyBibliography

MyBibliography in MyNCBI

- <https://www.ncbi.nlm.nih.gov/myncbi>
 - Good place to manage all your publications
 - Links to your NIH Commons account
 - Use for NIH progress reporting
 - Put the link into your biosketch as “Complete list of My Publications”

PubMed

spejewski



Search

[Create RSS](#) [Create alert](#) [Advanced](#)Format: Summary  Sort by: Most Recent  [Filters: Manage Filters](#)

Search results

Items: 5 Selected: 1

- [An objective analysis of process errors in trauma resuscitations.](#)
 1. Clarke JR, **Spejewski** B, Gertner AS, Webber BL, Hayward CZ, Santora TA, Wagner DK, Baker CC, Champion HR, Fabian TC, Lewis FR Jr, Moore EE, Weigelt JA, Eastman AB, Blank-Reid C. Acad Emerg Med. 2000 Nov;7(11):1303-10. PMID: 11073483 [Free Article](#)
[Similar articles](#)

- [Nuclear structure of light thallium isotopes as deduced from laser spectroscopy on a fast atom beam.](#)
 2. Bounds JA, Bingham CR, Carter HK, Leander GA, Mlekodaj RL, **Spejewski** EH, Fairbank WM Jr. Phys Rev C Nucl Phys. 1987 Dec;36(6):2560-2568. No abstract available. PMID: 9954381
[Similar articles](#)

- [Role of deformation in the intrusion of the h9/2 levels below the Z=82 proton shell.](#)
 3. Bounds JA, Bingham CR, Juncar P, Carter HK, Leander GA, Mlekodaj RL, **Spejewski** EH, Fairbank WM Jr. Phys Rev Lett. 1985 Nov 18;55(21):2269-2272. No abstract available. PMID: 10032097
[Similar articles](#)



Find related data

Database:

Search details

spejewski[All Fields]

Recent Activity

 spejewski (5) Long-term outcomes after resection of diffuse low-g harrison bai (66)

PubMed Search

Create RSS Create alert Advanced

Format: Summary Sort by: Most Recent

Send to Filters: Manage Filters

Search results

Items: 5

[An objective analysis of process errors in trauma resuscitations.](#)

1. Clarke JR, **Spejewski** B, Gertner AS, Webber BL, Hayward CZ, Santoro
Champion HR, Fabian TC, Lewis FR Jr, Moore EE, Weigelt JA, Eastman
Acad Emerg Med. 2000 Nov;7(11):1303-10.
PMID: 11073483 [Free Article](#)
[Similar articles](#)

[Nuclear structure of light thallium isotopes as deduced from laser spectroscopy on a fast atom](#)

2. [beam.](#)
Bounds JA, Bingham CR, Carter HK, Leander GA, Mlekodaj RL, **Spejewski** EH, Fairbank WM Jr.
Phys Rev C Nucl Phys. 1987 Dec;36(6):2560-2568. No abstract available.
PMID: 9954381
[Similar articles](#)

[Role of deformation in the intrusion of the h9/2 levels below the Z=82 proton shell.](#)

3. Bounds JA, Bingham CR, Juncar P, Carter HK, Leander GA, Mlekodaj RL, **Spejewski** EH, Fairbank
WM Jr.
Phys Rev Lett. 1985 Nov 18;55(21):2269-2272. No abstract available.
PMID: 10032097
[Similar articles](#)

Choose Destination

- File
- Collections
- Order
- Citation manager
- Clipboard
- E-mail
- My Bibliography

spejewski[All Fields]

- Recent Activity**
- spejewski (5)
 - Use of Radiology Procedure Code Care: The Need for Standardization
 - collins b langlotz (1)

My NCBI

[Customize this page](#) | [NCBI Site Preferences](#) | [Video Overview](#) | [Help](#)

Search NCBI databases

Search :

Hint: clicking the "Search" button without any terms listed in the search box will transport you to that database's homepage.

My Bibliography

Your bibliography contains **1 items**.

Share your bibliography with this URL:
<https://www.ncbi.nlm.nih.gov/sites/myncbi/beverly.collins.1/bibliography/48071605/public?sort=date&direction=ascending>

Most recent citations:

Clarke JR, Spejewski B, Gertner AS, Webber BL, Hayward CZ, Santora TA, Wagner DK, Baker CC, Champion HR, Fabian TC, et al. [An objective analysis of process errors in trauma resuscitations](#). Acad Emerg Med. 2000 Nov;7(11):1303-10. PubMed PMID: 11073483.

[Manage My Bibliography »](#)

Recent Activity

Saved Searches

You don't have any saved searches yet.

Go and [create some saved searches](#) in PubMed or our other databases.

[Manage Saved Searches »](#)

Collections

Collection Name	Items	Settings/Sharing	Type
Favorites	edit 0	Private	Standard
My Bibliography	edit 1	Public	Standard
Other Citations	edit 0	Private	Standard

[Manage Collections »](#)

Filters

Filters for:

You do not have any active filters for this database.

[Add filters for the selected database.](#)

[Manage Filters »](#)



This bibliography is public ([make it private](#)) | [Edit settings](#) for My Bibliography | Save My Bibliography to a [text file \(MEDLINE\)](#)

[Display Settings:](#) Award view, Sort by public access compliance, group by citation type

Select: [All](#), [None](#) 0 items selected

[Move](#)

[Delete](#)

[Copy](#)

[View](#)

[Suggest](#)

[Assign Awards](#)

[PDF report](#)

Journal Articles

- 1: Wang KC, Patel JB, Vyas B, Toland M, Collins B, Vreeman DJ, Abhyankar S, Siegel EL, Rubin DL, Langlotz CP. [Use of Radiology Procedure Codes in Health Care: The Need for Standardization and Structure](#). *Radiographics*. 2017 Jul-Aug;37(4):1099-1110. 10.1148/rg.2017160188. Review. PubMed PMID: 28696857; PubMed Central PMCID: PMC5548452.

NIH Public Access Compliance: Complete. PMCID: [PMC5548452](#)

Funding: No funding has been associated with this citation. [Add award](#)

- 2: Clarke JR, Spejewski B, Gertner AS, Webber BL, Hayward CZ, Santora TA, Wagner DK, Baker CC, Champion HR, Fabian TC, Lewis FR Jr, Moore EE, Weigelt JA, Eastman AB, Blank-Reid C. [An objective analysis of process errors in trauma resuscitation](#). *Acad Emerg Med*. 2000 Nov;7(11):1303-10. PubMed PMID: 11073483.

NIH Public Access Compliance: Not applicable [\[Edit Status\]](#)

Funding: No funding has been associated with this citation. [Add award](#)

NIH Public-Access Policy: Data Safety and Availability

- Data Management Plan (DMP)
- Data Sharing Plan
- Data Safety and Monitoring Plan (clinical trials)

What is a DMP?

- 2-page document
- Describes:
 - What data will be produced
 - How the data will be managed during the project
 - How the data will be handled after the project
 - How the data will be shared

DMP FYI

- DMP expectations are tightening over time
- Poor data management plans can make the difference in getting funding!

dmptool.org

DMPTool Welcome! Kristin Brinoy

[Home](#) [My Dashboard](#) [DMP Requirements](#) [Public DMPs](#) [News](#) [Help](#) [Contact Us](#) [About](#) [Log Out](#)

Data Management Planning Tool

Create, review, and share data management plans that meet institutional and funder requirements.

[Get Started](#)

PUBLIC DMPS	DMPTOOL NEWS	DMPTOOL HELP
<p>List of sample data management plans provided by DMPTool users.</p> <ul style="list-style-type: none">• UNDERSTANDING THE ROLE OF PHYSICIAN INTEGRATION WITHIN NURSING HOMES IN POST-ACUTE CARE OUTCOMES• "A Microgravity-Themed Collaborative Intervention Promoting Student Selection of a STEM Career Pathway"• A Political Ecology of Value: A Cohort-Based Ethnography of the Environmental Turn in Nicaraguan Urban Social Policy <p>View All</p>	<p>Latest information about data management and the DMPTool.</p> <ul style="list-style-type: none">• First annual funder template pizza party!• Roll up, roll up. Get yer DMP updates here!• NSF EAGER Grant for Actionable DMPs• DMPRoadmap summer camp news• On the right track(s) – DCC release dra... <p>More News</p>	<p>Overview of how to use the tool, plus resources and guidance on data management.</p> <ul style="list-style-type: none">• Frequently Asked Questions• Create a DMP• Administer the DMPTool• Data management guidance• Community resources <p>View All</p>

DMPTool is a service of the University of California Curator Center of the California Digital Library. Copyright © 2010-2017 The Regents of the University of California. [Accessibility Policy](#) | [Terms of Use](#) | [Contact Us](#) | [About](#)



Data/Resource Sharing

- All grants seeking “\$500K or more in direct costs in any one year” should explain how the final research data will be shared, or justifying why it cannot be shared,
- Applications that involve developing model organisms are to include plans for sharing and distributing these resources, and
- Studies involving large-scale human and non-human genomic data must adhere to the NIH Genomic Data Sharing Policy.

Sharing Venues

- By request
- On researcher's personal website
- In the institutional repository
- In a data repository

Preferred

http://guides.library.upenn.edu/data-management

Data Planning and Management

The library will help you understand your research materials, plan for projects, and save and archive

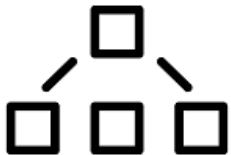
Ask a data question

You can also search [Research DataQ](#) for answers



Build a Data Management Plan

[Learn about the DMP Tool and other Data Management Plan basics](#)



Manage Personal Research Materials

Take a look at this guide from [Purdue University](#) about Personal Information Management (PIM)



Store and Back up Data and Files

Find out about some storage and backup options for your digital files



Resou

[\\$ Funding Agency Plans](#) (CENDI.gov)

[Funding Agency Plans](#) (SPARQ)

[Links to Doma](#)

- Search the [Regi](#) [Repositories](#) (Re
- Read the [Wellco](#) [Suggestions](#)
- [NIH Sharing Rep](#)
- [ICPSR](#)
- [Dryad](#)

[Links to Scho](#) [data managemen](#)

Library Info Facilities Research Collections Co

Search Library guides GO Catalog & Articles+

Penn Libraries / Guides / Data Management Plans / Data Repositories

Data Management Plans: Data Repositories

This guide provide information and resources to assist researchers in data management planning process.

Launch DMPTool Funding Agency Requirements **Data Repositories** Penn Resources

Directories of Data Repositories

Looking for a repository where you can store your research data? The following directories may be helpful.

- [Databib.org](#)
- [Re3Data.org \(Registry of Research Data Repositories\)](#)
- [NIH Data Sharing Repositories](#)
- [OpenDOAR](#)

Primary Data Repositories

The following data repositories are frequently used by members of the Penn community for storing research data. Some are general repositories and repository services; others store specific types of data. If you have a suggestion for another repository to add to this list, please contact us!

- [Figshare - cloud-based repository for all types of data](#)
- [Dryad Digital Repository - non-profit STM repository](#)

Penn-Based Data Repositories

SCHOLARLYCOMMONS

[ScholarlyCommons](#) is the institutional repository output of the Penn community and shares these [ScholarlyCommons Guide](#) or email repository@pennlib.org

The following boilerplate text can be used to describe your data management plan:

Data management for this project will be supported by the University of Pennsylvania. ScholarlyCommons will host, share, and disseminate the scholarly output of this project in accordance with the multi-tiered disaster recovery plan for all of its content to ensure the discoverability of content, and ongoing support for the project. Consult with the Penn Libraries to facilitate the implementation of appropriate descriptive metadata standards and ensure that all datasets will be published in ScholarlyCommons and revised as needed.

NIH Rigor and Reproducibility requirement

- <https://grants.nih.gov/reproducibility/documents/grant-guideline.pdf>

WHAT ARE THE UPDATES?

1 UPDATES TO RESEARCH STRATEGY GUIDANCE

The research strategy is where you discuss the significance, innovation, and approach of your research plan. Let's look at an R01, for example:



Introduction to resubmission and revision applications



Specific aims



Research strategy



Commercialization plan



Biographical sketch

The new **research strategy** guidelines require that you:

- State the strengths and weakness of published research or preliminary data crucial to the support of your application
- Describe how your experimental design and methods will achieve robust and unbiased results
- Explain how biological variables, such as sex, are factored into research design and provide justification if only one sex is used


2 NEW ATTACHMENT FOR AUTHENTICATION OF KEY BIOLOGICAL AND/OR CHEMICAL RESOURCES

From now on, you must briefly describe methods to ensure the identity and validity of key biological and/or chemical resources used in the proposed studies.

These include, but are not limited to:



Standard laboratory reagents that are not expected to vary do not need to be included in the plan. Examples are buffers and other common biologicals or chemicals.

 **DO NOT** put experimental methods or preliminary data in this section

3 NEW REVIEWER GUIDELINES

Here are the additional criteria the reviewers will be asked to use:

- ➔ Is there a **strong scientific premise** for the project?
- ➔ Have the investigators presented adequate plans to address **relevant biological variables**, such as sex, for studies in vertebrate animals or human subjects?
- ➔ Have the investigators presented strategies to ensure a **robust and unbiased approach**, as appropriate for the work proposed?

~~Use of preliminary data in this section~~



DO focus on authentication and validation of key resources



Reviewers will also be asked to comment on that new attachment (see Update 2)!

New age policy

- For application due dates on or after **January 25, 2019** (one year from now), you must have a plan describing **how participants across the lifespan will be included** and justify the proposed age range of participants.
- **Reviewers will consider whether the proposed age range is appropriate** in the context of the specific scientific aims. Should the study be funded, keep in mind that your **progress reports will include** de-identified individual-level participant **data on** sex/gender, race, ethnicity, and **age** at enrollment (in units ranging from hours to years).

Vertebrate Animals Section changes

- A description of veterinary care is no longer required.
- Justification for the number of animals has been eliminated.
- A description of the method of euthanasia is required only if the method is not consistent with AVMA guidelines.

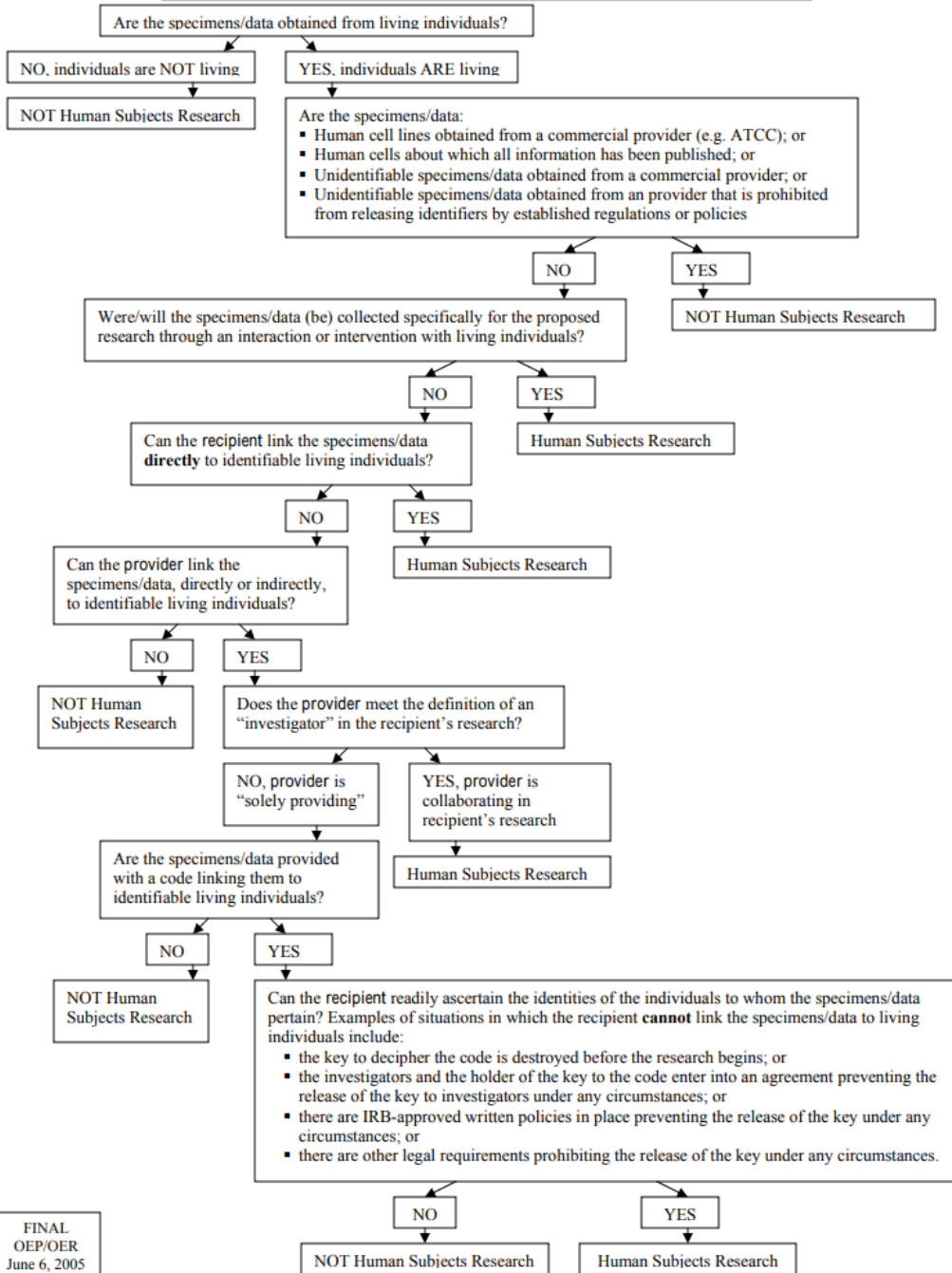
NIH checklist for animal research

- **1. Description of Procedures (Vertebrate Animals Section)**
- Describe the animals and their proposed use. Address the following for all species to be used:
 - Species
 - Strains
 - Ages
 - Sex
 - Total number of animals by species to be used
 - Concise description of proposed procedures on live animals (i.e., sufficient information for evaluation)
 - Source, only if dogs or cats are proposed
- **2. Justifications (Vertebrate Animals Section)**
- Provide justifications for:
 - Choice of species
 - Why research goals cannot be accomplished using an alternative model (e.g., computational, human, invertebrate, in vitro)
- **3. Minimization of Pain and Distress (Vertebrate Animals Section)**

Human subjects

- Is it human subjects research?
- <https://grants.nih.gov/grants/policy/hs/PrivateInfoOrBioSpecimensDecisionchart.pdf>

Research Involving Private Information or Biological Specimens



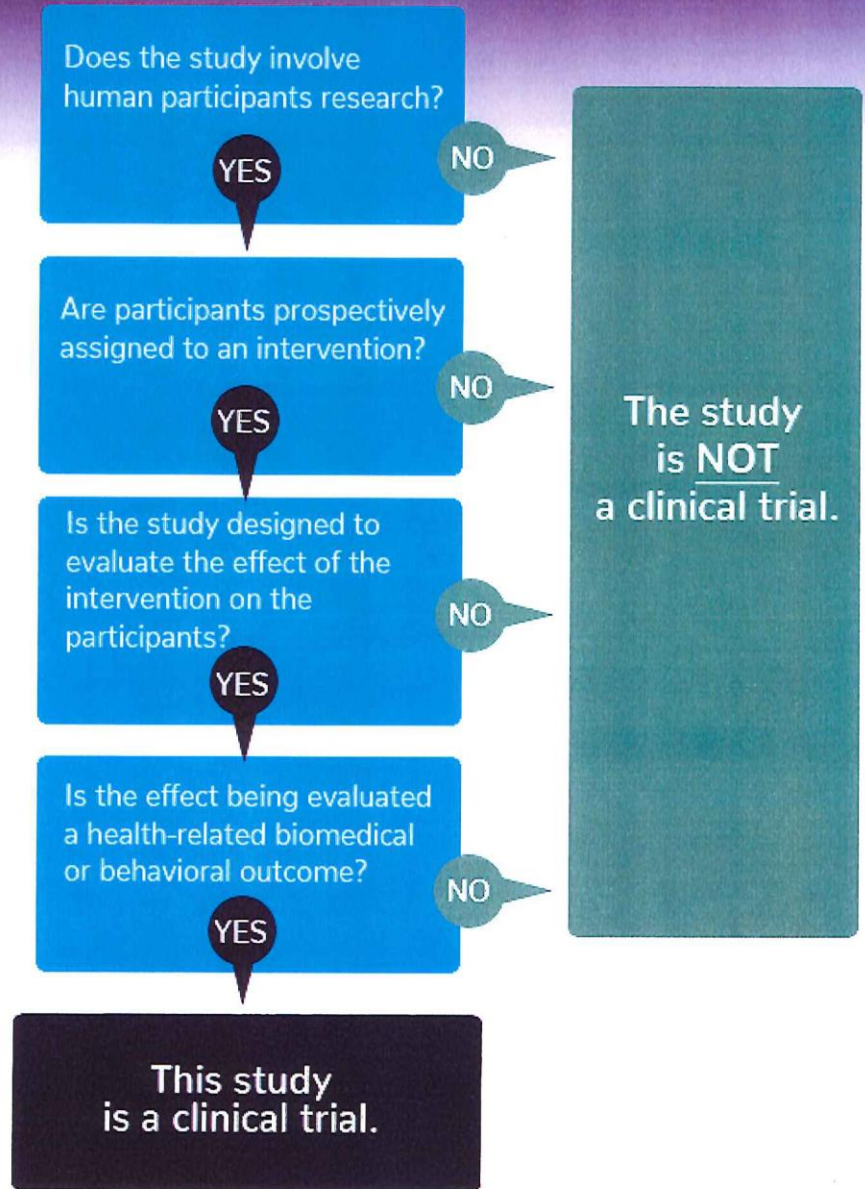
Completing the PHS HS/CT Information Form – Exempt HS Research

	Section 1 Basic Information	Section 2 Study Population Characteristics	Section 3 Protection and Monitoring Plan	Section 4 Protocol Synopsis (Clinical Trials only)	Section 5 Other Clinical Trial Related Attachments (Clinical Trials only)
Exemption 1	Complete	Complete	Complete	Complete, if clinical trial	Complete, if clinical trial
Exemption 2	Complete	Complete	Complete	Complete, if clinical trial	Complete, if clinical trial
Exemption 3	Complete	Complete	Complete	Complete, if clinical trial	Complete, if clinical trial
Exemption 4	Complete	No	Complete	No	No
Exemption 5	Complete	Complete	Complete	Complete, if clinical trial	Complete, if clinical trial
Exemption 6	Complete	Complete	Complete	Complete, if clinical trial	Complete, if clinical trial



Clinical Trials

Decision Tree for NIH Clinical Trial Definition



Protocol support

- **Erin Schubert** erin.schubert@uphs.upenn.edu
- can help with developing protocols and data protection plans in all areas

- As always, and even more so now, get your grants in early!

Topical Presentation
Research Update:
PET Radiochemistry Program

Bob Mach, Ph.D.