

Metamorph software cheat sheet (iSIM)

Remember to also switch objectives in the software when you change them manually

Z position

Light to eyes on/off

To view through eyepieces, first select illumination, then toggle shutter

Acquisition window

Select experiment options (will open as tabs to the left)

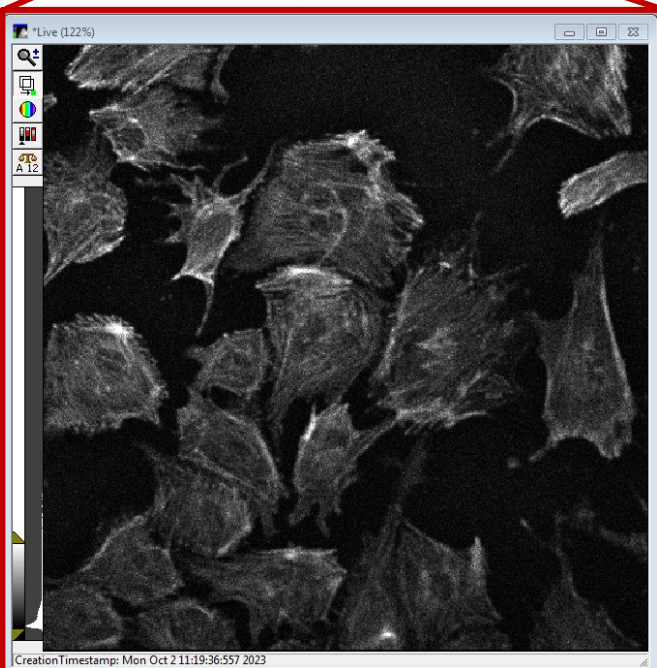
Laser intensity can only be adjusted while live preview is active

Take still preview image

Start full acquisition

Close all windows except acquisition

Live preview



Brightness autoscales: check histogram on the left to see real distribution of pixel intensities. The number underneath the scale icon indicates range (from zero to 2^{12} in screenshot) and will also autoscale

To minimize photobleaching and damage to delicate samples, minimize time using live by taking a preview image.

If you saw fluorescence by eye but the preview shows only noise, check that the switch on the front of the scope is turned to the camera icon.