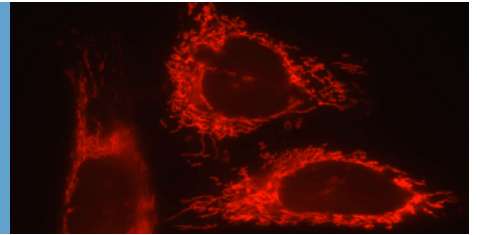


Hematology-Oncology/Abramson Family Cancer Research Institute Seminar Series

Fall 2010 Schedule



University of Pennsylvania, School of Medicine

Seminars are held on Tuesdays at 12:00 noon in CRB Austrian Auditorium unless otherwise noted

September 7

Douglas C. Wallace, Ph.D.

Center of Mitochondrial and Epigenetic Medicine, Children's Hospital of Philadelphia

A mitochondrial bioenergetic approach to cancer and related disorders

September 14

John Morgan Building Reunion Hall

Shelley L. Berger, Ph.D.

Department of Cell and Developmental Biology

Histone covalent modifications in epigenetic regulation

September 21

CANCELED FOR AFCRI SAB MEETING

September 28

Mick Bhatia, Ph.D.

McMaster Stem Cell and Cancer Research Institute

Characterization of normal and Leukemic hematopoietic tissue in the human

October 5

Adolfo A. Ferrando, M.D., Ph.D.

Institute for Cancer Genetics, Columbia University

Oncogenic transcriptional networks in T-ALL

October 12

J. Alan Diehl, Ph.D.

Department of Cancer Biology

Molecular analysis of Cyclin D1 accumulation and action in human cancer

October 19

Ali Shilatifard, Ph.D.

Stowers Institute for Medical Research

Lessons learned from yeast about human leukemia

October 26

Ellen Pure, Ph.D.

Wistar Institute, Departments of Medicine, Microbiology, and Pharmacology

Remodeling the tumor microenvironment: The role of the fibroblast protease FAB

November 2

Raymond J. MacDonald, Ph.D.

University of Texas Southwest Medical Center

Transcriptional control of pancreatic development

November 09

Grand Rounds: Medical Alumni Hall, 1 Maloney

Barry Coller

Rockefeller University

Personalized medicine: The antiplatelet therapy experiment

November 16

Boris Pasche, M.D., Ph.D.

The University of Alabama at Birmingham

TGF- β signaling and amplitude-modulated electromagnetic fields in cancer development and progression

November 23

Monica Bessler, Ph.D.

The Comprehensive Bone Marrow Failure Center at The Children's Hospital of Philadelphia

The role of telomere maintenance in bone marrow failure and cancer predisposition

November 30

Klaus Rajewsky, M.D.

Immune Disease Institute, Harvard Medical School

Modeling Epstein-Barr-Virus driven immune surveillance and B cell lymphomagenesis in the mouse

December 7

Sandra Ryeom, Ph.D.

Department of Cancer Biology

Thrombospondin-1 mediates oncogenic Ras-induced senescence in pre-malignant lung tumors downstream of p53

December 14

Frederick W. Alt, Ph.D.

Howard Hughes Medical Institute

Mechanisms of chromosomal translocations in Lymphomas and other cancers: Mapping the translocatome

Seminars will resume on January 4, 2011. The winter calendar will be available in late November.

For more information, please contact Laura Murillo (215-573-0908) kernsl@mail.med.upenn.edu,
or Regina McDermott (215-662-4859) Regina.McDermott@uphs.upenn.edu