



# GRAND ROUND SEMINAR SERIES 2011–2012



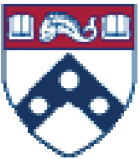
## January 2012

- 4 **Loren Laine, MD, AGAF**  
Professor of Medicine, Yale University  
*"An Update on Anti-Platelet Therapy"*
- 11 **Stephen E. Rubesin, MD**  
Professor of Radiology, UPENN  
*"Small Bowel Cases"*
- 18 **Misha Rosenbach, MD**  
Assistant Professor of Dermatology & Internal Med. UPENN  
*"Cutaneous Manifestations of GI Diseases"*
- 25 **Steven M. Kawut, MD, MS**  
Associate Professor of Med. & Epidemiology UPENN  
*"Pulmonary Vascular Complications of Liver Disease"*



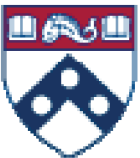
## February 2012

- 1 **George Makar, MD, MSCE**  
Assistant Professor of Medicine, UPENN  
*"Interdisciplinary Conference"*
- 8 **Richard I. Rothstein, MD**  
Interim Chair, Dept. of Med., Dartmouth Medical School  
*"Endoscopic Treatment of Obesity & Diabetes"*
- 15 **Antonia R. Sepulveda, MD, PhD**  
Professor of Pathology & Lab. Medicine, UPENN  
*"Title TBD"*
- 22 **Julian Abrams, MD, MS**  
Assistant Professor of Clinical Med. Columbia Univ.  
*"Novel Concepts in Barrett's Esophagus & Esophageal Adenocarcinoma"*
- 29 **John Pandolfino, MD**  
Associate Professor of Medicine, Northwestern  
*"Advances in Esophageal Physiologic Testing: Has it made a difference?"*



## March 2012

- 7 **Rotonya Carr, MD**  
Instructor of Medicine, UPENN  
*"Title TBD"*
- 14 **Tom Deas, MD**  
President Elect, ASGE, Gastroenterology Associates Of North Texas  
*"Health Information Technology- - In Pursuit of the Golden Fleece"*
- 21 **David Goldberg, MD, MSCE**  
Instructor of Medicine, UPENN  
*"Title TBD"*
- 28 **Drs. Ahmad, Hoops & Rashid**  
UPENN  
*"Endoscopy CQI"*



## April 2012

- 4 **Gary Falk, MD, MS**  
Professor of Medicine, UPENN  
*"Interdisciplinary Conference"*
- 11 **Raffensperger**
- 18 **John I. Allen, MD, MBA, AGAF**  
Adjunct Professor of Medicine, University of Minnesota  
*"Health Care Reform: Can Town and Gown become accountable?"*
- 25 **John DeValle, MD**  
Professor of Internal Medicine, University of Michigan  
*"Wilmott Professor Lectureship"*

## May 2012

- 2 **Caroline Kerner, MD, MSCE**  
Instructor of Medicine, UPENN  
*"Title TBD"*
- 9 **Shivan Mehta, MD, MBA**  
Gastroenterology Fellow, UPENN  
*"Update on Healthcare Reform and Impact Upon Gastroenterology"*
- 16 **DDW Rehearsal**
- 23 **DDW**
- 30 **Drs. Ahmad, Hoops & Rashid**  
UPENN  
*"Endoscopy CQI"*

## June 2012

- 6 **Komorov**
- 13 **Research Presentations**
- 20 **Research Presentations**
- 27 **Helen Shields, MD**  
Professor of Medicine, Harvard Med. School  
*"Title TBD"*

Target Audience: This program has been designed for all physicians & fellows within the Gastroenterology division across all entities (HUP, VA, PPMS, PMR). Faculty, fellows, residents, interns and other departments/divisions are also encouraged to attend.

Accreditation: The Perelman School of Medicine at the University of Pennsylvania is accredited by the Accreditation Council for Continuing Medical Education (ACME) to provide continuing medical education for physicians.

Designation of Credit: The Perelman School of Medicine at the University of Pennsylvania designates this education activity for a maximum of 1 AMA PRA category 1 credit. Physicians should only claim credit commensurate with the extent of their participation in the activity.

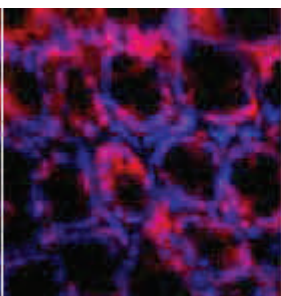
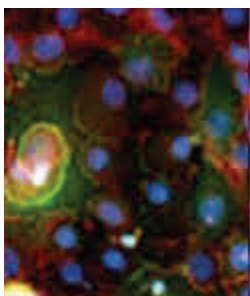
Acknowledgement of Commercial Support: NONE

Education Objectives:

- Provide up-to-date & clinically relevant material
- Review new advances in the field of gastroenterology
- Review ongoing research developments
- Give a forum to discuss complication of GI procedures and adverse outcomes
- Provide an interdisciplinary approach to GI surgical cases

Kalai Herko

CME Coordinator for GI Grand Rounds  
Tel: (215) 898-0850—Fax: (215) 573-2024  
Email: kherko@mail.med.upenn.edu  
Website: <http://www.med.upenn.edu.gastro>



Department of Medicine  
Division of Gastroenterology