



Spotlight - CRSN/IDOM Retreat



Left to right are:

Karen Teff, PhD,
Allan I. Pack, MB,ChB, PhD,
Sigrid Veasey, MD,
Mitchell A. Lazar, MD, PhD,
Morris J. Birnbaum, MD, PhD,
Amita Sehgal, PhD, and
Rexford S. Ahima, MD, PhD

The Center for Sleep and Respiratory Neurobiology and the Institute for Diabetes, Obesity and Metabolism's joint retreat (photo left) held on Nov. 20th was a resounding success. Attendees were excited about the opportunities available for scientific collaboration. A new funding opportunity for Pilot Studies on Sleepiness Disorders and Metabolism was announced.

[More...](#)

Announcements

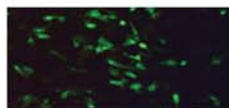


Susan J. Mandel, MD, MPH becomes the 12th Louis Duhring Outstanding Clinical Specialist Recipient

Deadline for submission of **Diabetes and Endocrinology Research Center (DERC) Pilot and Feasibility awards** is **December 15, 2008**. [More...](#)

Diabetes Research Centers: Medical Student Research Program
Students will spend 8-12 weeks working on their research project at a DERC or Diabetes Research Training Center (DRTC) of their choice and receive a weekly stipend. Application deadline for summer 2009 is **February 1, 2009**. [More...](#)

Pilot Grant on Sleepiness Disorders and Metabolism now accepting applications. Deadline is **February 20, 2009**. [More...](#)



Congratulations to Weimian He, MD from the Human Adipose Resource for winning the November 2008 **Image of the Month Award**. [More...](#)

Stella Volpe, PhD receives funding for a new NIDDK study entitled "Magnesium and the Metabolic Syndrome Trial", a randomized controlled trial assessing the effects of magnesium on the metabolic syndrome.



New Faculty

Welcome Hamdee Y. Attallah, M.D. Assistant Professor of Clinical Medicine and Section Chief, Division of Endocrinology, Philadelphia VAMC

Upcoming Seminars

[Download Spring 2009 Seminar Schedule](#)

January 6, 2009

Special Seminar

Scott Soleimanpour, MD and Sue-Anne Toh, MD

(Endocrine Fellow Presentations)

Time: 4:00 PM Location: 302 CRB

January 13, 2009

Mark A. Lemmon, PhD - "New Lessons in Regulation of the EGF Receptor Family"

Time: 4:00 PM Location: 302 CRB

January 20, 2009

Anthony J. Muslin, MD - "The Cardiac ER Stress Response"

Time: 4:00 PM Location: 302 CRB

January 27, 2009

Hakon Hakonarson, MD - "Genetics of Complex Disease Highlighting New Discoveries and Type 1 Diabetes"

Time: 4:00 PM Location: 302 CRB

New Staff

Welcome Heather Yavil, Coordinator Diabetes and Endocrinology Research Center



In The News

Page 2

The Philadelphia Inquirer

Thin is in? Tell that to a hungry mouse. A new Penn study led by **Mitchell A. Lazar, MD, PhD** is described in The Philadelphia Inquirer. [More...](#)

Diabetes: Let's get serious. **Philadelphia Daily News** has special section devoted to Diabetes with members of IDOM and the Penn Rodebaugh Diabetes Center. [More...](#)



Dr. Lazar's research team discovers key molecular partnership that coordinates body rhythms and metabolism. [More...](#)



Daniel J. Rader, MD appears on ABC's World News with Charles Gibson. [More...](#)

Stanley Schwartz, MD named Overseas Fellow of Royal Society of Medicine, London, UK

Penn Scientists Map Molecular Regulation of Fat-Cell Genetics. Implications for Treating Diabetes, Obesity, and Heart Disease. [More...](#)

David Sarwer receives RO1 Grant from NIH/NIDDK titled "Dietary Intake and Eating Behavior in Adolescents who Undergo Bariatric Surgery" which will study changes in these domains in adolescents who undergo bariatric surgery as part of the nationwide TeenLABS bariatric surgery consortium.

Recent Publications

Lefterova MI, Zhang Y, Steger DJ, Schupp M, Schug J, Cristancho A, Feng D, Zhuo D, Stoeckert Jr. CJ, Liu XS, and Lazar, MA. *PPAR γ and C/EBP factors orchestrate adipocyte biology via adjacent binding on a genome-wide scale.* Genes Dev. November 1, 2008 22:2941-2952; doi:10.1101/gad.1709008. [Read Publication...](#)

Rickels MR, Mueller R, Markmann JF, and Naji A. *Effect of GLP-1 on β - and α -cell Function in Isolated Islet and Whole Pancreas Transplant Recipients.* Clin Endocrinol Metab. 2008 Oct 28. [Read Publication...](#)

Allison KC, Lundgren, JD, O'Reardon JP, Martino NS, Sarwer DB, Wadden TA, Croby RD, Engel SG, Stunkard AJ. The Night Eating Questionnaire (NEQ): *Psychometric properties of a measure of severity of the night eating disorders.* Eating Behaviors, 2008; 9:62-72. [Read Publication...](#)

Schwartz S. *Targeting the pathophysiology of type 2 diabetes: rationale for combination therapy with pioglitazone and exenatide.* Current Medical Research and Opinion. 2008, 24:3009-3022. [Read Publication...](#)

*Your friends at the
Institute for Diabetes,
Obesity and Metabolism
wish you a very
Happy Holidays!*

SUBMIT YOUR NEWS

Please send research news, recent publications, images, honors and awards

Attention: Heather Yavil
415 Curie Blvd. 700 CRB
Philadelphia, PA 19104

Phone: 215-898-4365
Fax: 215-898-5408
Email: hyavil@mail.med.upenn.edu