

New Program:

NIH Medical
Research
Scholars
Program



Research Training
Fellowships for
Medical
Students

HHMI
HOWARD HUGHES MEDICAL INSTITUTE
OFFICE OF GRANTS AND SPECIAL PROGRAMS

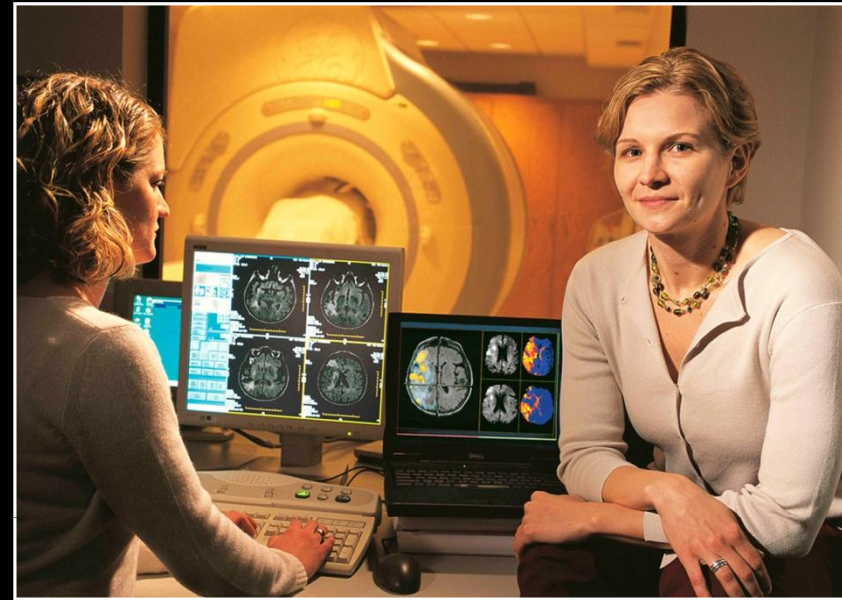
Fostering
Extraordinary
Research
Experiences
for Medical
and Dental
Students

ELIGIBILITY FOR THE PROGRAM

- U.S. citizenship not required
- In good standing at a medical, dental, or veterinary school in the U.S.
- Not currently enrolled in a combined professional degree/Ph.D. program
- Cannot have a Ph.D. in a laboratory-based biomedical science
- Do not have to be from a research-oriented school or have prior research experience
- You must be legally eligible to work in the United States during your entire HHMI research year

WHERE DO YOU WANT TO DO RESEARCH?

- **NIH Research Scholars** work at the National Institutes of Health (NIH) campus in Bethesda, MD. Your research may be a *basic*, *translational* or *clinical research* project.
- **HHMI Medical Fellows** work at any academic or non-profit research institution in the U.S., *except* the NIH. Your research may be a *basic*, *translational* or *applied* biomedical project.



NIH RESEARCH SCHOLARS

- Research experiences with intramural investigators from across NIH in basic science laboratories, and in clinical and translational research conducted at the NIH Clinical Center, the world's largest hospital dedicated to patient-oriented research.
- Incorporates the Howard Hughes Medical Institute (HHMI)-NIH Research Scholars Program (i.e. Cloister program) and the NIH Clinical Research Training Program (CRTP)
- More info to come. . . .

MEDICAL FELLOWS

- Research may be conducted abroad if mentor is affiliated with a U.S. institution
- Mentor and project chosen before you apply
- Selection of mentor and research project are *key components* of the application process
- Receive funding to attend Med Fellows regional meetings and scientific conferences



Left: Med Fellows in the Northeast regional group meet with Dr. Eric Kandel, Nobel laureate and HHMI senior investigator

Joint Initiative - Ophthalmology

- Joint initiative with the Foundation Fighting Blindness (FFB) for students conducting research in ophthalmology, particularly inherited retinal degenerative diseases
- For students interested in Ophthalmology at Penn, feel free to contact Dr. Joshua Dunaief (jdunaief@mail.med.upenn.edu), <http://www.med.upenn.edu/apps/faculty/index.php/g20000320/p6071>, for further information.

Joint Initiative – Interventional Radiology

- Joint initiative with the Society of Interventional Radiation Foundation (SIRF) for a medical student conducting preclinical research in interventional radiology

Joint Initiative - DMD



- A new initiative, through a HHMI and GM Trust (GMT) partnership, will fund up to one research fellowship for a medical student doing research in a field related to Duchenne Muscular Dystrophy (DMD).
- The purpose of the initiative is to foster the development of physician-scientists conducting research in DMD.
- For students interested in this opportunity, feel free to contact Dr. Hansell Stedman (hstedman@mail.med.upenn.edu). His lab has ongoing projects that cover the gamut from bioinformatics/ gene discovery to cardiovascular surgery/gene transfer/pathobiology in animal models for genetic cardiomyopathy.

MEDICAL FELLOWS AT JANELIA FARM



- Spend a year conducting research at the Janelia Farm Research Campus in Ashburn, VA using innovative and emerging technologies to work on neuronal networking and/or imaging at the molecular and cellular level.
- Two-step application process requiring:
 - Prescreening portion of application due by November 1
 - Interviews for selected candidates and completion of the remaining Med Fellows application components by January 11
- Live and work at Janelia Farm, receive an annual salary of \$28,000, furnished on-campus housing, health insurance, roundtrip relocation expense reimbursement, allowance for conference travel, enrichment program attendance, and many other benefits.

FINANCIAL SUPPORT

NIH Research Scholars

More info to come. . .

HHMI Medical Fellows

- Annual stipend of \$28,000
- \$5,500 fellow's allowance may be used for health care and education-related expenses incurred as part of the fellowship
- \$5,500 research allowance for travel to regional meetings, scientific meetings, books, and other research-related expenses

PROGRAM STATISTICS (2010-2011)

HHMI Medical Fellows

- 274 applicants from 74 schools
- 74 accepted from 27 schools



Applications from all qualified candidates are welcome and women and under-represented minorities are encouraged to apply. Females and under-represented minorities are proportionately represented among awardees to both programs.

APPLICATION DEADLINES

NIH Medical Research Scholars Program

- January ??, 2012

HHMI Medical Research Fellows Program

- January 11, 2012

Medical Research Fellows at Janelia Farm initiative

- Preapplication: November 1, 2011

QUESTIONS?

NIH Medical Research Scholars Program

- More info to come . . .

HHMI Medical Fellows Program

- <http://www.hhmi.org/grants/individuals/medfellows.html>

Dr. M. Celeste Simon

- celeste2@mail.med.upenn.edu