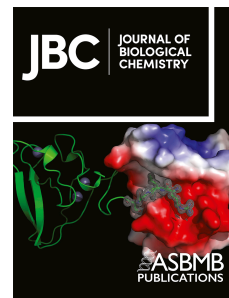


Journal Pre-proof

A minimal construct of nuclear-import receptor Karyopherin- β 2 defines the regions critical for chaperone and disaggregation activity

Charlotte M. Fare, Kevin Rhine, Andrew Lam, Sua Myong, James Shorter



PII: S0021-9258(22)01249-2

DOI: <https://doi.org/10.1016/j.jbc.2022.102806>

Reference: JBC 102806

To appear in: *Journal of Biological Chemistry*

Received Date: 19 September 2022

Revised Date: 2 December 2022

Accepted Date: 5 December 2022

Please cite this article as: Fare CM, Rhine K, Lam A, Myong S, Shorter J, A minimal construct of nuclear-import receptor Karyopherin- β 2 defines the regions critical for chaperone and disaggregation activity, *Journal of Biological Chemistry* (2023), doi: <https://doi.org/10.1016/j.jbc.2022.102806>.

This is a PDF file of an article that has undergone enhancements after acceptance, such as the addition of a cover page and metadata, and formatting for readability, but it is not yet the definitive version of record. This version will undergo additional copyediting, typesetting and review before it is published in its final form, but we are providing this version to give early visibility of the article. Please note that, during the production process, errors may be discovered which could affect the content, and all legal disclaimers that apply to the journal pertain.

© 2022 THE AUTHORS. Published by Elsevier Inc on behalf of American Society for Biochemistry and Molecular Biology.

A minimal construct of nuclear-import receptor Karyopherin- β 2 defines the regions critical for chaperone and disaggregation activity.

Charlotte M. Fare^{1,2}, Kevin Rhine^{3,4}, Andrew Lam¹, Sua Myong^{3,4}, and James Shorter^{1,2*}.

¹Department of Biochemistry and Biophysics, ²Biochemistry and Molecular Biophysics Graduate Group, Perelman School of Medicine at the University of Pennsylvania, Philadelphia, PA 19104. U.S.A.

³Program in Cell, Molecular, Developmental Biology, and Biophysics, ⁴Department of Biophysics, Johns Hopkins University, Baltimore, Maryland 21218. U.S.A.

*Correspondence: jshorter@pennmedicine.upenn.edu

Running title: Molecular determinants of Karyopherin- β 2 chaperone activity.

Keywords: nuclear-import receptor, FUS, nucleocytoplasmic transport, chaperone, disaggregase, phase separation

Abstract

Karyopherin- β 2 (Kap β 2) is a nuclear-import receptor that recognizes proline-tyrosine nuclear localization signals (PY-NLSs) of diverse cytoplasmic cargo for transport to the nucleus. Kap β 2 cargo include several disease-linked RNA-binding proteins (RBPs) with prion-like domains (PrLDs), such as FUS, TAF15, EWSR1, hnRNPA1, and hnRNPA2. These RBPs with PrLDs are linked via pathology and genetics to debilitating degenerative disorders, including amyotrophic lateral sclerosis (ALS), frontotemporal dementia (FTD), and multisystem proteinopathy (MSP). Remarkably, Kap β 2 prevents and reverses aberrant phase transitions of these cargo, which is cytoprotective. However, the molecular determinants of Kap β 2 that enable these activities remain poorly understood, particularly from the standpoint of nuclear-import receptor architecture. Kap β 2 is a super-helical protein comprised of 20 HEAT repeats. Here, we design truncated variants of Kap β 2 and assess their ability to antagonize FUS aggregation and toxicity in yeast and FUS condensation at the pure protein level and in human cells. We find that HEAT repeats 8-20 of Kap β 2 recapitulate all salient features of Kap β 2 activity. By contrast, Kap β 2 truncations lacking even a single cargo-binding HEAT repeat display reduced activity. Thus, we define a minimal Kap β 2 construct for delivery in adeno-associated viruses as a potential therapeutic for ALS/FTD, MSP, and related disorders.

Introduction

Karyopherin- β 2 (Kap β 2; also known as Transportin 1) is a nuclear-import receptor (NIR) that transports proteins bearing a proline-tyrosine nuclear localization signal (PY-NLS) from the cytoplasm to the nucleus (1-4). Kap β 2, like other NIRs, promotes nuclear import based on the presence of an asymmetric Ran gradient (3,5). Ran is a small GTPase, and its GTPase-activating protein (GAP), RanGAP1, is restricted to the cytoplasm, whereas its guanine-nucleotide-exchange factor (GEF), RCC1, is localized to the nucleus (3,5). Thus, Ran-GDP is predominant in the cytoplasm, whereas Ran-GTP is predominant in the nucleus (3,5,6). Kap β 2 has a low affinity for Ran-GDP, which permits Kap β 2 interactions with cargo in the cytoplasm (3,7). Once in the nucleus, Kap β 2 is engaged tightly by Ran-GTP, which elicits a conformational change in Kap β 2 that releases cargo and liberates Kap β 2 for repeated rounds of nuclear import (3,7-10).

The best-characterized class of cargo recognized by Kap β 2 are proteins bearing a PY-NLS (1,2,11-14). The PY-NLS is defined by three distinct epitopes that each contribute to cargo-recognition. A hydrophobic or basic motif is epitope 1, which is followed by a R-X₂₋₅-PY motif where R-X₂₋₅ is epitope 2 and the C-terminal PY is epitope 3 (1,12,13). Kap β 2 was initially described with respect to its role in nuclear import (7,10,11,15). More recently, Kap β 2 has been defined as a potent molecular chaperone that can prevent and reverse aberrant phase transitions of its specific cargo (16-24).

The newly appreciated chaperone and disaggregation activity of Kap β 2 could have therapeutic utility (6,25-28). Indeed, several of the cargo recognized by Kap β 2 are prominent RNA-binding proteins (RBPs) with prion-like domains (PrLDs), which are connected to neurodegenerative disease via both pathology and genetics, including FUS, hnRNPA1, hnRNPA2, TAF15, and EWSR1 (8,10,11,15,16,29-34). In particular, mutations in genes encoding RBPs with PrLDs can cause amyotrophic lateral sclerosis (ALS), frontotemporal dementia (FTD), multisystem proteinopathy (MSP), oculopharyngeal muscular dystrophy, hereditary motor neuropathy, and related disorders (35-42). In postmortem brain tissue of ALS/FTD patients, specific nuclear RBPs with PrLDs have been found to be depleted from the nucleus and mislocalized and aggregated in the cytoplasm of degenerating neurons (37,38,43-49). The manner by which cytoplasmic mislocalization of specific RBPs with PrLDs elicits neurodegeneration has two dimensions: (1) RBPs play an essential role in RNA metabolism (28,45,50-52), and their cytoplasmic mislocalization may elicit loss-of-function phenotypes that contribute to toxicity; and

(2) the insoluble cytoplasmic forms of these RBPs may be intrinsically toxic (43,53-58), indicating a gain-of-function mechanism of toxicity.

Despite the potential risk of forming toxic assemblies, the ability for RBPs to self-assemble into phase-separated states also has biological utility (28,59-61). RBPs with PrLDs can mediate multivalent intermolecular contacts, allowing them to self-associate and condense into phase-separated bodies (28,56,59,62-65). In particular, RBPs with PrLDs like FUS and hnRNPA1 partition into stress granules (SGs), phase-separated membraneless organelles that form in the cytoplasm in response to stress (16,28,39,56,63,66-69). Dysregulation of SGs has been implicated in the appearance of cytoplasmic aggregates, which are associated with the development of ALS/FTD and MSP (31,39,56,63,70-72). Indeed, liquid condensates formed by RBPs with PrLDs can mature into pathological solid phases comprised of cross- β fibrils that are associated with disease, and this process is often accelerated by disease-linked mutations (20,56,70,73). Ensuring that RBPs do not get trapped in toxic pathological phases is a problem that all cells must solve (25,26,28).

Cells have evolved agents to dissolve aberrant protein states, including NIRs (6,25,26). *In vitro*, Kap β 2 prevents and reverses the formation liquid-like condensates, dense hydrogels, and solid-like fibrils by RBP cargo, including FUS and hnRNPA1 (16-22,24). Moreover, Kap β 2 performs these activities *in vivo* to antagonize the formation of cytoplasmic RBP aggregates, restore functional RBPs to the nucleus, and mitigate disease-linked RBP toxicity (6,16,27). Thus, by combining chaperone and nuclear-import activities, Kap β 2 antagonizes cytoplasmic RBP aggregation and the loss of RBP function in the nucleus (16).

In addition to recognizing cargo with a PY-NLS, Kap β 2 exhibits NLS-independent chaperone activity (27,74). For example, Kap β 2 can antagonize aberrant phase transitions and interactions of ALS/FTD-associated non-native poly(GR) and poly(PR) dipeptide-repeat proteins (DPRs) produced by repeat-associated non-AUG (RAN) translation of the pathogenic G₄C₂ hexanucleotide repeat expansion in the *C9ORF72* gene (27,74-77). This Kap β 2 activity is neuroprotective (78). Kap β 2 mediates this chaperone activity by interacting with arginine residues, a strategy that is employed by a host of NIRs to chaperone a network of native and mutant clients (22,23).

Kap β 2 chaperone activity is limited by its affinity for cargo. Kap β 2 typically recognizes cargo with nanomolar affinity (1,12,14,23). Two tryptophan residues, W460 and W730, on the cargo-binding surface of Kap β 2 play a critical role in cargo recognition, as they participate in hydrophobic sidechain stacking interactions with the PY-NLS (1). Importantly, a mutant form of Kap β 2, Kap β 2^{W460A:W730A}, which has reduced affinity for PY-NLS-bearing cargo displays reduced chaperone activity (1,16).

Mutations that affect the PY-NLS or the biophysical properties of its cargo can also reduce Kap β 2 function (16,20,41). PY-NLS mutations can be particularly devastating and cause juvenile ALS, as with FUS^{P525L}, where the conserved proline of the PY-NLS is mutated to leucine (79,80). Such aggressive pathology is explained at the molecular level, as Kap β 2 can have significantly lower affinity for PY-NLS mutant protein (14,16,17,23,81). Kap β 2 does show activity against PY-NLS mutants, but higher Kap β 2 concentrations are required for robust effects (16,19,23). Moreover, mutations outside of the PY-NLS can hamper Kap β 2 activity. For example, when Kap β 2 is added to self-assembled FUS harboring specific disease-linked mutations outside the PY-NLS that reduce the dynamics of FUS self-assembly, it can only partially restore wild-type (WT) FUS-like behavior (20,24). Thus, even when a cargo PY-NLS is intact, other more distributed secondary interactions are critical for Kap β 2 chaperone activity (16,19). Beyond these insights, however, it remains unclear how Kap β 2 chaperones and disaggregates its cargo.

Here, to probe the mechanism by which Kap β 2 chaperones cargo, we rationally design truncated variants of Kap β 2 and assess their activity. Specifically, we assess their ability to: (1) antagonize FUS aggregation and toxicity in yeast, (2) antagonize FUS condensation at the pure protein level, and (3) antagonize FUS condensation in human cells. We find that a C-terminal fragment of Kap β 2 that contains all cargo-binding residues can perform chaperone activity *in vitro* and can chaperone FUS in yeast and human cells to a similar extent as Kap β 2. At a minimum, our findings illuminate key mechanistic aspects of Kap β 2 chaperone activity with respect to NIR architecture. Moreover, we reveal a minimal Kap β 2 construct that might be more readily delivered in adeno-associated viruses (AAVs) as a potential therapeutic for several debilitating degenerative disorders.

Results

Designing Truncated Kap β 2 Variants to Define the Molecular Determinants of Chaperone Activity. Kap β 2 combines cargo recognition and nuclear delivery in a single NIR (6,82). Kap β 2 is a super-helical protein that is comprised of 20 HEAT (Huntington, Elongation factor 3, A subunit of protein phosphatase 2A, and Tor1 kinase) repeats (83). Each HEAT repeat is a protein tandem repeat structural motif (~30–40 residues) composed of two anti-parallel alpha helices (referred to as A- and B-helices) that are typically connected by a short loop (84). The super-helical conformation of Kap β 2 is found in the unbound state, and when Kap β 2 is bound to Ran-GTP or FUS PY-NLS cargo (14,83,85) (**Figure 1A**). Comparing the crystal structure of unbound Kap β 2 with that of Ran-GTP-bound and cargo (FUS PY-NLS)-bound Kap β 2 reveals three functionally distinct segments (86). In the presence of Ran-GTP, an N-terminal segment (N1) consisting of HEAT repeats 1-8 (H1-H8) interacts with Ran-GTP in the nucleus to facilitate cargo release (86) (**Figure 1A**). In the cytoplasm, two C-terminal segments, H9-H13 (C1) and H14-H18 (C2), rotate about a flexible hinge in H13-H14 in response to cargo loading (7,83,86) (**Figure 1A**). In the unbound state, N-terminal H1-H4 and C-terminal H19-H20 exhibit flexibility (86).

Each segment of Kap β 2 contains residues that engage PY-NLS epitopes (1,86). H8 of N1 and H9-H10 of C1 interact with the PY residues of epitope 3, H11-H13 of C1 and H14 of C2 interact with epitope 2, and H14-H17 of C2 interact with the hydrophobic/basic epitope 1 (1,14,86) (**Figure 1B, C**). The energetic importance of each epitope of the PY-NLS for Kap β 2 binding varies across different cargo, and so the extent to which Kap β 2 depends on the recognition of any specific epitope for a given cargo protein can be difficult to assess *a priori* (1,12,83,86,87). However, there are key interactions that appear critical for many cargo, such as the interactions with epitopes 1 and 3 that are impacted by the Kap β 2^{W460A:W730A} mutant (1,16).

To determine the role of each of the larger structural elements of Kap β 2 with respect to chaperone activity, we designed seven truncated Kap β 2 constructs that span the length of the protein (**Figure 1D**). The truncations were designed to probe the importance of the distribution of Kap β 2 residues that contact cargo, paying special attention to the residues that make direct contact with the PY epitope of the PY-NLS (1,12,14,87).

First, H1-H4 (residues 1-171) was designed to test the N-terminal region of Kap β 2 (**Figure 1D**). This region engages Ran-GTP but is not known to engage FUS (**Figure 1A**). Hence, we do not anticipate this construct will have chaperone activity.

Second, H1-H10 (residues 1-477) contains segment N1 and the two N-terminal HEAT repeats of segment C1, which contain all the residues that interact with the PY-epitope of FUS, including W460 (**Figure 1C, D**). If H1-H10 can chaperone FUS as effectively as Kap β 2, then recognition of the PY-epitope alone would be sufficient for chaperone activity.

Third, H1-H13 (residues 1-604) contains segments N1 and C1 which contain the residues that engage epitopes 2 and 3 (**Figure 1C, D**). If H1-H13 can chaperone FUS as effectively as Kap β 2, then recognition of epitopes 2 and 3 would be sufficient for chaperone activity.

Fourth, H8-E (HEAT repeat 8 to end; residues 271-890) harbors HEAT repeat 8 from N1 plus both C-terminal segments which contain all the residues that contact each epitope of the FUS PY-NLS (**Figure 1C, D**). If H8-E can chaperone FUS as effectively as Kap β 2, then recognition of epitopes 1, 2, and 3 would be sufficient for chaperone activity.

Fifth, H8-H16 (residues 271-739) harbors a subset of the residues that interact with epitope 1 and all the residues that contact epitope 2 and 3, including W730 (**Figure 1C, D**). If H8-H16 can chaperone FUS as effectively as Kap β 2, then partial recognition of epitope 1 plus contacts with epitope 2 and 3 would be sufficient for chaperone activity.

Sixth, H9-E (residues 378-890) contains segment C1 and C2, and contacts both residues of the PY-epitope, albeit less extensively than H8-E, and contains all contacts for epitopes 1 and 2 (**Figure 1C, D**). If H9-E can chaperone FUS as effectively as Kap β 2, then partial recognition of epitope 3 plus contacts with epitope 1 and 2 would be sufficient for chaperone activity.

Seventh, H12-E (residues 516-890) contains part of segment C1 and all of segment C2, thereby retaining all the contacts for epitope 1 and a subset of contacts for epitope 2 (**Figure 1C, D**). If H12-E can chaperone FUS as effectively as Kap β 2, then the PY-epitope would be dispensable for Kap β 2 to chaperone cargo. We do not expect this possibility given the importance of the PY-epitope integrity for human health (16,23,41,48,79,80). Collectively, this set of Kap β 2

truncations will enable us to define structural and sequence characteristics of Kap β 2 that are critical for its chaperone activity.

A C-terminal Fragment of Kap β 2, H8-E, Mitigates FUS Toxicity in Yeast. To determine whether truncated Kap β 2 proteins retain chaperone activity, we expressed each construct in a yeast model of FUS proteinopathy. For these studies, we utilized a yeast strain lacking Hsp104, a powerful protein disaggregase that is not found in humans (26,88-91). Overexpression of FUS in this system elicits cytoplasmic FUS aggregation and toxicity, thereby mimicking phenotypes of degenerating neurons in ALS/FTD with FUS pathology (35,92-94). Indeed, elevated FUS expression is linked to ALS (95,96). Our yeast model of FUS proteinopathy has illuminated several genetic modifiers of FUS aggregation and toxicity, which have translated to fly, mammalian cell and neuronal models of ALS/FTD (16,18,92-94,97-102). Additionally, the yeast homolog of Kap β 2, Kap104, does not engage FUS effectively and cannot transport FUS into the nucleus, providing a simple system for measuring the specific activity of Kap β 2 (13,16,92,93).

First, we tested whether expression of the Kap β 2 constructs on their own was toxic in yeast. Generally, the Kap β 2 constructs were not overtly toxic (**Figure S1A**). Unexpectedly, however, H1-H10 exhibited some toxicity as did H8-E to a lesser extent (**Figure S1A**). Next, we tested whether truncated forms of Kap β 2 could mitigate FUS toxicity in yeast. Full-length (FL), WT Kap β 2 mitigates FUS toxicity in yeast (**Figure 2A**) without affecting FUS expression levels (**Figure 2B**). Of the Kap β 2 truncations tested here, those which lack the complete set of FUS-interacting residues (**Figure 1C, D**), did not mitigate FUS toxicity (**Figure 2A**). Thus, H1-H4 (no FUS-binding residues), H1-H10 (lacks epitope 1- and 2-binding residues), H1-H13 (lacks epitope 1-binding residues), H8-H16 (lacks epitope 1-binding residues in H17), H9-E (lacks epitope 3-binding residues in H8), and H12-E (lacks epitope 2 and 3-binding residues in H8-H11) did not mitigate FUS toxicity (**Figure 1C, 2A**). Perhaps most surprising was the ineffectiveness of H9-E and H8-16, each of which only lack a few FUS-binding residues and retain both W460 and W730 (**Figure 1C**). Thus, the absence of even a few FUS-binding residues reduces the ability of Kap β 2 to mitigate FUS toxicity in yeast.

We also tested Kap β 2^{W460A:W730A} (**Figure S1B-D**), which has just two FUS-binding residues mutated. Kap β 2^{W460A:W730A} was slightly toxic when expressed alone in yeast (**Figure S1D**). Kap β 2^{W460A:W730A} was unable to effectively mitigate FUS toxicity, despite being expressed at

similar levels to Kap β 2 (**Figure S1B, C**). Thus, mutating just two residues in Kap β 2 that engage epitope 1 (W730) and epitope 3 (W460) of the FUS-PY-NLS, reduces Kap β 2 activity (16).

In contrast, an N-terminal Kap β 2 truncation that begins at H8 (H8-E, residues 271-890; **Figure 1D**) mitigates FUS toxicity without affecting FUS expression level (**Figure 2A, B**). H8-E is the only truncation tested here that contains all the Kap β 2 residues that bind the FUS PY-NLS, as well as the acidic loop in H8, which is necessary for cargo release in the nucleus (1,12,14). Our findings suggest that the entire cargo-binding surface of Kap β 2 is required for Kap β 2 to mitigate FUS toxicity in yeast.

There are several possible explanations for why an N- or C-terminally truncated Kap β 2 construct might not mitigate FUS toxicity despite retaining the residues known to contact each epitope of the PY-NLS, including the critical Trp residues at positions 460 and 730. For example, a truncated construct may not be stable or may be expressed poorly. However, low expression did not appear to be an issue. Using an antibody that recognizes an epitope in H8 of Kap β 2, we found that H1-H10, H1-H13, H8-E, and H8-H16 were all expressed in yeast, although H8-H16 was expressed at lower levels (**Figure 2B**). We were unable to detect H1-H4, H9-E, and H12-E with this antibody (**Figure 2B**). Thus, to detect the other Kap β 2 truncations that lack H8, we appended a C-terminal FLAG tag to each construct to enable detection via immunoblot using anti-FLAG antibodies.

We next tested the toxicity of the FLAG-tagged Kap β 2 truncations in the absence of FUS expression. Generally, the Kap β 2-FLAG constructs were not toxic, although Kap β 2-FLAG and H8-E-FLAG were very slightly toxic, whereas H1-H10-FLAG was toxic (**Figure S1E**). As with untagged Kap β 2 constructs, only FL Kap β 2-FLAG and H8-E-FLAG mitigated FUS toxicity in yeast without affecting FUS expression (**Figure 2C, D**). All other Kap β 2 truncations were ineffective (**Figure 2C**). The activity of FL Kap β 2-FLAG was reduced compared to untagged FL Kap β 2 despite similar expression levels, but Kap β 2-FLAG could still mitigate FUS toxicity (**Figure 2C, S1F**). Importantly, H8-E-FLAG strongly reduced FUS toxicity (**Figure 2C**).

Western blots revealed that there was some variation in Kap β 2-FLAG construct expression (**Figure 2D, E**). For example, H12-E-FLAG was expressed at consistently lower levels than FL Kap β 2-FLAG (**Figure 2D, E**). H9-E-FLAG was also expressed at lower levels than FL Kap β 2-FLAG (**Figure 2D, E**). Due to variability between samples, however, these differences were not

statistically significant (**Figure 2E**). Hence, it remains somewhat uncertain whether reduced expression of H12-E-FLAG or H9-E-FLAG contributes to limited mitigation of FUS toxicity. Nevertheless, each construct was detectable via Western blot when probed with the anti-FLAG antibody. Thus, all the Kap β 2 constructs were expressed, and H1-H4-FLAG, H1-10-FLAG, H1-H13-FLAG, H8-E-FLAG, and H8-H16-FLAG were expressed at similar or increased levels compared to FL Kap β 2-FLAG (**Figure 2D, E**). However, only FL Kap β 2 and H8-E were able to mitigate FUS toxicity. Our findings suggest that when any single set of epitope contacts is lost, Kap β 2 is no longer able to mitigate FUS toxicity in yeast.

Truncated Kap β 2 Proteins Promote FUS Solubility and Nuclear Localization in Yeast. We next determined whether truncated Kap β 2 variants could suppress FUS aggregation and promote nuclear FUS localization in yeast. We did not explore the H1-H10 construct further due to its toxicity (**Figure S1A, E**). Yeast cells expressing FUS-GFP form cytoplasmic aggregates (92-94,99,103). Previously, we have found that potentiated variants of the Hsp104 disaggregase can dissolve these FUS aggregates without localizing FUS to the nucleus (94,97-99,103). By contrast, FL Kap β 2 suppresses FUS aggregation in yeast and localizes FUS to the nucleus (**Figure 3A-C**) (16). For the Kap β 2 truncations expressed here, the ratio of FUS-GFP expression to the loading control, α -tubulin, is relatively constant (**Figure 3D**). Thus, the chaperone activity observed is attributable to Kap β 2 activity, and not degradation or reduced expression of FUS.

Among the truncated Kap β 2 proteins, we observed a range of phenotypes. H1-H4-FLAG, H8-H16, and H12-E-FLAG were unable to prevent FUS aggregation or localize FUS to the nucleus (**Figure 3A-C**). By contrast, H1-H13 and H9-E-FLAG exhibited an intermediate phenotype. These truncations were unable to localize FUS to the nucleus but did reduce the percentage of cells with cytoplasmic FUS foci (**Figure 3A-C**). This phenotype is distinct from yeast expressing FUS-GFP and Kap β 2^{W460A:W730A}, which neither dissolves cytoplasmic FUS aggregates nor promotes FUS nuclear localization (16). Western blot confirmed that the lower level of cytoplasmic FUS foci is not due to increased expression of the Kap β 2 truncation, as H9-E-FLAG is expressed at lower levels than Kap β 2-FLAG (**Figure 3D**). Thus, a decrease in cytoplasmic FUS foci without increased nuclear localization suggests that, in yeast, H1-H13 and H9-E-FLAG may partially inhibit FUS aggregation in the cytoplasm but are inactive as NIRs.

The partial inhibition of FUS aggregation by H1-H13 and H9-E-FLAG was insufficient to mitigate FUS toxicity (**Figure 2A, C**). FUS must aggregate in the cytoplasm *and* bind RNA to confer toxicity in yeast (93). Kap β 2 can cause FUS to eject bound RNA (17,19). Hence, it may be that truncated Kap β 2 proteins have reduced ability to eject bound RNA from FUS. Thus, FUS would continue to sequester important RNA transcripts and confer toxicity in yeast. Alternatively, the limited effect on FUS aggregation by H1-H13 or H9-E-FLAG may simply be insufficient to reduce FUS toxicity.

Consistent with the ability to mitigate FUS toxicity as well as Kap β 2, H8-E robustly suppresses FUS aggregation and localizes FUS to nucleus (**Figure 3A-C**). This finding suggests that all the information needed to chaperone FUS and transport it to the nucleus is encoded in HEAT repeats 8-20.

A C-terminal Fragment of Kap β 2, H8-E, Robustly Prevents FUS Fibrillization in Vitro. For a more direct assessment of the chaperone activity of truncated Kap β 2 variants, we purified recombinant Kap β 2, Kap β 2^{W460A:W730A}, various Kap β 2 truncations (**Figure S2A**), and FUS to measure chaperone activity *in vitro*. FUS is intrinsically aggregation-prone, and thus to maintain solubility during purification, FUS was purified with an N-terminal GST-tag (93). The bulky nature of GST precludes the PrLDs of FUS molecules from interacting with each other, thus preventing fibrillization (93). Additionally, there is a linker between the GST-tag and FUS which contains a TEV protease cleavage site. Thus, TEV protease can be utilized to initiate FUS fibrillization, which can be tracked via turbidity measurements (16,93). Upon cleavage of GST-FUS with TEV protease, liberated FUS rapidly assembles into fibrils, which can be detected by an increase in turbidity (absorbance at 395 nm) (16,37,38,93). The FUS fibrils that form *in vitro* resemble the fibrils observed in postmortem tissue and are toxic to neurons in culture, and thus represent a biologically relevant structure to study (62,93).

Purification of Kap β 2, Kap β 2^{W460A:W730A}, H1-H13, and H8-E was routine (**Figure S2A**). However, we noticed that the expression, yield, and purity of H9-E were lower than for H1-H13 or H8-E (**Figure S2A**). Previous work has indicated that HEAT-repeat proteins can be sensitive to truncation (104,105). In structural studies of other HEAT-repeat proteins, some truncations are stable, whereas others are aggregation-prone (104,105). Indeed, purified H8-H16, which is inactive in yeast (**Figure 2A, C, 3A-C**), is even more unstable than H9-E *in vitro* and becomes insoluble upon cleavage of its His-SUMO solubility tag by ubiquitin-like-specific protease 1

(Ulp1). This instability of H8-H16 suggests that C-terminal H17-H20 are important for protein stability in the absence of H1-H7. To circumvent this issue, we purified His-SUMO-tagged H8-H16 without cleavage (**Figure S2A**). FL Kap β 2 chaperone activity is nearly identical between the Ulp1-cleaved and uncleaved constructs (**Figure S2B, C**), indicating there is no effect of the His-SUMO tag itself on chaperone activity for FL Kap β 2. Thus, we do not anticipate that the His-SUMO tag would affect activity of the H8-H16 construct. However, in the context of H8-H16 the His-SUMO tag is closer to the FUS-binding site, which might potentially have some effect on activity. Nonetheless, H8-H16 displays no activity against FUS in yeast (**Figure 2A, C, 3A-C**), indicating that this construct may be defective.

Next, we assessed the extent of FUS fibrillization in the presence of increasing concentrations of each Kap β 2 construct (**Figure 4A-F, S2D, E**). FL Kap β 2 suppresses FUS fibrillization at sub-stoichiometric levels (**Figure 4A, S2E**) (16). By contrast, Kap β 2^{W460A:W730A} does not effectively prevent FUS fibrillization, even at over 3-fold excess (**Figure S2D, E**). Likewise, purified His-SUMO-H8-H16 and H9-E were unable to effectively prevent FUS fibrillization (**Figure 4E, F, S2E**). In agreement with the reduction in cytoplasmic FUS-GFP foci in yeast expressing H1-H13, H1-H13 can partially inhibit FUS fibrillization *in vitro*, but only at very high levels (**Figure 4B, S2E**). Indeed, at the highest concentration tested, H1-H13 reduces FUS fibrillization to only ~40% (**Figure 4B, S2E**). In line with the suppression of FUS aggregation and toxicity observed in yeast, H8-E robustly prevents FUS fibrillization *in vitro* (**Figure 4C, S2E**). Calculating the half maximal inhibitory concentration (IC₅₀) of each construct for prevention of FUS fibrillization reveals that H8-E can prevent FUS fibrillization as effectively as FL Kap β 2 (**Figure 4D**). Our findings suggest that the entire FUS-binding region of Kap β 2 is required to enable maximal inhibition of FUS fibrillization *in vitro*.

H8-E Reverses FUS Fibrillization in Vitro Nearly as Effectively as Kap β 2. In addition to preventing the fibrillization of its cargo, Kap β 2 can also reverse the formation of pre-formed fibrils (16). However, more Kap β 2 is required to reverse FUS fibrillization than to prevent fibrillization (16). Thus, focusing on the truncations that had the most significant effect on preventing FUS fibrillization, H1-H13 and H8-E, we next determined whether truncated variants of Kap β 2 could disaggregate pre-formed FUS fibrils. For these experiments, FUS fibrillization was initiated by the addition of TEV protease in the absence of Kap β 2. After one hour of FUS fibrillization when abundant FUS fibrils are present (93), Kap β 2 was added, and turbidity was monitored.

As expected, FL Kap β 2 rapidly disaggregates FUS fibrils (**Figure 5A**) (16,106). FL Kap β 2 completely disaggregates FUS fibrils after 10 minutes at a ratio of ~3:1 Kap β 2 to FUS (**Figure 5A**). By contrast, Kap β 2^{W460A:W730A} was unable to disaggregate preformed FUS fibrils (**Figure S3A, B**). H1-H13 was also ineffective at disaggregating FUS fibrils, but displayed some activity (**Figure 5B, S3B**). At the highest concentration tested, H1-H13 was able to reduce turbidity by ~50% after 80 minutes (**Figure 5B**). Additionally, the shape of the FUS disaggregation curve for H1-H13 is distinct from what is observed with FL Kap β 2 (**Figure 5A, B**). For FL Kap β 2, FUS disaggregation begins immediately after addition and decreases rapidly (**Figure 5A**). By contrast, addition of H1-H13 initially causes a sharp decline in FUS turbidity, followed by apparent re-aggregation and subsequent slow disaggregation (**Figure 5B**). These data indicate that H1-H13 has limited ability to effectively disaggregate FUS.

Importantly, H8-E is a robust chaperone that readily disaggregates pre-formed FUS fibrils (**Figure 5C, S3B**). However, H8-E requires a longer time to completely disaggregate FUS, as complete disaggregation is not achieved until ~20 minutes (**Figure 5C**), whereas FL Kap β 2 only requires ~10 minutes (**Figure 5A**). Moreover, the half maximal effective concentration (EC₅₀) of H8-E required to disaggregate FUS is ~2-fold higher than for FL Kap β 2 (**Figure 5D**). Thus, H8-E can disaggregate FUS fibrils at sub-stoichiometric levels, but it is unable to disaggregate FUS fibrils as effectively as FL Kap β 2. Our findings suggest that the N-terminal H1-H7 region of Kap β 2 is more critical for optimal reversal of FUS fibrillization than for inhibition of FUS fibrillization. Indeed, the N-terminal H1-H7 region of Kap β 2 appears to enable optimal disaggregation activity.

H8-E Dissolves Preformed FUS Liquid Condensates. FUS undergoes liquid-liquid phase separation to spontaneously form dynamic condensates, which are important for FUS functionality, but may precede pathological aggregation, and thus require vigilant chaperoning (54,61,65,70,107,108). *In vitro*, FUS readily forms liquid condensates in the presence of Cy3-labeled poly(U) RNA (20). Thus, we next tested if the Kap β 2 truncations that effectively work on solid-like FUS fibrils would also dissolve heterotypic liquid-liquid phase separated FUS:RNA condensates. FL Kap β 2 can dissolve preformed FUS:RNA condensates, resolubilizing both the RNA (**Figure 6A**) and FUS (**Figure 6B**) components of these condensates (20,21,24). FL Kap β 2 reduces the number of FUS:RNA droplets (**Figure 6C**), the total area of these structures (**Figure 6D**), and the average size of the individual remaining droplets (**Figure 6E**). H1-H13 also

significantly reduced the number and total area of FUS:RNA droplets after addition, but only by ~44% as opposed to the near 100% reduction observed for FL Kap β 2 (**Figure 6A-D**). However, the average droplet size was unchanged by H1-H13 (**Figure 6E**). These data are consistent with the limited ability of H1-H13 to antagonize FUS fibrillization (**Figure 5B**).

Like FL Kap β 2, H8-E significantly reduced the number, total area, and average size of FUS:RNA droplets, performing as effectively as Kap β 2 (**Figure 6A-E**). The total number and area of droplets resulting after treatment with Kap β 2 and H8-E is similar (**Figure 6C, D**), but the average size of the remaining droplets is lower for H8-E (**Figure 6E**). Thus, the few droplets that remain in the presence of H8-E are even smaller than those that remain with Kap β 2. Our findings suggest that H8-E effectively dissolves FUS liquids, and in this context the N-terminal H1-H7 of Kap β 2 is less important. Hence, it appears that the N-terminal H1-H7 region of Kap β 2 is critical for optimal disaggregation of solid FUS condensates but not liquid FUS condensates.

Truncated Kap β 2 Proteins Reduce Cytoplasmic Foci and Restore Nuclear Localization in Human Cells. Finally, we explored how Kap β 2 and truncation variants might affect FUS condensation and localization in human cells. The overexpression of GFP-FUS plus mCherry (negative control) in Henrietta Lacks' (HeLa) cells induces the formation of cytoplasmic FUS foci (**Figure 7A, B**). Coexpression of mCherry-FL-Kap β 2 significantly reduced the formation of cytoplasmic FUS foci (**Figure 7A, B**). In contrast, expression of mCherry-Kap β 2^{W460A:W730A} exacerbates formation of cytoplasmic FUS foci (**Figure 7A, B**). Of the truncation constructs, neither mCherry-H1-H10 nor mCherry-H12-E reduced the percentage of cells with cytoplasmic FUS foci (**Figure 7A, B**). Coexpression of mCherry-H8-E or mCherry-H1-H13 reduced the percentage of cells with cytoplasmic FUS foci to a similar extent as Kap β 2 (**Figure 7A, B**). Unexpectedly, H9-E also reduced formation of cytoplasmic FUS foci (**Figure 7A, B**). mCherry-H8-H16 was barely visible via microscopy, and was not detected via western blot, and thus was not analyzed further (**Figure S4**). Moreover, there was variable expression of each expressed Kap β 2 construct (**Figure S4**). FL Kap β 2, Kap β 2^{W460A:W730A}, H1-H10, and H12-E were each robustly expressed, whereas H1-H13, H8-E, and H9-E were expressed at lower levels (**Figure S4**). However, despite the low expression, H1-H13, H8-E, and H9-E mitigated formation of cytoplasmic FUS foci (**Figure 7A, B**). Moreover, GFP-FUS was similarly expressed across all cells relative to the α -tubulin loading control (**Figure S4**). Thus, differences in FUS expression do not contribute to the reduced formation of cytoplasmic FUS foci.

We next assessed the ratio GFP-FUS signal coming from the cytoplasm and the nucleus to measure how proficient each construct is as a NIR (**Figure 7C**). As expected, expression of Kap β 2 promoted nuclear localization of GFP-FUS significantly more than expression of mCherry alone (**Figure 7C**). Conversely, Kap β 2^{W460A:W730A} did not increase the fraction of GFP-FUS in the nucleus (**Figure 7C**). Similar to their inability to reduce cytoplasmic FUS foci, H1-H10 and H12-E were also unable to restore nuclear localization of FUS as well as Kap β 2 (**Figure 7C**). By contrast, H8-E promoted nuclear localization of GFP-FUS as effectively as Kap β 2.

Curiously, H1-H13 and H9-E also promoted nuclear localization of GFP-FUS as well as Kap β 2 (**Figure 7C**). This finding was unexpected, as in yeast these truncations could only reduce cytoplasmic foci (**Figure 3B, C**). However, one important difference between the yeast and HeLa cell models is that yeast lack Kap β 2. Indeed, yeast utilize Kap104 to perform Kap β 2-like transport activity (12,13,109). Although Kap104 can weakly bind to the PY-NLS of FUS, Kap104 preferentially binds basic PY-NLS sequences, whereas FUS harbors a hydrophobic PY-NLS (13,14). Indeed, any *in vitro* binding capacity Kap104 may retain for FUS is insufficient for chaperone activity in yeast when FUS is overexpressed (**Figure 2**) (16,92,93). By contrast, HeLa cells harbor endogenous Kap β 2. Thus, even low levels of truncated Kap β 2 variants may be able to collaborate with endogenous Kap β 2 to effectively reduce formation of cytoplasmic FUS foci and promote nuclear localization of FUS. Indeed, in HeLa cells, there is a noticeable increase in the cytoplasmic mCherry signal for H1-H10, H1-H13, H9-E, and H12-E, suggesting these proteins may be defective for nuclear import (**Figure 7A**). The increased levels of cytoplasmic truncated Kap β 2 suggest that all truncations except H8-E are deficient in their ability to traverse in and out of the nucleus, but retain some inherent chaperone activity in the cytoplasm that cooperates with endogenous Kap β 2. In yeast, this cytoplasmic chaperone activity manifests as a diffuse cytoplasmic FUS signal as Kap104 does not import FUS into the nucleus (13,92,93). In HeLa cells, cytoplasmic chaperone activity may help liberate FUS from cytoplasmic foci, making it available to the endogenous transport-competent Kap β 2.

Our findings suggest that H8-E is a robust chaperone, performing as well as FL Kap β 2 in several contexts, including: (1) preventing FUS toxicity and promoting FUS nuclear localization in yeast; (2) preventing FUS fibril formation *in vitro*; (3) dispersing FUS liquid condensates *in vitro*; and (4) reducing cytoplasmic FUS foci and restoring nuclear localization of FUS in human cells. Our data demonstrate that the N-terminal H1-H7 region of Kap β 2 are not required for significant chaperone functionality. Nonetheless, the N-terminal H1-H7 region enables optimal

disaggregation of FUS fibrils, indicating a functional role in disaggregation. Our findings definitively map the molecular chaperone and nuclear-import activities of Kap β 2 to H8-H20.

Journal Pre-proof

Discussion

Kap β 2 is a NIR that also demonstrates specific chaperone activity against its cargo *in vitro*, in yeast, in human cells, and in fly models (16). The structure and localization of Kap β 2 in cargo-bound and unbound states have been extensively characterized (7,8,12,81,83,86). However, it has remained unclear precisely how the structure of Kap β 2 is directly related to its chaperone activity. Here, we designed truncated variants of Kap β 2 that eliminate its binding to specific epitopes of the FUS PY-NLS to determine which regions of Kap β 2 are most critical for chaperoning cargo and importing cargo into the nucleus.

In a yeast model system where the Kap β 2 cargo protein FUS is toxic (92-94), FL Kap β 2 mitigates FUS toxicity. H8-E, the only Kap β 2 truncation that includes all three PY-NLS epitope-binding regions, can also suppress FUS toxicity in this model. When GFP-tagged FUS is expressed in yeast, it forms abundant cytoplasmic aggregates and is depleted from the nucleus. Expression of FL Kap β 2 resolves these cytoplasmic aggregates and localizes FUS to the nucleus. In line with the results from yeast toxicity assays, H8-E also eliminates cytoplasmic FUS foci and promotes nuclear FUS localization. Indeed, H8-E was the only Kap β 2 truncation variant tested here to phenocopy Kap β 2 in yeast. None of the other Kap β 2 truncation constructs could mitigate FUS aggregation *and* toxicity.

Interestingly, truncations H1-H13 and H9-E, which did not mitigate FUS toxicity in yeast, displayed an intermediate phenotype where cytoplasmic FUS foci were partially dissolved without robust nuclear import. Previous work has established that dissolving cytoplasmic FUS aggregates with potentiated variants of the AAA+ disaggregase Hsp104 without promoting nuclear import can suppress FUS toxicity (94,97,99,103,110). However, the partial decrease in cytoplasmic FUS foci conferred by H1-H13 or H9-E is insufficient to suppress FUS toxicity. Thus, our data suggest that truncated variants of Kap β 2 that contain only a portion of the known PY-NLS-contacting residues have a diminished capability to antagonize cytoplasmic FUS aggregation, restore nuclear localization, and prevent cargo-related toxicity in yeast.

We also assessed the ability of truncated Kap β 2 proteins to directly chaperone FUS at the pure protein level. Kap β 2 potently prevents and reverses FUS fibrillization in this setting (16). H8-E, which counters FUS toxicity and aggregation in yeast as well as FL Kap β 2, also chaperones FUS *in vitro*, although its ability to disaggregate FUS fibrils is mildly impaired compared to that of FL Kap β 2. H1-H13, on the other hand, only chaperones FUS at very high concentrations, and

was unable to completely prevent or reverse FUS fibrillization. H8-H16 can weakly prevent FUS fibrillization, but its chaperone activity is substantially lower than even that of H1-H13.

Surprisingly, although H9-E makes partial contact with the PY-epitope of the PY-NLS of FUS, the protein was inactive *in vitro*. However, the yield from the purification of H8-H16 and H9-E was low compared to H1-H13, H8-E, or Kap β 2, indicating that H8-H16 and H9-E may be less stable, which could affect chaperone activity. Nevertheless, these data indicate that HEAT repeat 8 plays a critical role for *in vitro* chaperone activity, and that the entire FUS-PY-NLS-binding region of Kap β 2 enables chaperone activity. We also assessed the ability of Kap β 2 and truncated variants to dissolve FUS:RNA liquid condensates. Here too, H1-H13 has ~44% FL Kap β 2 activity, whereas FL Kap β 2 and H8-E rapidly dissolve FUS:RNA liquid condensates, significantly reducing their number, total area, and average size.

Why is H8-E, which performs as well as Kap β 2 in all other respects, mildly deficient (i.e. ~2-fold increase in EC₅₀) in disaggregating preformed FUS fibrils? This finding suggests that the N-terminal H1-H7 region contributes toward optimal disaggregation of FUS fibrils. We suggest that H1-H7 may make secondary contacts with the FUS PrLD after Kap β 2 has engaged the FUS PY-NLS, which help break the intermolecular contacts that hold FUS fibrils together (6,16,19). These contacts may be akin to interactions that NIRs make with FG-rich nucleoporins (Nups) during passage across the nuclear-pore complex (111-114). Indeed, the N-terminal HEAT repeats of a related NIR, Kap β 1, make contacts with FG-rich Nups (111). Moreover, a related nuclear-export factor, CRM1, may prevent FG-rich Nup condensation in the cytoplasm (115). Regardless, H8-E can still disaggregate FUS fibrils, albeit less efficiently than FL Kap β 2, indicating that residues beyond H1-H7 can also break contacts between FUS PrLDs that preserve fibril integrity.

A critical element in the structure of Kap β 2 is an extended acidic loop in H8. In the cytoplasm, where Ran is primarily in its GDP-bound state, the H8 loop is disordered and the Kap β 2 cargo-binding surface is available to interact with cargo (1,7,82,86). When Kap β 2 is bound to Ran-GTP in the nucleus, the H8 loop repositions to occupy the internal cargo-binding surface of Kap β 2, displacing the loaded cargo (116). Thus, this extended loop is necessary for cargo unloading in the presence of Ran-GTP (83,116). The extended loop is not, however, required for Kap β 2 disaggregation activity (16). Indeed, Kap β 2 with a truncated acidic loop (Kap β 2^{TL}, in which residues 341-362 are replaced by a 7-residue GGSGGSG linker) still acts as a chaperone *in vitro* to prevent and reverse FUS aggregation, and Kap β 2^{TL} prevents and reverses FUS

recruitment to SGs in cells (16,116). Thus, Kap β 2 chaperone activity can be separated from its role in nuclear import. Nonetheless, Kap β 2^{TL} would have limited ability to restore FUS to the nucleus and mitigate any loss of FUS nuclear function.

We also assessed the activity of Kap β 2 and truncated variants in human cells. Overexpression of GFP-FUS in HeLa cells results in formation of cytoplasmic FUS foci. However, when mCherry-FL-Kap β 2 or -H8-E is co-expressed, GFP-FUS is transported into the nucleus and the proportion of cells with cytoplasmic GFP-FUS foci decreases. Coexpression of H1-H13 or H9-E also reduces the number of cells with cytoplasmic FUS foci, despite displaying reduced chaperone activity *in vitro*. Surprisingly, despite being unable to promote nuclear localization in yeast, H1-H13 and H9-E do promote nuclear localization of FUS in human cells. We therefore suggest that these Kap β 2 truncations may help endogenous Kap β 2 to antagonize formation of cytoplasmic FUS foci, allowing endogenous Kap β 2 to promote FUS nuclear localization.

Our findings establish that the entire FUS-binding region of Kap β 2 is required for effective chaperone and nuclear-import activity. Cargo recognition requires the eighth HEAT repeat, but the residues contained in this region are not sufficient for functionality. The importance of H8 here is consistent with previous work, as H8 contains residues that bind to the PY epitope of the PY-NLS, and this epitope contributes to the tight binding between Kap β 2 and cargo (1,14). However, our work indicates that binding to non-PY-epitopes is also important and supports overall Kap β 2 function. Indeed, Kap β 2 relies on multiple low-affinity interactions to chaperone cargo (12,19,23,117). Moreover, these data agree with genetic studies that have identified mutations in all three PY-NLS epitopes of FUS as causing ALS (14,79,118,119). Similar mutations in the PY-NLS of hnRNPA1 and hnRNPA2 also cause degenerative disease (40,41,120,121). We suggest that Kap β 2 chaperone activity is achieved by making an extensive network of both strong and weak interactions with cargo, displacing cargo: cargo interactions in favor of Kap β 2: cargo interactions. Mutating just two residues in Kap β 2 that engage cargo as in the Kap β 2^{W460A:W730A} variant inactivates Kap β 2. Interestingly, H8-H16 and H9-E, each of which contains both Trp residues that are mutated to Ala in the Kap β 2^{W460A:W730A} mutant, are inactive in yeast despite being well expressed. Thus, the specific interactions mediated by W460 and W730 are important but not sufficient for chaperone activity.

Can truncated Kap β 2 proteins be used to supplement endogenous levels of Kap β 2 function? In models of disease where Kap β 2 cargo proteins aggregate, increasing expression of Kap β 2 can

restore cargo-protein functionality (16). Thus, boosting Kap β 2 activity is an intriguing therapeutic approach (6,25-28,122). Kap β 2 is a large protein, and thus delivering smaller portions of the protein may be a more tractable approach. Recent advances in AAV-mediated delivery of genetic material for exogenous protein production have made the prospect of gene therapy more realistic (123-125). However, AAVs are limited by their DNA-packaging capacity, which restricts the size of the protein they can express. Of the two AAV-based treatments approved by the United States Food and Drug Administration (FDA), the molecular weight of the largest protein to be expressed is ~65 kDa (126,127). Kap β 2 is ~100 kDa, whereas H8-E is ~70 kDa. Thus, it may be that with further technological improvements to AAV-based approaches, H8-E or even FL Kap β 2 could be delivered exogenously to treat diseases where nucleocytoplasmic trafficking of PY-NLS cargo is impaired, including ALS/FTD, MSP, oculopharyngeal muscular dystrophy, hereditary motor neuropathy, and related disorders (39-41,128-131).

Experimental Procedures

Key Resources. Key resources are shown in Table 1.

Table 1. Key Resources.

REAGENT or RESOURCE	SOURCE	IDENTIFIER
Antibodies		
Rabbit polyclonal anti-FUS	Bethyl	Cat# A300-302A; RRID: AB_309445
Mouse monoclonal anti-Flag (M2)	Sigma-Aldrich	Cat# F3165; RRID: AB_259529
Anti-Kap β 2 monoclonal antibody	Novus	Cat# NB600-1397
Rabbit monoclonal anti-alpha Tubulin antibody	Abcam	Cat# ab184970
Rat monoclonal anti-Tubulin antibody	Abcam	Cat# ab6160
Anti-GFP polyclonal antibody	Sigma-Aldrich	Cat# G1544
Anti-mCherry polyclonal antibody	Abcam	Cat# ab167453
Goat anti-rabbit secondary antibody	Li-cor	Cat# 926-68071; RRID: AB_10956166
Goat anti-mouse secondary antibody	Li-cor	Cat# 926-32210; RRID: AB_621842
Goat anti-rat secondary antibody	Li-cor	Cat# 926-32219; RRID: AB_1850025
Bacterial and Virus Strains		
<i>E. coli</i> BL21-CodonPlus(DE3)-RIL	Agilent	Cat# 230245
<i>E. coli</i> XL 10-Gold cells	Agilent	Cat# 200314
One Shot TOP10 Chemically Competent <i>E. coli</i>	Invitrogen	Cat# C404010
Chemicals, Peptides, and Recombinant Proteins		
PfuUltra II Fusion HS DNA Polymerase	Agilent	Cat# 600672
DpnI	NEB	Cat# R0176S
Gateway BP Clonase II Enzyme Mix	Invitrogen	Cat# 11789013
Gateway BP Clonase II Enzyme Mix	Invitrogen	Cat# 11791019

NEBuilder® HiFi DNA Assembly Master Mix	NEB	Cat# E2621S
Ni-NTA agarose	QIAGEN	Cat# 30230
Glutathione Sepharose® 4 Fast Flow	GE Healthcare	Cat# GE17-5132-01
cOmplete™, EDTA-free Protease Inhibitor Cocktail	Roche	Cat# 11873580001
Hoechst 33342 stain	Invitrogen	Cat# H3570
Lipofectamine™ 2000 Transfection Reagent	Invitrogen	Cat# 11668027
VECTASHIELD® Antifade Mounting Medium with DAPI	Vector Laboratories	Cat# H-1200-10
DMEM, high glucose, pyruvate	Gibco	Cat# 11995065
Fetal Bovine Serum	Cytiva	Cat# SH30910.03
Penicillin-Streptomycin	Gibco	Cat# 15140122
HisTrap™ Fast Flow Crude	Cytiva	Cat# 17528601
Novex AcTEV Protease	Fisher Scientific	Cat# 12-575-015
Cy3 NHS Ester	Cytiva	Cat# PA13101
Critical Commercial Assays		
QuikChange Site-Directed Mutagenesis Kit	Agilent	Cat# 210518
Experimental Models: Organisms/Strains		
<i>S. cerevisiae</i> : W303aΔhsp104 (MATa, can1-100, his3-11, 15, leu2-3, 112, trp1-1, ura3-1, ade2-1, hsp104::KanMX)	Ref. (132)	A3224
<i>S. cerevisiae</i> : W303aΔhsp104-pAG303GAL-FUS	Ref. (94)	N/A
<i>S. cerevisiae</i> : W303aΔhsp104-pAG303GAL-FUS-GFP	Ref. (94)	N/A
Experimental Models: Cell Lines		
Human: HeLa	ATCC	Cat# CCL-2; RRID:CVCL_0030
Recombinant DNA/RNA		
GST-TEV-FUS ^{WT}	Ref. (93)	N/A

GST-TEV-Kap β 2	Ref. (16)	N/A
His-SUMO-Kap β 2 (full length and truncations)	This paper	N/A
pAG416Gal-Kap β 2 (FL and truncations)	This paper	N/A
mCherry2-C1	N/A	Addgene Cat# 54563
mCherry2-N1	N/A	Addgene Cat# 54517
pEGFP-C1-FLAG	Ref. (133)	GenBank U55763.1
mCherry2-Kap β 2 (FL and truncations)	This paper	N/A
pEGFP-FUS ^{WT}	This paper	N/A
pTHMT/FUS _{WT}	Ref. (20)	N/A
U ₄₀ RNA: 5'- rUrUrU rUrUrU rUrUrU rUrUrU rUrUrU rUrUrU rUrUrU rUrUrU rUrUrU rUrUrU rU/3AmMO/ -3'	IDT	N/A
Software and Algorithms		
ImageJ	Ref. (134)	https://imagej.nih.gov/ij/
GraphPad Prism	GraphPad	Version 9.1.1
MATLAB	Mathworks	
NIS-Elements Ar Package	Nikon	

Plasmids. Kap β 2 truncations were cloned in the following manner: H1-H4, H1-H10, and H1-H13 were created by inserting stop codons into a GST-TEV-Kap β 2 plasmid using the following primers with their respective reverse complements:

5'-GACAGTGATGTTTTAGATCGTTAGTAGAACATCATG-3';

5'-CAGCCGCCAGACACGTAGTAGAAGCCATTAATG-3'; and

5'-GGATTCCTTCCGTGATGAGAACCTGTGTATCAG-3'. H8-E, H9-E and H12-E were cloned into a GST-TEV-Kap β 2 plasmid (1,16) using the following primers with their respective reverse complements:

5'-CAGGGCGGATCCAAGGCTTTAGAAGCCTGTGAATTTTGG-3';

5'-CAGGGCGGATCCAAGGCTGCTGCCCTGGATGTTCTT-3'; and

5'-CAGGGCGGATCCAAGTACCTTGCTTATATACTTGATACCCTG-3'. Truncated constructs were then shuttled into a Gateway entry vector, pDONR221-ccdB, using Gateway BP reactions (Invitrogen). H8-H16 was generated at this point using the following primer to introduce a stop codon at the end of H16:

3'-GGGGACCACTTTGTACAAGAAAGCTGGGTCCTAAGGCTGCATCTCTATAACCCATTTG-5'. The entry clones were then used to shuttle Kap β 2 truncations into pAG416GAL-ccdB via Gateway LR reactions for yeast expression. FLAG-tagged constructs were created by using primers to add the following sequence upstream of the stop codon for each open-reading frame (ORF): 5'-GACTACAAAGACGATGACGACAAG-3'.

To create plasmids for expression in mammalian cells, FUS and Kap β 2 were cloned into pEGFP-C1 and mCherry2-C1 (Addgene, #54563), respectively. The FUS ORFs were amplified with the following overhang sequences: 5'-GGACGAGCTGTACAAG-3'; 3'-GTAATCAGATCTGAGTCCGG-5'. Kap β 2 ORFs were amplified with the following overhang sequences: 5'-GGACGAGCTGTACAAGTCT-3'; 3'-CTCGAGATCTGAGTCCGG-5'. For both ORFs, the vector backbone was cut with BspEI and the linearized backbone and amplified inserts were purified using QIAquick Gel Extraction Kit (Qiagen) and assembled using Gibson cloning (NEB).

To create plasmids for recombinant expression of Kap β 2 plasmids, Kap β 2 ORFs were cloned into a pE-SUMOpro Amp vector (LifeSensors) using the following strategy: first, the empty pE-SUMOpro Amp vector was cut using BsaI enzyme (NEB). ORFs were amplified with primers that added 5'-CGCGAACAGATTGGAGGT-3' upstream of the start of the ORF, and added 5'-CTAGAGGATCCGAATTC-3' downstream of the end of the ORF. The cut vector and amplified ORFs were purified using a QIAquick Gel Extraction Kit (Qiagen), and assembled using Gibson cloning (NEB).

All constructs were confirmed by DNA sequencing.

Yeast Strains and Media. Yeast were the isogenic strain W303a Δ *hsp104* (94). The yeast strain W303a Δ *hsp104*-pAG303GAL-FUS^{WT} and W303a Δ *hsp104*-pAG303GAL-FUS^{WT}-GFP have been described previously (94,97). Media was supplemented with 2% glucose, raffinose, or galactose as specified.

Yeast Transformation and Spotting Assays. Yeast transformations were performed using standard polyethylene glycol and lithium acetate procedures (135). For the spotting assays, yeast were grown to saturation in raffinose-supplemented dropout media overnight at 30 °C. The saturated overnight cultures were normalized to an OD₆₀₀ of 2.0 ($A_{600nm} = 2.0$) and serially

diluted three-fold. A 96-bolt replicator tool (frogger) was used to spot the strains in duplicate onto both glucose and galactose dropout plates. These plates were grown at 30 °C and imaged after 72 h to assess suppression of FUS toxicity. Each spotting assay shown is representative of at least three biological replicates.

Western Blots. For yeast cells, transformed Kap β 2 variants and controls were grown overnight in raffinose media. The overnight cultures were diluted to an OD₆₀₀ of 0.3 ($A_{600nm} = 0.3$) and grown in galactose-supplemented media at 30 °C for 5 h. Samples were then normalized to an OD₆₀₀ of 0.6 ($A_{600nm} = 0.6$) and centrifuged at 4000 x g for 5 min. The pelleted cells were resuspended in 0.1 M NaOH for 5 min and then pelleted again and resuspended in 1x SDS sample buffer. For HeLa cells, $\sim 2\text{-}2.5 \times 10^5$ cells were seeded and transfected with GFP-tagged FUS and either mCherry-tagged Kap β 2 variants or an empty vector expressing mCherry. After 24 h, cells were washed once with PBS, then resuspended in RIPA lysis buffer (150 mM NaCl, 1% Triton X-100, 1% sodium deoxycholate, 0.1% SDS, 25 mM Tris-HCl pH 7.6) supplemented with protease inhibitors and 1 mM PMSF. Cells were then sonicated and centrifuged at 4 °C for 10 minutes at 10,000 x g, and the cell lysate was mixed with 1x SDS sample buffer.

The samples were then boiled and separated by SDS-PAGE (4–20% gradient, Bio-Rad) and transferred to a PVDF membrane. The following primary antibodies were used: anti-FUS polyclonal (Bethyl Laboratories), anti-Kap β 2 monoclonal (Novus), anti-alpha Tubulin monoclonal (Abcam: ab184970 for yeast; ab6160 for human cells), anti-FLAG monoclonal (Sigma-Aldrich), anti-GFP polyclonal (Sigma-Aldrich), anti-mCherry polyclonal (Abcam). Three fluorescently labeled secondary antibodies were used: anti-rabbit (Li-Cor), anti-rat (Li-Cor), and anti-mouse (Li-Cor). Blots were imaged using a LI-COR Odyssey FC Imaging system.

HeLa Cell Culture and Transfections. HeLa cells were maintained in Dulbecco's modified Eagle's medium, high glucose (Gibco) containing 10% fetal bovine serum (HyClone) and 1% penicillin-streptomycin (Gibco). Cells were plated in 6-well plates at a density of $2\text{-}2.5 \times 10^5$ cells/plate 24 h before transfection. Cells were transfected with 1 μ g total DNA and 3 μ L Lipofectamine 2000 (Invitrogen). Media was changed 4 h post-transfection to standard maintenance media and cells were harvested for microscopy or western blot 24 h post-transfection.

Fluorescence Microscopy. For yeast microscopy, W303a Δ hsp104-pAG303GAL-FUS^{WT}-GFP yeast were transformed with the indicated Kap β 2 variant or vector control. Microscopy samples were grown and induced as they were for immunoblotting. Prior to imaging, cells were treated with Hoechst 33342 stain (0.1 mg/mL). All cells were imaged at 100x magnification using a Leica-DMIRBE microscope or the EVOS M5000 Imaging System. Analysis of cells was performed in ImageJ (136). For each sample, at least 100 cells were quantified in at least three independent trials.

For HeLa cell microscopy, transfected HeLa cells were fixed with 2% formaldehyde for 30 min at RT, followed by treatment with Triton X-100 for 6 min to permeabilize cells. Coverslips were then assembled using VECTASHIELD[®] Antifade Mounting Medium with DAPI (Vector Laboratories) and sealed before imaging. Images were taken at 100x magnification using the EVOS M5000 Imaging System (ThermoFisher) and processed using ImageJ (136). At least 100 cells were counted for each condition across three independent trials.

Protein Purification. All proteins were expressed and purified from *E. coli* BL21-CodonPlus(DE3)-RIL cells (Agilent) and purified under native conditions. GST-TEV-FUS^{WT} was purified as described (93). Briefly, *E. coli* cells were lysed by sonication on ice in PBS pH 7.4 with protease inhibitors (cOmplete, EDTA-free, Roche Applied Science). The protein was purified over Glutathione Sepharose 4 Fast Flow (GE Healthcare) and eluted from the beads using 50 mM Tris-HCl pH 8, 20 mM trehalose, and 20 mM glutathione. 6xHis-MBP-FUS was purified as described (20). Briefly, *E. coli* cells were lysed by sonication in lysis buffer (1 M KCl, 1 M Urea, 50 mM Tris-HCl pH 7.4, 10 mM imidazole, 1.5 mM β -mercaptoethanol, 1% NP-40, 5% glycerol, supplemented with protease inhibitors). The protein was purified over a HisTrap HP column (GE), using an AKTA pure 25M FPLC system (GE), and was eluted using an imidazole gradient into elution buffer (1M KCl, 1 M Urea, 50 mM Tris-HCl pH 7.4, 1.5 mM β -mercaptoethanol, 5% glycerol, 500 mM imidazole), and the appropriate fractions were pooled and stored in 30% glycerol at 4 °C.

To purify full-length and truncated Kap β 2 proteins, *E. coli* cells transformed with the appropriate plasmid were grown at 37 °C in LB supplemented with 2% glucose. Once cells reached an OD₆₀₀ of ~0.6, expression was induced overnight at 15 °C with 0.2-1.0 mM isopropyl β -D-thiogalactopyranoside (IPTG). Cells were pelleted and resuspended in binding buffer (50 mM Tris-HCl, pH 7.5, 100 mM NaCl, 20% glycerol, 10 mM imidazole, 2.5 mM β -mercaptoethanol,

supplemented with protease inhibitors), then lysed by sonication. Cell lysate was separated by spinning at 16,000 rpm at 4 °C for 20 min. Cell lysate was then loaded onto Ni-NTA resin (Qiagen) and washed with binding buffer. Protein was eluted with elution buffer (50 mM Tris-HCl, pH 7.5, 100 mM NaCl, 20% glycerol, 200 mM imidazole, 2.5 mM β -mercaptoethanol) and buffer exchanged into a low imidazole buffer (20 mM imidazole pH 6.5, 75 mM NaCl, 2.5 mM β -mercaptoethanol, 20% glycerol). Protein was then cleaved at 30 °C overnight with Ulp1 at a 1:250 molar ratio in an Eppendorf ThermoMixer shaking at 300 rpm. Cleaved protein product was then bound to fresh Ni-NTA resin, and flow-through was collected and further purified on a HiTrap Q HP column (GE) using buffer A (20 mM imidazole pH 6.5, 75 mM NaCl, 1 mM EDTA, 2 mM DTT, 20% glycerol) and buffer B (20 mM imidazole pH 6.5, 1 M NaCl, 1 mM EDTA, 2 mM DTT, 20% glycerol). Protein fractions were then concentrated, snap-frozen in liquid nitrogen, and stored at -80 °C.

FUS Aggregation Assays. Spontaneous FUS fibrillization (i.e., in the absence of preformed fibril seeds) was initiated as described previously (16). Briefly, 1 μ g TEV protease was added to GST-TEV-FUS (3 μ M) in FUS assembly buffer (50 mM Tris-HCl, pH 8, 200 mM trehalose, 1 mM DTT, and 20mM glutathione) (37,38,93). Spontaneous FUS fibrillization reactions were incubated at 25 °C with or without the indicated concentration of each Kap β 2 variant, and turbidity was used to assess fibrillization by measuring absorbance at 395nm. The absorbance was normalized to that of FUS plus buffer control to determine the relative extent of aggregation. Disaggregation assays were performed similarly, where FUS aggregation was initiated with TEV in the absence of Kap β 2. After 60 minutes of aggregation, equal volumes were added to each condition containing the appropriate ratios of buffer and Kap β 2 to reach the indicated final concentration.

To analyze data, the reading from the first timepoint was subtracted from every subsequent reading. Then, for each aggregation experiment, the maximum absorbance value for FUS alone was set as 100, and all other values were normalized to that standard by dividing the raw, background-subtracted value by the maximum value for FUS alone and multiplying by 100. For disaggregation experiments, the background-subtracted reading from the time point immediately before Kap β 2 addition was set to 100 for each condition, and subsequent readings were normalized to their own initial standard. For aggregation assays, the area under the curve (AUC) for the first 90 minutes of aggregation was used to calculate the IC₅₀ by dividing the AUC for each condition by the AUC for FUS alone and multiplying by 100 to calculate a normalized

percent aggregation. The same data treatment was used for disaggregation assays, where the AUC for the first 40 minutes after addition of Kap β 2 or buffer was used to calculate the EC₅₀. AUC, IC₅₀, and EC₅₀ were calculated using GraphPad Prism by fitting data to a non-linear regression using a normalized response and a variable slope.

Droplet Assays. U₄₀ RNA was labeled as described previously (20). Briefly, unlabeled amine-modified RNA was combined with 0.1 mg Cy3-NHS in 100 mM sodium bicarbonate for overnight labeling. The RNA was precipitated with ethanol twice and stored at -20 °C as 100 μ M long-term and 1 μ M working stocks.

Droplet reactions were performed essentially as described previously with a few modifications (20). Purified 6xHis-MBP-FUS was buffer-exchanged by concentrating FUS in Amicon filters (Millipore Sigma) and diluting with 20 mM Na₂HPO₄ pH 8.0. FUS (1 μ M) was combined with unlabeled U40 RNA (1 μ M) and Cy3-U40 (10 nM) in 1X Cleavage Buffer (100 mM NaCl, 50 mM Tris pH 7.4., 1 mM DTT, and 1 mM EDTA pH 8.0.). The phase separation reaction was initiated by adding 5 U Novex AcTEV protease, which cleaved the MBP and His tags from the FUS protein. Reactions (200 μ L) were incubated for 4 h in 8-well Nunc Lab-Tek chambers (Thermo Scientific #155361). Brightfield and Cy3 fluorescence images were captured on a Nikon Ti Eclipse wide-field microscope. Purified Kap β 2 protein was prepared as a 10X concentrate (2.5-10 μ M) in 1X Cleavage Buffer and diluted to 1X Kap β 2 (250-1000 nM) in the phase separation reactions immediately after the 4-h timepoint.

Droplet area and number were quantified with a MATLAB script that used intensity thresholding to identify droplet ROIs (21). We defined the area density as the sum of the area of all droplet ROIs divided by the total imaging area, which estimates the fraction of surface area covered by droplets. Therefore, the area density is unitless. The number of droplet ROIs and the area density of each image were determined for each replicate, which were then used to calculate the droplet statistics before and after Kap β 2 addition.

Data availability

All data are contained within the manuscript.

Supporting information

This article contains supporting information (supplementary figures 1-4).

Acknowledgments

We thank Katie Copley, Miriam Linsenmeier, JiaBei Lin, Zarin Tabassum, and Hana Odeh for feedback on the manuscript and Oliver King for advice on statistics.

Funding and additional information

C.M.F. is supported by NIH grants T32GM008275 and F31NS111870. K.R. is supported by NIH grants F31NS113439 and T32GM007231. S.M. is funded by the NIH grants RF1AG071326 and RF1NS113636 and the NSF grant PHY-1430124 via the Center of Physics of Living Cells. J.S. is supported by grants from Target ALS, the ALS Association, the Office of the Assistant Secretary of Defense for Health Affairs through the Amyotrophic Lateral Sclerosis Research Program (W81XWH-20-1-0242), the G. Harold & Leila Y. Mathers Foundation, Sanofi, and NIH grants R01GM099836, R21AG061784, and R21AG065854.

Author Contributions

C.M.F., K.R., A.L., S.M. and J.S. designed experiments. C.M.F. and A.L. performed cloning and yeast experiments, and C.M.F. performed human cell and *in vitro* purification and aggregation experiments. K.R. performed *in vitro* MBP-FUS purification and FUS:RNA droplet experiments. C.M.F. and J.S. wrote the paper.

Declarations of interests

C.M.F., K.R., A.L., and S.M. have no interests to declare. J.S. is a consultant for Dewpoint Therapeutics, ADRx, Neumora, and Confluence Therapeutics.

References

1. Lee, B. J., Cansizoglu, A. E., Suel, K. E., Louis, T. H., Zhang, Z., and Chook, Y. M. (2006) Rules for nuclear localization sequence recognition by karyopherin beta 2. *Cell* **126**, 543-558
2. Soniat, M., and Chook, Y. M. (2015) Nuclear localization signals for four distinct karyopherin-beta nuclear import systems. *Biochem J* **468**, 353-362
3. Wing, C. E., Fung, H. Y. J., and Chook, Y. M. (2022) Karyopherin-mediated nucleocytoplasmic transport. *Nat Rev Mol Cell Biol* **23**, 307-328
4. Xu, D., Farmer, A., and Chook, Y. M. (2010) Recognition of nuclear targeting signals by Karyopherin-beta proteins. *Curr Opin Struct Biol* **20**, 782-790
5. Gorlich, D., Pante, N., Kutay, U., Aebi, U., and Bischoff, F. R. (1996) Identification of different roles for RanGDP and RanGTP in nuclear protein import. *EMBO J* **15**, 5584-5594
6. Guo, L., Fare, C. M., and Shorter, J. (2019) Therapeutic Dissolution of Aberrant Phases by Nuclear-Import Receptors. *Trends Cell Biol* **29**, 308-322
7. Chook, Y. M., and Blobel, G. (1999) Structure of the nuclear transport complex karyopherin-beta2-Ran x GppNHp. *Nature* **399**, 230-237
8. Nakielny, S., and Dreyfuss, G. (1998) Import and export of the nuclear protein import receptor transportin by a mechanism independent of GTP hydrolysis. *Curr Biol* **8**, 89-95
9. Nakielny, S., Siomi, M. C., Siomi, H., Michael, W. M., Pollard, V., and Dreyfuss, G. (1996) Transportin: nuclear transport receptor of a novel nuclear protein import pathway. *Exp Cell Res* **229**, 261-266
10. Siomi, M. C., Eder, P. S., Kataoka, N., Wan, L., Liu, Q., and Dreyfuss, G. (1997) Transportin-mediated nuclear import of heterogeneous nuclear RNP proteins. *J Cell Biol* **138**, 1181-1192
11. Pollard, V. W., Michael, W. M., Nakielny, S., Siomi, M. C., Wang, F., and Dreyfuss, G. (1996) A novel receptor-mediated nuclear protein import pathway. *Cell* **86**, 985-994
12. Soniat, M., and Chook, Y. M. (2016) Karyopherin- β 2 Recognition of a PY-NLS Variant that Lacks the Proline-Tyrosine Motif. *Structure* **24**, 1802-1809
13. Suel, K. E., Gu, H., and Chook, Y. M. (2008) Modular organization and combinatorial energetics of proline-tyrosine nuclear localization signals. *PLoS Biol* **6**, e137
14. Zhang, Z. C., and Chook, Y. M. (2012) Structural and energetic basis of ALS-causing mutations in the atypical proline-tyrosine nuclear localization signal of the Fused in Sarcoma protein (FUS). *Proc Natl Acad Sci U S A* **109**, 12017-12021
15. Bonifaci, N., Moroianu, J., Radu, A., and Blobel, G. (1997) Karyopherin beta2 mediates nuclear import of a mRNA binding protein. *Proc Natl Acad Sci U S A* **94**, 5055-5060

16. Guo, L., Kim, H. J., Wang, H., Monaghan, J., Freyermuth, F., Sung, J. C., O'Donovan, K., Fare, C. M., Diaz, Z., Singh, N., Zhang, Z. C., Coughlin, M., Sweeny, E. A., DeSantis, M. E., Jackrel, M. E., Rodell, C. B., Burdick, J. A., King, O. D., Gitler, A. D., Lagier-Tourenne, C., Pandey, U. B., Chook, Y. M., Taylor, J. P., and Shorter, J. (2018) Nuclear-Import Receptors Reverse Aberrant Phase Transitions of RNA-Binding Proteins with Prion-like Domains. *Cell* **173**, 677-692 e620
17. Hofweber, M., Hutten, S., Bourgeois, B., Spreitzer, E., Niedner-Boblenz, A., Schifferer, M., Ruepp, M. D., Simons, M., Niessing, D., Madl, T., and Dormann, D. (2018) Phase Separation of FUS Is Suppressed by Its Nuclear Import Receptor and Arginine Methylation. *Cell* **173**, 706-719 e713
18. Qamar, S., Wang, G., Randle, S. J., Ruggeri, F. S., Varela, J. A., Lin, J. Q., Phillips, E. C., Miyashita, A., Williams, D., Strohl, F., Meadows, W., Ferry, R., Dardov, V. J., Tartaglia, G. G., Farrer, L. A., Kaminski Schierle, G. S., Kaminski, C. F., Holt, C. E., Fraser, P. E., Schmitt-Ulms, G., Klenerman, D., Knowles, T., Vendruscolo, M., and St George-Hyslop, P. (2018) FUS Phase Separation Is Modulated by a Molecular Chaperone and Methylation of Arginine Cation- π Interactions. *Cell* **173**, 720-734 e715
19. Yoshizawa, T., Ali, R., Jiou, J., Fung, H. Y. J., Burke, K. A., Kim, S. J., Lin, Y., Peeples, W. B., Saltzberg, D., Soniat, M., Baumhardt, J. M., Oldenbourg, R., Sali, A., Fawzi, N. L., Rosen, M. K., and Chook, Y. M. (2018) Nuclear Import Receptor Inhibits Phase Separation of FUS through Binding to Multiple Sites. *Cell* **173**, 693-705 e622
20. Niaki, A. G., Sarkar, J., Cai, X., Rhine, K., Vidaurre, V., Guy, B., Hurst, M., Lee, J. C., Koh, H. R., Guo, L., Fare, C. M., Shorter, J., and Myong, S. (2020) Loss of Dynamic RNA Interaction and Aberrant Phase Separation Induced by Two Distinct Types of ALS/FTD-Linked FUS Mutations. *Mol Cell* **77**, 82-94 e84
21. Rhine, K., Dasovich, M., Yoniles, J., Badiie, M., Skanchy, S., Ganser, L. R., Ge, Y., Fare, C. M., Shorter, J., Leung, A. K. L., and Myong, S. (2022) Poly(ADP-ribose) drives condensation of FUS via a transient interaction. *Mol Cell* **82**, 969-985 e911
22. Baade, I., Hutten, S., Sternburg, E. L., Porschke, M., Hofweber, M., Dormann, D., and Kehlenbach, R. H. (2021) The RNA-binding protein FUS is chaperoned and imported into the nucleus by a network of import receptors. *J Biol Chem* **296**, 100659
23. Gonzalez, A., Mannen, T., Cagatay, T., Fujiwara, A., Matsumura, H., Niesman, A. B., Brautigam, C. A., Chook, Y. M., and Yoshizawa, T. (2021) Mechanism of karyopherin-beta2 binding and nuclear import of ALS variants FUS(P525L) and FUS(R495X). *Sci Rep* **11**, 3754
24. Rhine, K., Makurath, M. A., Liu, J., Skanchy, S., Lopez, C., Catalan, K. F., Ma, Y., Fare, C. M., Shorter, J., Ha, T., Chemla, Y. R., and Myong, S. (2020) ALS/FTLD-Linked Mutations in FUS Glycine Residues Cause Accelerated Gelation and Reduced Interactions with Wild-Type FUS. *Mol Cell* **80**, 666-681 e668
25. Darling, A. L., and Shorter, J. (2021) Combating deleterious phase transitions in neurodegenerative disease. *Biochim Biophys Acta Mol Cell Res* **1868**, 118984

26. Fare, C. M., and Shorter, J. (2021) (Dis)Solving the problem of aberrant protein states. *Dis Model Mech* **14**
27. Odeh, H. M., Fare, C. M., and Shorter, J. (2022) Nuclear-Import Receptors Counter Deleterious Phase Transitions in Neurodegenerative Disease. *J Mol Biol* **434**, 167220
28. Portz, B., Lee, B. L., and Shorter, J. (2021) FUS and TDP-43 Phases in Health and Disease. *Trends Biochem Sci* **46**, 550-563
29. Fridell, R. A., Truant, R., Thorne, L., Benson, R. E., and Cullen, B. R. (1997) Nuclear import of hnRNP A1 is mediated by a novel cellular cofactor related to karyopherin-beta. *J Cell Sci* **110 (Pt 11)**, 1325-1331
30. King, O. D., Gitler, A. D., and Shorter, J. (2012) The tip of the iceberg: RNA-binding proteins with prion-like domains in neurodegenerative disease. *Brain Res* **1462**, 61-80
31. Li, Y. R., King, O. D., Shorter, J., and Gitler, A. D. (2013) Stress granules as crucibles of ALS pathogenesis. *J Cell Biol* **201**, 361-372
32. Cushman, M., Johnson, B. S., King, O. D., Gitler, A. D., and Shorter, J. (2010) Prion-like disorders: blurring the divide between transmissibility and infectivity. *J Cell Sci* **123**, 1191-1201
33. Gitler, A. D., and Shorter, J. (2011) RNA-binding proteins with prion-like domains in ALS and FTL-D. *Prion* **5**, 179-187
34. March, Z. M., King, O. D., and Shorter, J. (2016) Prion-like domains as epigenetic regulators, scaffolds for subcellular organization, and drivers of neurodegenerative disease. *Brain Res* **1647**, 9-18
35. Harrison, A. F., and Shorter, J. (2017) RNA-binding proteins with prion-like domains in health and disease. *Biochem J* **474**, 1417-1438
36. Kapeli, K., Martinez, F. J., and Yeo, G. W. (2017) Genetic mutations in RNA-binding proteins and their roles in ALS. *Hum Genet* **136**, 1193-1214
37. Couthouis, J., Hart, M. P., Erion, R., King, O. D., Diaz, Z., Nakaya, T., Ibrahim, F., Kim, H. J., Mojsilovic-Petrovic, J., Panossian, S., Kim, C. E., Frackelton, E. C., Solski, J. A., Williams, K. L., Clay-Falcone, D., Elman, L., McCluskey, L., Greene, R., Hakonarson, H., Kalb, R. G., Lee, V. M., Trojanowski, J. Q., Nicholson, G. A., Blair, I. P., Bonini, N. M., Van Deerlin, V. M., Mourelatos, Z., Shorter, J., and Gitler, A. D. (2012) Evaluating the role of the FUS/TLS-related gene EWSR1 in amyotrophic lateral sclerosis. *Hum Mol Genet* **21**, 2899-2911
38. Couthouis, J., Hart, M. P., Shorter, J., DeJesus-Hernandez, M., Erion, R., Oristano, R., Liu, A. X., Ramos, D., Jethava, N., Hosangadi, D., Epstein, J., Chiang, A., Diaz, Z., Nakaya, T., Ibrahim, F., Kim, H. J., Solski, J. A., Williams, K. L., Mojsilovic-Petrovic, J., Ingre, C., Boylan, K., Graff-Radford, N. R., Dickson, D. W., Clay-Falcone, D., Elman, L., McCluskey, L., Greene, R., Kalb, R. G., Lee, V. M., Trojanowski, J. Q., Ludolph, A., Robberecht, W., Andersen, P. M., Nicholson, G. A., Blair, I. P., King, O. D., Bonini, N. M., Van Deerlin, V., Rademakers, R., Mourelatos, Z., and Gitler, A. D. (2011) A yeast

- functional screen predicts new candidate ALS disease genes. *Proc Natl Acad Sci U S A* **108**, 20881-20890
39. Kim, H. J., Kim, N. C., Wang, Y. D., Scarborough, E. A., Moore, J., Diaz, Z., MacLea, K. S., Freibaum, B., Li, S., Molliex, A., Kanagaraj, A. P., Carter, R., Boylan, K. B., Wojtas, A. M., Rademakers, R., Pinkus, J. L., Greenberg, S. A., Trojanowski, J. Q., Traynor, B. J., Smith, B. N., Topp, S., Gkazi, A. S., Miller, J., Shaw, C. E., Kottlors, M., Kirschner, J., Pestronk, A., Li, Y. R., Ford, A. F., Gitler, A. D., Benatar, M., King, O. D., Kimonis, V. E., Ross, E. D., Weihl, C. C., Shorter, J., and Taylor, J. P. (2013) Mutations in prion-like domains in hnRNPA2B1 and hnRNPA1 cause multisystem proteinopathy and ALS. *Nature* **495**, 467-473
 40. Beijer, D., Kim, H. J., Guo, L., O'Donovan, K., Mademan, I., Deconinck, T., Van Schil, K., Fare, C. M., Drake, L. E., Ford, A. F., Kochanski, A., Kabzinska, D., Dubuisson, N., Van den Bergh, P., Voermans, N. C., Lemmers, R. J., van der Maarel, S. M., Bonner, D., Sampson, J. B., Wheeler, M. T., Mehrabyan, A., Palmer, S., De Jonghe, P., Shorter, J., Taylor, J. P., and Baets, J. (2021) Characterization of HNRNPA1 mutations defines diversity in pathogenic mechanisms and clinical presentation. *JCI Insight* **6**
 41. Kim, H. J., Mohassel, P., Donkervoort, S., Guo, L., O'Donovan, K., Coughlin, M., Lornage, X., Foulds, N., Hammans, S. R., Foley, A. R., Fare, C. M., Ford, A. F., Ogasawara, M., Sato, A., Iida, A., Munot, P., Ambegaonkar, G., Phadke, R., O'Donovan, D. G., Buchert, R., Grimm, M., Topf, A., Zaharieva, I. T., Brady, L., Hu, Y., Lloyd, T. E., Klein, A., Steinlin, M., Kuster, A., Mercier, S., Marcorelles, P., Pereon, Y., Fleurence, E., Manzur, A., Ennis, S., Upstill-Goddard, R., Bello, L., Bertolin, C., Pegoraro, E., Salviati, L., French, C. E., Shatillo, A., Raymond, F. L., Haack, T. B., Quijano-Roy, S., Bohm, J., Nelson, I., Stojkovic, T., Evangelista, T., Straub, V., Romero, N. B., Laporte, J., Muntoni, F., Nishino, I., Tarnopolsky, M. A., Shorter, J., Bonnemann, C. G., and Taylor, J. P. (2022) Heterozygous frameshift variants in HNRNPA2B1 cause early-onset oculopharyngeal muscular dystrophy. *Nat Commun* **13**, 2306
 42. Couthouis, J., Raphael, A. R., Daneshjou, R., and Gitler, A. D. (2014) Targeted exon capture and sequencing in sporadic amyotrophic lateral sclerosis. *PLoS Genet* **10**, e1004704
 43. Blokhuis, A. M., Groen, E. J., Koppers, M., van den Berg, L. H., and Pasterkamp, R. J. (2013) Protein aggregation in amyotrophic lateral sclerosis. *Acta Neuropathol* **125**, 777-794
 44. Ito, D., Hatano, M., and Suzuki, N. (2017) RNA binding proteins and the pathological cascade in ALS/FTD neurodegeneration. *Sci Transl Med* **9**
 45. Mackenzie, I. R., Rademakers, R., and Neumann, M. (2010) TDP-43 and FUS in amyotrophic lateral sclerosis and frontotemporal dementia. *Lancet Neurol* **9**, 995-1007
 46. Neumann, M., Rademakers, R., Roeber, S., Baker, M., Kretschmar, H. A., and Mackenzie, I. R. (2009) A new subtype of frontotemporal lobar degeneration with FUS pathology. *Brain* **132**, 2922-2931
 47. Tyzack, G. E., Luisier, R., Taha, D. M., Neeves, J., Modic, M., Mitchell, J. S., Meyer, I., Greensmith, L., Newcombe, J., Ule, J., Luscombe, N. M., and Patani, R. (2019)

- Widespread FUS mislocalization is a molecular hallmark of amyotrophic lateral sclerosis. *Brain* **142**, 2572-2580
48. Vance, C., Scotter, E. L., Nishimura, A. L., Troakes, C., Mitchell, J. C., Kathe, C., Urwin, H., Manser, C., Miller, C. C., Hortobagyi, T., Dragunow, M., Rogelj, B., and Shaw, C. E. (2013) ALS mutant FUS disrupts nuclear localization and sequesters wild-type FUS within cytoplasmic stress granules. *Hum Mol Genet* **22**, 2676-2688
 49. Kwiatkowski, T. J., Jr., Bosco, D. A., Leclerc, A. L., Tamrazian, E., Vanderburg, C. R., Russ, C., Davis, A., Gilchrist, J., Kasarskis, E. J., Munsat, T., Valdmanis, P., Rouleau, G. A., Hosler, B. A., Cortelli, P., de Jong, P. J., Yoshinaga, Y., Haines, J. L., Pericak-Vance, M. A., Yan, J., Ticozzi, N., Siddique, T., McKenna-Yasek, D., Sapp, P. C., Horvitz, H. R., Landers, J. E., and Brown, R. H., Jr. (2009) Mutations in the FUS/TLS gene on chromosome 16 cause familial amyotrophic lateral sclerosis. *Science* **323**, 1205-1208
 50. Hoell, J. I., Larsson, E., Runge, S., Nusbaum, J. D., Duggimpudi, S., Farazi, T. A., Hafner, M., Borkhardt, A., Sander, C., and Tuschl, T. (2011) RNA targets of wild-type and mutant FET family proteins. *Nat Struct Mol Biol* **18**, 1428-1431
 51. Humphrey, J., Birsa, N., Milioto, C., McLaughlin, M., Ule, A. M., Robaldo, D., Eberle, A. B., Krauchi, R., Bentham, M., Brown, A. L., Jarvis, S., Bodo, C., Garone, M. G., Devoy, A., Soraru, G., Rosa, A., Bozzoni, I., Fisher, E. M. C., Muhlemann, O., Schiavo, G., Ruepp, M. D., Isaacs, A. M., Plagnol, V., and Fratta, P. (2020) FUS ALS-causative mutations impair FUS autoregulation and splicing factor networks through intron retention. *Nucleic Acids Res* **48**, 6889-6905
 52. Kamelgarn, M., Chen, J., Kuang, L., Jin, H., Kasarskis, E. J., and Zhu, H. (2018) ALS mutations of FUS suppress protein translation and disrupt the regulation of nonsense-mediated decay. *Proc Natl Acad Sci U S A* **115**, E11904-E11913
 53. Korobeynikov, V. A., Lyashchenko, A. K., Blanco-Redondo, B., Jafar-Nejad, P., and Shneider, N. A. (2022) Antisense oligonucleotide silencing of FUS expression as a therapeutic approach in amyotrophic lateral sclerosis. *Nat Med* **28**, 104-116
 54. Murakami, T., Qamar, S., Lin, J. Q., Schierle, G. S., Rees, E., Miyashita, A., Costa, A. R., Dodd, R. B., Chan, F. T., Michel, C. H., Kronenberg-Versteeg, D., Li, Y., Yang, S. P., Wakutani, Y., Meadows, W., Ferry, R. R., Dong, L., Tartaglia, G. G., Favrin, G., Lin, W. L., Dickson, D. W., Zhen, M., Ron, D., Schmitt-Ulms, G., Fraser, P. E., Shneider, N. A., Holt, C., Vendruscolo, M., Kaminski, C. F., and St George-Hyslop, P. (2015) ALS/FTD Mutation-Induced Phase Transition of FUS Liquid Droplets and Reversible Hydrogels into Irreversible Hydrogels Impairs RNP Granule Function. *Neuron* **88**, 678-690
 55. Tsai, Y. L., Coady, T. H., Lu, L., Zheng, D., Alland, I., Tian, B., Shneider, N. A., and Manley, J. L. (2020) ALS/FTD-associated protein FUS induces mitochondrial dysfunction by preferentially sequestering respiratory chain complex mRNAs. *Genes Dev* **34**, 785-805
 56. Verdile, V., De Paola, E., and Paronetto, M. P. (2019) Aberrant Phase Transitions: Side Effects and Novel Therapeutic Strategies in Human Disease. *Front Genet* **10**, 173

57. Winklhofer, K. F., Tatzelt, J., and Haass, C. (2008) The two faces of protein misfolding: gain- and loss-of-function in neurodegenerative diseases. *EMBO J* **27**, 336-349
58. Coady, T. H., and Manley, J. L. (2015) ALS mutations in TLS/FUS disrupt target gene expression. *Genes Dev* **29**, 1696-1706
59. Gomes, E., and Shorter, J. (2019) The molecular language of membraneless organelles. *J Biol Chem* **294**, 7115-7127
60. Fare, C. M., Villani, A., Drake, L. E., and Shorter, J. (2021) Higher-order organization of biomolecular condensates. *Open Biol* **11**, 210137
61. Levone, B. R., Lenzken, S. C., Antonaci, M., Maiser, A., Rapp, A., Conte, F., Reber, S., Mechttersheimer, J., Ronchi, A. E., Muhlemann, O., Leonhardt, H., Cardoso, M. C., Ruepp, M. D., and Barabino, S. M. L. (2021) FUS-dependent liquid-liquid phase separation is important for DNA repair initiation. *J Cell Biol* **220**
62. Gasset-Rosa, F., Lu, S., Yu, H., Chen, C., Melamed, Z., Guo, L., Shorter, J., Da Cruz, S., and Cleveland, D. W. (2019) Cytoplasmic TDP-43 De-mixing Independent of Stress Granules Drives Inhibition of Nuclear Import, Loss of Nuclear TDP-43, and Cell Death. *Neuron* **102**, 339-357 e337
63. Molliex, A., Temirov, J., Lee, J., Coughlin, M., Kanagaraj, A. P., Kim, H. J., Mittag, T., and Taylor, J. P. (2015) Phase separation by low complexity domains promotes stress granule assembly and drives pathological fibrillization. *Cell* **163**, 123-133
64. Hallegger, M., Chakrabarti, A. M., Lee, F. C. Y., Lee, B. L., Amaliotti, A. G., Odeh, H. M., Copley, K. E., Rubien, J. D., Portz, B., Kuret, K., Huppertz, I., Rau, F., Patani, R., Fawzi, N. L., Shorter, J., Luscombe, N. M., and Ule, J. (2021) TDP-43 condensation properties specify its RNA-binding and regulatory repertoire. *Cell* **184**, 4680-4696 e4622
65. Kato, M., Han, T. W., Xie, S., Shi, K., Du, X., Wu, L. C., Mirzaei, H., Goldsmith, E. J., Longgood, J., Pei, J., Grishin, N. V., Frantz, D. E., Schneider, J. W., Chen, S., Li, L., Sawaya, M. R., Eisenberg, D., Tycko, R., and McKnight, S. L. (2012) Cell-free formation of RNA granules: low complexity sequence domains form dynamic fibers within hydrogels. *Cell* **149**, 753-767
66. Buchan, J. R., and Parker, R. (2009) Eukaryotic stress granules: the ins and outs of translation. *Mol Cell* **36**, 932-941
67. Mahboubi, H., and Stochaj, U. (2017) Cytoplasmic stress granules: Dynamic modulators of cell signaling and disease. *Biochim Biophys Acta Mol Basis Dis* **1863**, 884-895
68. Protter, D. S. W., and Parker, R. (2016) Principles and Properties of Stress Granules. *Trends Cell Biol* **26**, 668-679
69. Wolozin, B., and Ivanov, P. (2019) Stress granules and neurodegeneration. *Nat Rev Neurosci* **20**, 649-666
70. Patel, A., Lee, H. O., Jawerth, L., Maharana, S., Jahnel, M., Hein, M. Y., Stoykov, S., Mahamid, J., Saha, S., Franzmann, T. M., Pozniakovski, A., Poser, I., Maghelli, N.,

- Royer, L. A., Weigert, M., Myers, E. W., Grill, S., Drechsel, D., Hyman, A. A., and Alberti, S. (2015) A Liquid-to-Solid Phase Transition of the ALS Protein FUS Accelerated by Disease Mutation. *Cell* **162**, 1066-1077
71. Reineke, L. C., and Neilson, J. R. (2019) Differences between acute and chronic stress granules, and how these differences may impact function in human disease. *Biochem Pharmacol* **162**, 123-131
 72. Zhang, P., Fan, B., Yang, P., Temirov, J., Messing, J., Kim, H. J., and Taylor, J. P. (2019) Chronic optogenetic induction of stress granules is cytotoxic and reveals the evolution of ALS-FTD pathology. *Elife* **8**
 73. Mann, J. R., Gleixner, A. M., Mauna, J. C., Gomes, E., DeChellis-Marks, M. R., Needham, P. G., Copley, K. E., Hurtle, B., Portz, B., Pyles, N. J., Guo, L., Calder, C. B., Wills, Z. P., Pandey, U. B., Kofler, J. K., Brodsky, J. L., Thathiah, A., Shorter, J., and Donnelly, C. J. (2019) RNA Binding Antagonizes Neurotoxic Phase Transitions of TDP-43. *Neuron* **102**, 321-338 e328
 74. Hutten, S., Usluer, S., Bourgeois, B., Simonetti, F., Odeh, H. M., Fare, C. M., Czuppa, M., Hruska-Plochan, M., Hofweber, M., Polymenidou, M., Shorter, J., Edbauer, D., Madl, T., and Dormann, D. (2020) Nuclear Import Receptors Directly Bind to Arginine-Rich Dipeptide Repeat Proteins and Suppress Their Pathological Interactions. *Cell Rep* **33**, 108538
 75. Jovicic, A., Mertens, J., Boeynaems, S., Bogaert, E., Chai, N., Yamada, S. B., Paul, J. W., 3rd, Sun, S., Herdy, J. R., Bieri, G., Kramer, N. J., Gage, F. H., Van Den Bosch, L., Robberecht, W., and Gitler, A. D. (2015) Modifiers of C9orf72 dipeptide repeat toxicity connect nucleocytoplasmic transport defects to FTD/ALS. *Nat Neurosci* **18**, 1226-1229
 76. Freibaum, B. D., Lu, Y., Lopez-Gonzalez, R., Kim, N. C., Almeida, S., Lee, K. H., Badders, N., Valentine, M., Miller, B. L., Wong, P. C., Petrucelli, L., Kim, H. J., Gao, F. B., and Taylor, J. P. (2015) GGGGCC repeat expansion in C9orf72 compromises nucleocytoplasmic transport. *Nature* **525**, 129-133
 77. Hayes, L. R., Duan, L., Bowen, K., Kalab, P., and Rothstein, J. D. (2020) C9orf72 arginine-rich dipeptide repeat proteins disrupt karyopherin-mediated nuclear import. *Elife* **9**
 78. Cicardi, M., Kankate, V., Sriramoji, S., Krishnamurthy, K., Markandaiah, S., Verdone, B., Girdhar, A., Nelson, A., Rivas, L., Boehringer, A., Haeusler, A., Pasinelli, P., Guo, L., and Trotti, D. (2022) Kap β 2 is a modifier of the C9orf72-linked glycine-arginine dipeptide neurotoxicity. *bioRxiv*, 2022.2009.2030.510384
 79. Conte, A., Lattante, S., Zollino, M., Marangi, G., Luigetti, M., Del Grande, A., Servidei, S., Trombetta, F., and Sabatelli, M. (2012) P525L FUS mutation is consistently associated with a severe form of juvenile amyotrophic lateral sclerosis. *Neuromuscul Disord* **22**, 73-75
 80. Corcia, P., Danel, V., Lacour, A., Beltran, S., Andres, C., Couratier, P., Blasco, H., and Vourc'h, P. (2017) A novel mutation of the C-terminal amino acid of FUS (Y526C)

- strengthens FUS gene as the most frequent genetic factor in aggressive juvenile ALS. *Amyotroph Lateral Scler Frontotemporal Degener* **18**, 298-301
81. Niu, C., Zhang, J., Gao, F., Yang, L., Jia, M., Zhu, H., and Gong, W. (2012) FUS-NLS/Transportin 1 complex structure provides insights into the nuclear targeting mechanism of FUS and the implications in ALS. *PLoS One* **7**, e47056
 82. Chook, Y. M., and Blobel, G. (2001) Karyopherins and nuclear import. *Curr Opin Struct Biol* **11**, 703-715
 83. Cansizoglu, A. E., Lee, B. J., Zhang, Z. C., Fontoura, B. M., and Chook, Y. M. (2007) Structure-based design of a pathway-specific nuclear import inhibitor. *Nat Struct Mol Biol* **14**, 452-454
 84. Yoshimura, S. H., and Hirano, T. (2016) HEAT repeats – versatile arrays of amphiphilic helices working in crowded environments? *Journal of Cell Science* **129**, 3963-3970
 85. Fukuhara, N., Fernandez, E., Ebert, J., Conti, E., and Svergun, D. (2004) Conformational variability of nucleo-cytoplasmic transport factors. *J Biol Chem* **279**, 2176-2181
 86. Cansizoglu, A. E., and Chook, Y. M. (2007) Conformational heterogeneity of karyopherin beta2 is segmental. *Structure* **15**, 1431-1441
 87. Iijima, M., Suzuki, M., Tanabe, A., Nishimura, A., and Yamada, M. (2006) Two motifs essential for nuclear import of the hnRNP A1 nucleocytoplasmic shuttling sequence M9 core. *FEBS Lett* **580**, 1365-1370
 88. Shorter, J., and Southworth, D. R. (2019) Spiraling in Control: Structures and Mechanisms of the Hsp104 Disaggregase. *Cold Spring Harb Perspect Biol* **11**
 89. Erives, A. J., and Fassler, J. S. (2015) Metabolic and chaperone gene loss marks the origin of animals: evidence for Hsp104 and Hsp78 chaperones sharing mitochondrial enzymes as clients. *PLoS One* **10**, e0117192
 90. Shorter, J. (2008) Hsp104: a weapon to combat diverse neurodegenerative disorders. *Neurosignals* **16**, 63-74
 91. Sweeny, E. A., and Shorter, J. (2016) Mechanistic and Structural Insights into the Prion-Disaggregase Activity of Hsp104. *J Mol Biol* **428**, 1870-1885
 92. Ju, S., Tardiff, D. F., Han, H., Divya, K., Zhong, Q., Maquat, L. E., Bosco, D. A., Hayward, L. J., Brown, R. H., Jr., Lindquist, S., Ringe, D., and Petsko, G. A. (2011) A yeast model of FUS/TLS-dependent cytotoxicity. *PLoS Biol* **9**, e1001052
 93. Sun, Z., Diaz, Z., Fang, X., Hart, M. P., Chesi, A., Shorter, J., and Gitler, A. D. (2011) Molecular determinants and genetic modifiers of aggregation and toxicity for the ALS disease protein FUS/TLS. *PLoS Biol* **9**, e1000614

94. Jackrel, M. E., DeSantis, M. E., Martinez, B. A., Castellano, L. M., Stewart, R. M., Caldwell, K. A., Caldwell, G. A., and Shorter, J. (2014) Potentiated Hsp104 variants antagonize diverse proteotoxic misfolding events. *Cell* **156**, 170-182
95. Sabatelli, M., Moncada, A., Conte, A., Lattante, S., Marangi, G., Luigetti, M., Lucchini, M., Mirabella, M., Romano, A., Del Grande, A., Bisogni, G., Doronzio, P. N., Rossini, P. M., and Zollino, M. (2013) Mutations in the 3' untranslated region of FUS causing FUS overexpression are associated with amyotrophic lateral sclerosis. *Hum Mol Genet* **22**, 4748-4755
96. Dini Modigliani, S., Morlando, M., Errichelli, L., Sabatelli, M., and Bozzoni, I. (2014) An ALS-associated mutation in the FUS 3'-UTR disrupts a microRNA-FUS regulatory circuitry. *Nat Commun* **5**, 4335
97. Jackrel, M. E., and Shorter, J. (2014) Potentiated Hsp104 variants suppress toxicity of diverse neurodegenerative disease-linked proteins. *Dis Model Mech* **7**, 1175-1184
98. Jackrel, M. E., Yee, K., Tariq, A., Chen, A. I., and Shorter, J. (2015) Disparate Mutations Confer Therapeutic Gain of Hsp104 Function. *ACS Chem Biol* **10**, 2672-2679
99. Tariq, A., Lin, J., Jackrel, M. E., Hesketh, C. D., Carman, P. J., Mack, K. L., Weitzman, R., Gambogi, C., Hernandez Murillo, O. A., Sweeny, E. A., Gurpinar, E., Yokom, A. L., Gates, S. N., Yee, K., Sudesh, S., Stillman, J., Rizo, A. N., Southworth, D. R., and Shorter, J. (2019) Mining Disaggregase Sequence Space to Safely Counter TDP-43, FUS, and alpha-Synuclein Proteotoxicity. *Cell Rep* **28**, 2080-2095 e2086
100. Yasuda, K., Clatterbuck-Soper, S. F., Jackrel, M. E., Shorter, J., and Mili, S. (2017) FUS inclusions disrupt RNA localization by sequestering kinesin-1 and inhibiting microtubule detyrosination. *J Cell Biol* **216**, 1015-1034
101. Daigle, J. G., Lanson, N. A., Jr., Smith, R. B., Casci, I., Maltare, A., Monaghan, J., Nichols, C. D., Kryndushkin, D., Shewmaker, F., and Pandey, U. B. (2013) RNA-binding ability of FUS regulates neurodegeneration, cytoplasmic mislocalization and incorporation into stress granules associated with FUS carrying ALS-linked mutations. *Hum Mol Genet* **22**, 1193-1205
102. Barmada, S. J., Ju, S., Arjun, A., Batarse, A., Archbold, H. C., Peisach, D., Li, X., Zhang, Y., Tank, E. M., Qiu, H., Huang, E. J., Ringe, D., Petsko, G. A., and Finkbeiner, S. (2015) Amelioration of toxicity in neuronal models of amyotrophic lateral sclerosis by hUPF1. *Proc Natl Acad Sci U S A* **112**, 7821-7826
103. Tariq, A., Lin, J., Noll, M. M., Torrente, M. P., Mack, K. L., Murillo, O. H., Jackrel, M. E., and Shorter, J. (2018) Potentiating Hsp104 activity via phosphomimetic mutations in the middle domain. *FEMS Yeast Res* **18**
104. Dian, C., Bernaudat, F., Langer, K., Oliva, M. F., Fornerod, M., Schoehn, G., Muller, C. W., and Petosa, C. (2013) Structure of a truncation mutant of the nuclear export factor CRM1 provides insights into the auto-inhibitory role of its C-terminal helix. *Structure* **21**, 1338-1349

105. Tsytlonok, M., Craig, P. O., Sivertsson, E., Serquera, D., Perrett, S., Best, R. B., Wolynes, P. G., and Itzhaki, L. S. (2013) Complex energy landscape of a giant repeat protein. *Structure* **21**, 1954-1965
106. Robinson, E., Shorter, J., and Guo, L. (2020) Karyopherin-beta2 Inhibits and Reverses Aggregation and Liquid-liquid Phase Separation of the ALS/FTD-Associated Protein FUS. *Bio Protoc* **10**, e3725
107. Yang, L., Gal, J., Chen, J., and Zhu, H. (2014) Self-assembled FUS binds active chromatin and regulates gene transcription. *Proc Natl Acad Sci U S A* **111**, 17809-17814
108. Reber, S., Jutzi, D., Lindsay, H., Devoy, A., Mechttersheimer, J., Levone, B. R., Domanski, M., Bentmann, E., Dormann, D., Muhlemann, O., Barabino, S. M. L., and Ruepp, M. D. (2021) The phase separation-dependent FUS interactome reveals nuclear and cytoplasmic function of liquid-liquid phase separation. *Nucleic Acids Res* **49**, 7713-7731
109. Mallet, P. L., and Bachand, F. (2013) A proline-tyrosine nuclear localization signal (PY-NLS) is required for the nuclear import of fission yeast PAB2, but not of human PABPN1. *Traffic* **14**, 282-294
110. Sweeny, E. A., Jackrel, M. E., Go, M. S., Sochor, M. A., Razzo, B. M., DeSantis, M. E., Gupta, K., and Shorter, J. (2015) The Hsp104 N-terminal domain enables disaggregase plasticity and potentiation. *Mol Cell* **57**, 836-849
111. Bayliss, R., Littlewood, T., and Stewart, M. (2000) Structural basis for the interaction between FxFG nucleoporin repeats and importin-beta in nuclear trafficking. *Cell* **102**, 99-108
112. Bednenko, J., Cingolani, G., and Gerace, L. (2003) Importin beta contains a COOH-terminal nucleoporin binding region important for nuclear transport. *J Cell Biol* **162**, 391-401
113. Chi, N. C., and Adam, S. A. (1997) Functional domains in nuclear import factor p97 for binding the nuclear localization sequence receptor and the nuclear pore. *Mol Biol Cell* **8**, 945-956
114. Kutay, U., Izaurralde, E., Bischoff, F. R., Mattaj, I. W., and Gorlich, D. (1997) Dominant-negative mutants of importin-beta block multiple pathways of import and export through the nuclear pore complex. *EMBO J* **16**, 1153-1163
115. Thomas, L., Askjaer, P., and Seydoux, G. (2022) Multiple mechanisms prevent ectopic condensation of FG nucleoporins in the cytoplasm. *bioRxiv*, 2022.2008.2022.504855
116. Chook, Y. M., Jung, A., Rosen, M. K., and Blobel, G. (2002) Uncoupling Kapbeta2 substrate dissociation and ran binding. *Biochemistry* **41**, 6955-6966
117. Dormann, D., Madl, T., Valori, C. F., Bentmann, E., Tahirovic, S., Abou-Ajram, C., Kremmer, E., Ansorge, O., Mackenzie, I. R., Neumann, M., and Haass, C. (2012) Arginine methylation next to the PY-NLS modulates Transportin binding and nuclear import of FUS. *EMBO J* **31**, 4258-4275

118. Dormann, D., Rodde, R., Edbauer, D., Bentmann, E., Fischer, I., Hruscha, A., Than, M. E., Mackenzie, I. R., Capell, A., Schmid, B., Neumann, M., and Haass, C. (2010) ALS-associated fused in sarcoma (FUS) mutations disrupt Transportin-mediated nuclear import. *EMBO J* **29**, 2841-2857
119. Sproviero, W., La Bella, V., Mazzei, R., Valentino, P., Rodolico, C., Simone, I. L., Logroscino, G., Ungaro, C., Magariello, A., Patitucci, A., Tedeschi, G., Spataro, R., Condino, F., Bono, F., Citrigno, L., Monsurro, M. R., Muglia, M., Gambardella, A., Quattrone, A., and Conforti, F. L. (2012) FUS mutations in sporadic amyotrophic lateral sclerosis: clinical and genetic analysis. *Neurobiol Aging* **33**, 837 e831-835
120. Liu, Q., Shu, S., Wang, R. R., Liu, F., Cui, B., Guo, X. N., Lu, C. X., Li, X. G., Liu, M. S., Peng, B., Cui, L. Y., and Zhang, X. (2016) Whole-exome sequencing identifies a missense mutation in hnRNPA1 in a family with flail arm ALS. *Neurology* **87**, 1763-1769
121. Naruse, H., Ishiura, H., Mitsui, J., Date, H., Takahashi, Y., Matsukawa, T., Tanaka, M., Ishii, A., Tamaoka, A., Hokkoku, K., Sonoo, M., Segawa, M., Ugawa, Y., Doi, K., Yoshimura, J., Morishita, S., Goto, J., and Tsuji, S. (2018) Molecular epidemiological study of familial amyotrophic lateral sclerosis in Japanese population by whole-exome sequencing and identification of novel HNRNPA1 mutation. *Neurobiol Aging* **61**, 255.e259-255.e216
122. Carey, J. L., and Guo, L. (2022) Liquid-Liquid Phase Separation of TDP-43 and FUS in Physiology and Pathology of Neurodegenerative Diseases. *Front Mol Biosci* **9**, 826719
123. Kuzmin, D. A., Shutova, M. V., Johnston, N. R., Smith, O. P., Fedorin, V. V., Kukushkin, Y. S., van der Loo, J. C. M., and Johnstone, E. C. (2021) The clinical landscape for AAV gene therapies. *Nat Rev Drug Discov* **20**, 173-174
124. Au, H. K. E., Isalan, M., and Mielcarek, M. (2021) Gene Therapy Advances: A Meta-Analysis of AAV Usage in Clinical Settings. *Front Med* **8**, 809118
125. Mendell, J. R., Al-Zaidy, S. A., Rodino-Klapac, L. R., Goodspeed, K., Gray, S. J., Kay, C. N., Boye, S. L., Boye, S. E., George, L. A., Salabarria, S., Corti, M., Byrne, B. J., and Tremblay, J. P. (2021) Current Clinical Applications of In Vivo Gene Therapy with AAVs. *Mol Ther* **29**, 464-488
126. Wu, Z., Yang, H., and Colosi, P. (2010) Effect of genome size on AAV vector packaging. *Mol Ther* **18**, 80-86
127. Marrone, L., Marchi, P. M., and Azzouz, M. (2022) Circumventing the packaging limit of AAV-mediated gene replacement therapy for neurological disorders. *Expert Opin Biol Ther*, 1-14
128. Kim, H. J., and Taylor, J. P. (2017) Lost in Transportation: Nucleocytoplasmic Transport Defects in ALS and Other Neurodegenerative Diseases. *Neuron* **96**, 285-297
129. Moore, S., Rabichow, B. E., and Sattler, R. (2020) The Hitchhiker's Guide to Nucleocytoplasmic Trafficking in Neurodegeneration. *Neurochem Res* **45**, 1306-1327

130. Fallini, C., Khalil, B., Smith, C. L., and Rossoll, W. (2020) Traffic jam at the nuclear pore: All roads lead to nucleocytoplasmic transport defects in ALS/FTD. *Neurobiol Dis* **140**, 104835
131. Shubina-Oleinik, O., Nist-Lund, C., French, C., Rockowitz, S., Shearer, A. E., and Holt, J. R. (2021) Dual-vector gene therapy restores cochlear amplification and auditory sensitivity in a mouse model of DFNB16 hearing loss. *Sci Adv* **7**, eabi7629
132. Schirmer, E. C., Homann, O. R., Kowal, A. S., and Lindquist, S. (2004) Dominant gain-of-function mutations in Hsp104p reveal crucial roles for the middle region. *Mol Biol Cell* **15**, 2061-2072
133. Cormack, B. P., Valdivia, R. H., and Falkow, S. (1996) FACS-optimized mutants of the green fluorescent protein (GFP). *Gene* **173**, 33-38
134. Schneider, C. A., Rasband, W. S., and Eliceiri, K. W. (2012) NIH Image to ImageJ: 25 years of image analysis. *Nature Methods* **9**, 671-675
135. Gietz, R. D., and Schiestl, R. H. (2007) High-efficiency yeast transformation using the LiAc/SS carrier DNA/PEG method. *Nat Protoc* **2**, 31-34
136. Schindelin, J., Arganda-Carreras, I., Frise, E., Kaynig, V., Longair, M., Pietzsch, T., Preibisch, S., Rueden, C., Saalfeld, S., Schmid, B., Tinevez, J. Y., White, D. J., Hartenstein, V., Eliceiri, K., Tomancak, P., and Cardona, A. (2012) Fiji: an open-source platform for biological-image analysis. *Nat Methods* **9**, 676-682

Figure 1. Binding of Kap β 2 to the PY-NLS of FUS is segmental. (A) Left, a crystal structure of Kap β 2 in its unbound state (PDB: 2QMR) with each HEAT repeat indicated. Each structural segment is colored: N-terminal segment, N1 (green), the first C-terminal segment, C1 (teal), and the second C-terminal segment, C2 (light pink). Middle, a structure of Kap β 2 in its Ran-GTP bound state, where Kap β 2 is gray and Ran-GTP is salmon (PDB: 1QBK). Right, Kap β 2 is shown bound to the PY-NLS of FUS, where epitope 1 is lilac, epitope 2 is teal, and epitope 3 is lime (PDB: 4FDD). Kap β 2 adopts a largely similar structure in all three states, with slight variations at the N- and C-terminal segments to accommodate binding partners. (B) Top, the domain architecture of FUS, with the PY-NLS sequence highlighted. FUS harbors an N-terminal prion-like domain (PrLD), followed by an RNA-recognition motif (RRM), an Arg-Gly-Gly-rich (RGG) domain, a zinc finger (ZnF), and a second RGG domain. Bottom, zoomed-in images of each epitope of the FUS PY-NLS bound to Kap β 2. The residues of Kap β 2 that contact the PY-NLS are colored corresponding to which epitope they interact with, where epitope 3 contacts are colored in lime, epitope 2 contacts are teal, and epitope 1 contacts are lilac. (C) A cartoon depiction of Kap β 2 bound to the PY-NLS of FUS, where the outer circles represent each interior (B) helix of the indicated HEAT repeat and the inner circles represent the residues of the FUS PY-NLS. The outer circles are color-coded according to which segment they belong to, with segment N1 shown in green, segment C1 shown in teal, and segment C2 shown in pink. Interactions between Kap β 2 and FUS are shown as lines connecting Kap β 2 residues and FUS residues. Lines are colored to indicate residues making epitope contacts, where epitope 3 contacts are colored in lime, epitope 2 contacts are teal, and epitope 1 contacts are lilac. When Kap β 2 binds to FUS and other cargo, stereotypic residues within the inner helix of each HEAT repeat contact distinct cargo epitopes. W460 and W730, which are mutated to alanine in Kap β 2^{W460A:W730A} are indicated with red asterisks. (D) Top, a diagram of Kap β 2 with specific structural features highlighted. The black lines indicate the HEAT repeats (shown as numbered gray boxes) comprising the N1, C1, and C2 segments; the lime, teal, and lilac lines indicate the regions of Kap β 2 that interact with epitope 3, 2, and 1, respectively. Bottom, a diagram of each truncation investigated here, named for the HEAT repeats contained in the construct including the amino acids (aa) contained in each construct, and the predicted molecular weight (MW).

Figure 2. Kap β 2 and H8-E mitigate FUS toxicity in yeast. (A) $\Delta hsp104$ yeast with galactose-inducible FUS integrated were transformed with the indicated galactose-inducible Kap β 2 construct and serially diluted 3-fold onto agar plates with either glucose (expression off) or galactose (expression on) as the carbon source. In the absence of Kap β 2 (vector), FUS expression is very toxic. This toxicity can be mitigated by the expression of full-length (FL) Kap β 2. Growth is also restored with the expression of a C-terminal fragment, H8-E. None of the other Kap β 2 truncations mitigate FUS toxicity. (B) Western blot showing FUS and Kap β 2 expression for each condition. The Kap β 2 antibody recognizes residues 298-389 in the eighth HEAT repeat, and thus H1-H4, H9-E, and H12-E are not recognized. However, FUS expression is equal in all conditions as compared to the loading control, α -tubulin. (C) FLAG-tagged Kap β 2 constructs were transformed into $\Delta hsp104$ yeast with integrated galactose-inducible FUS, and serially diluted 3-fold onto agar plates with either glucose or galactose as the carbon source. FL Kap β 2-FLAG and H8-E-FLAG suppress FUS toxicity, whereas other Kap β 2 truncations do not. (D) A western blot illustrates that most truncations are expressed to similar levels, with H12-E showing slightly lower expression relative to the loading control, α -tubulin. (E) Western blots were quantified by first normalizing the intensity of the FLAG band to the intensity of the loading control, α -tubulin. The ratio for FL Kap β 2 was then set as 1, and all other values were normalized to FL. H1-H4, H1-H10, and H1-H13 each show somewhat higher levels of expression, whereas H9-E and H12-E show somewhat lower levels of expression. Data points represent individual blots, bars represent means \pm SD, n=2-4. An ordinary one-way ANOVA with Tukey's multiple comparisons test was used to compare the normalized intensity of the FLAG band for each condition to all other conditions. No pair-wise comparisons were significantly different.

Figure 3. Kap β 2 and H8-E resolve cytoplasmic FUS foci and promote nuclear localization of FUS in yeast. (A) $\Delta hsp104$ yeast with integrated galactose-inducible FUS-GFP were transformed with the indicated galactose-inducible Kap β 2 truncation and grown in galactose-containing media for 5 h. At this time, fluorescence microscopy reveals that yeast without Kap β 2 harbor cytoplasmic FUS foci. In contrast, cells expressing FL Kap β 2 (untagged or with a C-terminal FLAG tag) have a low proportion of cells with cytoplasmic FUS foci and a large proportion of cells with nuclear FUS localization. Similar results are observed with H8-E. Expression of H1-H13 or H9-E-FLAG can reduce the proportion of cells with cytoplasmic FUS foci without restoring nuclear FUS localization. H1-H4-FLAG, H8-H16, and H12-E-FLAG are unable to decrease the proportion of cells with cytoplasmic FUS foci or increase the proportion of cells with nuclear FUS localization. Scale bar = 5 μ m. (B) Quantification of the percentage of cells with nuclear FUS localization for each condition. Points represent independent transformations, and at least 100 cells were counted per transformation. Values represent means \pm SD, n=3-7. For cells with nuclear FUS localization, an ordinary one-way ANOVA with Dunnett's multiple comparisons test was used to compare the percentage of cells with nuclear localization in each condition to cells expressing FL Kap β 2. (C) Quantification of the percentage of cells with cytoplasmic FUS foci. Points represent independent transformations, and at least 100 cells were counted per transformation. Values represent means \pm SD, n=3-7. An ordinary one-way ANOVA with Dunnett's multiple comparisons test was used to compare the percentage of cells with cytoplasmic FUS foci in each condition to the vector control; ****, p<0.0001. (D) Western blot of FUS-GFP yeast transformed with vector alone, FL Kap β 2, or the indicated Kap β 2 truncation. Probing with anti-FUS and anti-alpha-tubulin shows similar levels of protein expression across samples. Kap β 2 truncation expression, however, does vary, with H9-E-FLAG and H12-E-FLAG expressed at low levels relative to FL Kap β 2-FLAG.

Figure 4. Kap β 2 and H8-E robustly suppress FUS fibrillization. To measure the ability of Kap β 2 constructs to prevent FUS fibrillization, we incubated 3 μ M FUS with 1 μ g TEV protease and the indicated concentration of Kap β 2 and monitored turbidity at 395 nm. Increased turbidity indicates FUS self-assembly into fibrils and each curve represents the mean of 2-4 trials \pm SD. For each experiment, the maximal value of FUS turbidity in the absence of Kap β 2 was set to 100 and all data for that trial were normalized to that value. **(A-C)** Kinetics of FUS fibrillization in the presence of increasing concentrations of Kap β 2 (A), H1-H13 (B), or H8-E (C). FL Kap β 2 strongly suppresses FUS fibrillization. H1-H13 modestly inhibits FUS fibrillization, but only at stoichiometric excess. H8-E strongly suppresses FUS fibrillization. **(D)** To compare the ability of FL Kap β 2 and H8-E to suppress FUS fibrillization, the area under the curve produced at each concentration was used to construct a curve of aggregation vs. concentration (left). Comparing the half maximal inhibitory concentration (IC_{50}) reveals that the ability of H8-E to prevent FUS fibrillization is very similar to FL Kap β 2. IC_{50} values were derived from a non-linear curve fit with normalized responses and a variable slope. Each calculated IC_{50} value is plotted with its 95% confidence interval. An unpaired t-test was used to compare IC_{50} values. **(E, F)** Kinetics of FUS aggregation in the presence of increasing concentrations of His-SUMO-H8-H16 (E) or H9-E (F). High concentrations of His-SUMO-H8-H16 slightly inhibit FUS fibrillization. H9-E is unable to prevent FUS fibrillization even in excess. The structures presented here are based on PDB: 2QMR.

Figure 5. Kap β 2 and H8-E robustly disaggregate FUS fibrils. To measure the ability of Kap β 2 constructs to disaggregate FUS fibrils, we incubated 3 μ M FUS with 1 μ g TEV protease and monitored turbidity at 395 nm. After one hour of fibrillization, the indicated amount of Kap β 2 was added and turbidity was continually measured. Each curve represents the mean of 2-3 trials \pm SD. For each condition, the value of FUS turbidity immediately prior to adding Kap β 2 was set to 100 and all subsequent readings were normalized to that value. **(A-C)** Kinetics of FUS disaggregation by FL Kap β 2 (A), H1-H13 (B), or H8-E (C). FL Kap β 2 and H8-E rapidly disaggregate FUS. H1-H13 can partially reverse FUS fibrillization, but only to ~50% and over an extended period. **(D)** To compare activity of FL Kap β 2 and H8-E, the area under the curve produced at each concentration was used to construct a curve of aggregation vs. concentration (left). Half maximal effective concentration (EC_{50}) values were derived from a non-linear curve fit with normalized responses and a variable slope. Each calculated EC_{50} value is plotted with its 95% confidence interval. Comparing the EC_{50} reveals that the ability for H8-E to reverse FUS fibrillization is somewhat impaired relative to Kap β 2. An unpaired t-test was used to compare EC_{50} values. **, $p < 0.005$.

Figure 6. Kap β 2 and H8-E disperse heterotypic FUS:RNA condensates. (A-E) To assess the ability of Kap β 2 and truncation constructs to disperse FUS:RNA droplets, we mixed 1 μ M Cy3-labeled U₄₀ RNA with 1 μ M FUS, which form liquid-like droplets after 4 h. Taking images using fluorescence microscopy (A) or brightfield microscopy (B) 2 h after the addition of buffer or the indicated Kap β 2 construct demonstrates that FUS:RNA droplets are unaffected by the addition of buffer (scale bar = 20 μ m). By contrast, FL Kap β 2 (0.75 μ M) effectively disperses FUS:RNA droplets, reducing them in number (C), overall area of the coverslip occupied by condensates (D), and the average size of each droplet (E). H1-H13 can also reduce the number and total area of FUS:RNA droplets, but is not as effective as FL Kap β 2, and does not decrease individual droplet size. However, an equal concentration of H8-E can reduce the number and area of FUS:RNA droplets to a similar extent as FL Kap β 2. Data points in (C-E) represent individual images, and bars represent means \pm SD, n = 5. An ordinary one-way ANOVA with Dunnett's multiple comparisons test was used to compare the value for each condition to that of buffer alone. ****, $p < 0.0001$. Additionally, an unpaired t-test was used to compare FL and H8-E. **, $p < 0.004$.

Figure 7. Kap β 2 and H8-E prevent the formation of cytoplasmic FUS foci and promote FUS nuclear localization in human cells. (A) In HeLa cells, expression of GFP-FUS with mCherry alone results in ~25% of cells with cytoplasmic FUS puncta. When mCherry-FL-Kap β 2 is co-expressed with GFP-FUS, FUS is largely localized to the nucleus, with many fewer cells exhibiting cytoplasmic mislocalization. Furthermore, expression of H1-H13, H8-E, or H9-E also reduces the proportion of cells with cytoplasmic FUS foci. In contrast, cytoplasmic foci persist when H1-H10 and H12-E are expressed. These results suggest that in human cells where endogenous FL Kap β 2 is present, H1-H13 and H9-E can complement the endogenous chaperone machinery to antagonize FUS condensation and promote nuclear import. Scale bar = 20 μ m. (B) Quantification of the percentage of cells with cytoplasmic FUS foci indicates that the activity of each H1-H13, H8-E, and H9-E each is not statistically different from FL Kap β 2. Each point represents independent transfections. At least 100 cells were counted over three separate trials; data points represent individual transfections and bars show means \pm SEM, n= 3-4. An ordinary one-way ANOVA with Dunnett's multiple comparisons test was used to compare the percentage of cells with foci in each condition to cells expressing FL Kap β 2. **, p<0.005; ***, p<0.0005; ****, p<0.0001. (C) Quantifying the ratio of GFP signal coming from the cytoplasm and the nucleus shows that H1-H13, H8-E, and H9-E promote nuclear FUS localization to a level that is similar to that of FL Kap β 2. H1-H10 and H12-E however, are not as effective. Each point represents a single cell, n > 150 for each condition. A Kruskal-Wallis test with Dunn's multiple comparisons test was used to compare the nuclear GFP-FUS signal in each condition to cells expressing FL Kap β 2. *, p<0.05; ***, p<0.0009; ****, p<0.0001.

Figure S1. Kap β 2 and truncation variants are typically not toxic and robustly expressed in yeast. (A) $\Delta hsp104$ yeast were transformed with the indicated galactose-inducible Kap β 2 construct and serially diluted 3-fold onto agar plates with either glucose (expression off) or galactose (expression on) to assess toxicity of each Kap β 2 construct on its own. H1-H10 exhibits toxicity relative to vector, and FL Kap β 2, H8-E, and H9-E show slight toxicity. (B) $\Delta hsp104$ yeast with galactose-inducible FUS integrated into the strain were transformed with galactose-inducible FL Kap β 2 or Kap β 2^{W460A:W730A} (WWAA) and serially diluted 3-fold onto agar plates with either glucose (expression off) or galactose (expression on) as the carbon source. Media was prepared lacking histidine and uracil; the FUS plasmid contains genetic information for synthesizing histidine, and the Kap β 2 plasmid contains the genetic information for synthesizing uracil. In the absence of any Kap β 2, FUS expression is very toxic. This toxicity can be mitigated by the expression of full-length (FL) Kap β 2, but not the Kap β 2^{W460A:W730A} (WWAA) mutant. (C) A western blot probing yeast expressing FUS and either FL Kap β 2^{WT} or the WWAA mutant with an anti-Kap β 2 antibody shows that neither FUS nor Kap β 2 expression changes as a function of Kap β 2 variant expression relative to the α -tubulin loading control. (D) $\Delta hsp104$ yeast with no disease-associated protein integrated into the strain were transformed with either vector, FL Kap β 2 or the Kap β 2^{W460A:W730A} (WWAA) mutant and serially diluted 3-fold onto agar plates with either glucose (expression off) or galactose (expression on) as the carbon source to test for toxicity of WWAA on its own. WWAA is slightly more toxic than the WT FL protein. (E) $\Delta hsp104$ yeast with no disease-associated protein integrated into the strain were transformed with the indicated galactose-inducible FLAG-tagged Kap β 2 truncation and serially diluted 3-fold onto agar plates with either glucose (expression off) or galactose (expression on) as the carbon source to test for toxicity of each truncation on its own. As with the untagged variants, H1-H10-FLAG is more toxic relative to vector. H8-E-FLAG and H9-E-FLAG show less intrinsic toxicity than their untagged counterparts. (F) Probing yeast expressing FUS and either tagged or untagged FL Kap β 2 with an anti-Kap β 2 antibody shows that, compared to the untagged protein levels, the addition of the FLAG-tag does not affect FL Kap β 2 expression.

Figure S2. Kap β 2 and H8-E robustly suppress FUS fibrillization. (A) 5 μ g of purified His-SUMO-FL Kap β 2, cleaved FL Kap β 2, H1-H13, H8-E, His-SUMO-H8-H16, and H9-E were processed for SDS-PAGE and stained with Coomassie. (B) To measure the ability of His-SUMO-tagged Kap β 2 to prevent FUS fibrillization, we incubated 3 μ M FUS with 1 μ g TEV protease and the indicated concentration of His-SUMO-tagged Kap β 2 and monitored turbidity at 395 nm. Increased turbidity indicates FUS fibrillization and each curve represents the mean of 2 trials \pm SD. For each experiment, the maximal value of FUS turbidity in the absence of Kap β 2 was set to 100 and all data for that trial were normalized to that value. (C) To compare uncleaved and cleaved FL Kap β 2 chaperone activity, we calculated the area under the curve (AUC) for each concentration and set the AUC for FUS alone as 100 to normalize all other conditions to produce percent aggregation. Overlaying the plot of concentration vs. aggregation (%) for cleaved and uncleaved FL Kap β 2 shows that the uncleaved protein works as well as cleaved Kap β 2 in preventing the fibrillization of FUS, suggesting that the His-SUMO tag itself neither hinders nor enhances Kap β 2 chaperone activity in this assay, although it is likely stabilizing H8-H16. (D) We assessed the ability of Kap β 2^{W460A:W730A} (WWAA) to chaperone FUS. We incubated 3 μ M FUS with 1 μ g TEV protease and the indicated concentration of Kap β 2^{W460A:W730A} and monitored turbidity at 395 nm. Each curve represents the mean of 2-3 trials \pm SD. The maximal value of FUS turbidity in the absence of Kap β 2 was set to 100 and all data for that trial were normalized to that value. (E) In Figure 4, we assessed the ability of FL and truncated Kap β 2 constructs to chaperone FUS. We incubated 3 μ M FUS with 1 μ g TEV protease and the indicated concentration of each Kap β 2 construct and monitored turbidity at 395 nm for 90 minutes. Here, only the final normalized absorbance reading (where the maximum value for FUS alone is set as 100) is plotted for each Kap β 2 construct at each of the indicated concentrations. Data points represent individual trials and bars represent means \pm SD. An ordinary one-way ANOVA with Dunnett's multiple comparisons test was used to compare the final time point of each condition to FUS alone for that construct. *, $p < 0.03$; **, $p < 0.008$; ***, $p < 0.0003$; ****, $p < 0.0001$.

Figure S3. Kap β 2 and H8-E robustly reverse FUS fibrillization. To measure the ability of Kap β 2^{W460A:W730A} (WWAA) to reverse FUS fibrillization, we incubated 3 μ M FUS with 1 μ g TEV protease and monitored turbidity at 395 nm. After one hour of fibrillization, the indicated amount of Kap β 2^{W460A:W730A} was added and turbidity was continually measured. Each curve represents the mean of 2-3 trials \pm SD. For each condition, the value of FUS turbidity immediately prior to adding Kap β 2 was set to 100 and all subsequent readings were normalized to that value. **(A)** Kinetics of FUS disaggregation by Kap β 2^{W460A:W730A} show that Kap β 2^{W460A:W730A} does not disaggregate FUS. **(B)** In Figure 5, we assessed the ability of FL and truncated Kap β 2 constructs to disaggregate FUS. We incubated 3 μ M FUS with 1 μ g TEV protease for 60 minutes before adding the indicated construct and measuring turbidity for 40 or 80 minutes. The difference between the starting value and the final reading for the normalized absorbance values (where timepoint 0 was set to 100) was measured for disaggregation reactions for each construct. Data points represent individual trials and bars represent means \pm SD. An ordinary one-way ANOVA with Dunnett's multiple comparisons test was used to compare the final time point of each condition to FUS alone for that construct. **, $p < 0.005$; ***, $p < 0.0006$; ****, $p < 0.0001$.

Figure S4. Kap β 2 and truncation variants are typically expressed in human cells. A western blot of lysates of HeLa cells transfected with GFP-FUS and either mCherry alone or mCherry-tagged FL Kap β 2 or the indicated construct. Probing with anti-GFP shows equal FUS-GFP expression. However, probing for anti-mCherry indicates that expression of select truncations is reduced (as for H1-H13, H8-E, and H9-E) or completely absent (H8-H16). α -tubulin is used as a loading control across samples.

Journal Pre-proof

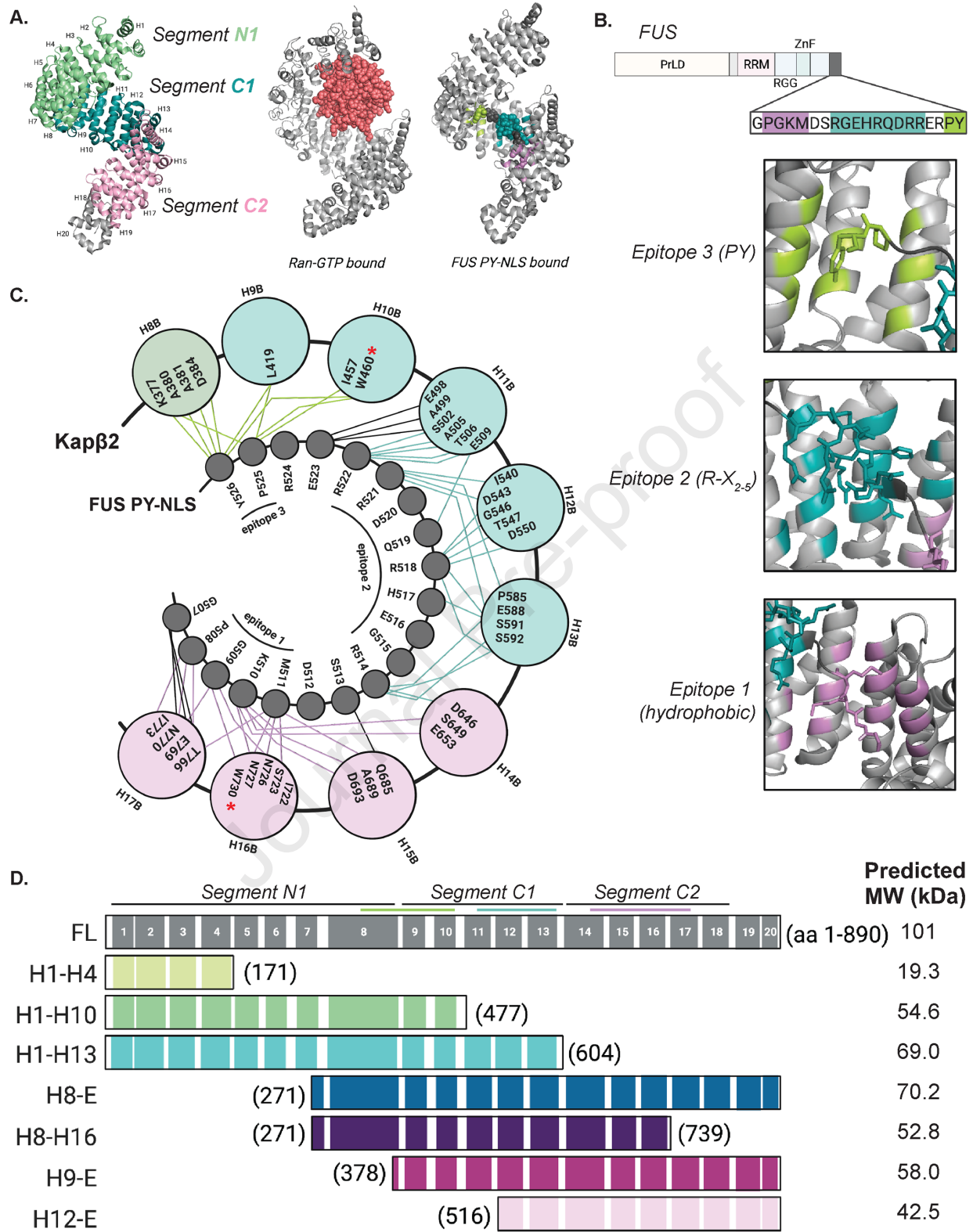


Figure 1

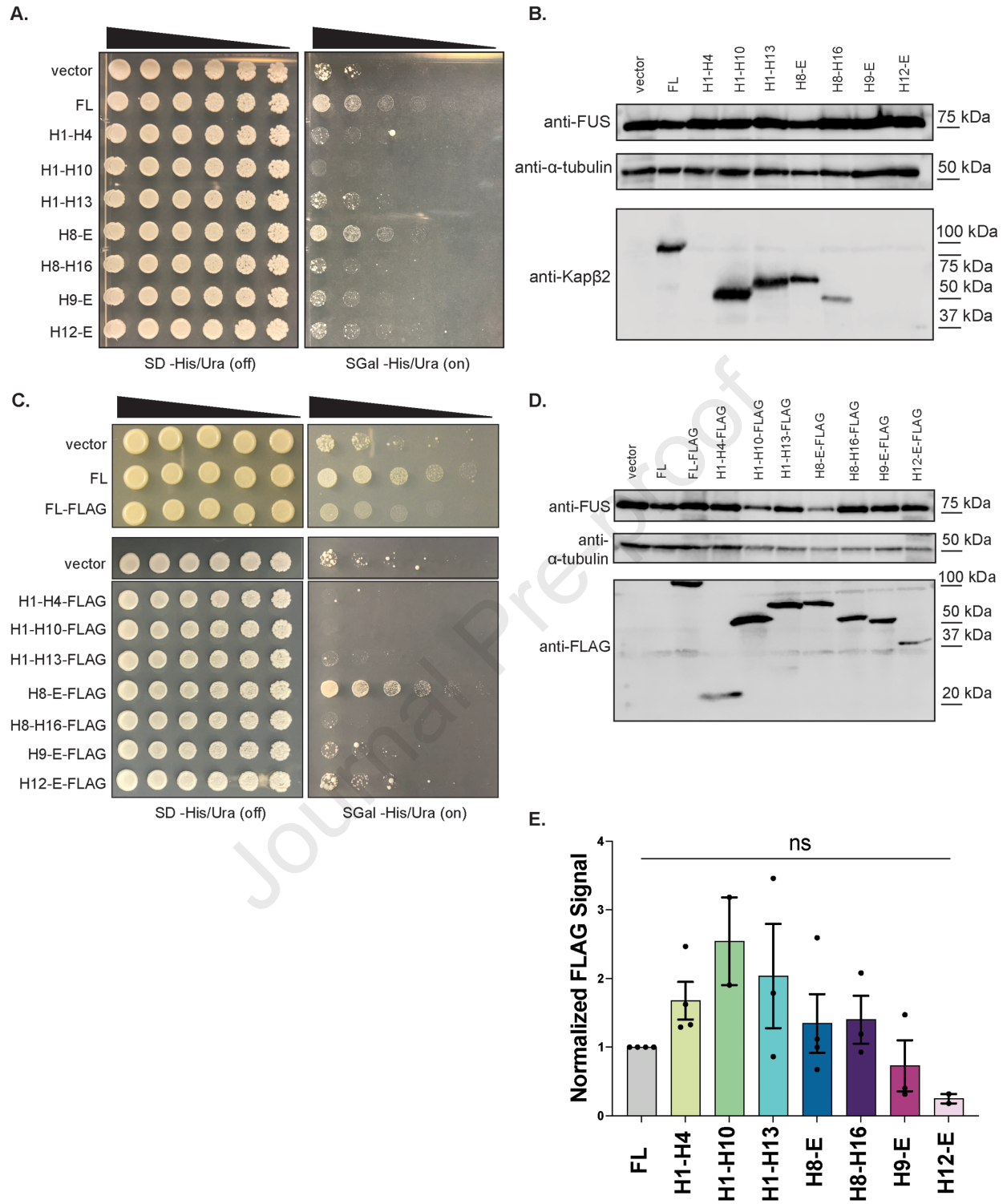


Figure 2

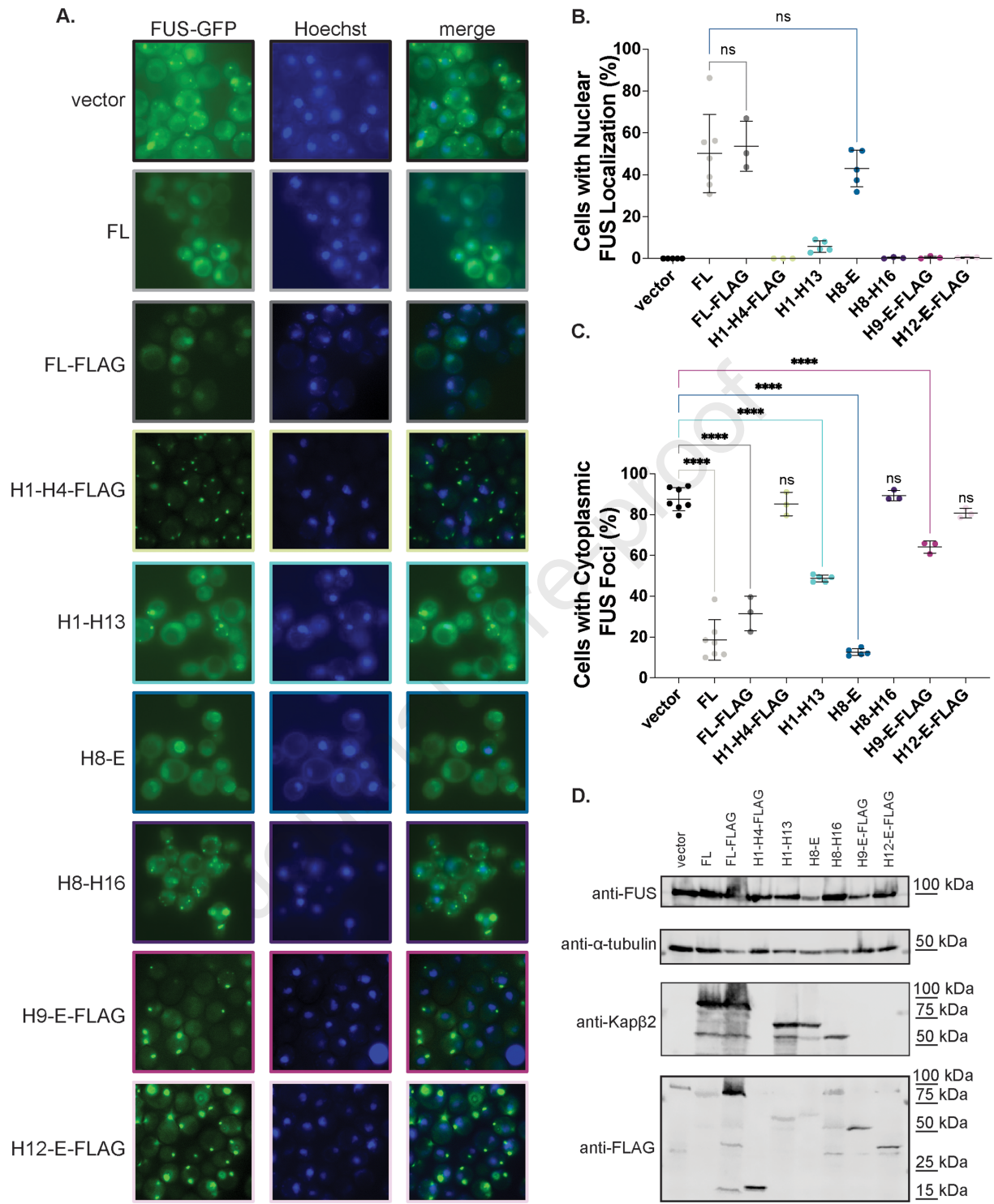


Figure 3

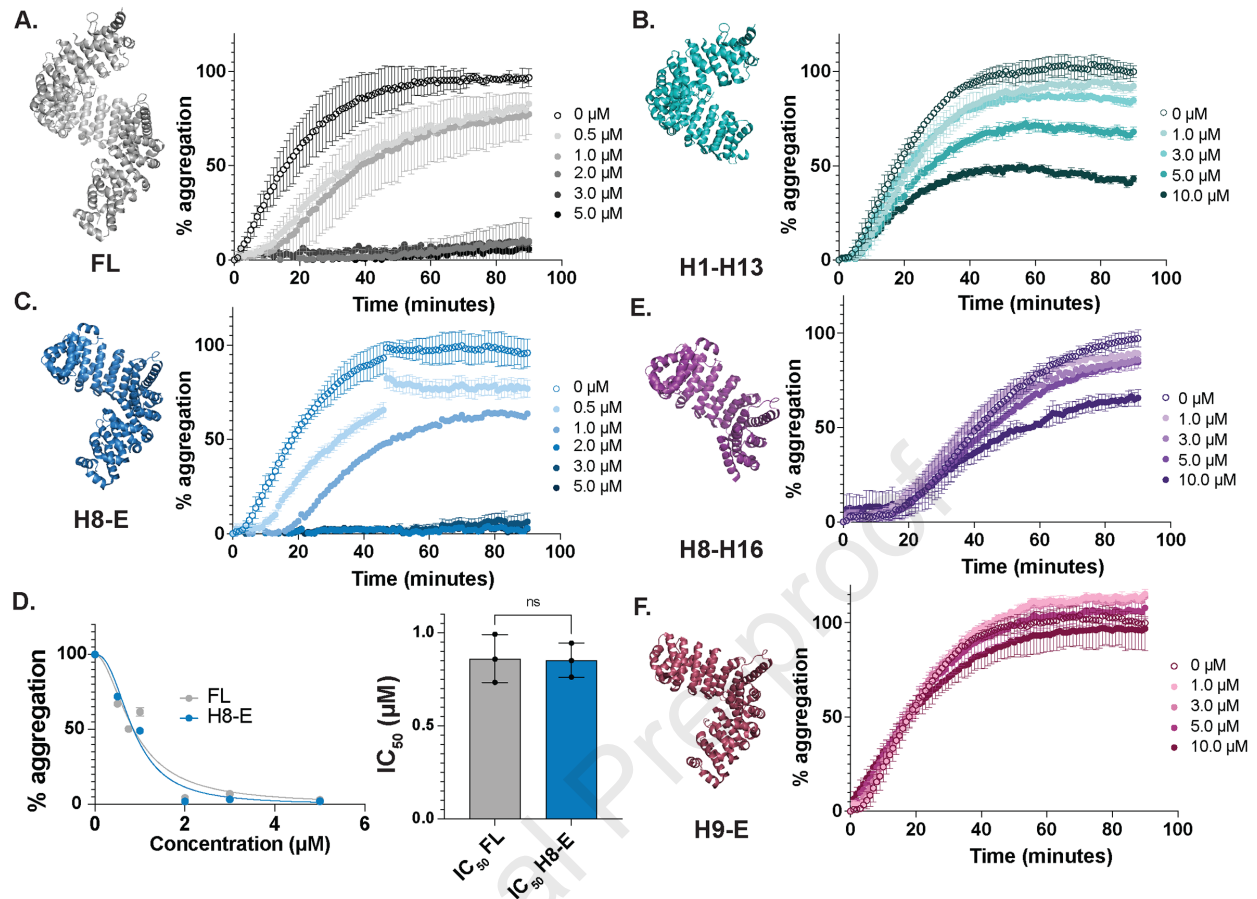


Figure 4

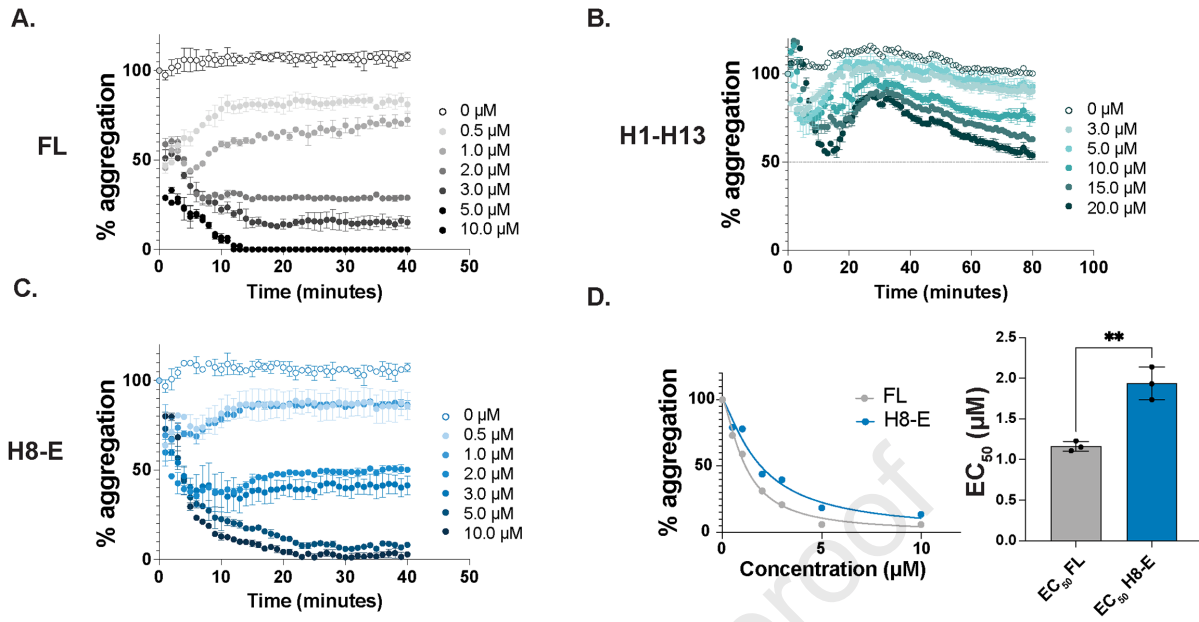


Figure 5

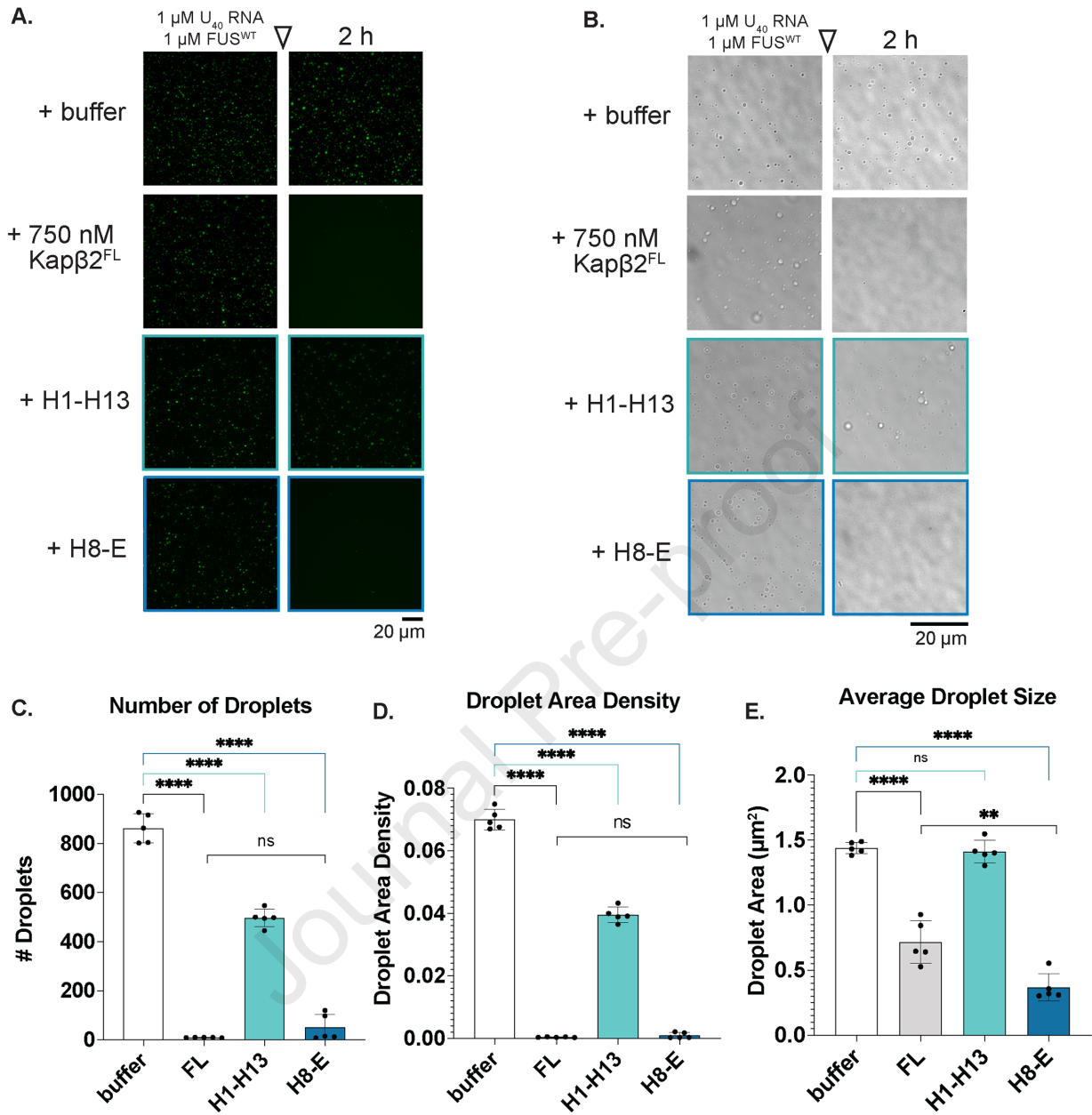


Figure 6

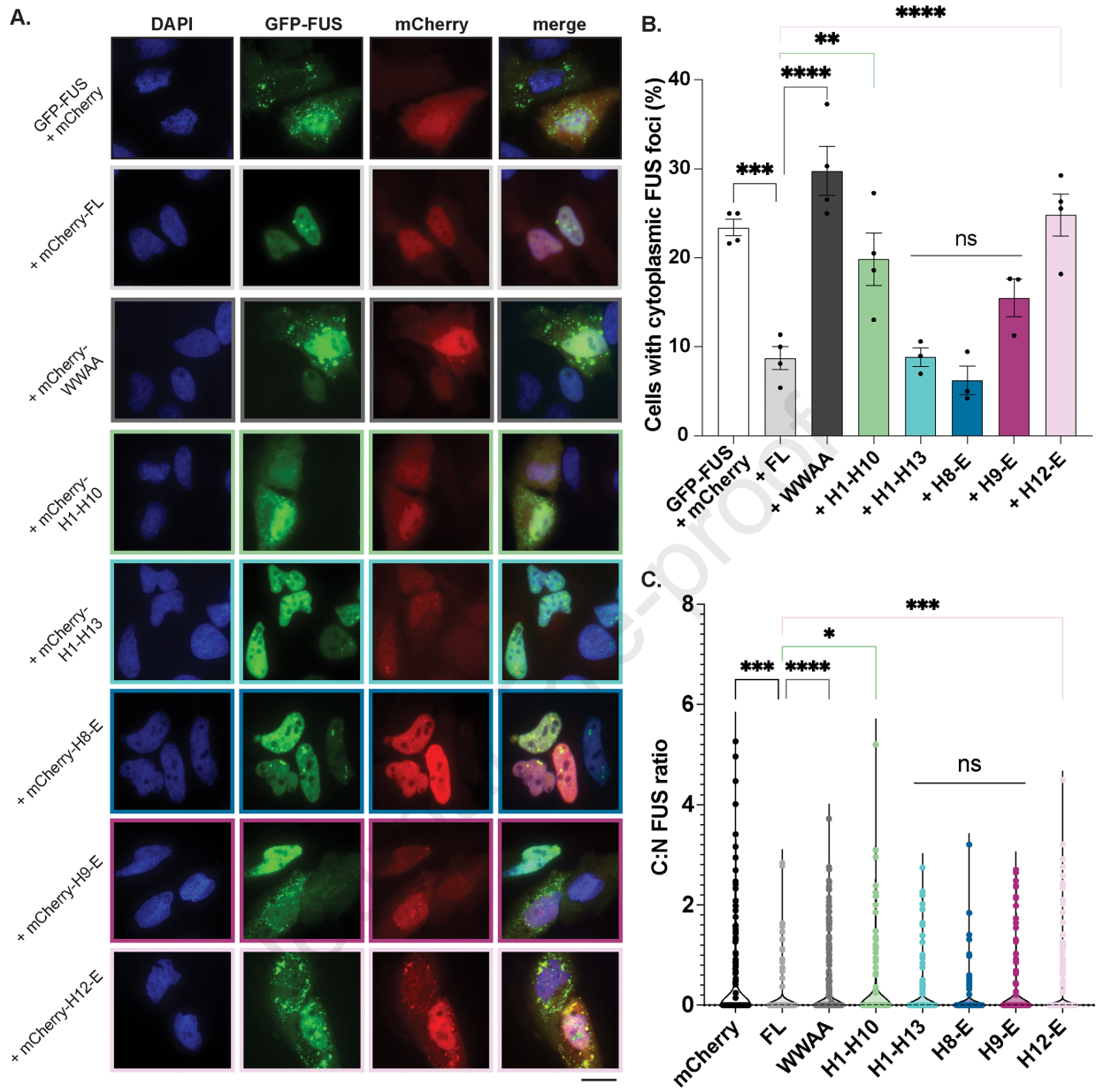


Figure 7

Declarations of interests

C.M.F., K.R., A.L., and S.M. have no interests to declare. J.S. is a consultant for Dewpoint Therapeutics, ADRx, Neumora, and Confluence Therapeutics.

Journal Pre-proof

CRedit author statement

Charlotte Fare: Conceptualization, Methodology, Validation, Formal analysis, Investigation, Resources, Data Curation, Writing - Original Draft, Writing - Review & Editing, Visualization, Supervision, Funding acquisition. **Kevin Rhine:** Conceptualization, Methodology, Validation, Formal analysis, Investigation, Resources, Data Curation, Writing - Review & Editing, Visualization, Funding acquisition. **Andrew Lam:** Conceptualization, Methodology, Validation, Investigation, Writing - Review & Editing. **Sua Myong:** Conceptualization, Methodology, Resources, Writing - Review & Editing, Supervision, Project administration, Funding acquisition. **James Shorter:** Conceptualization, Methodology, Resources, Writing - Original Draft, Writing - Review & Editing, Visualization, Supervision, Project administration, Funding acquisition.