



Generation and biobanking of patient-derived glioblastoma organoids and their application in CAR T cell testing

Fadi Jacob^{1,2,3} , Guo-li Ming^{1,4,5,6} and Hongjun Song^{1,4,5,7,8}

Glioblastoma tumors exhibit extensive inter- and intratumoral heterogeneity, which has contributed to the poor outcomes of numerous clinical trials and continues to complicate the development of effective therapeutic strategies. Most in vitro models do not preserve the cellular and mutational diversity of parent tumors and often require a lengthy generation time with variable efficiency. Here, we describe detailed procedures for generating glioblastoma organoids (GBOs) from surgically resected patient tumor tissue using a chemically defined medium without cell dissociation. By preserving cell-cell interactions and minimizing clonal selection, GBOs maintain the cellular heterogeneity of parent tumors. We include details of how to passage and cryopreserve GBOs for continued use, biobanking and long-term recovery. In addition, we describe procedures for investigating patient-specific responses to immunotherapies by co-culturing GBOs with chimeric antigen receptor (CAR) T cells. It takes ~2–4 weeks to generate GBOs and 5–7 d to perform CAR T cell co-culture using this protocol. Competence with human cell culture, tissue processing, immunohistology and microscopy is required for optimal results.

Introduction

Tumor organoids are 3D tissues generated directly from patient tumor cells that recapitulate features of their parent tumors. Recently, tumor organoids have emerged as a valuable model for many cancers, including bladder, breast, gastrointestinal, liver, ovarian, pancreatic, prostate and rectal cancers^{1–8}. These organoid models and biobanks have furthered our understanding of tumor biology and shown promise for testing new therapeutic strategies^{9,10}. Tumor organoids can be co-cultured with other cell types, such as stromal, endothelial and immune cells, to further expand their applicability. Co-culture of tumor organoids with chimeric antigen receptor T (CAR T) cells, which are T cells genetically engineered to express surface proteins that recognize specific antigens on tumor cells, is a useful technique to access CAR T cell antigen specificity and tumor-killing efficacy.

We recently developed a protocol to generate glioblastoma organoids (GBOs) from surgically resected patient glioblastoma tissue with minimal perturbation¹¹. We showed that GBOs recapitulate the heterogeneity of their parent tumors as evidenced by immunohistology, bulk and single-cell transcriptomics and mutational analyses revealing the maintenance of diverse cell populations and their gene expression and mutation profiles. GBOs exhibit rapid, aggressive infiltration of tumor cells when transplanted into adult rodent brains, a defining feature of human glioblastoma. We demonstrated the utility of GBOs to test personalized therapies by correlating GBO mutation profiles with responses to specific drugs and developed methods to co-culture GBOs with CAR T cells to test killing efficacy and target specificity¹¹. To date, generation of GBOs has been replicated for >60 tumor samples, and 2173-BBz CAR T cells were efficacious in three independent experiments and multiple different GBO samples. To better enable adoption of our methods in other laboratories, here, we describe detailed procedures for generating, culturing, passaging, cryopreserving and thawing GBOs

¹Department of Neuroscience and Mahoney Institute for Neurosciences, Perelman School of Medicine, University of Pennsylvania, Philadelphia, PA, USA. ²The Solomon H. Snyder Department of Neuroscience, Johns Hopkins University School of Medicine, Baltimore, MD, USA. ³Medical Scientist Training Program, Johns Hopkins University School of Medicine, Baltimore, MD, USA. ⁴Institute for Regenerative Medicine, Perelman School of Medicine, University of Pennsylvania, Philadelphia, PA, USA. ⁵Department of Cell and Developmental Biology, Perelman School of Medicine, University of Pennsylvania, Philadelphia, PA, USA. ⁶Department of Psychiatry, Perelman School of Medicine, University of Pennsylvania, Philadelphia, PA, USA. ⁷Glioblastoma Translational Center of Excellence, The Abramson Cancer Center, University of Pennsylvania, Philadelphia, PA, USA. ⁸The Epigenetics Institute, Perelman School of Medicine, University of Pennsylvania, Philadelphia, PA, USA.

✉e-mail: fjacob2@jhmi.edu; gming@pennmedicine.upenn.edu; shongjun@pennmedicine.upenn.edu

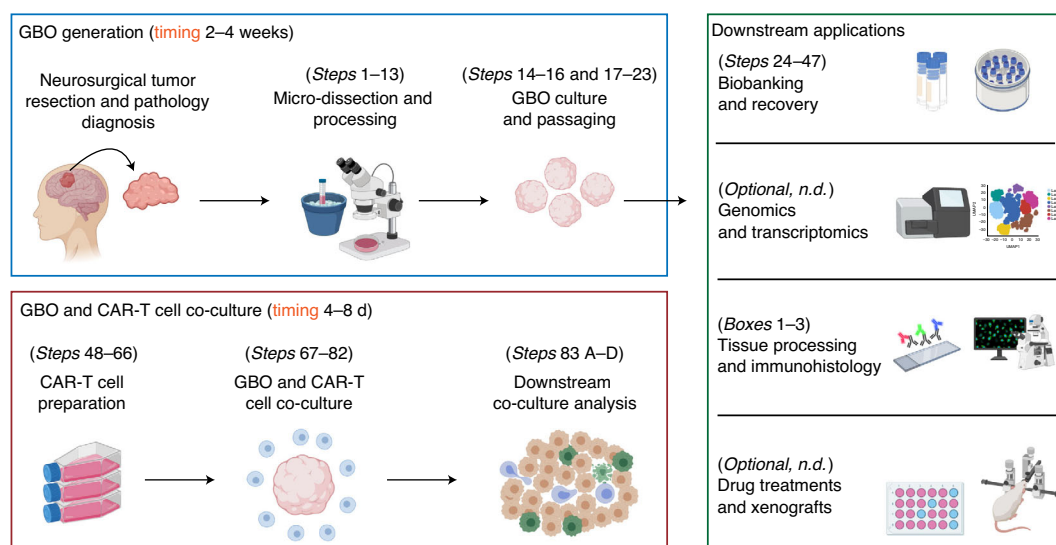


Fig. 1 | Overview of the procedures to generate GBOs from resected tumor tissue and to co-culture GBOs with CAR T cells. Diagram outlining the major steps to generate GBOs from resected tumor tissue with downstream applications and to prepare and co-culture CAR T cells with GBOs. Procedures for genomic and transcriptomic analyses, drug treatments and xenografts are not described (n.d.) in this protocol; refer to Jacob et al.¹¹ for methods and sample data for these procedures. Panel created with images from www.biorender.com.

(Figs. 1–3). We include optimized protocols for processing tumor tissue and GBOs for downstream analyses (Box 1), performing immunohistology (Box 2, Fig. 4) and detecting hypoxia gradients and actively proliferating cells in GBOs (Box 3, Fig. 5). Furthermore, we describe procedures for co-culturing GBOs with CAR T cells and analyzing target antigen loss, tumor cell killing and T cell invasion, proliferation and cytokine secretion (Fig. 6).

Development of GBO culture and biobanking methodology

An ideal *in vitro* model for glioblastoma would maintain cellular diversity, preserve native cell-cell interactions, recapitulate defining histological characteristics and maintain the transcriptomes and mutation profiles of parent tumors. To be useful for personalized medicine approaches, the model would need a quick generation time with high fidelity for success and be scalable to test potential therapeutics. This would require maintenance of patient-derived glioblastoma tissue in culture with minimal perturbation.

To further progress toward this goal, we opted to directly culture micro-dissected tumor pieces without cell dissociation to preserve cell-cell interactions and minimize clonal selection. We start from resected patient tumor tissue that can be sampled from different tumor foci or subdivided into regional samples to analyze intratumoral heterogeneity. Through testing of many medium formulations, we learned that tumor pieces do not require basic fibroblast growth factor (bFGF), epidermal growth factor (EGF), serum or added extracellular matrix such as Matrigel to survive, form organoids and proliferate at rates similar to parent tumors¹¹. We thus optimized a chemically defined medium that contains basic nutrients and components needed to support glial cell health with few exogenous factors to minimize clonal selection induced by growth factors and decrease potential treatment confounds. This resulted in an optimized version of our medium used to maintain human brain organoid cultures^{12,13}. We culture tumor pieces on an orbital shaker to increase oxygen and nutrient diffusion and aid the formation of spherical organoids. Because of these conditions, GBOs can grow quite large, recapitulating the hypoxic gradients and cell distributions found in glioblastoma tumors¹¹. GBOs are generated in 2–4 weeks, making them useful for therapeutic testing on a clinically relevant timescale. To extend the usefulness of GBOs, we also developed optimized procedures to cryopreserve 3D tissue that has been traditionally difficult to biobank owing to poor penetration of dimethyl sulfoxide (DMSO) into cells within the core. We address this problem by cutting GBOs into small pieces and pre-incubating them in DMSO-containing freezing medium to allow complete perfusion before freezing. We also incubate GBO pieces with Y-27632 (ROCK inhibitor) before freezing and during thawing to help inhibit cell death^{14–17}. This methodology has enabled the establishment of a living biobank of GBOs for future research.

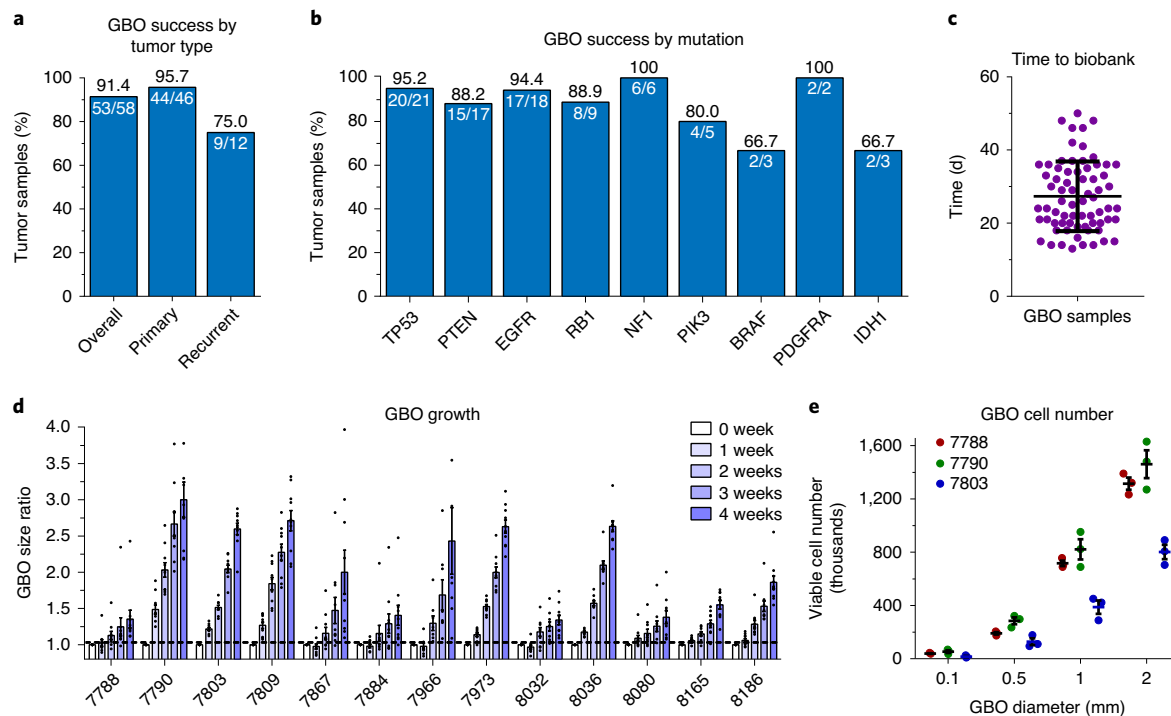


Fig. 2 | GBO success rate and growth. **a** and **b**, Quantification of the success rate for generating GBOs from primary and recurrent/residual tumor tissue (**a**) and for generating GBOs from tumors containing mutations commonly found in glioblastomas⁵⁴ (**b**). The GBO success percentage is indicated in black text above each bar, and the fraction of successful samples over the total samples is indicated in white text below each bar. Data are plotted from information in Supplementary Table 1 from Jacob et al.¹¹. **c**, Quantification of the time from the initial tumor resection to establishment of a GBO biobank for 70 distinct GBO samples. Individual values are plotted with the mean \pm s.d. **d**, Quantification of GBO growth over time by calculating the ratio of the measured 2D area at each time point to the 2D area at time point 0 for individual GBOs recovered from the biobank. Values represent mean \pm s.e.m. ($n = 10$ GBOs per sample). Data are replotted from Fig. 2f in Jacob et al.¹¹. **e**, Quantification of the viable cell number within GBOs generated from three separate tumors at different GBO diameters. Values represent data from individual GBOs with the mean \pm s.e.m. ($n = 3$ GBOs per sample). Graphs and mean, s.e.m. and s.d. are calculated using Prism.

Development of CAR T cell co-culture methodology

Although CAR T cell therapy has shown success in several blood cancers¹⁸, it has not been as effective in solid tumors¹⁹. Current in vitro models for solid tumors often lack cellular heterogeneity and do not maintain the mutations that lead to altered surface antigens, such as the epidermal growth factor receptor (EGFR) variant 3 (EGFRvIII) variant in glioblastomas, which has shown unclear efficacy in clinical trials using CAR T cells that recognize EGFRvIII specifically^{20,21}. Because of these constraints, experiments to test the efficacy of CAR T cells have often relied on overexpression of target antigens in tumor cell lines, which may not recapitulate the endogenous condition²². Because of their 3D architecture, tumor organoids have recently been used as a model to test CAR T cell killing²³. To mimic CAR T cell invasion into solid tumors, such as glioblastoma, we developed an optimized method to co-culture CAR T cells with GBOs. Because GBOs maintain the cellular heterogeneity and cell-cell interactions of parent tumors, they better recapitulate the native tumor environment compared to adherent or suspension cell models. GBOs also maintain the endogenous expression of mutant proteins, such as EGFRvIII, which has been traditionally difficult to maintain in cell lines. We used the recently developed 2173-BBz anti-EGFRvIII CAR T cell that specifically binds mutant EGFRvIII commonly found in glioblastomas²¹ to show the usefulness of GBOs to test the efficacy and specificity of CAR T cells when co-cultured. We optimized a ratio of CAR T cells to tumor cells to model and observe CAR T cell infiltration and proliferation, target antigen loss and tumor cell killing on a clinically relevant timescale. Using these methods, the efficacy and specificity of engineered CAR T cells can be tested in vitro before initiating therapy in patients to stratify patients for clinical trials and to better predict therapeutic responses.

Applications of GBOs to study glioblastoma biology and test therapeutics

Our protocol provides a 3D in vitro model for glioblastoma that is generated directly from resected patient tumor tissue with minimal perturbation and quick generation time. Our model allows one to

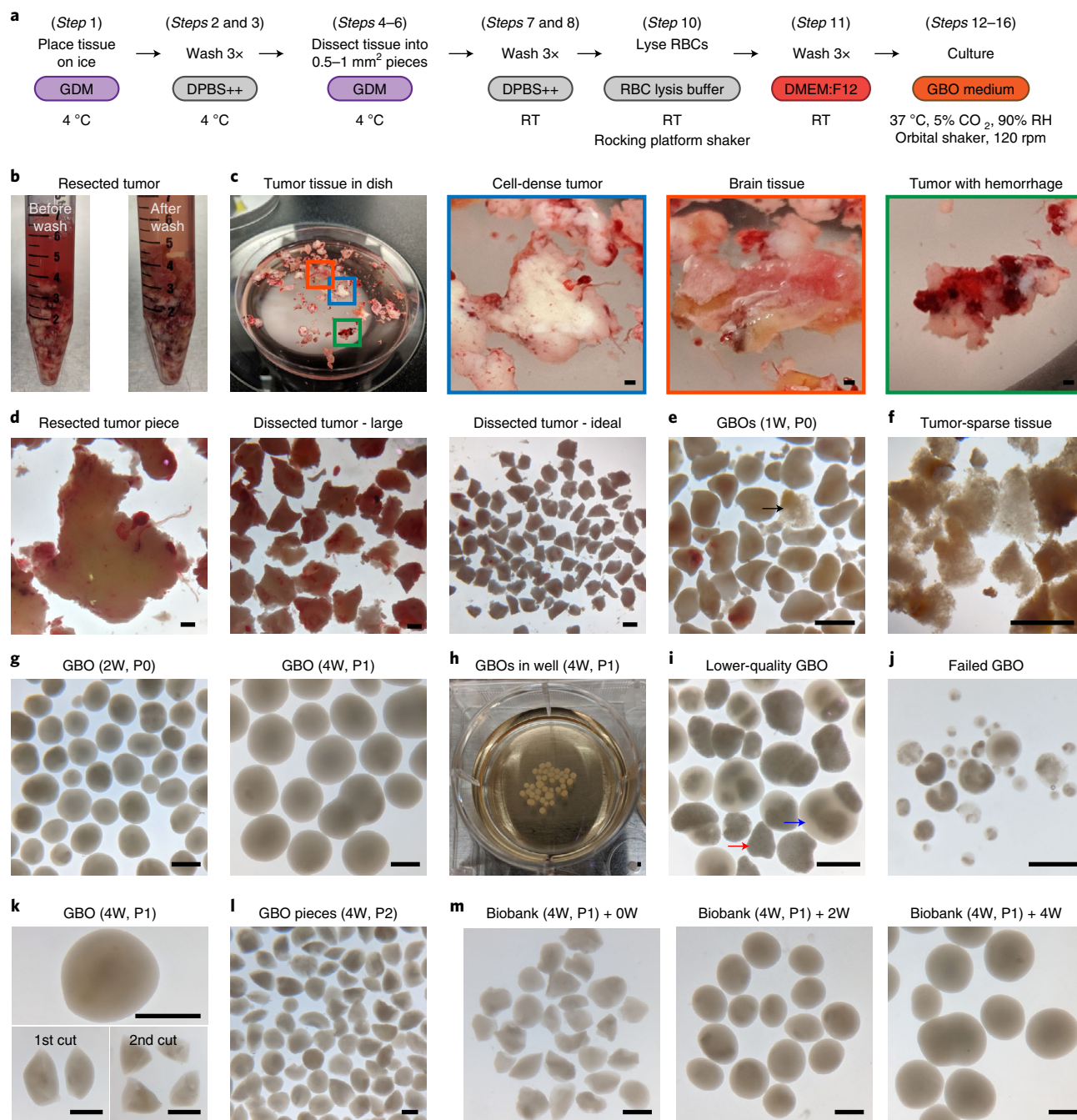


Fig. 3 | Establishment and maintenance of GBO culture. **a**, Diagram outlining the steps to process glioblastoma tissue into tumor pieces for GBO culture with the medium and culture conditions indicated below each step. GDM, glioblastoma dissection medium; RBC, red blood cell; RT, room temperature; RH, relative humidity. **b**, Sample bright-field images of conical tubes containing example glioblastoma tissue received from surgical resection before washing (left) and after washing and adding glioblastoma dissection medium (right). **c**, Sample bright-field image of resected tumor tissue in a glass dissection dish (left) with higher-magnification images of boxed regions on the right showing examples of cell-dense tumor pieces (blue box), brain tissue (red box) and tumor tissue with substantial hemorrhage (green box). Scale bars, 1 mm. **d**, Sample bright-field images of a cell-dense resected tumor piece (left), large dissected tumor pieces (middle) and ideally sized dissected tumor pieces (right) after micro-dissection with fine-spring dissection scissors. Scale bars, 1 mm. **e–m**, Sample bright-field images of tumor pieces in culture after 1 week (**e**; the black arrow indicates tumor-sparse tissue), tumor-sparse tissue in culture after 1 week that should be removed (**f**), GBOs after 2 weeks (**g**; left) and 4 weeks (**g**; right) in culture, GBOs in a 6-well culture plate after 4 weeks of culture showing the approximate GBO size when ready to passage (**h**), lower-quality GBOs after 4 weeks in culture that may be removed (**i**; the red arrow indicates tumor-sparse necrotic tissue, and the blue arrow indicates cell-dense tumor tissue growing outward from tumor-sparse necrotic tissue), example of failed GBOs after 4 weeks in culture (**j**), a whole GBO after 4 weeks in culture before passaging (**k**; top) and after first (**k**; bottom left) and second (**k**; bottom right) bisection, GBO pieces immediately after passaging (**l**) and GBOs that were cryopreserved after 4 weeks in culture and thawed from the biobank (**m**; left) and cultured for 2 weeks (**m**; middle) and 4 weeks (**m**; right). The age in weeks (W) and the passage number (P) of the GBOs are indicated in parentheses after each label. Scale bars, 1 mm. Images were taken using Zen 2 Blue software.

Box 1 | Processing glioblastoma tissue and GBOs for downstream analyses ● Timing 2 d

Procedure

- 1 Collect tumor pieces or GBOs into 15-ml conical tubes using a P1000 pipette with a wide-bore pipette tip.
- 2 Carefully aspirate the medium above sunken tumor pieces or GBOs.
- 3 Add 10 ml of 4% (vol/vol) formaldehyde solution to each 15-ml conical tube.
- 4 Incubate on a rocking platform shaker at ~5 tilts/min at room temperature for 30 min.
▲ CRITICAL STEP Proper fixation time is critical for preserving the tissue for long-term storage while maintaining the protein epitopes that primary antibodies recognize. Fixation times that exceed 30 min at room temperature may mask epitopes and lead to suboptimal immunohistology results.
- 5 Carefully aspirate the 4% (vol/vol) formaldehyde solution above sunken tumor pieces or GBOs.
- 6 Wash the tumor pieces or GBOs three times with 10 ml of DPBS++ by letting tumor pieces or GBOs sink to the bottom of the conical tube before carefully aspirating the supernatant.
- 7 Cryoprotect the tissue by adding 10 ml of 30% (wt/vol) sucrose solution to each 15-ml conical tube and incubating upright at 4 °C overnight.
▲ CRITICAL STEP Tumor pieces or GBOs must sink to the bottom of the tube before proceeding to the next step. This ensures that the tissue has been fully perfused with 30% (wt/vol) sucrose.
- 8 Pre-label plastic cryomolds with sample identifying information using an alcohol-resistant marker.
- 9 Transfer tumor pieces or GBOs to plastic cryomolds using a P1000 pipette with a wide-bore pipette tip.
▲ CRITICAL STEP Tumor pieces and GBOs tend to stick to the inner surface of pipette tips after incubation in 30% (wt/vol) sucrose. Keep the pipette vertical while aspirating and dispensing tissue to minimize sticking.
- 10 Remove excess 30% (wt/vol) sucrose solution from the cryomold by carefully aspirating with a P200 pipette.
▲ CRITICAL STEP Remove as much 30% (wt/vol) sucrose solution as possible to ensure optimal freezing without ice crystal formation.
- 11 Add tissue-freezing medium to completely fill the plastic cryomold.
▲ CRITICAL STEP Avoid bubbles in the tissue-freezing medium, as they create holes after freezing that can interfere with cryo-sectioning.
- 12 Carefully place the tumor pieces or GBOs in the same horizontal plane in the center of the cryomold using a P200 pipette tip. This helps ensure that each cryosection contains tissue from each tumor piece or GBO.
▲ CRITICAL STEP Avoid stabbing or tearing tumor pieces or GBOs with the P200 pipette tip. Use the P200 pipette tip to manipulate the tissue-freezing medium surrounding the GBOs, taking advantage of the viscosity to move them.
- 13 Snap freeze the cryomolds by placing in isopropanol cooled by dry ice.
! CAUTION Dry ice and isopropanol cooled with dry ice are very cold. Use appropriate personal protective equipment to avoid injury.
- 14 Dab off excess isopropanol onto a paper towel and place frozen cryomolds in a –80 °C freezer for long term storage.
■ PAUSE POINT Frozen cryomolds can be stored at –80 °C indefinitely.
- 15 Place pre-labeled charged microscope slides and frozen cryomolds inside a tissue cryostat set to –20 °C and incubate for 15 min.
▲ CRITICAL STEP Letting frozen cryomolds equilibrate to –20 °C ensures smoother cutting.
- 16 Cut 25-μm sections and melt onto charged slides.
- 17 Dry slides for 30 min on a 55 °C hotplate or overnight at room temperature protected from light to promote tissue adhesion to the slide.
- 18 Put microscope slides into a slide box and place in a –20 °C freezer for long-term storage.
■ PAUSE POINT Frozen tissue slides can be stored at –20 °C for >6 months. Consider storing at –80 °C for longer time periods.
- 19 (Optional) To sample tissue for RNA sequencing, place three to five tumor pieces or GBOs into a microcentrifuge tube using a P1000 pipette with a wide-bore pipette tip, centrifuge at 500g for 5 min to pellet, aspirate any remaining medium and snap-freeze the microcentrifuge tubes by placing in isopropanol cooled by dry ice. Store microcentrifuge tubes containing tissue in a –80 °C freezer until ready for processing.
▲ CRITICAL STEP Tumor pieces or GBOs should always be collected and analyzed in triplicates to account for variations in sampling. Individual GBOs may be sampled to analyze heterogeneity between GBOs.
■ PAUSE POINT Frozen microcentrifuge tubes containing tissue can be stored at –80 °C indefinitely.

study glioblastoma biology in real time and provides a platform to test targeted therapeutics, such as radiation, drugs or CAR T cells for personalized medicine¹¹. The maintenance of parent tumor cellular heterogeneity and key driver mutations makes our GBO model useful for studying glioblastoma progenitor subtypes and lineage hierarchies. The presence of different tumor cell types or cellular states can be studied by marker immunohistology and single-cell RNA sequencing, analogous to studies carried out on patient tissue^{24,25}. Single-cell sequencing can be used to identify putative cancer stem and progenitor cells and infer their lineage trajectories. GBOs are readily amenable to treatment with nucleoside analogs (e.g., 5-ethynyl-2'-deoxyuridine (EdU)) or viruses to label cell populations (Fig. 5c–f). EdU pulse-chase experiments can be used to study population lineage dynamics¹¹, and lentiviruses and retroviruses can be used to label progenitors and trace their progeny by permanent fluorescent labeling or RNA barcoding²⁶. GBOs may also be subjected to genetic manipulations, such as overexpression, shRNA/siRNA knockdowns and CRISPR-mediated knockouts to study genetic contributions to the disease. The dynamic behavior of glioblastoma cells, such as cell division and migration, could potentially be studied by two-photon or confocal-based live imaging of fluorescently labeled tumor cells. In addition, cell types and mechanisms underlying tumor cell infiltration into the surrounding brain tissue can be studied by orthotopic xenograft of GBOs into rodent brains¹¹.

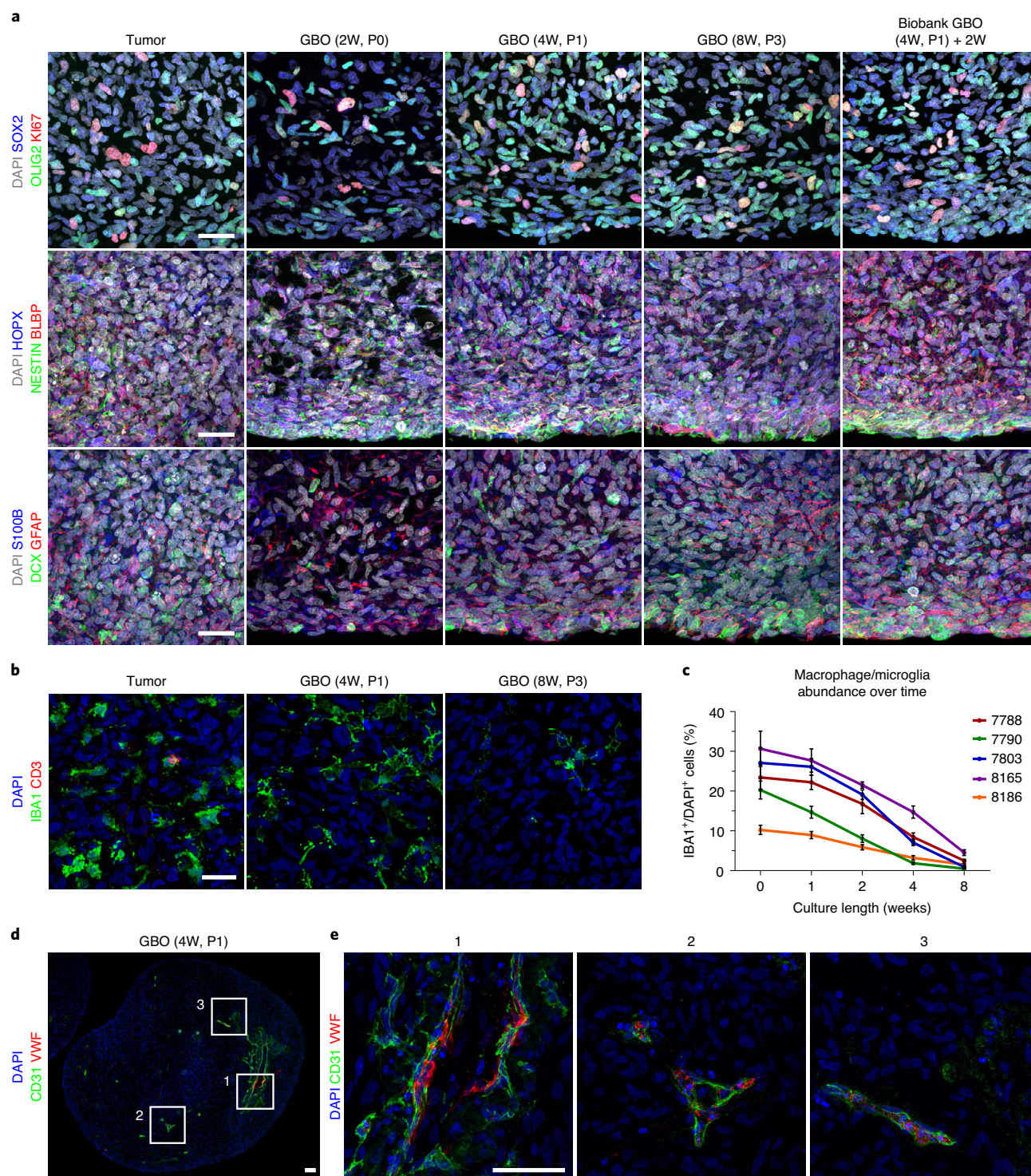
Our procedure for generating GBOs is advantageous because GBOs can be generated in as little as 2–4 weeks after surgical resection. This quick generation time allows time for targeted therapies to be

Box 2 | Immunofluorescence staining of glioblastoma tumors and organoids ● **Timing 2 d****Procedure**

- 1 Remove tissue slides from freezer storage and incubate on a hotplate set to 55 °C for 30 min to dry.
▲ CRITICAL STEP Completely drying the tissue on a hotplate improves tissue adherence to the slide during washes and antibody incubation steps.
- 2 Outline tissue sections with a hydrophobic barrier pen and let dry for 5 min.
▲ CRITICAL STEP Avoid getting hydrophobic barrier pen ink on the tissue sections. The ink has substantial autofluorescence, and its hydrophobicity prevents antibody binding.
- 3 Prepare the immunohistology moisture chamber by adding a thin layer of ultra-pure water to the bottom of an open slide staining chamber.
▲ CRITICAL STEP This helps limit the evaporation of solution on the tissue slides during incubations when the chamber is closed.
- 4 Place tissue slides horizontally onto the fitted slots on the bottom of the immunohistology moisture chamber.
- 5 Wash tissue sections three times for 5 min with TBST by gently pipetting ~200 µl of TBST onto each tissue section and carefully aspirating the wash buffer between washes.
- 6 Incubate each tissue section with ~100 µl of blocking and permeabilization buffer for 1 h at room temperature.
- 7 Aspirate blocking and permeabilization buffer and incubate each tissue section with ~100 µl of primary antibodies diluted in antibody dilution buffer overnight at 4 °C. See Table 1 for a list of useful primary antibodies and their suggested dilutions. Dilutions for other antibodies may require optimization to achieve the best signal to noise.
▲ CRITICAL STEP Only use antibody combinations with non-overlapping antibody species to avoid cross-contamination of signal. For example, use an antibody raised in mouse, rabbit or goat together, but never two antibodies raised in the same species together.
- ▲ CRITICAL STEP** 100 µl of antibody solution is generally enough to cover each tissue section. Adding too much solution to each tissue section may break the hydrophobic barrier and spill over to adjacent tissue sections. This will combine antibodies and render the experiment useless.
- 8 Aspirate primary antibody solution and wash tissue sections three times quickly and three times for 5 min with TBST, carefully aspirating the wash buffer between washes.
- 9 Incubate each tissue section with ~100 µl of secondary antibodies and DAPI diluted in antibody dilution buffer for 1.5 h at room temperature. Secondary antibodies and DAPI are generally used at 1:500 dilution.
- 10 Aspirate the secondary antibody solution and wash tissue sections three times quickly and three times for 5 min with TBST, carefully aspirating the wash buffer between washes.
- 11 Wash tissue sections once with TBS for 5 min to remove detergent.
- 12 Incubate tissue sections with 1× autofluorescence quenching solution for 1 min.
▲ CRITICAL STEP Tumor tissue and GBOs contain blood components and lipid accumulations that have high autofluorescence that interferes with assessing the true immunofluorescence signal. Incubating tissue sections with autofluorescence-quenching solution is critical to block this autofluorescence. Tissue sections may turn a dark blue to black color, but antibody fluorescence is not affected.
- 13 Aspirate autofluorescence-quenching solution and wash three times for 5 min with TBS.
▲ CRITICAL STEP Do not wash with buffers containing detergents, as they will remove autofluorescence blocker that is bound to blood components and lipid accumulations.
- 14 Mount slides using ~50–100 µl of antifade mounting medium per slide and glass coverslips.
▲ CRITICAL STEP Avoid introducing bubbles when placing coverslips, as they will interfere with imaging if located on top of tissue sections.
- 15 Dry slides overnight protected from light.
- 16 Seal the coverslips to the slides by coating the edges with clear nail polish and let dry for 1 h.
- 17 Proceed to imaging with a confocal microscope (Fig. 4a) or store slides at 4 °C.
▲ CRITICAL STEP While detailed discussion on microscopy technique is beyond the scope of this protocol, we emphasize optimizing microscope settings to obtain high-resolution images with good signal to noise. Use a combination of secondary fluorophores with emission spectra that do not overlap substantially and avoid capturing overexposed images. For more advice on optimizing confocal microscopy, refer to Jonkman et al.⁴⁸.
- PAUSE POINT** Immunofluorescent slides can generally be stored at 4 °C for ≥1 month. The fluorescence signal may decrease with prolonged storage.

tested in vitro before the initiation of treatment in patients. Data gathered from immunohistology, transcriptomics and genomics could therefore inform the design of drug panels for which efficacy would be tested in GBOs. By maintaining cultures after drug and/or radiation treatment, GBOs provide a system to study which tumor populations develop resistance and expand after treatment. Continued culture after drug withdrawal may provide insights into the cell populations that contribute to tumor recurrence. The efficacy of CAR T cells that recognize different target antigens can be tested in isolation or in combination by co-culture with GBOs. This would enable the development of new therapies for clinical trials. Our protocol for CAR T cell co-culture can also be applied to test the effects of CAR T cells on other tumor organoids, although the conditions may need to be optimized for each tumor type. GBOs also offer a valuable resource to identify novel targetable surface antigens by incubation with naïve peripheral T cells, similar to the types of studies that have been reported for organoids derived from patients with colorectal cancer and non-small-cell lung cancer^{27,28}.

Our GBO model system maintains tumor-associated macrophages/microglia, endothelial cells and other features of the tumor microenvironment, such as hypoxia gradients¹¹. This provides a unique opportunity to study the interaction between tumor and non-tumor cells and the influence of hypoxia on cell behavior and localization and how this may lead to treatment resistance. Importantly, our procedure to generate organoids directly from micro-dissected tumor pieces with minimal



perturbation could be applied to other adult brain tumors, pediatric brain tumors and possibly tumors from other tissues to better preserve native cell-cell interactions and aspects of the tumor microenvironment, although the conditions may need optimization.

Comparison with other human glioblastoma model systems

Several model systems, including adherent and suspension cell lines, patient-derived xenografts (PDXs) and cerebral organoids have contributed greatly to our understanding of glioblastoma

◀ **Fig. 4 | Immunofluorescence characterization of GBOs and parent tumors.** **a**, Sample confocal images of fluorescent immunohistology for different markers, showing the maintenance of parent tumor marker expression, cellular composition and proliferation in cultured GBOs at different ages and GBOs thawed from the biobank and cultured for 2 weeks for one patient. Representative images are based on the analysis of five tumor pieces or GBOs per timepoint. The age in weeks (W) and the passage number (P) of the GBOs are indicated in parentheses after each label. Fluorescent immunohistology and marker quantification for several GBO samples at multiple time points can be found in Fig. 2A–B, S1A–B and S2D of Jacob et al.¹¹. Scale bars, 25 μ m. **b**, Sample confocal images of fluorescent immunohistology for macrophage/microglia marker IBA1 and T cell marker CD3 in the parent tumor and corresponding GBOs at 4 and 8 weeks, showing the maintenance, but gradual loss of immune cells. Representative images are based on the analysis of five tumor pieces or GBOs per timepoint. Scale bar, 25 μ m. **c**, Quantification of the percentage of IBA1⁺/DAPI⁺ macrophage/microglia cells in GBOs at different ages for five GBO samples. Values represent mean \pm s.e.m. ($n = 5$ GBOs per sample and timepoint with 3 images per GBO). The graph was plotted and the mean and SEM were calculated using Prism. **d**, Sample confocal image of fluorescent immunohistology for endothelial cell markers CD31 and von Willebrand factor (VWF) in a GBO at 4 weeks, showing maintenance of some vasculature in GBOs. The representative image is based on the analysis of five GBOs. Scale bar, 50 μ m. **e**, Higher-magnification confocal images of boxed regions in **d** with fluorescent immunohistology for CD31 and VWF, showing variations in vessel morphology. Scale bar, 50 μ m.

pathobiology, but have their limitations. Traditional in vitro monolayer and tumor sphere cultures offer a readily expandable and fairly uniform population of tumor cells for experimentation, but fail to recapitulate the heterogeneity of their parent tumors because the procedures to generate them involve single-cell dissociation and growth in medium containing serum or exogenous bFGF and EGF. These conditions promote clonal selection and expansion over serial passages, which is not favorable for maintaining the cellular diversity of parent tumors. These cultures can also require a substantial amount of time to establish and have limited generation fidelity^{29,30}. PDX models are thought to better retain the cellular diversity of glioblastomas by providing an in vivo environment for tumor growth through direct injection of dissociated tumor cells into the mouse flank or brain. However, PDX models are restricted by variable engraftment efficiency, interactions with animal cells, limited throughput and long latency in tumor generation, which limit their usefulness for testing personalized therapies³¹. Cerebral organoids, self-organizing 3D cultures that resemble the developing brain³², have been genetically altered to develop oncogenic properties or co-cultured with tumor spheres to model tumor cell invasion^{33,34}. While cerebral organoids are useful, readily manipulatable models, they represent the fetal brain and lack important non-neural cell types, such as immune and endothelial cells. They therefore do not recapitulate the cellular diversity or architecture of glioblastoma tumors.

Previously described patient-derived GBOs were derived by culture of tumor pieces in Matrigel and were further grown in a medium containing bFGF and EGF, preserving cellular heterogeneity better than tumor sphere cultures³⁵. These GBOs were shown to contain heterogeneous stem cells and recapitulate hypoxic gradients. However, the ability of this GBO system to fully recapitulate features of the parent tumors and hence serve as a reliable platform for therapeutic testing is unclear. Other organoid models use bio-printing of glioma cells and an extracellular matrix on a chip to enable high-throughput drug testing, but the ability of these organoids to recapitulate the cellular heterogeneity and organization of tumors is uncertain³⁶.

Perhaps the closest model systems to GBOs are glioblastoma explant and slice cultures that are established without any tissue dissociation. Tumor tissue is maintained as chunks or slices with minimal perturbation to preserve the cellular composition and local architecture of tumors^{37,38}. These models have been useful for preserving local vasculature and immune cells, studying responses to drug therapies and visualizing cell division and migration soon after tumor resection but are limited by short-term survival and poor expandability^{37,39,40}. Cell death that occurs during initial processing may also complicate analysis.

By contrast, GBOs derived using our methodology can be cultured for weeks to months after resection and biobanked for future studies. This allows ample time for genetic, transcriptomic and immunohistochemical analyses that potentially improve selection of chemotherapeutic drugs or CAR T immunotherapies for testing. Together, in contrast to other human glioblastoma models, our procedure to generate GBOs preserves the cellular heterogeneity of parent tumors by avoiding cell dissociation and the addition of exogenous bFGF, EGF and extracellular matrix, which can cause differential cell survival and clonal selection. GBOs are generated in 2–4 weeks with high fidelity, preserve the local cytoarchitecture and cell-cell interactions of resected glioblastoma tissue and can be expanded and biobanked for future studies¹¹.

Box 3 | Detection and quantification of hypoxia gradients and actively proliferating cells in GBOs ● Timing 2–3 d

Detection of hypoxia gradients and actively proliferating cells in GBOs is based on labeling live GBOs with pimonidazole-HCl and EdU, respectively, followed by tissue processing (Box 1) and detection with immunohistochemistry (Box 2).

Procedure

- 1 Follow option A for detection of hypoxia gradients or option B for detection of actively proliferating cells.
 - (A) **Detection of hypoxia gradients in GBOs**
 - (i) Prepare the GBO medium containing 200 μ M pimonidazole-HCl and equilibrate 4 ml per well in a 6-well plate for 15 min in a 37 °C, 5% CO₂, 90% relative humidity sterile incubator.

▲ **CRITICAL STEP** Equilibrating the medium in the incubator is critical to avoid having sudden temperature and pH changes affect the results.
 - (ii) Carefully add GBOs to equilibrated medium and culture for 3 h in a 37 °C, 5% CO₂, 90% relative humidity sterile incubator.
 - (iii) Process GBOs for immunohistochemistry as described in Box 1.
 - (iv) Perform immunofluorescence staining of tissue sections as described in Box 2 using an anti-pimonidazole primary antibody (Fig. 5a).
 - (B) **Detection of actively proliferating cells in GBOs**

! **CAUTION** EdU is a nucleotide analog that incorporates into newly synthesized DNA. Use appropriate personal protective equipment to avoid direct contact with EdU solutions.

 - (i) Prepare GBO medium containing 1 μ M EdU and equilibrate 4 ml per well in a 6-well plate for 15 min in a 37 °C, 5% CO₂, 90% relative humidity sterile incubator.

▲ **CRITICAL STEP** Equilibrating the medium in the incubator is critical to avoid having sudden temperature and pH changes affect the results.
 - (ii) Carefully add GBOs to equilibrated medium and culture for 1 h in a 37 °C, 5% CO₂, 90% relative humidity sterile incubator to label cells in the S-phase of the cell cycle.
 - (iii) Process GBOs for immunohistochemistry as described in Box 1.
 - (iv) Perform immunofluorescence staining of tissue sections as described in Box 2 using the instructions for the Click-iT EdU detection kit (Fig. 5c,d).
 - (v) (Optional) Perform immunofluorescence staining for pVIM and PH3 as described in Box 2 to detect and analyze the morphology of tumor cells in mitosis (Fig. 5e).
- 2 Quantify hypoxia gradients (option A) and actively proliferating cells (option B) by imaging followed by image analysis using software such as Image J.
 - (A) **Quantification of hypoxia gradients**
 - (i) Image whole GBO tissue sections using a confocal microscope (Fig. 5a).

▲ **CRITICAL STEP** Take images using an appropriate laser power that does not result in overexposed regions. Quantification of fluorescent signal intensity is not accurate when regions are overexposed.
 - (ii) Using Image J, draw a line from the edge of the GBO to the center.
 - (iii) Measure the mean gray value of the Hypoxyprobe fluorescent signal as a function of distance using the plot profile function in ImageJ (Fig. 5b).

▲ **CRITICAL STEP** Take multiple measurements starting from different edges of the same GBO and multiple GBOs treated in parallel and average them to get a more representative measurement.

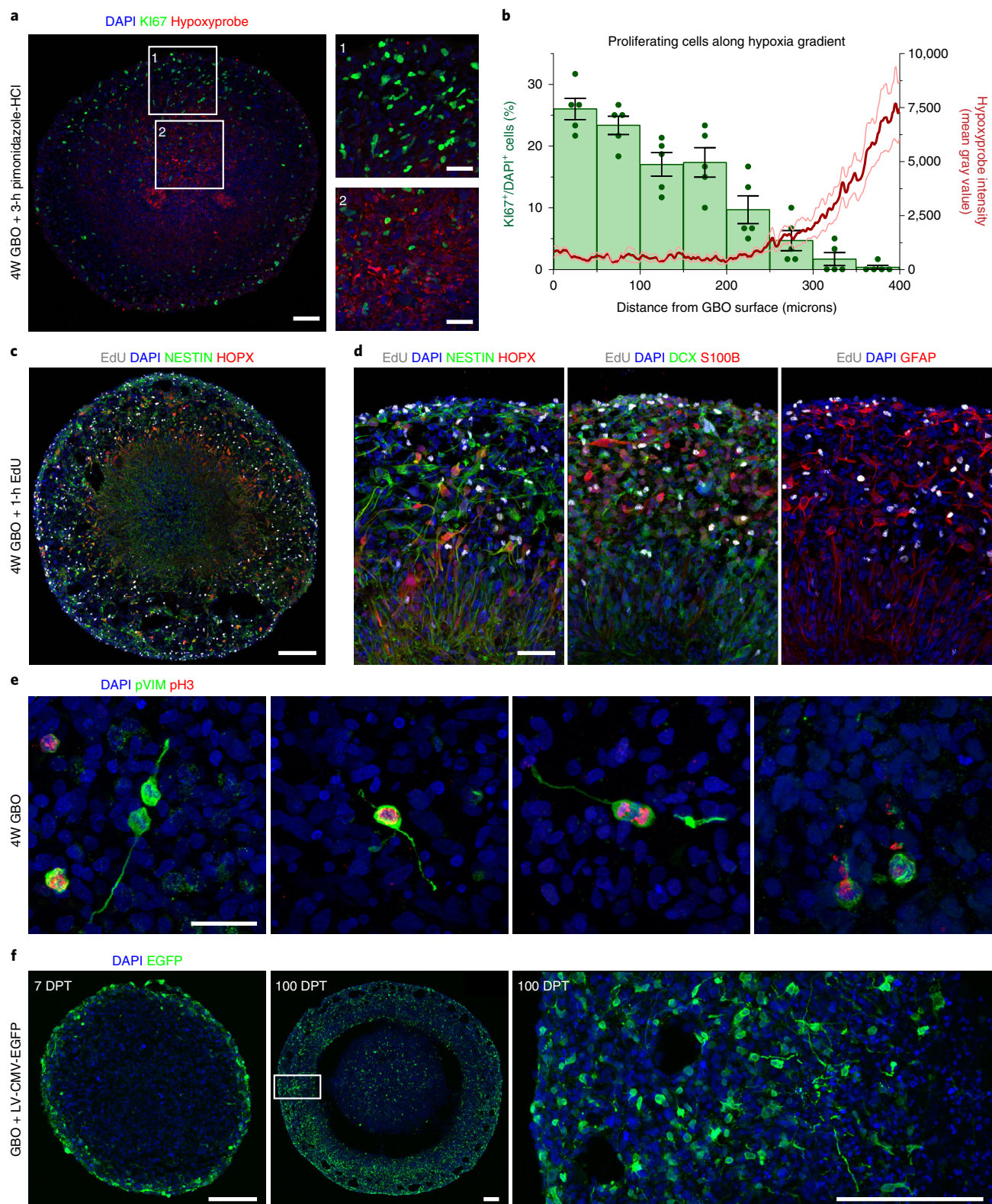
▲ **CRITICAL STEP** Other software capable of measuring fluorescent intensity can be substituted for Image J.
 - (a) (Optional) Measure the distance of each proliferating cell (labeled by Ki67 or EdU) from the surface of the GBO and plot the abundance of Ki67⁺ cells as a function of distance (Fig. 5b).
 - (B) **Quantification of actively proliferating cells**
 - (i) Image whole GBO tissue sections using a confocal microscope (Fig. 5c).
 - (ii) Using the cell counter tool in Image J, count the total number of nuclei using the DAPI immunofluorescence.

▲ **CRITICAL STEP** Other software with nuclei-counting functions or automated nuclei detection can be substituted for Image J.
 - (iii) Count the number of actively proliferating nuclei using the EdU immunofluorescence and the cell-counter tool.
 - (iv) Divide the number of EdU-positive cells by the total number of nuclei to get the fraction of actively proliferating cells.

▲ **CRITICAL STEP** Take measurements from multiple GBOs and regions within the same GBO and average them to get a more representative measurement.
 - (v) EdU detection can be combined with marker immunohistochemistry to quantify the proliferation rates of different tumor cell populations¹¹ (Fig. 5d). For this, use the total number of marker-positive cells as your denominator and EdU/marker-double-positive cells as the numerator.

Comparison with other tumor organoid methodologies

Our GBO methodology differs fundamentally from other tumor organoid methodologies. Alternative tumor organoid protocols generally involve single-cell dissociation of epithelial tumor tissue followed by embedding cells into Matrigel to support growth in a medium containing many mitogens and growth factors^{9,10}. Although this methodology has successfully generated numerous tumor organoid biobanks, dissociating solid tumors into single cells may bias against survival of sensitive cell types and destroy native cell-cell interactions. Likewise, culturing in the presence of exogenous growth factors, small molecules or serum can contribute to clonal selection and population drift away from the original tumor cell composition. The addition of these components also complicates the interpretation of results obtained after drug treatments because factors in the media could interact with the drugs being tested. The presence of an exogenous extracellular matrix that may not accurately



recapitulate the extracellular matrix composition of the native tissue can also have profound effects on cell behavior⁴¹. Use of a chemically defined medium thus facilitates reproducibility for biological studies and clinical applications.

Fig. 5 | Detection of hypoxia gradients and actively proliferating cells in GBOs. **a**, Sample confocal images of fluorescent immunohistology for pimonidazole-HCl (Hypoxyprobe) and Ki67, showing the hypoxia gradient present in a large GBO (left) with higher-magnification images of boxed regions highlighting differences in the number of Ki67⁺ cells in the GBO periphery (right-top) and core (right-bottom). The representative image is based on the analysis of five GBOs. Scale bars, 100 μ m (left) and 50 μ m (right). **b**, Quantifications of Hypoxyprobe fluorescent intensity as a function of distance from the surface to the center of GBOs (red) and Ki67⁺ cell distance from the surface of GBOs (green), showing fewer Ki67⁺ cells located within the more hypoxic regions at the center of GBOs. Values for Hypoxyprobe fluorescent intensity represent the mean \pm s.e.m. ($n = 5$ GBOs from a single sample), and values for Ki67⁺ cell distance are represented as a histogram with the mean \pm s.e.m., with individual values plotted for each 50-micron interval ($n = 5$ GBOs from a single sample). The graph was plotted and the mean and SEM were calculated using Prism. **c**, Sample confocal image of fluorescent immunohistology in a large GBO showing EdU detection in tumor cells labeled with NESTIN and HOP homeobox (HOPX) after a 1-h incubation with 1 μ M EdU. Representative images are based on the analysis of five GBOs. Scale bar, 200 μ m. **d**, Higher-magnification sample confocal images of fluorescent immunohistology in a large GBO, showing 5-ethynyl-2'-deoxyuridine (EdU) detection in tumor cells labeled with NESTIN, HOPX, doublecortin (DCX), S100B and/or glial fibrillary acidic protein (GFAP) after a 1-h incubation with 1 μ M EdU. Images highlight many radially oriented cells located outside the core. Representative images are based on the analysis of five GBOs. Scale bar, 50 μ m. **e**, Sample confocal images of fluorescent immunohistology for phospho-vimentin (pVIM) and phospho-histone H3 (PH3) in GBOs cultured for 4 weeks, highlighting the diverse morphology of tumor cells in mitosis. Representative images are based on the analysis of five GBOs. Scale bar, 25 μ m. **f**, Sample confocal images of fluorescent immunohistology for EGFP in GBOs transduced with cytomegalovirus-EGFP lentivirus for 2 h and cultured for 7 d (left) and 100 d (middle) without passaging to label tumor cells and their progeny. The lentivirus initially efficiently infects cells on the surface of GBOs that generate many labeled progenies distributed throughout the GBOs after extended culture. A higher-magnification image (right) highlights the diverse morphology of labeled cells after 100 d post transduction (DPT). Representative images are based on the analysis of five GBOs per timepoint. LV, lentivirus. Scale bars, 200 μ m. Images were taken using Zen 2 Blue software and were processed using Illustrator CC, ImageJ, Imaris and/or Photoshop CC software.

Expertise needed to implement the protocol

Close coordination between neurosurgeons and pathologists is necessary to implement our protocol, as glioblastoma tissue must be obtained from patients with optimal tissue quality to successfully derive GBOs. Although not required, prior experience with organoid and T cell culture is helpful when first implementing our protocol. Tissue processing, immunohistology and microscopy experience is helpful for downstream analyses. We are confident that any motivated individual can reproduce this protocol with access to quality resected patient tumor tissue, the proper resources and careful attention to detail.

Limitations of GBO culture

Although our GBO model provides a timely platform to study the cellular heterogeneity of glioblastoma tumors and patient-specific responses to targeted therapies, it has limitations. The laboratory where the GBOs are derived must be located at or near a major hospital that performs surgical removal of brain tumors. Successful GBO generation requires close coordination with neurosurgeons to resect viable tumor tissue en bloc without cauterization, and pathologists are required to quickly confirm the diagnosis and limit the time from resection to tissue processing. Differences in tissue quality greatly affect the fidelity of GBO generation, as fresh, carefully resected, cell-dense tumor tissue can be cultured more successfully than heavily cauterized, suctioned or highly necrotic and cell-sparse tissue. Although GBOs recapitulate the heterogeneous population of cells found in parent glioblastoma tumors, the cell types and their characteristics may change over prolonged culture (>6 months). It is not currently known whether changes in population dynamics accurately recapitulate the population changes known to occur in tumors in patients. We recommend that GBOs are biobanked within 2 months to ensure availability of low-passage samples for further experimentation.

Typically, we have had more success generating organoids from treatment-naïve primary glioblastomas than recurrent/residual tumors (Fig. 2a). We think this is due to the poor tissue quality of recurrent/residual tumors, as they usually have increased necrosis and fewer proliferating cells. We have had success generating GBOs from tumors containing a wide range of mutations (Fig. 2b) but have had lower success with tumors containing *IDH1* mutations. These tumors are generally less proliferative and arise from lower-grade gliomas⁴², which we have had less success propagating.

Because our method does not require cell dissociation and GBOs are generated directly from micro-dissected tumor pieces, many non-tumor cells are retained, particularly tumor-associated macrophages/microglia and endothelial cells (Fig. 4b–e). Although the immune and endothelial cells generally persist for ≥ 8 weeks, they inevitably decrease as a percentage of total cells over time because

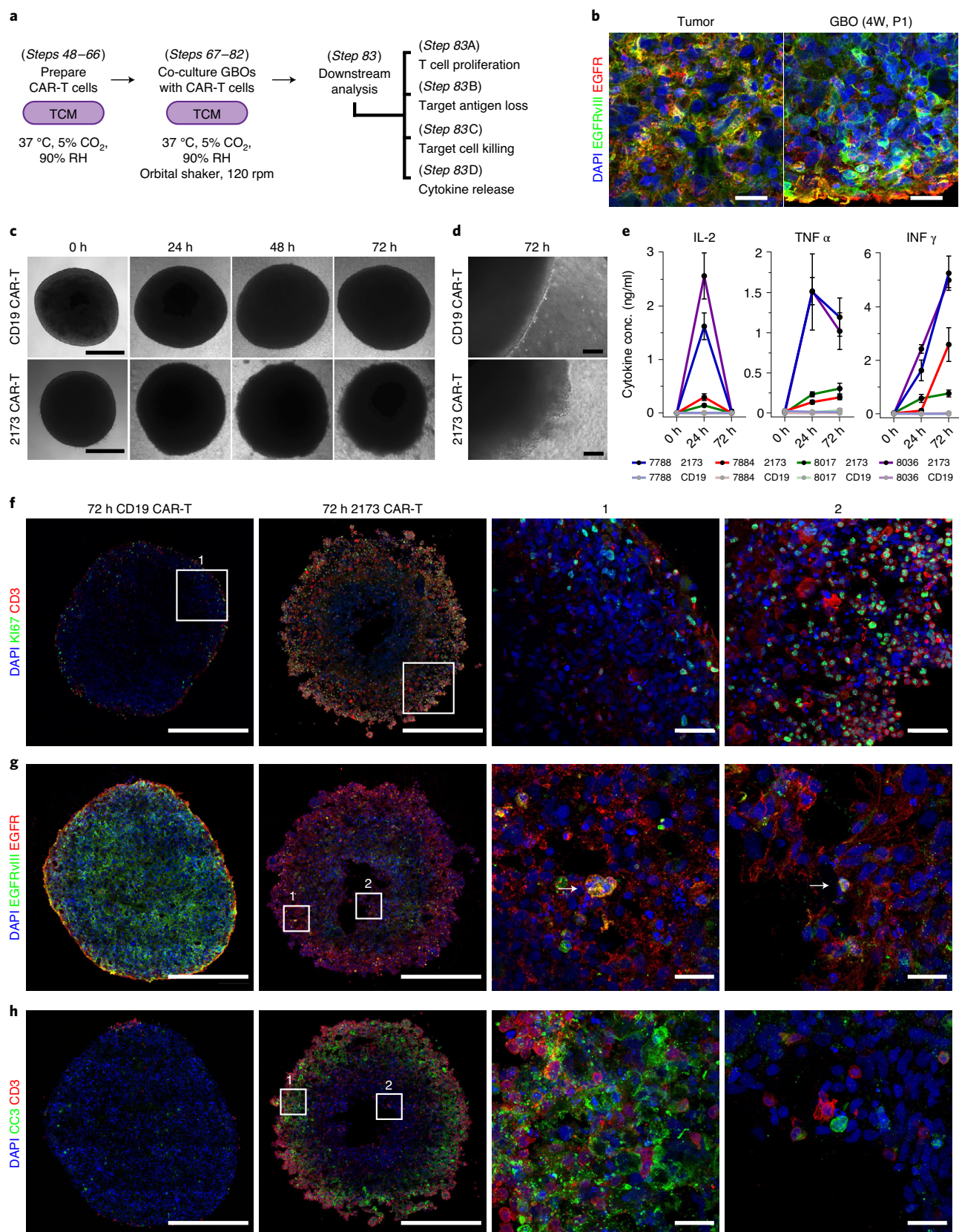


Fig. 6 | GBO co-culture with CAR T cells. **a**, Diagram outlining the steps to prepare and co-culture CAR T cells with GBOs with downstream analyses. The medium and culture conditions are indicated below each step. TCM, T cell medium; RH, relative humidity. **b**, Sample confocal images of fluorescent immunohistology for epidermal growth factor receptor (EGFR) and EGFR variant 3 (EGFRvIII) in parent tumor tissue and corresponding GBOs, showing the maintenance of heterogeneous EGFRvIII expression. Representative images are based on the analysis of five tumor pieces or GBOs. Scale bar, 25 μm . **c**, Sample bright-field images of individual EGFRvIII-expressing GBOs monitored at 0, 24, 48 and 72-h timepoints when co-cultured with either CD19 or 2173 CAR T cells. Representative images are based on the analysis of 10 GBOs. Scale bar, 500 μm . **d**, Sample bright-field images of the edge of EGFRvIII-expressing GBOs when co-cultured with either CD19 or 2173 CAR T cells for 72 h, highlighting differences in T cell invasion and proliferation. Representative images are based on the analysis of 10 GBOs. Scale bar, 100 μm . **e**, Quantification of IL-2, tumor necrosis factor alpha (TNF- α) and interferon gamma (IFN- γ) concentrations in media collected at 0, 24 and 72 h after co-culture of GBOs with either CD19 or 2173BBz CAR T cells by ELISA. Values represent mean \pm s.e.m. ($n = 3$ GBOs per sample per timepoint). Data are replotted from Figure S7D in Jacob et al.¹¹. The graph was plotted and the mean and SEM were calculated using Prism. **f**, Sample confocal images of fluorescent immunohistology for CD3 and Ki67 in EGFRvIII-expressing GBOs after co-culture with either CD19 or 2173 CAR T cells for 72 h, showing increased T cell invasion and proliferation when co-cultured with 2173 CAR T cells, with higher-magnification images of boxed regions highlighting these differences. Representative images are based on the analysis of five GBOs. Scale bars, 500 μm (whole GBO) and 50 μm (boxed regions). **g**, Sample confocal images of fluorescent immunohistology for EGFRvIII and EGFR in EGFRvIII-expressing GBOs after co-culture with either CD19 or 2173 CAR T cells for 72 h, showing EGFRvIII antigen loss when co-cultured with 2173 CAR T cells, with higher-magnification images of boxed regions highlighting loss of EGFRvIII antigen at the GBO periphery (1) and core (2). White arrows highlight EGFRvIII⁺ cells with karyohexis. Representative images are based on the analysis of five GBOs. Scale bars, 500 μm (whole GBO) and 25 μm (boxed regions). **h**, Sample confocal images of fluorescent immunohistology for cleaved caspase 3 (CC3) and cluster of differentiation 3 (CD3) in EGFRvIII-expressing GBOs after co-culture with either CD19 or 2173 CAR T cells for 72 h, showing increased apoptosis when co-cultured with 2173 CAR T cells, with higher-magnification images of boxed regions highlighting apoptotic cells near T cells at the GBO periphery (1) and core (2). Representative images are based on the analysis of five GBOs. Scale bars, 500 μm (whole GBO) and 25 μm (boxed regions). Images were taken using Zen 2 Blue software and were processed using Illustrator CC, ImageJ, Imaris and/or Photoshop CC software.

they are not dividing and undergo senescence (Fig. 4c). Our medium is optimized to facilitate glioblastoma cell survival and growth and thus might not be ideal for the cell survival or proliferation of immune and endothelial cells. The presence of endothelial cells is particularly variable across GBO samples because of the non-uniform occurrence of blood vessels throughout the tumor bulk and variability in the vascularity of different tumors. To address this limitation, GBOs could be co-cultured with immune and/or endothelial cells to reconstitute the microenvironment. This has already been demonstrated for many cerebral organoid models^{43–46} and thus could be feasible in GBOs.

Limitations of GBO and CAR T cell co-culture

Our GBO and CAR T cell co-culture methodology provides a platform to investigate CAR T cell invasion into solid tumors and killing efficacy but is not without its limitations. Our system does not recapitulate CAR T cell infiltration into tumor tissue from blood vessels as would normally occur with peripheral infusion. Our system is also oversimplified because the CAR T cells have direct access to the tumor cells in culture, whereas they would need to extravasate from blood vessels and migrate to their target cells in vivo. Therefore, the ratio of CAR T cells to tumor cells may not be representative of the number of CAR T cells that would reach a solid tumor in vivo. To better address these limitations, GBOs can be xenografted into rodent brains, and CAR T cells could be peripherally infused. However, this method is limited because it requires the use of immunodeficient mice to prevent host rejection of the graft. The large size of GBOs limits the ability to uniformly load fluorescent dyes or indicators. This makes it difficult to quantify cell killing using the equivalent assays to those used in single-cell-suspension killing assays. GBOs are also less useful for high-throughput screening of many different CAR T cells because the optimal method to analyze the effectiveness of CAR T cells is through manual cryo-sectioning, immunohistology and imaging. GBOs could be dissociated before co-culture with CAR T cells, but dissociation fails to recapitulate the 3D properties of solid tumors and could cause differential survival of certain cell populations.

Experimental design

Overview

The first part of the following step-by-step procedure describes how to generate GBOs from surgically resected patient glioblastoma tumor tissue, passage GBOs for prolonged culture and expansion and

cryopreserve and thaw GBOs for later experimentation (Figs. 1 and 3). The second part describes how to co-culture GBOs with CAR T cells and assess target specificity and cell-killing efficacy by quantification using immunohistology (Figs. 1 and 6).

Generation of GBOs and biobanking

Steps 1–16 describe how to micro-dissect human glioblastoma tissue obtained from surgical resection into pieces and then culture in an optimized medium on an orbital shaker (Fig. 3a). This generates GBOs as described previously¹¹. GBOs are passaged by cutting into smaller pieces, as described in Steps 17–23. GBOs can be cryopreserved and thawed as described in Steps 24–47 of this protocol. GBO generation should be verified visually by observing survival and rounding of tumor pieces as they continuously proliferate. Procedures for processing tumor tissue and GBOs for downstream analysis are described in Box 1. The maintenance of parent tumor cellular heterogeneity, proliferation rates and hypoxia gradients in GBOs is analyzed by immunohistology as described in Boxes 2 and 3.

Preparation of CAR T cells, co-culture with GBOs and killing assay

Experimental CAR T cells that recognize an antigen expressed by glioblastoma cells and control CAR T cells that recognize an antigen not expressed by glioblastoma cells are recovered and expanded from frozen stocks as described in Steps 48–66. These cells are co-cultured with GBOs for 72 h as described in Steps 67–82 of this protocol. Culture of GBOs in a medium containing CAR T cells on an orbital shaker models CAR T cell invasion into solid tumors and migration toward antigen-expressing cells. Downstream analyses are described in Step 83a–d. Target antigen loss (e.g., EGFRvIII) and cell death (cleaved caspase-3) of tumor cells can be detected by immunohistology and used to assess CAR T cell target specificity and killing efficacy. Immunohistology to monitor T cell proliferation (CD3⁺KI67⁺) and ELISA of cytokines released by activated T cells (IL-2, interferon gamma (IFN γ) and tumor necrosis factor alpha (TNF α)) can be used to assess CAR T cell activation.

Controls

Pieces of parent tumor should always be sampled (Box 1) to assess how well the resulting GBOs recapitulate the cellular heterogeneity, transcriptome and/or mutations of the parent tumor. Since they are not clonally derived, GBOs have more inherent variability than cell lines; thus, proper controls, adequate sample sizes and standardized methods are all required to make informative conclusions. To properly interpret immunohistology results, it is imperative to culture, process, perform immunohistology on and image the samples being compared in parallel. Variations in processing should be minimized, as they can lead to differences in antibody labeling and a possible misinterpretation of the results. Always confirm antibody specificity using secondary antibody-only controls. For all experiments involving immunohistology, we suggest analyzing at least three to five tumor pieces and/or GBOs per sample with three to five images each, and for transcriptomic and genomic studies, we suggest sequencing multiple tumor pieces and/or GBOs together or as triplicates to account for variability between GBOs.

Quantification of T cell invasion and proliferation, target antigen loss in tumor cells and apoptosis of target tumor cells can be used to assess CAR T cell activation and target cell killing. Two controls are critical to ensure that the results are specific to the experimental CAR T cells and their target antigen. The first control is CAR T cells that recognize an antigen not expressed by glioblastoma cells. For example, include co-culture of GBOs with CD19 CAR T cells that recognize the B cell lineage⁴⁷. This will test whether the observed cell killing is a result of the antigen recognized by the experimental CAR as opposed to generalized killing in the presence of T cells. The second control is a GBO sample that does not contain the antigen that the experimental CAR T cells recognize. For example, if the CAR T cells recognize EGFRvIII, a mutant variant of EGFR often found in glioblastomas, include co-culture with GBOs that do not contain cells expressing EGFRvIII. This will test the specificity of the experimental CAR for its antigen. If possible, consider a third control that involves co-culture of non-neoplastic neurons, neurospheres and/or brain organoids with the experimental CAR T cells to verify that the target antigen is specific to tumor cells and is not expressed by other brain cells. For ELISAs, it is important to include a medium sampled from GBOs and CAR T cells that were not co-cultured with each other to measure baseline cytokine levels.

Randomly assigning organoids to treatment groups and blinding the examiner to the treatment groups is important to reduce bias when analyzing results. When possible, include GBOs from a group of patients with diverse demographics, such as age and gender, to reduce sampling bias when evaluating the effects of treatments.

Materials

▲ CRITICAL The reagents and equipment listed in this section have been tested to ensure optimal performance for our protocols. Materials may be substituted for equivalents from other suppliers, but we cannot guarantee that they will perform equally.

Biological materials

Tumor tissue (see Reagent setup for details)

CAR T cells. Detailed procedures describing how to generate CAR T cells can be found in refs. ^{22,48}. The CAR T cells used to generate the sample data in Fig. 6 were generated by transducing T cells isolated from donor leukapheresis products with genome-integrating lentiviruses harboring the CAR sequence. The Supplementary Methods file includes information on the materials and procedures used to generate these CAR T cells.

Reagents

Antibodies

- Donkey anti-goat IgG polyclonal secondary antibody (Alexa Fluor 488, Alexa Fluor 555 and Alexa Fluor 647; Thermo Fisher Scientific, cat. nos. A-11055, A-21432 and A-21447; RRIDs: [AB_2534102](#), [AB_2535853](#) and [AB_2535864](#))
- Donkey anti-mouse IgG polyclonal secondary antibody (Alexa Fluor 488, Alexa Fluor 555 and Alexa Fluor 647; Thermo Fisher Scientific, cat. nos. A-21202, A-31570 and A-31571; RRIDs: [AB_141607](#), [AB_2536180](#) and [AB_162542](#))
- Donkey anti-rabbit IgG polyclonal secondary antibody (Alexa Fluor 488, Alexa Fluor 555 and Alexa Fluor 647; Thermo Fisher Scientific, cat. nos. A-21206, A-31572 and A-31573; RRIDs: [AB_2535792](#), [AB_162543](#) and [AB_2536183](#))
- Goat anti-doublecortin polyclonal antibody (Santa Cruz Biotechnology, cat. no. sc-8066; RRID: [AB_2088494](#))
- Goat anti-nestin polyclonal antibody (Santa Cruz Biotechnology, cat. no. sc-21247; RRID: [AB_650014](#))
- Goat anti-Sox2 polyclonal antibody (Santa Cruz Biotechnology, cat. no. sc-17320; RRID: [AB_2286684](#))
- Mouse anti-brain lipid-binding protein (BLBP) monoclonal antibody (Abcam, cat. no. ab131137; RRID: [AB_11157091](#))
- Mouse anti-CD3 monoclonal antibody (BioLegend, cat. no. 344802; RRID: [AB_2043995](#))
- Mouse anti-EGFR monoclonal antibody (Thermo Fisher Scientific, cat. no. MA1-12693; RRID: [AB_1074165](#))
- Mouse anti-glial fibrillary acidic protein (GFAP) monoclonal antibody (Millipore, cat. no. MAB360; RRID: [AB_11212597](#))
- Mouse anti-granzyme B monoclonal antibody (R&D Systems, cat. no. MAB2906; RRID: [AB_2263752](#))
- Mouse anti-Ki67 monoclonal antibody (BD Biosciences, cat. no. 550609; RRID: [AB_39377](#))
- Mouse anti-phospho-histone H3 monoclonal antibody (Cell Signaling Technology, cat. no. 9706; RRID: [AB_331748](#))
- Mouse anti-von Willebrand factor (VWF) monoclonal antibody (Santa Cruz Biotechnology, cat. no. sc-365712; RRID: [AB_10842026](#))
- Rabbit anti-CD31 polyclonal antibody (Abcam, cat. no. ab28364; RRID: [AB_726362](#))
- Rabbit anti-cleaved caspase-3 polyclonal antibody (Cell Signaling Technology, cat. no. 9661; RRID: [AB_2341188](#))
- Rabbit anti-EGFRvIII monoclonal antibody (Cell Signaling Technology, cat. no. 64952; RRID: [AB_2773018](#))
- Rabbit anti-Hopx polyclonal antibody (Santa Cruz Biotechnology, cat. no. sc-30216; RRID: [AB_2120833](#))
- Rabbit anti-Iba1 polyclonal antibody (Wako, cat. no. 019-19741; RRID: [AB_839504](#))
- Rabbit anti-Ki67 polyclonal antibody (Abcam, cat. no. ab15580; RRID: [AB_443209](#))
- Rabbit anti-Olig2 monoclonal antibody (Abcam, cat. no. ab109186; RRID: [AB_10861310](#))
- Rabbit anti-phospho-vimentin monoclonal antibody (Cell Signaling Technology, cat. no. 3877; RRID: [AB_2216265](#))
- Rabbit anti-S100B polyclonal antibody (Sigma-Aldrich, cat. no. S2644; RRID: [AB_477501](#))
- Rat anti-CD3 monoclonal antibody (GeneTex, cat. no. GTX11089; RRID: [AB_369097](#))

Culture components

- 2-Mercaptoethanol (Thermo Fisher Scientific, cat. no. 21985023)
- Antibiotic-antimycotic (Thermo Fisher Scientific, cat. no. 15240062)

- B27 supplement minus vitamin A (Thermo Fisher Scientific, cat. no. 12587010) **▲ CRITICAL** Use B27 without vitamin A, as vitamin A is readily metabolized to retinoic acid, which has been shown to decrease the proliferation of glioma stem cells and promote their differentiation⁴⁹.
- DMSO (Sigma-Aldrich, cat. no. D2650)
- DMEM/F-12 (Thermo Fisher Scientific, cat. no. 11320033)
- DPBS with calcium and magnesium (DPBS++; Thermo Fisher Scientific, cat. no. 14040133)
- GlutaMAX supplement (Thermo Fisher Scientific, cat. no. 35050061)
- Glycine, ultrapure (Thermo Fisher Scientific, cat. no. 15527013)
- Hibernate A medium (BrainBits, cat. no. HA)
- Human insulin solution (Sigma-Aldrich, cat. no. I9278)
- Human recombinant IL-2 (Sigma-Aldrich, cat. no. 11011456001)
- ImmunoCult-XF T cell expansion medium (StemCell Technologies, cat. no. 10981)
- MEM non-essential amino acids (MEM-NEAAs) solution (Thermo Fisher Scientific, cat. no. 11140050)
- N2 supplement (Thermo Fisher Scientific, cat. no. 17502048)
- Neurobasal medium (Thermo Fisher Scientific, cat. no. 21103049)
- Penicillin-streptomycin (Thermo Fisher Scientific, cat. no. 15070063)
- Y-27632 (StemCell Technologies, cat. no. 72304)

Other reagents

- 1× red blood cell lysis buffer (Thermo Fisher Scientific, cat. no. 00433357)
- 16% (vol/vol) formaldehyde, methanol free (Polysciences, cat. no. 18814-10) **▲ CRITICAL** Ensure that the formaldehyde solution is methanol-free, as methanol can have an impact on the quality of fixation, including interference with membrane-bound protein staining, cytoskeletal protein staining and the stability of fluorescent proteins⁵⁰.
- EdU (Abcam, cat. no. ab146186)
- BSA (Sigma-Aldrich, cat. no. B6917)
- Click-iT EdU Alexa Fluor imaging kit (Alexa Fluor 488, Alexa Fluor 555 and Alexa Fluor 647; Thermo Fisher Scientific, cat. nos. C10337, C10338 and C10340)
- Conflit quaternary disinfectant (Decon Labs, cat. no. 4101)
- DAPI (Sigma-Aldrich, cat. no. 10236276001)
- Donkey serum (Millipore, cat. no. S30)
- DPBS without calcium and magnesium (Thermo Fisher Scientific, cat. no. 14190144)
- DuoSet ELISA ancillary reagent kit 1 (R&D Systems, cat. no. DY007)
- Ethyl alcohol, 95% (vol/vol), 190 proof, pure (Pharmco-Aaper, cat. no. 111000190CSGL)
- EZ-PCR mycoplasma test kit (Biological Industries, cat. no. 2070020)
- Gelatin from cold water fish skin (Sigma-Aldrich, cat. no. G7041)
- GenePrint 24 system short-tandem repeat (STR) profiling kit (Promega, cat. no. B1870)
- Human IFN γ DuoSet ELISA (R&D Systems, cat. no. DY285B-05)
- Human IL-2 DuoSet ELISA (R&D Systems, cat. no. DY202-05)
- Human TNF α DuoSet ELISA (R&D Systems, cat. no. DY210-05)
- Hydrochloric acid (Sigma-Aldrich, cat. no. H1758)
- Hypoxypore kit (Hypoxypore, cat. no. HP1-100Kit)
- Isopropanol (Sigma-Aldrich, cat. no. 437522)
- Neural tissue dissociation kit—postnatal neurons (Miltenyi Biotech, cat. no. 130-094-802)
- Plasmocin mycoplasma elimination reagent (InvivoGen, cat. no. ant-mpt-1)
- Sodium chloride (Sigma-Aldrich, cat. no. 71376)
- Sucrose (Sigma-Aldrich, cat. no. S0389)
- Tissue-freezing medium (General Data, cat. no. 1518313)
- Tris base (Sigma-Aldrich, cat. no. 93362)
- Triton X-100 (Sigma-Aldrich, cat. no. T9284)
- TrueBlack lipofuscin autofluorescence quencher (Biotium, cat. no. 23007)
- Trypan blue stain (Thermo Fisher Scientific, cat. no. T10282)
- Tween 20 (Sigma-Aldrich, cat. no. P1379)
- Ultrapure DNase/RNase-free distilled water (Thermo Fisher Scientific, cat. no. 10977015)
- VECTASHIELD Vibrance antifade mounting medium (Vector Laboratories, cat. no. H170010)

Equipment

- 1.5-ml microcentrifuge tubes (USA Scientific, cat. no. 1615-5500)
- 30-mm conical tube rack (Fisher Scientific, cat. no. 14-809-44)
- Autoclave
- Benchtop minicentrifuge (Benchmark Scientific, cat. no. C1012)
- Benchtop centrifuge (Fisher Scientific, model no. AccuSpin 400)
- Biological safety cabinet (Baker Company, Sterilgard Series)
- Biopsy cryomold (Tissue-Tek, cat. no. 4565)
- Cell-counting slides (Thermo Fisher Scientific, cat. no. C10228)
- Charged microscope slides (Fisher Scientific, cat. no. 22-035813)
- CO₂ incubator (5% CO₂, 37 °C, 90% humidity; Thermo Fisher Scientific, cat. no. 3310)
- Confocal microscope with 10×, 20×, 40× and 63× objectives (Zeiss, model no. LSM 800)
- Conical tubes (15 and 50 ml; Corning, cat. nos. 05-538-59A and 05-526B)
- CoolCell cell-freezing container (Corning, cat. no. 432001)
- Countess II automated cell counter (Thermo Fisher Scientific, cat. no. AMQAX1000)
- Cryogenic vials (Thermo Fisher Scientific, cat. no. 12-567-501)
- Delicate task wipers (Fisher Scientific, cat. no. 34120)
- Disposable filter units with 0.2-µm polyethersulfone (PES) membrane, 500 ml (Thermo Fisher, cat. no. 566-0020)
- Disposable microtome blades (Sakura Finetek USA, cat. no. 4689)
- Dissection microscope (Zeiss, model no. SteREO Discovery.V8)
- Eppendorf variable adjustable-volume pipettes (P1000, P200 and P20; Fisher Scientific, cat. nos. 13-690-032, 13-690-030 and 13-690-027)
- Filter pipette tips (1,000 and 200 µl; USA Scientific, cat. nos. 1126-7810 and 1120-8810)
- Fine forceps—curved/serrated (Fine Science Tools, cat. no. 11065-07)
- Fine-tip marking pens (Fisher Scientific, cat. no. 13-379-4)
- Glass culture dish (Sigma-Aldrich, cat. no. CLS3160102)
- Hydrophobic barrier PAP pen (Vector Laboratories, cat. no. H-4000)
- Inverted microscope (Zeiss, Axiovert 40 CFL model)
- Label printer (Fisher Scientific, cat. no. 19-102-824)
- MACS SmartStrainer, 70 µm (Miltenyi Biotec, cat. no. 130-098-462)
- Microtube rack (Fisher Scientific, cat. no. 22-313630)
- Orbital shaker, CO₂ resistant (Thermo Fisher Scientific, cat. no. 88881102)
- Polystyrene serological pipettes (1, 5, 10 and 25 ml; Fisher Scientific, cat. nos. 13-675-15B, 13-675-22, 13-675-20 and 13-675-30)
- Razor blades (Fisher Scientific, cat. no. 12-640)
- Rectangle cover glasses (Fisher Scientific, cat. no. 12-545-F)
- Repair kit for fine forceps (Fine Science Tools, cat. no. 29000-00)
- Research cryostat (Leica, cat. no. CM3050 S)
- Self-laminating polyester cryogenic laboratory labels (Fisher Scientific, cat. no. 19-102-744)
- Sharpening stone (Fine Science Tools, cat. no. 29008-12)
- Slide-staining chamber (Electron Microscopy Sciences, cat. no. 62010-37)
- Sterilization pouches (Fisher Scientific, cat. no. 01-812-54)
- Syringe filters, 0.2-µm PES (Thermo Fisher Scientific, cat. no. 42225-PS)
- Syringe filters, 0.2-µm nylon (Thermo Fisher Scientific, cat. no. 42225-NN)
- Ultra-low attachment culture plates (6 and 24 wells; Corning, cat. nos. CLS3471 and CLS3473)
- Untreated 6-well culture plates (Corning, cat. no. CLS3736)
- Vannas spring scissors—curved/3-mm cutting edge (Fine Science Tools, cat. no. 15000-10)
- Weighing dishes (Sigma-Aldrich, cat. no. Z154873)

Software

- Illustrator CC (Adobe, <https://www.adobe.com/products/illustrator.html>; RRID: SCR_010279)
- Image J (NIH, <https://imagej.nih.gov/ij/>; RRID: SCR_003070)
- Imaris (Bitplane, <https://imaris.oxinst.com/packages>; RRID: SCR_007370)
- Photoshop CC (Adobe, <https://www.adobe.com/products/photoshop.html>; RRID: SCR_014199)
- Prism (GraphPad, <https://www.graphpad.com/scientific-software/prism/>; RRID: SCR_002798)
- Zen 2 Blue (Zeiss, <https://www.zeiss.com/microscopy/us/products/microscope-software/zen.html>; RRID: SCR_013672)

Reagent setup

Tumor tissue

Glioblastoma tumor tissue should be obtained directly from en bloc surgical resection and placed in a glioblastoma dissection medium on ice during transportation and temporary storage. Tissue processing should begin <2 h after tissue removal to maximize viability. For best results, prioritize obtaining and processing tumor pieces that are cell dense and lack substantial surrounding brain tissue or hemorrhage (Fig. 3c). The use of human brain tissue and peripheral blood samples to obtain data for this protocol was coordinated by the University of Pennsylvania Tumor Tissue/Biospecimen Bank following ethical and technical guidelines on the use of human samples for biomedical research purposes. Patient glioblastoma tissue and peripheral blood samples were collected at the Hospital of the University of Pennsylvania after informed patient consent under a protocol approved by the University of Pennsylvania's Institutional Review Board. All patient samples were de-identified before processing. A total of 58 patient cases (including recurrent cases) from both male and female subjects between the ages of 21 and 90 years were used to generate the data shown. Research participants were chosen on the basis of a diagnosis of glioblastoma, without specific consideration regarding sex or age. Informed patient consent was obtained before surgery. **! CAUTION** Informed patient consent is required for the use of human tissue, and all studies must adhere to institutional and governmental ethical and technical guidelines on the use of human samples for biomedical research purposes. **! CAUTION** When handling multiple patients' tumors or regional samples of the same tumor simultaneously, pay extra attention to avoid cross-contamination. We recommend using separate dissection tools, culture vessels and pipette tips for each sample and only reusing tools after proper cleaning and sterilization by autoclave. **! CAUTION** GBOs should be tested regularly for mycoplasma contamination, which can greatly affect the growth and behavior of tumor cells⁵¹. Testing the original source material is unreliable because mycoplasma can be diluted when tumor tissue is placed in fresh solutions, and tumor tissue may become contaminated during dissection and processing. We recommend testing after tumor pieces have been in culture for ≥ 1 week using a medium sample that has not been recently replaced. Testing must be performed before biobanking and using samples for experimentation. We recommend a PCR-based testing kit from Biological Industries, which contains detailed instructions for operation (additional equipment may be required) in Other reagents. Mycoplasma testing can also be outsourced to vendors, including ATCC (https://www.atcc.org/services/testing_services/mycoplasma_testing) and Cell Line Genetics (https://clgenetics.com/sample_mycoplasma_testing) by following the instructions on their websites. GBO samples that test positive for mycoplasma are discarded unless they are particularly important for later clinical testing, for which we attempt mycoplasma removal by treatment with Plasmocin (InvivoGen) using the instructions provided with the reagent. **! CAUTION** To verify that the glioblastoma tissue and resulting organoids are matched with the correct patient medical information and that the samples are not cross-contaminated, we recommend routine STR profiling of DNA isolated from patients and GBOs. This is especially important as proper quality control when creating a biobank. We recommend an STR profiling kit from Promega (additional equipment may be required), which contains detailed instructions for operation, in Other reagents. STR profiling can also be outsourced to vendors, including ATCC (https://www.atcc.org/services/testing_services/cell_authentication_testing_service) and Cell Line Genetics (<https://clgenetics.com/our-services/short-tandem-repeat-analysis>) by following the instructions on their websites.

Antibody dilution solution

Add 100 μ l of Triton X-100 and 5 ml of donkey serum to 95 ml of Tris-buffered saline with Tween-20 (TBST) and mix thoroughly by inverting or using a magnetic stir bar and plate. Sterilize by syringe or vacuum filtration through a 0.2- μ m PES membrane. Prepare single-use aliquots and store at or below -20°C for ≤ 6 months. Avoid repeated freeze–thaw cycles.

Autofluorescence quenching solution

Dilute 20 \times stock TrueBlack reagent with 70% (vol/vol) ethanol to obtain a 1 \times solution. Prepare the volume needed immediately before use and protect from exposure to light. **! CAUTION** Ethanol is highly flammable and can cause irritation when inhaled; keep away from flames and use in well-ventilated areas.

Blocking and permeabilization solution

Dissolve 0.1 g of gelatin, 2.25 g of glycine and 1 g of BSA in 90 ml of TBST. Add 0.5 ml of Triton X-100 and 10 ml of donkey serum and mix the solution well by inverting or using a magnetic stir bar and plate. Sterilize by syringe or vacuum filtration through a 0.2- μ m PES membrane. Prepare single-use aliquots and store at or below -20°C for ≤ 6 months. Avoid repeated freeze-thaw cycles.

EdU solution

Dissolve 50 mg of EdU in 19.8 ml of DMSO to obtain a 10 mM stock solution. Sterilize by syringe or vacuum filtration through a 0.2- μ m nylon membrane. Prepare single-use aliquots and store at or below -20°C for ≤ 6 months. Avoid repeated freeze-thaw cycles. **!CAUTION** EdU is a chemical agent that incorporates into newly synthesized DNA. Use appropriate personal protective equipment to avoid direct contact with EdU solutions.

Ethanol mixture (70% (vol/vol))

Add 737 ml of 190 proof ethanol to a 1-liter graduated cylinder. Fill the graduated cylinder to 1 liter with ultra-pure water. Store at room temperature (20 – 22°C) in a sealed container or spray bottle. **!CAUTION** Ethanol is highly flammable and can cause irritation when inhaled; keep away from flames and use in well-ventilated areas.

Formaldehyde solution (4% (vol/vol))

Dilute 10 ml of 16% (vol/vol) methanol-free formaldehyde solution to 8% (vol/vol) by adding 10 ml of $2\times$ Tris-buffered saline (TBS). Dilute the 8% (vol/vol) solution to 4% (vol/vol) by adding 20 ml of $1\times$ TBS. Store at 4°C for ≤ 1 week. **!CAUTION** Formaldehyde is an irritant and known carcinogen and should only be handled with proper personal protective equipment within a well-ventilated area.

Glioblastoma dissection medium

Combine 490 ml of Hibernate A, 5 ml of GlutaMAX supplement ($100\times$), and 5 ml of antibiotic-antimycotic ($100\times$) (see also the table below for volumes required for 500 ml). Sterilize by vacuum filtration through a 0.2- μ m PES membrane. Store at 4°C for ≤ 4 weeks.

Component	Volume (ml)
Hibernate A	490
GlutaMAX supplement ($100\times$)	5
Antibiotic-antimycotic ($100\times$)	5

▲ CRITICAL Inclusion of antibiotic-antimycotic is important as prophylaxis for bacterial or fungal contamination during tissue processing by pathology and transportation to the laboratory.

GBO medium

Combine 235 ml of DMEM:F12 medium, 235 ml of Neurobasal medium, 5 ml of MEM-NEAAs solution ($100\times$), 5 ml of GlutaMAX supplement ($100\times$), 5 ml of penicillin-streptomycin ($100\times$), 5 ml of N2 supplement ($100\times$), 10 ml of B27 minus vitamin A supplement ($50\times$) and 125 μ l of human recombinant insulin (see also the table below for volumes required for 500 ml). Sterilize by vacuum filtration through a 0.2- μ m PES membrane. Store at 4°C for ≤ 4 weeks. Add the needed amount of 2-mercaptoethanol ($1,000\times$) to an aliquot of medium immediately before changing the GBO medium. **!CAUTION** 2-mercaptoethanol is not stable in solution. Add fresh, sterile 2-mercaptoethanol to an aliquot of medium before each medium change. Store $1,000\times$ 2-mercaptoethanol solution at 4°C until the date indicated on the bottle.

Component	Volume
DMEM/F-12	235 ml
Neurobasal medium	235 ml
MEM-NEAAs solution ($100\times$)	5 ml
Table continued	

(continued)

Component	Volume
GlutaMAX supplement (100×)	5 ml
N2 supplement (100×)	5 ml
B27 supplement (50×), minus vitamin A	10 ml
Penicillin-streptomycin (100×)	5 ml
Human insulin solution	125 µl

GBO freezing medium

Add 5 ml of DMSO to 45 ml of GBO medium (see also the table below for volumes required for 500 ml). Sterilize by syringe or vacuum filtration through a 0.2-µm PES membrane. Store at 4 °C for ≤2 weeks.

Component	Volume
GBO medium	45 ml
DMSO	5 ml
20 mM Y-27632 dihydrochloride	25 µl

Isopropanol cooled with dry ice

Add dry ice to a suitable ice bucket. Slowly add isopropanol to completely submerge the dry ice pieces. Allow isopropanol to cool for 5 min before using. Use isopropanol cooled with dry ice to flash-freeze samples within 15 min. **! CAUTION** Isopropanol is highly flammable and can cause irritation when inhaled; keep away from flames and use in well-ventilated areas. **! CAUTION** Dry ice and isopropanol cooled with dry ice are very cold. Use appropriate personal protective equipment to avoid injury. **! CAUTION** Isopropanol may remove ink labels on tubes or cryomolds. Use an isopropanol-resistant marker to prevent loss of sample identity.

Pimonidazole-HCl solution

Dissolve 100 mg of pimonidazole-HCl in 860 µl of DPBS to obtain a 400 mM stock solution. Sterilize by syringe or vacuum filtration through a 0.2-µm PES membrane. Prepare single-use aliquots and store at or below −20 °C for ≤6 months. Avoid repeated freeze–thaw cycles and protect from prolonged exposure to light.

Sucrose solution (30% (wt/vol))

Dissolve 30 g of sucrose in 90 ml of TBS. Adjust the final volume to 100 ml with TBS and sterilize by syringe or vacuum filtration through a 0.2-µm PES membrane. Store at 4 °C for ≤6 months.

T cell medium

Sterilize by syringe or vacuum filtration through a 0.2-µm PES membrane. Store at 4 °C for ≤4 weeks.

TBS (10×)

Dissolve 24 g of Tris base and 88 g of sodium chloride in 900 ml of ultra-pure water. Adjust pH to 7.6 with 12 N hydrochloric acid. Adjust the final volume to 1 liter with ultra-pure water and sterilize by autoclaving. Store the stock solution at 4 °C for ≤3 months. Dilute the stock solution in ultra-pure water to obtain a 1× working solution. Store the working solution at room temperature for ≤1 month.

TBST (10×)

Dissolve 24 g of Tris base, 88 g of sodium chloride and 10 ml of Tween-20 in 900 ml of ultra-pure water. Adjust pH to 7.6 with 12 N hydrochloric acid. Adjust the final volume to 1 liter with ultra-pure water and sterilize by autoclaving. Store the stock solution at 4 °C for ≤3 months. Dilute the stock solution in ultra-pure water to obtain a 1× working solution. Store the working solution at room temperature for ≤1 month.

Wide-bore P1000 pipette tips

Carefully cut the ends of P1000 pipette tips using a sterile razor blade or scissors to create an opening ~3 mm in diameter. Place pipette tips into a pipette tip box and autoclave.

Y-27632 dihydrochloride

Dissolve 50 mg of Y-27632 in 7.8 ml of DMSO to obtain a 20 mM stock solution. Sterilize by syringe filtration through a 0.2-µm nylon membrane. Store at or below –20 °C for up to 12 months. Avoid repeated freeze–thaw cycles and protect from prolonged exposure to light.

Procedure

Establishment of GBO culture from resected patient tumor tissue ● Timing 2–4 h for tissue processing, 2–4 weeks for organoid establishment

▲ **CRITICAL** Optimal tumor tissue is resected en bloc from cell-dense regions without substantial necrosis or surrounding brain tissue. Cell-dense tumor tissue is identified as solid white in appearance with occasional blood vessels. Contaminating brain tissue may be difficult to identify but usually appears as pink-yellow tissue that is less cell-dense and may have viable tumor tissue attached. Tumor tissue with substantial hemorrhage is easily identified as pieces with dark red areas of clotted blood. Necrotic tissue is loosely organized and darker and falls apart easily during dissection. Example images of cell-dense tumor tissue, contaminating brain tissue and tumor tissue with substantial hemorrhage are provided in Fig. 3c. Tumor tissue must be processed immediately after resection and confirmed pathologic diagnosis to maximize cell viability. The major steps and conditions for processing resected glioblastoma tissue into tumor pieces for GBO culture are outlined in Fig. 3a.

▲ **CRITICAL** Perform all steps within a sterile laminar flow biosafety cabinet to minimize the risk of microbial contamination. Sterilize all dissection tools and pipette tips by autoclave. Ensure that all non-autoclavable items and equipment within the biosafety cabinet are disinfected with 70% (vol/vol) ethanol before proceeding.

- 1 After preliminary diagnosis of glioblastoma by an attending neuropathologist, transfer surgically resected glioblastoma tumor tissue to a 15-ml conical tube containing 5 ml of ice-cold glioblastoma dissection medium for transportation and short-term storage (Fig. 3b).

▲ **CRITICAL STEP** Obtain proper institutional review board approval and informed patient consent before the surgery and follow all ethical guidelines for the use of human tissue.

▲ **CRITICAL STEP** Begin processing the tumor tissue within 2 h after initial resection to maximize tissue viability. Leaving the tissue overnight at 4 °C will substantially decrease tissue viability.

▲ **CRITICAL STEP** If the surgical resection is large, the tumor tissue can be subdivided into regional samples to analyze intra-tumoral heterogeneity. Subdivide the tumor tissue in a laminar flow biosafety cabinet with a sterile razor blade or scalpel, and place regional samples into separate 15-ml conical tubes with 5 ml of ice-cold glioblastoma dissection medium.

- 2 Place conical tubes with tumor pieces into a tube rack and carefully aspirate the medium above sunken tumor pieces.

- 3 Wash the tumor tissue three times with 10 ml of ice-cold DPBS++ by letting tumor pieces sink to the bottom of the conical tube before carefully aspirating the supernatant (Fig. 3b).

▲ **CRITICAL STEP** Direct exposure to blood components is harmful to cells in culture. Thorough washing is critical to preserve the viability of tumor cells.

- 4 Transfer tumor pieces to a sterile glass dissection dish containing 10 ml of ice-cold glioblastoma dissection medium within a sterile laminar flow biosafety cabinet with a suitable dissection microscope (Fig. 3c).

▲ **CRITICAL STEP** Use glass dishes to avoid introducing debris from scratched plastic dishes into the cultures during dissection.

▲ **CRITICAL STEP** Glass dishes may be reused after washing and autoclaving. Rinse glass dishes thoroughly with deionized water after washing and before autoclaving to remove residual detergents, which are toxic to living cells.

- 5 Carefully cut the tumor tissue into 0.5–1-mm pieces using fine-spring dissection scissors and forceps (Supplementary Video 1). Start by cutting the entire tissue into large pieces. This quickly exposes the tissue to nutrients within the medium. Then, cut each large piece into smaller pieces (Fig. 3d).

▲ **CRITICAL STEP** Do not shred the tissue by pulling it apart. Only make straight cuts using sharpened dissection scissors. Dissection scissors and forceps can be sharpened manually using the sharpening stone and repair kit listed in Materials or by sending to Corte Instruments.

? TROUBLESHOOTING

- 6 While dissecting the tissue, remove pieces with substantial necrosis, hemorrhage or brain tissue, as these pieces have sparse amounts of viable tumor cells and do not produce satisfactory organoids.
▲ CRITICAL STEP Pieces with substantial necrosis are identified as darker, with loose organization, and fall apart easily during dissection. Pieces with substantial hemorrhage are identified as dark red and consisting mostly of clotted blood (Fig. 3c). Brain tissue usually appears as pink-yellow tissue that is less cell dense (Fig. 3c). Brain tissue may be difficult to distinguish from tumor tissue at first but will become easier to identify during culture as they will often be pieces that fail to grow and round up after 1–2 weeks (Fig. 3f,i).
- 7 Collect micro-dissected tumor pieces into a 15-ml conical tube using a P1000 pipette with a wide-bore tip, let the tumor pieces sink to the bottom and carefully aspirate the medium above sunken tumor pieces.
▲ CRITICAL STEP Cell-dense tumor pieces should sink within 30 s. Pieces that fail to sink within 1 min are probably cell sparse and unlikely to successfully form GBOs.
- 8 Wash the tumor pieces three times with 10 ml of room temperature DPBS++ by letting the tumor pieces sink to the bottom of the conical tube before carefully aspirating the supernatant.
- 9 Collect and process a sample of tumor pieces for downstream analysis as described in Box 1.
▲ CRITICAL STEP Sampling micro-dissected tumor pieces is important to compare the cellular heterogeneity, transcriptional signatures and mutation profiles to the resulting GBOs. The micro-dissected tumor pieces are a more accurate reference than tissue banked by pathology because GBOs are generated from the same tumor sample.
- 10 Add 10 ml of red blood cell lysis buffer and incubate the conical tube on a rocking platform shaker set to ~10 tilt cycles/min at room temperature for 10 min to lyse most contaminating red blood cells. The buffer may turn red if the tumor sample contains substantial blood.
- 11 Carefully aspirate off the red blood cell lysis buffer and wash the remaining tumor pieces three times with 10 ml of room temperature DMEM:F12 by letting tumor pieces sink to the bottom of the conical tube before carefully aspirating the supernatant.
- 12 Transfer the dissected tumor pieces to a 6-well, flat-bottom, non-treated culture plate with 10–20 tumor pieces and 4 ml of GBO medium per well.
▲ CRITICAL To minimize cross contamination, do not culture more than one GBO sample in each 6-well plate.
- 13 Culture the tumor pieces on a CO₂-resistant orbital shaker rotating at 120 rpm within a 37 °C, 5% CO₂, 90% relative humidity sterile incubator.
- 14 Replace ~75% of the medium every 48 h by tilting the culture plate at a 45° angle to allow the tumor pieces/GBOs to sink to the bottom, aspirating the medium above the sunken tumor pieces/GBOs and adding 3 ml of fresh GBO medium to each well.
▲ CRITICAL Aspirate carefully to prevent accidental removal of GBOs and always leave the GBOs submerged in ~1 ml of medium so they do not dry out or get damaged.
▲ CRITICAL We recommend using a different aspiration tip for each well to prevent contamination within the culture plate. A clean aspiration tip must be used for each GBO sample to prevent cross-contamination.
- 15 After 1 week of culture, many pieces should appear to round up (Fig. 3e). Remove tumor pieces that do not round up and are cell sparse (Fig. 3f). These pieces are often composed of cell-sparse extracellular matrix from resected brain or necrotic tissue and will not form GBOs.
▲ CRITICAL STEP Within the first week of culture, the tumor pieces will often shed cellular and blood debris, making the medium cloudy. The shedding should soon cease as the tumor pieces form rounded organoids. This generally happens within 2 weeks but is determined by tissue quality and patient-specific tumor growth characteristics.
- 16 Continue culturing GBOs for 2–4 weeks. By this point, it should be readily apparent which pieces are growing, as they should have a round, cell-dense morphology (Fig. 3g). Continue to remove pieces that do not grow until the cultures consist entirely of round GBOs. Also take regular GBO samples at different timepoints (e.g., 1 week, 2 weeks, etc.) to process for downstream analysis as described in Box 1 and immunohistology as described in Box 2 (Table 1). You can analyze hypoxia gradients and active tumor cell proliferation by incubation of live GBOs with pimonidazole-HCl and EdU, respectively, as described in Box 3. Another option is to monitor GBO growth by weekly bright-field imaging of individual GBOs, tracking their relative size over time (see Fig. 2d for representative results).
▲ CRITICAL STEP The criteria for successful establishment of GBOs from a given patient's tumor is that the micro-dissected tumor pieces survive for 2 weeks, develop a spherical morphology and

Table 1 | Primary antibodies used to characterize cellular heterogeneity and evaluate CAR T activation and target killing in GBOs

Cell type	Antibody protein target	Cellular localization	Species and clonality	Vendor	Cat. no., RRID	Dilution
Astrocyte, glioma cell, neural stem cell	SRY-Box 2 (SOX2)	Nucleoplasm	Goat polyclonal	Santa Cruz Biotechnology	sc-17320, AB_2286684	1:500
Glioma cell, oligodendrocyte precursor cell, oligodendrocyte	Oligodendrocyte transcription factor 2 (OLIG2)	Nucleoplasm	Rabbit monoclonal	Abcam	ab109186, AB_10861310	1:500
Actively proliferating cell	Marker of proliferation (Ki67)	Nucleoplasm	Mouse monoclonal	BD Biosciences	550609, AB_39377	1:500
Glioma cell, neuroblast, immature neuron	Doublecortin (DCX)	Cytoplasm	Rabbit polyclonal	Abcam	ab15580, AB_443209	1:500
Astrocyte, glioma cell	GFAP	Intermediate filaments	Goat polyclonal	Santa Cruz Biotechnology	sc-8066, AB_2088494	1:1000
Astrocyte, glioma cell	S100 calcium binding protein B (S100B)	Nucleoplasm, cytoplasm	Mouse monoclonal	Millipore	MAB360, AB_11212597	1:1000
Glioma cell, neural stem cell	Neuroectodermal stem cell marker (Nestin)	Intermediate filaments	Rabbit polyclonal	Sigma-Aldrich	S2644, AB_477501	1:1000
Astrocyte, glioma cell, neural stem cell	Fatty acid binding protein 7 (FABP7)	Cytoplasm, nucleoplasm	Goat polyclonal	Santa Cruz Biotechnology	sc-21247, AB_650014	1:1000
Astrocyte, glioma cell, neural stem cell	HOP homeobox (HOPX)	Cytoplasm	Mouse monoclonal	Abcam	ab131137, AB_11157091	1:500
M1-phase dividing cell	Phospho-histone H3 (PH3)	Chromosomes	Rabbit polyclonal	Santa Cruz Biotechnology	sc-30216, AB_2120833	1:1000
M1-phase dividing neural stem cell	Phospho-vimentin (pVIM)	Intermediate filaments	Rabbit	Cell Signaling Technology	9706, AB_331748	1:500
T cell	Cluster of differentiation 3 (CD3)	Plasma membrane	Mouse monoclonal	Cell Signaling Technology	3877, AB_2216265	1:500
Cytotoxic T cell	Granzyme B	Cytoplasmic vesicles, secreted	Mouse monoclonal	Biolegend	344802, AB_2043995	1:500
Endothelial cell	VWF	Cytoplasmic vesicles, secreted	Rat monoclonal	GeneTex	GTX11089, AB_369097	1:250
Endothelial cell	Platelet and endothelial cell adhesion molecule 1 (CD31)	Plasma membrane	Mouse monoclonal	R&D Systems	MAB2906, AB_2263752	1:500
Apoptotic cells	Cleaved caspase 3 (CC3)	Cytoplasm, nucleoplasm	Mouse monoclonal	Santa Cruz Biotechnology	sc-365712, AB_10842026	1:500
Often amplified in glioma cells	EGFR	Plasma membrane	Rabbit polyclonal	Abcam	ab28364, AB_726362	1:250
Present in subset of glioma cells	EGFRvIII	Plasma membrane	Rabbit polyclonal	Cell Signaling Technology	9661, AB_2341188	1:500
Macrophages and microglia	Allograft inflammatory factor 1 (IBA1)	Cytoplasm	Rabbit monoclonal	Thermo Fisher Scientific	MA1-12693, AB_1074165	1:500
			Rabbit polyclonal	Cell Signaling Technology	64952, AB_2773018	1:500
				Wako	019-19741, AB_839504	1:500

continue growing in culture (Fig. 3g). The quality of GBOs and the extent to which they recapitulate the parent tumor should be assessed by immunohistology (Box 2 and Fig. 4a). Assays to determine whether GBOs are proliferating and to determine whether gene expression and mutational profiles match the patient tumors are described in Jacob et al.¹¹.

▲ CRITICAL STEP Cell-dense GBOs appear lighter by bright-field microscopy than necrotic tissue, although given enough time in culture, some cell-sparse necrotic pieces may become surrounded by growing tumor cells (Fig. 3i).

? TROUBLESHOOTING

Passaging GBOs ● Timing 1–2 h

▲ CRITICAL GBOs should be passaged once they reach approximately 1–2 mm in diameter (Fig. 3h) to avoid substantial necrotic cell death within the core.

▲ CRITICAL Dissection tools must be thoroughly washed and sterilized by autoclave between handling of different samples to avoid microbial contamination and cross-contamination between samples. Dissection scissors should be sharpened routinely to facilitate cutting without shredding the tissue.

- 17 Transfer GBOs to a 15-ml conical tube using a P1000 pipette with a wide-bore tip, let the GBOs sink to the bottom of the conical tube (usually in <30 s) and carefully aspirate the supernatant.
- 18 Wash once with glioblastoma dissection medium by letting GBOs sink to the bottom of the conical tube before carefully aspirating the supernatant.
- 19 Transfer GBOs to a glass dissection dish containing 10 ml of glioblastoma dissection medium within a laminar flow biosafety cabinet with a suitable dissection microscope.
- 20 Dissect each GBO into four pieces by sequential bisection using fine-spring dissection scissors (Fig. 3k,l).

▲ CRITICAL STEP Passaging by sequential bisection avoids cell dissociation that can lead to clonal selection and preserves cellular heterogeneity by maintaining cells from the core and periphery of the GBO in each piece. Passaging using enzymatic or non-enzymatic dissociation will destroy cell-cell interactions within GBOs.

? TROUBLESHOOTING

- 21 Collect GBO pieces in a 15-ml conical tube and wash three times with 10 ml of DMEM:F12 by letting GBO pieces sink to the bottom of the conical tube before carefully aspirating the supernatant.
- 22 Transfer the GBO pieces to a 6-well, flat-bottom, non-treated culture plate with 10–20 GBO pieces and 4 ml of GBO medium per well.
- 23 Return GBO pieces to culture on a CO₂-resistant orbital shaker rotating at 120 rpm within a 37 °C, 5% CO₂, 90% relative humidity sterile incubator. Repeat Steps 17–23 as required. Proceed to the next step to cryopreserve GBOs.

Cryopreservation of GBOs ● Timing 2–3 h

▲ CRITICAL GBOs should be cryopreserved within 4–8 weeks after successful generation to preserve low-passage samples for later experimentation.

▲ CRITICAL Each GBO sample should undergo STR profiling and mycoplasma testing before cryopreservation (recommendations for mycoplasma testing and STR profiling are described in the Tumor tissue section of Reagent setup). Mycoplasma can greatly affect tumor cell behavior⁵¹, and any GBO samples that test positive for mycoplasma are unusable for experimentation and should be disposed of or quarantined to prevent cross-contamination to other samples.

- 24 Transfer GBOs to a 15-ml conical tube using a P1000 pipette with a wide-bore tip.
- 25 Aspirate medium and wash once with glioblastoma dissection medium by letting GBOs sink to the bottom of the conical tube before carefully aspirating the supernatant.
- 26 Transfer GBOs to a glass dissection dish containing 10 ml of glioblastoma dissection medium within a laminar flow biosafety cabinet with a suitable dissection microscope.
- 27 Dissect GBOs into ~0.5-mm-diameter pieces by sequential bisection using fine-spring dissection scissors.

▲ CRITICAL STEP GBOs are cut to pieces no larger than 0.5 mm in diameter to facilitate perfusion with GBO-freezing medium. The size of GBO pieces is critical for cryopreservation, as larger pieces do not recover well.

- 28 Collect GBO pieces in a 15-ml conical tube and wash three times with 10 ml of DMEM:F12 by letting GBO pieces sink to the bottom of the conical tube before carefully aspirating the supernatant.
- 29 Transfer the GBO pieces to a 6-well, flat-bottom, non-treated culture plate with 10–20 GBO pieces and 4 ml of GBO medium with 10 μ M Y-27632 per well.
- 30 Culture the tumor pieces on a CO₂-resistant orbital shaker rotating at 120 rpm within a 37 °C, 5% CO₂, 90% relative humidity sterile incubator for 60 min.
▲ CRITICAL STEP Incubation with 10 μ M Y-27632 helps to increase cell viability during freezing.
- 31 Collect GBO pieces in a 15-ml conical tube using a P1000 pipette with a wide-bore tip.
- 32 Aspirate GBO medium with 10 μ M Y-27632, resuspend GBO pieces in 10 ml of GBO-freezing medium and incubate on a rocking platform shaker set to ~10 tilt cycles/min at room temperature for 5 min to let GBO-freezing medium fully perfuse the organoids.
▲ CRITICAL STEP In contrast to single-cell suspensions, GBO pieces are large and require a short incubation step in freezing medium to allow DMSO-containing medium to better penetrate cells. This incubation step helps to increase cell viability during freezing.
- 33 Aspirate GBO-freezing medium and resuspend GBO pieces in 2 ml of fresh GBO-freezing medium.
- 34 Transfer ~20 GBOs into each cryogenic vial containing 1 ml of GBO-freezing medium.
▲ CRITICAL STEP Pre-label cryogenic vials with sample identifying information, age, passage number and date. We recommend temperature- and ethanol-resistant labels to avoid loss of information during liquid nitrogen storage and vial recovery.
- 35 Place cryogenic vials containing GBO pieces into a CoolCell freezing container (any cell freezing container that cools at a rate of –1 °C/min is suitable) and place the container into a –80 °C freezer overnight.
▲ CRITICAL STEP Do not snap-freeze cryovials, as this will lead to poor viability.
- 36 Transfer the cryogenic vials containing GBO pieces to the air phase of liquid nitrogen (at or below –135 °C) for long-term storage.
▲ CRITICAL STEP Long-term storage in a temperature-stable liquid nitrogen tank is essential for frozen tissue viability. Avoid large fluctuations in temperature and always have a back-up plan for when the liquid nitrogen source or tank malfunctions.
■ PAUSE POINT Cryopreserved GBOs can be stored in liquid nitrogen indefinitely. We have successfully recovered GBOs cryopreserved for >2 years.

Thawing GBOs ● Timing 1 h

- 37 Locate the cryogenic vials from liquid nitrogen storage and place them on dry ice.
- 38 Immediately thaw the vials in a 37 °C water bath, gently swirling the tubes to ensure even thawing.
▲ CRITICAL STEP Vials should be thawed quickly and evenly at 37 °C and not left to warm past thawing to increase the viability of recovered GBOs.
- 39 Remove vials from the 37 °C water bath when only a small chunk of ice remains.
- 40 Sterilize vials with 70% (vol/vol) ethanol and place in a tube rack within a sterile biosafety cabinet.
- 41 Gently transfer GBOs to a 50-ml conical tube using a P1000 pipette with a wide-bore tip.
- 42 Add 10 ml of GBO medium with 10 μ M Y-27632 dropwise while swirling the tube to slowly dilute the DMSO-containing GBO-freezing medium.
▲ CRITICAL STEP Gradual recovery by slowly diluting away the DMSO within the freezing medium improves the viability of thawed organoids.
- 43 Aspirate the supernatant and add 2 ml of GBO medium with 10 μ M Y-27632.
- 44 Transfer the GBO pieces to a 6-well, flat-bottom, non-treated culture plate with 10–20 GBO pieces and 4 ml of GBO medium with 10 μ M Y-27632 per well (Fig. 3m, left).
- 45 Culture GBO pieces overnight in a 37 °C, 5% CO₂, 90% relative humidity sterile incubator without shaking.
- 46 The next day, replace medium with GBO medium without 10 μ M Y-27632 and transfer the culture plate to a CO₂-resistant orbital shaker rotating at 120 rpm within a 37 °C, 5% CO₂, 90% relative humidity sterile incubator.
- 47 Allow GBOs to recover for 1–2 weeks before using for experimentation. Properly cryopreserved and thawed GBOs should have a round morphology after 1–2 weeks (Fig. 3m, middle) and continue growing for >4 weeks (Fig. 3m, right).

? TROUBLESHOOTING

Preparation of CAR T cells ● Timing 1 h for thawing, 3 d for recovery and expansion

▲ **CRITICAL** All CAR T cells being compared must be prepared in parallel to limit variations in processing that could lead to inaccurate interpretations.

▲ **CRITICAL** T cell batches with roughly 30% expressing the CAR were used in our experiments. Keep this in mind when interpreting ratios of CAR T cells to tumor cells.

48 Prepare the culture vessel by adding 10 ml of T cell medium with 100 U/ml IL-2 to a T75 flask and leaving the T75 flask in a 37 °C, 5% CO₂, 90% relative humidity sterile incubator to equilibrate until Step 61. Prepare a separate T75 flask for each different CAR T cell you will use for co-culture with GBOs.

▲ **CRITICAL STEP** Prepare the T cell medium with fresh IL-2 by adding single-use sterile aliquots of IL-2 stored at or below −80 °C to the appropriate amount of T cell medium and store at 4 °C for ≤1 week to ensure optimal cytokine activity. Avoid pre-warming media to 37 °C to minimize cytokine degradation. Consistent storage and usage of IL-2 is essential to obtaining optimal and reproducible results.

49 Locate cryogenic vials containing appropriate control and target CAR T cells from liquid nitrogen storage and place them on dry ice. Refer to the Controls section in Experimental design for suggested controls to include with each experiment.

50 Immediately thaw vials in a 37 °C water bath, gently swirling the tubes to ensure even thawing.

▲ **CRITICAL STEP** Vials should be thawed quickly and evenly at 37 °C and not left to warm past thawing to increase the viability of recovered cells.

51 Remove vials from the 37 °C water bath when only a small chunk of ice remains.

52 Sterilize vials with 70% (vol/vol) ethanol and place in a tube rack within a sterile biosafety cabinet.

53 Gently transfer contents of cryogenic vials to a 50-ml conical tube using a P1000 pipette.

▲ **CRITICAL STEP** Use separate pipette tips, conical tubes, serological pipettes and aspiration pipettes for each different type of CAR T cell to avoid cross-contamination between samples.

54 Add 10 ml of T cell medium dropwise while swirling the tube to slowly dilute the DMSO-containing freezing medium.

▲ **CRITICAL STEP** Gradual recovery by slowly diluting away the DMSO within the freezing medium improves the viability of thawed CAR T cells.

55 Centrifuge conical tubes containing CAR T cells at 300g for 5 min to pellet.

56 After centrifugation, carefully aspirate the supernatant and add 5 ml of T cell medium with 100 U/ml IL-2 to the conical tube.

57 Gently resuspend the CAR T cell pellet using a 5-ml pipette and pipette aid.

58 Transfer 5 ml of CAR T cells to the T75 flasks prepared in Step 48.

59 Culture flasks for 24 h in a 37 °C, 5% CO₂, 90% relative humidity sterile incubator.

▲ **CRITICAL STEP** Culturing the thawed CAR T cells for 24 h in T cell medium with 100 U/ml IL-2 greatly increases cell viability and expansion.

■ **PAUSE POINT** CAR T cells are cultured in T cell medium with 100 U/ml IL-2 for 24 h before proceeding.

60 Prepare new T75 flasks with 10 ml of T cell medium without IL-2 for each CAR T cell flask cultured in Step 59 and leave the T75 flasks in a 37 °C, 5% CO₂, 90% relative humidity sterile incubator to equilibrate until Step 65.

61 Collect CAR T cells from T75 flasks into 15-ml conical tubes.

62 Centrifuge conical tubes containing CAR T cells at 300g for 5 min to pellet.

63 After centrifugation, carefully aspirate the supernatant and add 5 ml of fresh T cell medium without IL-2 to each conical tube.

64 Gently resuspend the CAR T cell pellets using a 5-ml pipette and pipette aid.

65 Transfer 5 ml of CAR T cells to the T75 flasks prepared in Step 60.

66 Culture flasks for an additional 48 h in a 37 °C, 5% CO₂, 90% relative humidity sterile incubator.

▲ **CRITICAL STEP** Culturing the CAR T cells for 48 h in T cell medium without IL-2 is necessary to reduce the effects of IL-2 stimulation. This is imperative when comparing CAR T cell proliferation and cytokine release between control and target antigen groups, as IL-2 is a potent CAR T cell activator that is released when CAR T cells engage their target antigen.

▲ **CRITICAL STEP** After 48 h, sample 1 ml of the CAR T cell medium for mycoplasma testing. Verify that each batch of CAR T cells is negative for mycoplasma before proceeding. Do not sample before 48 h, as mycoplasma may be difficult to detect soon after thawing.

▲ CRITICAL STEP CAR T cells must be cultured in T cell medium for 48 h before proceeding.
? TROUBLESHOOTING

Co-culture of GBOs with CAR T cells ● Timing 1–5 d

▲ CRITICAL Verify expression of the target antigen in GBOs by immunohistology as described in Box 2 before proceeding with co-culture (Fig. 6b).

67 Transfer GBOs in culture or from Step 47 to a 15-ml conical tube, let them sink to the bottom and carefully aspirate the supernatant. Use a separate conical tube for different GBO samples.

68 Wash GBOs three times with 10 ml of DMEM:F12 by letting the GBOs sink to the bottom of the conical tube before carefully aspirating the supernatant.

69 Add 5 ml of T cell medium to the 15-ml conical tube.

▲ CRITICAL STEP The CAR T cell and GBO co-culture assay is performed in T cell medium as reported previously for cytotoxicity assays in the literature²² to ensure optimal activity of the T cells. GBOs tolerate T cell medium during the duration of this experiment with no obvious increase in cell death in control conditions (Fig. 6h). GBO proliferation may decrease because of the absence of insulin and other nutrients, but this does not affect the experimental purpose of assessing CAR T cell target specificity and killing.

70 Transfer a single GBO into each well of a 24-well, ultra-low-attachment culture plate containing 250 µl of T cell medium using a P1000 pipette with a wide-bore tip. Use at least three GBOs for each treatment group but keep individual GBOs in separate wells.

▲ CRITICAL STEP Use similarly sized GBOs between samples and treatment groups to minimize the effects of initial size on the experimental outcomes. Because measuring the size of GBOs by volume or weight is difficult, estimate the size of GBOs by taking a bright-field image and measuring the 2D area.

▲ CRITICAL STEP Place each GBO into an individual well to control and account for differences between GBOs.

▲ CRITICAL STEP If carrying out analysis of cytokines in Step 83, take aliquots of appropriate medium to use as controls (see Step 83A(ii)).

71 Place 24-well culture plates containing GBOs onto a CO₂-resistant orbital shaker rotating at 120 rpm within a 37 °C, 5% CO₂, 90% relative humidity sterile incubator until Step 80.

72 Separately dissociate three similarly sized GBOs by following the instructions included with the postnatal neuron dissociation kit (additional materials may be required).

▲ CRITICAL STEP Enzyme incubation timing may need to be optimized for each sample to reach a single-cell suspension.

73 Perform a cell count manually or by following the instructions included with an automated cell counter to estimate the cell number in each GBO (Fig. 2e).

▲ CRITICAL STEP Knowledge of the cell count within each similarly sized GBO is important when determining how many CAR T cells to add to reach the desired ratio of CAR T cells to tumor cells.

74 Collect CAR T cells (from Step 66) from T75 flasks into 15-ml conical tubes.

75 Centrifuge conical tubes containing CAR T cells at 300g for 5 min to pellet.

76 After centrifugation, carefully aspirate the supernatant and add 2 ml of fresh T cell medium to each conical tube.

77 Gently resuspend the CAR T cell pellets using a P1000 pipette.

78 Count the cell number manually or by following the instructions included with an automated cell counter.

▲ CRITICAL STEP Include trypan blue stain when counting cells to assess the percentage of dead cells. A count of >5–10% dead cells is a sign of unhealthy T cells that could lead to suboptimal results.

79 Using the estimated cell count for each GBO (obtained in Step 73), dilute the CAR T cell suspension so that 250 µl contains a tenth of the number of cells in a single GBO. This is to achieve a 1:10 ratio of CAR T cells to GBO cells.

▲ CRITICAL STEP The ratio of CAR T cells to GBOs can be adjusted, but keep in mind that a higher ratio will likely result in more rapid killing. The optimal ratio may need to be determined by experimentation.

80 Add 250 µl of diluted CAR T cell suspension to each well of the 24-well plates containing GBOs prepared in Steps 67–71.

81 Transfer the culture plate to a CO₂-resistant orbital shaker rotating at 120 rpm within a 37 °C, 5% CO₂, 90% relative humidity sterile incubator.

- 82 Co-culture GBOs with CAR T cells for 1–5 d; some of the downstream assays described in the next step can be carried out on samples of medium or GBOs during this co-culture.

? TROUBLESHOOTING

Downstream assays ● Timing variable

- 83 During co-culture, the medium can be sampled and evaluated for cytokines released during T cell activation (option A). After co-culture, T cell invasion and proliferation (option B), target tumor antigen loss (option C) and tumor cell killing (option D) can be assessed by following the appropriate option. Each option also involves further downstream analysis (Box 1) and analysis by immunohistology (Box 2), as detailed.

▲ CRITICAL STEP All samples that are being compared should be processed in parallel using identical conditions to limit the effect of differences in preparation on result interpretation.

(A) Analysis of cytokines released by activated T cells

- (i) Aliquot 50 µl of T cell medium and GBO medium separately as negative controls.

▲ CRITICAL STEP Always include negative controls with every experiment to control for any cytokines already present in the medium.

- (ii) Collect 50 µl of medium from each well containing individual GBOs in T cell medium from Step 70 as the baseline sample in a 1.5-ml microcentrifuge tube.

- (iii) Collect 50 µl of medium after the addition of CAR T cells and after every 12–24 h. Add 50 µl of T cell medium to each well to make up for the volume sampled.

▲ CRITICAL STEP Replacing sampled medium with fresh medium is critical to avoid incidental concentration of cytokines.

- (iv) Centrifuge 1.5-ml microcentrifuge tubes at 2,000g for 5 min to pellet cells and debris.

▲ CRITICAL STEP Removing cell debris improves reliability of the ELISA reaction and ensures that only extracellular cytokines are measured.

- (v) After centrifugation, carefully aspirate the supernatant and add to a new 1.5-ml centrifuge tube.

- (vi) Snap-freeze the tubes in dry ice–isopropanol and store in a –80 °C freezer until ready for analysis.

■ PAUSE POINT Frozen medium samples can be stored at –80 °C for >2 months. Alternatively, fresh medium samples can be stored at 4 °C for ≤3 d before analysis.

- (vii) Thaw medium samples on ice and perform ELISA on tenfold diluted medium using the instructions included with the ELISA kit (Fig. 6e). Recommended ELISA kits are included in the Materials section (additional materials may be required), although other ELISA kits may be used as a substitute.

▲ CRITICAL STEP In most cases it is necessary to dilute the medium tenfold to remain within the working detection range of the ELISA. Optimization using serial dilutions may be necessary to achieve interpretable results.

(B) Analysis of T cell activation and proliferation

- (i) Process GBOs and perform immunohistology for CD3 and KI67 on samples co-cultured with control and target CAR T cells as described in Boxes 1 and 2.

- (ii) Image whole tissue sections using a confocal microscope (Fig. 6f).

- (iii) Using the cell-counter tool in Image J, quantify the number of CD3/KI67-double-positive cells and total CD3-positive cells.

▲ CRITICAL STEP Other software with cell counting functions or automated detection can be substituted for Image J.

- (iv) Divide the number of CD3/KI67-double-positive cells by the total number of CD3-positive cells to get the fraction of proliferating T cells.

▲ CRITICAL STEP Take measurements from multiple GBOs and regions within the same GBO and average to get a more representative measurement.

? TROUBLESHOOTING

(C) Analysis of target antigen loss

- (i) Process GBOs and perform immunohistology for the target antigen (e.g., EGFRvIII) and DAPI on samples co-cultured with control and target CAR T cells as described in Boxes 1 and 2. The addition of a general tumor cell marker (e.g., SOX2 or EGFR) may help to exclude non-tumor cells within GBOs, such as immune cells, during downstream

quantification. In the case of EGFRvIII, it is helpful to also analyze EGFR expression to assess CAR T target specificity.

- (ii) Image whole tissue sections using a confocal microscope (Fig. 6g).
- (iii) Quantify the number of antigen-positive cells and total tumor cells using the cell-counter tool in Image J.
- (iv) Divide the number of antigen-positive cells by the total number of tumor cells to get the fraction of antigen-positive tumor cells.

▲ CRITICAL STEP Take measurements from multiple GBOs and regions within the same GBO and average them to get a more representative measurement.

- (v) Alternatively, for difficult-to-quantify markers (e.g., heterogeneously expressed cell surface proteins), manually outline the GBO image and measure the mean gray value of the fluorescence intensity of the target antigen in Image J as an estimate for target antigen abundance. Subtract the background fluorescence signal from each measurement for more accurate results (refer to Figure 7D in Jacob et al.¹¹ for example results).

▲ CRITICAL STEP Perform immunohistology in parallel and use identical microscope settings when imaging to more accurately compare fluorescence intensity between experimental groups.

? TROUBLESHOOTING

(D) Analysis of target cell killing

▲ CRITICAL There are many methodologies for assessing cell death in GBOs, such as cleaved caspase 3 (CC3) staining, TUNEL staining, loading cells with vital dyes and chromium release, but we limited this protocol to CC3 staining as an example because it allows simultaneous staining for target antigens and other cell markers to quantify the specificity of target cell killing and visualize the cytoarchitecture of GBOs during the assay. Although TUNEL staining may provide a more accurate quantification of cell death, we have not optimized this procedure. Unlike single-cell suspensions, GBOs are difficult to evenly load with vital cell dyes or chromium as a readout for cell death. These techniques may prove useful for more high-throughput analysis of cell killing if optimized.

- (i) Process GBOs and perform immunohistology for the target antigen (e.g., EGFRvIII), CC3 and DAPI on samples co-cultured with control and target CAR T cells as described in Boxes 1 and 2. The addition of a general tumor cell marker (e.g., SOX2 or EGFR) may help to exclude non-tumor cells within GBOs, such as immune cells, during downstream quantification. In the case of EGFRvIII, it is helpful to also analyze EGFR expression to assess CAR T target specificity.
- (ii) Image whole tissue sections using a confocal microscope (Fig. 6h).
- (iii) Quantify the number of antigen-positive cells, antigen-negative cells and total tumor cells using the cell-counter tool in Image J.
- (iv) Divide the number of antigen and CC3-double-positive cells by the total number of antigen-positive tumor cells to get the fraction of antigen-positive tumor cells that are dying.

▲ CRITICAL STEP Take measurements from multiple GBOs and regions within the same GBO and average them to get a more representative measurement.

▲ CRITICAL STEP CC3 expression is lost once the cell is dead. Analyze GBOs at several time points to catch cells as they are dying.

- (v) As an alternative, manually outline the GBO image and measure the mean gray value of the fluorescence intensity of CC3 in Image J as an estimate for CC3 expression. Subtract the background fluorescence signal from each measurement for more accurate results (refer to Figure 7C in Jacob et al.¹¹ for example results).

▲ CRITICAL STEP Perform immunohistology in parallel and use identical microscope settings when imaging to more accurately compare experimental groups.

- (vi) To assess CAR T cell specificity, divide the number of antigen-negative/CC3-positive cells by the total number of antigen-negative tumor cells to get the fraction of antigen-negative tumor cells that are dying.

? TROUBLESHOOTING

Troubleshooting

Troubleshooting advice can be found in Table 2.

Table 2 | Troubleshooting table

Step	Problem	Possible reason	Solution
5	Tumor tissue falls apart easily during dissection	Poor quality of initial tumor sample	Communicate with neurosurgeons and pathologists to obtain tissue that is cell dense and does not contain substantial necrosis or surrounding brain tissue
16	Micro-dissected tumor pieces do not form round organoids after 2–4 weeks in culture	Poor quality of initial tissue sample	Communicate with neurosurgeons and pathologists to obtain tissue that is cell dense and does not contain substantial necrosis or surrounding brain tissue
		Prolonged time between tumor resection and tissue processing	Begin processing the tumor tissue within 2 h after initial resection to maximize tissue viability
		Suboptimal tissue processing	Quickly and carefully micro-dissect tumor tissue and remove pieces that contain substantial necrosis, blood clots or surrounding brain tissue
		Pathogen contamination of cultures	Ensure that all dissection tools are sterilized by autoclave, proper sterile technique is used during tissue acquisition and antibiotic-antimycotic is used during tissue dissection
20	GBOs contain substantial dead tissue at the core when dissecting	GBOs were left to grow too large and have developed a necrotic core	Passage GBOs regularly when they reach 1–2 mm in diameter
47	GBOs do not recover well after thawing	GBOs were not cut to ≤ 0.5 -mm-diameter pieces before freezing	Cut GBOs to ≤ 0.5 -mm-diameter pieces before freezing to improve DMSO penetration into all cells
		GBOs were not preincubated with 10 μ M Y-27632	Pre-incubate GBOs in GBO medium with 10 μ M Y-27632 for 1 h before freezing
		GBOs were not slowly recovered in GBO medium with 10 μ M Y-27632	Recover GBOs by adding GBO medium with 10 μ M Y-27632 dropwise while swirling the tube to slowly dilute the DMSO-containing GBO-freezing medium
Box 2	Low-intensity or no fluorescence signal	Incorrect primary and secondary antibody combinations	Ensure that secondary antibodies are matched against the correct species of primary antibody
		Decreased fluorescence from photobleaching	Protect tissue from light during secondary antibody incubation and storage
		The antigen is not expressed in the sample	Perform immunohistology for other markers
		Suboptimal laser settings on the confocal microscope	Optimize laser settings on the confocal microscope
66	CAR T cells do not expand in culture	T cells have undergone exhaustion from proliferation	Use frozen CAR T cells that have not been passaged many times already
82, 83B	CAR T cells do not invade and expand in the presence of GBOs	Tumor cells within GBOs do not express the target antigen	Perform immunohistology for the target antigen to verify expression in GBOs
		Only a small fraction of T cells expresses the CAR	Use batches of T cells with $\geq 30\%$ of cells expressing the CAR
83C, 83D	No target antigen loss or tumor cell killing after co-culture of CAR T cells with GBOs	Tumor cells within GBOs do not express the target antigen	Perform immunohistology for the target antigen to verify expression in GBOs
		Only a small fraction of T cells expresses the CAR	Use batches of T cells with $\geq 30\%$ of cells expressing the CAR

Timing

Steps 1–16, establishment of GBO culture from resected tumor tissue: 2–4 h for tissue processing and 2–4 weeks for organoid establishment

Steps 17–23, passaging GBOs: 1–2 h

Steps 24–36, cryopreservation of GBOs: 2–3 h

Steps 37–47, thawing GBOs: 1 h

Steps 48–66, preparation of CAR T cells for co-culture: 1 h for thawing, 3 d for recovery and expansion
 Steps 67–82, co-culture of GBOs with CAR T cells: 1–5 d
 Step 83A–D, downstream assays: variable
 Box 1, processing glioblastoma tissue and GBOs for downstream analyses: 2 d
 Box 2, immunofluorescence staining of glioblastoma tumors and organoids: 2 d
 Box 3, detection and quantification of hypoxia gradients and actively proliferating cells in GBOs: 2–3 d

Anticipated results

The protocol described here enables the user to generate GBOs from primary and recurrent/residual resected glioblastoma tumor tissue and co-culture GBOs with CAR T cells to evaluate cell killing and target specificity. We have generated GBOs from 95.7% of primary tumors and 75.0% of recurrent/residual tumors for an overall success rate of 91.4% (Fig. 2a)¹¹. We have had success making GBOs from tumors containing a wide range of mutations commonly found in glioblastomas (Fig. 2b)¹¹. Owing to the rapid generation of GBOs in 2–4 weeks after surgery, we have an average time to establish a GBO biobank of 27 d (Fig. 2c)¹¹. GBOs grow at different rates and have different cell numbers depending on the size and density of the tumor cells within them (Fig. 2d,e)¹¹. Although the results will vary depending on the tumor-specific growth characteristics of each sample and the CAR T cells used, there are general results one should expect for GBO generation and CAR T cell co-culture.

Evaluation of successful GBO generation and cryopreservation

Successful GBO generation can be assessed visually by bright-field and confocal microscopy. GBOs should always be compared to their primary tumors to assess recapitulation of important characteristics, including proliferation rates, marker immunohistology, transcriptional signatures and genomic mutations. Be sure to evaluate at least five different GBOs at multiple timepoints to assess and account for sample heterogeneity. Optimal tumor tissue is resected en bloc from cell-dense regions of the tumor with minimal necrosis, hemorrhage or surrounding brain tissue (Fig. 3c). Micro-dissected tumor pieces should round up and form organoids with a fairly homogeneous off-white color with sharp borders and few floating single cells within 2–4 weeks of culture (Fig. 3g). GBOs should continue growing for ≥6 months with proper culture and passaging by sequential bisection (Fig. 3k,l). Although volumetric and weight measurements are difficult, GBO growth can be assessed by measuring the increase in 2D area over time (Fig. 2d). GBOs should retain the cellular heterogeneity and proliferation rates of parent tumors as evidenced by immunohistology for various markers for glioma stem, progenitor and differentiated cells (Fig. 4a). Successful GBOs should also recapitulate the transcriptomes and mutations of their parent tumors (refer to Figs. 3, S3, 4 and S4 in Jacob et al.¹¹). GBOs should retain immune cells, such as IBA1⁺ tumor-associated macrophages/microglia for ≥6 weeks, although their numbers will vary between tumors and always decrease with time because of death and dilution by proliferative tumor cells (Fig. 4b,c). GBOs will often also retain endothelial cells and vasculature, although their abundance may vary greatly between tumor samples, and their functionality has not been well characterized (Fig. 4d,e). Unsuccessful GBO generation is most likely a product of poor-quality resected tumor samples that contain few viable tumor cells and abundant necrosis. Unsuccessful cultures are often composed of tumor-sparse tissue (Fig. 3f) and/or necrotic pieces (Fig. 3l, red arrow). Failed GBO cultures are noticeable as pieces that fail to round up and grow after 2–4 weeks (Fig. 3j).

Successful cryopreservation of GBOs can be evaluated by following recovery after thawing. Thawed GBOs should appear as solid pieces that begin to round up and grow within 2 weeks in culture (Fig. 3m). Thawed GBOs may have fuzzy borders with some dead floating cells immediately after thawing, but the borders should become sharp as they proliferate under orbital shaking conditions. Growth of thawed GBOs can be assessed by measuring the increase in 2D area over time, which will increase on average from more than one- to threefold over 4 weeks, depending on tumor-specific characteristics and the quality of cryopreservation (Fig. 2d). Successfully cryopreserved and thawed GBOs should be cell dense and retain similar marker immunohistology to their parent tumors and GBOs before cryopreservation (Fig. 4a) with few apoptotic cells (refer to Figure S1, A and B in Jacob et al.¹¹). We recommend testing GBO recovery after cryopreservation to assess the quality of the biobank for each sample.

Evaluation of hypoxia gradients and actively proliferating cells in GBOs

Large GBOs (>2 mm in diameter) will contain increased hypoxia toward the core with a higher density of proliferating cells toward the GBO surface (Fig. 5a,b). Pulsing GBOs with EdU for 1 h will label cells in S-phase of the cell cycle (Fig. 5c,d). EdU will often co-localize with glioma stem and progenitor cell markers, such as NESTIN, HOP homeobox (HOPX), OLIG2 and doublecortin (DCX) (Fig. 5d). Immunohistology for phospho-vimentin and phospho-histone H3 will mark cells in M-phase of the cell cycle and reveal diverse morphologies of actively dividing cells, which often resemble cells of the developing human brain (Fig. 5e), such as radial glia, which have been described in glioblastomas^{52,53}.

Evaluation of successful GBO co-culture with CAR T cells

For optimal results, verify expression of CAR T cell target antigen in parent tumors and GBOs (Fig. 6b) and include control CAR T cells that recognize an antigen, such as CD19, not expressed by parent tumors or GBOs. By bright-field microscopy, co-culture of GBOs with CAR T cells should show variable T cell proliferation and invasion into GBOs depending on the presence of the target antigen; T cells will proliferate in clusters around GBOs that express the target antigen (Fig. 6c,d). CAR T cells that do not recognize an antigen within GBOs should not substantially increase their proliferation rate and kill any tumor cells. CAR T cells that recognize an antigen on tumor cells within GBOs will invade, proliferate and kill tumor cells as evidenced by loss of the target antigen and an increase in CC3 immunoreactivity (Fig. 6g,h). CAR T cells that recognize antigen will proliferate and be found predominately at the periphery of GBOs in clusters as CD3/KI67-double-positive cells (Fig. 6f). The length of co-culture needed to observe killing will depend on many factors, including the abundance of target antigen-expressing tumor cells, the binding kinetics of the CAR and variations between different GBO samples. Increased release of cytokines (e.g., IL-2, IFN γ and TNF α) from activated T cells should occur within 24–72 h after co-culture in the presence of the target antigen (Fig. 6e)¹¹. In our experiments with a ratio of 1:10 CAR T cells to GBO cells, we observed a spike in IL-2 levels after 24 h, a peak in TNF α levels at 24 h with sustained secretion up to 72 h and continuously increasing levels of IFN γ up to 72 h after co-culture¹¹. The timeline and levels of cytokines may vary depending on antigen abundance and CAR T cell ratio, health and specificity.

Reporting Summary

Further information on research design is available in the Nature Research Reporting Summary linked to this article.

References

1. Boj, S. F. et al. Organoid models of human and mouse ductal pancreatic cancer. *Cell* **160**, 324–338 (2015).
2. Broutier, L. et al. Human primary liver cancer-derived organoid cultures for disease modeling and drug screening. *Nat. Med.* **23**, 1424–1435 (2017).
3. Gao, D. et al. Organoid cultures derived from patients with advanced prostate cancer. *Cell* **159**, 176–187 (2014).
4. Kopper, O. et al. An organoid platform for ovarian cancer captures intra- and interpatient heterogeneity. *Nat. Med.* **25**, 838–849 (2019).
5. Lee, S. H. et al. Tumor evolution and drug response in patient-derived organoid models of bladder cancer. *Cell* **173**, 515–528.e17 (2018).
6. Sachs, N. et al. A living biobank of breast cancer organoids captures disease heterogeneity. *Cell* **172**, 373–386.e10 (2018).
7. Yan, H. H. N. et al. A comprehensive human gastric cancer organoid biobank captures tumor subtype heterogeneity and enables therapeutic screening. *Cell Stem Cell* **23**, 882–897.e11 (2018).
8. Yao, Y. et al. Patient-derived organoids predict chemoradiation responses of locally advanced rectal cancer. *Cell Stem Cell* **26**, 17–26.e6 (2020).
9. Tuveson, D. & Clevers, H. Cancer modeling meets human organoid technology. *Science* **364**, 952–955 (2019).
10. Clevers, H. & Tuveson, D. A. Organoid models for cancer research. *Annu. Rev. Cancer Biol.* **3**, 223–234 (2019).
11. Jacob, F. et al. A patient-derived glioblastoma organoid model and biobank recapitulates inter- and intra-tumoral heterogeneity. *Cell* **180**, 188–204.e22 (2020).
12. Qian, X. et al. Generation of human brain region-specific organoids using a miniaturized spinning bioreactor. *Nat. Protoc.* **13**, 565–580 (2018).
13. Qian, X. et al. Brain-region-specific organoids using mini-bioreactors for modeling ZIKV exposure. *Cell* **165**, 1238–1254 (2016).

14. Han, S. H. et al. Long-term culture-induced phenotypic difference and efficient cryopreservation of small intestinal organoids by treatment timing of Rho kinase inhibitor. *World J. Gastroenterol.* **23**, 964–975 (2017).
15. Li, X., Meng, G., Krawetz, R., Liu, S. & Rancourt, D. E. The ROCK inhibitor Y-27632 enhances the survival rate of human embryonic stem cells following cryopreservation. *Stem Cells Dev.* **17**, 1079–1085 (2008).
16. Shi, J. & Wei, L. Rho kinase in the regulation of cell death and survival. *Arch. Immunol. Ther. Exp. (Warsz)* **55**, 61–75 (2007).
17. Tilson, S. G. et al. ROCK inhibition facilitates in vitro expansion of glioblastoma stem-like cells. *PLoS One* **10**, e0132823 (2015).
18. June, C. H., O'Connor, R. S., Kawalekar, O. U., Ghassemi, S. & Milone, M. C. CAR T cell immunotherapy for human cancer. *Science* **359**, 1361–1365 (2018).
19. Newick, K., O'Brien, S., Moon, E. & Albelda, S. M. CAR T cell therapy for solid tumors. *Annu. Rev. Med.* **68**, 139–152 (2017).
20. Goff, S. L. et al. Pilot trial of adoptive transfer of chimeric antigen receptor-transduced T cells targeting EGFRvIII in patients with glioblastoma. *J. Immunother.* **42**, 126–135 (2019).
21. O'Rourke, D. M. et al. A single dose of peripherally infused EGFRvIII-directed CAR T cells mediates antigen loss and induces adaptive resistance in patients with recurrent glioblastoma. *Sci. Transl. Med.* **9**, eaaa0984 (2017).
22. Johnson, L. A. et al. Rational development and characterization of humanized anti-EGFR variant III chimeric antigen receptor T cells for glioblastoma. *Sci. Transl. Med.* **7**, 275ra222 (2015).
23. Schnalzger, T. E. et al. 3D model for CAR-mediated cytotoxicity using patient-derived colorectal cancer organoids. *EMBO J.* **38**, e100928 (2019).
24. Neftel, C. et al. An integrative model of cellular states, plasticity, and genetics for glioblastoma. *Cell* **178**, 835–849.e21 (2019).
25. Patel, A. P. et al. Single-cell RNA-seq highlights intratumoral heterogeneity in primary glioblastoma. *Science* **344**, 1396–1401 (2014).
26. Kong, W. J. et al. CellTagging: combinatorial indexing to simultaneously map lineage and identity at single-cell resolution. *Nat. Protoc.* **15**, 750–772 (2020).
27. Cattaneo, C. M. et al. Tumor organoid-T-cell coculture systems. *Nat. Protoc.* **15**, 15–39 (2020).
28. Dijkstra, K. K. et al. Generation of tumor-reactive T cells by co-culture of peripheral blood lymphocytes and tumor organoids. *Cell* **174**, 1586–1598.e12 (2018).
29. Ledur, P. F., Onzi, G. R., Zong, H. & Lenz, G. Culture conditions defining glioblastoma cells behavior: what is the impact for novel discoveries? *Oncotarget* **8**, 69185–69197 (2017).
30. Lee, J. et al. Tumor stem cells derived from glioblastomas cultured in bFGF and EGF more closely mirror the phenotype and genotype of primary tumors than do serum-cultured cell lines. *Cancer Cell* **9**, 391–403 (2006).
31. Patrizii, M., Bartucci, M., Pine, S. R. & Sabaawy, H. E. Utility of glioblastoma patient-derived orthotopic xenografts in drug discovery and personalized therapy. *Front. Oncol.* **8**, 23 (2018).
32. Qian, X., Nguyen, H. N., Jacob, F., Song, H. & Ming, G. L. Using brain organoids to understand Zika virus-induced microcephaly. *Development* **144**, 952–957 (2017).
33. Bian, S. et al. Genetically engineered cerebral organoids model brain tumor formation. *Nat. Methods* **15**, 631–639 (2018).
34. Ogawa, J., Pao, G. M., Shokhirev, M. N. & Verma, I. M. Glioblastoma model using human cerebral organoids. *Cell Rep.* **23**, 1220–1229 (2018).
35. Hubert, C. G. et al. A three-dimensional organoid culture system derived from human glioblastomas recapitulates the hypoxic gradients and cancer stem cell heterogeneity of tumors found in vivo. *Cancer Res.* **76**, 2465–2477 (2016).
36. Yi, H. G. et al. A bioprinted human-glioblastoma-on-a-chip for the identification of patient-specific responses to chemoradiotherapy. *Nat. Biomed. Eng.* **3**, 509–519 (2019).
37. Hovinga, K. E. et al. Inhibition of notch signaling in glioblastoma targets cancer stem cells via an endothelial cell intermediate. *Stem Cells* **28**, 1019–1029 (2010).
38. Shimizu, F., Hovinga, K. E., Metzner, M., Soulet, D. & Tabar, V. Organotypic explant culture of glioblastoma multiforme and subsequent single-cell suspension. *Curr. Protoc. Stem Cell Biol.* Ch. 3, Unit 3.5 (2011).
39. Merz, F. et al. Organotypic slice cultures of human glioblastoma reveal different susceptibilities to treatments. *Neuro Oncol.* **15**, 670–681 (2013).
40. Parker, J. J., Lizarraga, M., Waziri, A. & Foshay, K. M. A human glioblastoma organotypic slice culture model for study of tumor cell migration and patient-specific effects of anti-invasive drugs. *J. Vis. Exp.* e53557 (2017).
41. Herrera-Perez, M., Voytik-Harbin, S. L. & Rickus, J. L. Extracellular matrix properties regulate the migratory response of glioblastoma stem cells in three-dimensional culture. *Tissue Eng Part A* **21**, 2572–2582 (2015).
42. Huang, L. E. Friend or foe—IDH1 mutations in glioma 10 years on. *Carcinogenesis* **40**, 1299–1307 (2019).
43. Abud, E. M. et al. iPSC-derived human microglia-like cells to study neurological diseases. *Neuron* **94**, 278–293.e9 (2017).
44. Cakir, B. et al. Engineering of human brain organoids with a functional vascular-like system. *Nat. Methods* **16**, 1169–1175 (2019).
45. Lin, Y. T. et al. APOE4 causes widespread molecular and cellular alterations associated with Alzheimer's disease phenotypes in human iPSC-derived brain cell types. *Neuron* **98**, 1141–1154.e7 (2018).
46. Pham, M. T. et al. Generation of human vascularized brain organoids. *Neuroreport* **29**, 588–593 (2018).

47. Porter, D. L., Levinu, B. L., Kalos, M., Bagg, A. & June, C. H. Chimeric antigen receptor-modified T cells in chronic lymphoid leukemia. *N. Engl. J. Med.* **365**, 725–733 (2011).
48. Jonkman, J., Brown, C. M., Wright, G. D., Anderson, K. I. & North, A. J. Tutorial: guidance for quantitative confocal microscopy. *Nat. Protoc.* **15**, 1585–1611 (2020).
49. Karsy, M., Albert, L., Tobias, M. E., Murali, R. & Jhanwar-Uniyal, M. All-trans retinoic acid modulates cancer stem cells of glioblastoma multiforme in an MAPK-dependent manner. *Anticancer Res.* **30**, 4915–4920 (2010).
50. Hobro, A. J. & Smith, N. I. An evaluation of fixation methods: spatial and compositional cellular changes observed by Raman imaging. *Vib. Spectrosc.* **91**, 31–45 (2017).
51. Drexler, H. G. & Uphoff, C. C. Mycoplasma contamination of cell cultures: incidence, sources, effects, detection, elimination, prevention. *Cytotechnology* **39**, 75–90 (2002).
52. Bhaduri, A. et al. Outer radial glia-like cancer stem cells contribute to heterogeneity of glioblastoma. *Cell Stem Cell* **26**, 48–63.e6 (2020).
53. Wang, R. et al. Adult human glioblastomas harbor radial glia-like cells. *Stem Cell Reports* **14**, 338–350 (2020).
54. Brennan, C. W. et al. The somatic genomic landscape of glioblastoma. *Cell* **155**, 462–477 (2013).

Acknowledgements

We thank all patients who generously donated tissue. We thank members of the Ming and Song laboratories for comments and suggestions, B. Tamsamrit and E. LaNoce for technical support, J. Schnoll for lab coordination, and D. O'Rourke, M. Nasrallah and others in the Departments of Neurosurgery and Pathology at the Hospital of the University of Pennsylvania for assistance with tissue acquisition. This work was supported by the Glioblastoma Translational Center of Excellence at the Abramson Cancer Center at the University of Pennsylvania, grants from the National Institutes of Health (R37NS047344 and R35NS116843 to H.S., R35NS097370 and U19AI131130 to G.-I.M.), the Sheldon G. Adelson Medical Research Foundation (to G.-I.M.) and the Pennsylvania Department of Health (to G.-I.M.).

Author contributions

F.J. developed the procedures to generate, culture and biobank GBOs and to co-culture GBOs with CAR T cells and produced the sample data. F.J., G.-I.M. and H.S. conceived the project and wrote the manuscript.

Competing interests

The authors declare no competing interests.

Additional information

Supplementary information is available for this paper at <https://doi.org/10.1038/s41596-020-0402-9>.

Correspondence and requests for materials should be addressed to F.J., G.-I.M. or H.S.

Peer review information *Nature Protocols* thanks Lisa Ebert, Henner Farin, Guillermo Gomez, Yanhong Shi and Ali G Turhan for their contribution to the peer review of this work.

Reprints and permissions information is available at www.nature.com/reprints.

Publisher's note Springer Nature remains neutral with regard to jurisdictional claims in published maps and institutional affiliations.

Received: 17 March 2020; Accepted: 20 August 2020;
Published online: 9 November 2020

Related links

Key reference using this protocol

Jacob, F. et al. *Cell* **180**, 188–204.e122 (2020): <https://doi.org/10.1016/j.cell.2019.11.036>

Reporting Summary

Nature Research wishes to improve the reproducibility of the work that we publish. This form provides structure for consistency and transparency in reporting. For further information on Nature Research policies, see [Authors & Referees](#) and the [Editorial Policy Checklist](#).

Statistics

For all statistical analyses, confirm that the following items are present in the figure legend, table legend, main text, or Methods section.

- | n/a | Confirmed |
|-------------------------------------|------------------------------------------------------------------------------------------------------------------------------------------------------------------------------------------------------------------------------------------------------------------------------------------------|
| <input type="checkbox"/> | <input checked="" type="checkbox"/> The exact sample size (n) for each experimental group/condition, given as a discrete number and unit of measurement |
| <input type="checkbox"/> | <input checked="" type="checkbox"/> A statement on whether measurements were taken from distinct samples or whether the same sample was measured repeatedly |
| <input checked="" type="checkbox"/> | <input type="checkbox"/> The statistical test(s) used AND whether they are one- or two-sided
<i>Only common tests should be described solely by name; describe more complex techniques in the Methods section.</i> |
| <input checked="" type="checkbox"/> | <input type="checkbox"/> A description of all covariates tested |
| <input checked="" type="checkbox"/> | <input type="checkbox"/> A description of any assumptions or corrections, such as tests of normality and adjustment for multiple comparisons |
| <input type="checkbox"/> | <input checked="" type="checkbox"/> A full description of the statistical parameters including central tendency (e.g. means) or other basic estimates (e.g. regression coefficient) AND variation (e.g. standard deviation) or associated estimates of uncertainty (e.g. confidence intervals) |
| <input checked="" type="checkbox"/> | <input type="checkbox"/> For null hypothesis testing, the test statistic (e.g. F , t , r) with confidence intervals, effect sizes, degrees of freedom and P value noted
<i>Give P values as exact values whenever suitable.</i> |
| <input checked="" type="checkbox"/> | <input type="checkbox"/> For Bayesian analysis, information on the choice of priors and Markov chain Monte Carlo settings |
| <input checked="" type="checkbox"/> | <input type="checkbox"/> For hierarchical and complex designs, identification of the appropriate level for tests and full reporting of outcomes |
| <input checked="" type="checkbox"/> | <input type="checkbox"/> Estimates of effect sizes (e.g. Cohen's d , Pearson's r), indicating how they were calculated |

Our web collection on [statistics for biologists](#) contains articles on many of the points above.

Software and code

Policy information about [availability of computer code](#)

Data collection	Sample bright-field images and confocal images of fluorescent immunohistology were taken using Zen 2 Blue software (Zeiss, (https://www.zeiss.com/microscopy/us/products/microscope-software/zen.html , RRID:SCR_013672))
Data analysis	Sample bright-field images and confocal images of fluorescent immunohistology were processed using Illustrator CC (Adobe, https://www.adobe.com/products/illustrator.html , RRID:SCR_010279) software, ImageJ (NIH, https://imagej.nih.gov/ij/ , RRID:SCR_003070) software, Imaris (Bitplane, https://imaris.oxinst.com/packages , RRID:SCR_007370) software, and/or Photoshop CC (Adobe, https://www.adobe.com/products/photoshop.html , RRID:SCR_014199) software. Graphs and mean, SEM, and SD calculations were made using Prism (GraphPad, https://www.graphpad.com/scientific-software/prism/ , RRID:SCR_002798) software.

For manuscripts utilizing custom algorithms or software that are central to the research but not yet described in published literature, software must be made available to editors/reviewers. We strongly encourage code deposition in a community repository (e.g. GitHub). See the Nature Research [guidelines for submitting code & software](#) for further information.

Data

Policy information about [availability of data](#)

All manuscripts must include a [data availability statement](#). This statement should provide the following information, where applicable:

- Accession codes, unique identifiers, or web links for publicly available datasets
- A list of figures that have associated raw data
- A description of any restrictions on data availability

The data that provide examples of the results that can be generated with this protocol are available from the corresponding authors on reasonable request.

Field-specific reporting

Please select the one below that is the best fit for your research. If you are not sure, read the appropriate sections before making your selection.

☒ Life sciences ☐ Behavioural & social sciences ☐ Ecological, evolutionary & environmental sciences

For a reference copy of the document with all sections, see [nature.com/documents/nr-reporting-summary-flat.pdf](https://www.nature.com/documents/nr-reporting-summary-flat.pdf)

Life sciences study design

All studies must disclose on these points even when the disclosure is negative.

Sample size	No statistical methods were used to pre-determine sample size. Sample size was determined empirically based on prior experience with organoid quantifications (Qian et al., 2016; Qian et al., 2018; Jacob et al., 2020). In general we quantify from at least 5 organoids, with 3 independent images per organoid.
Data exclusions	No data were excluded from analysis.
Replication	Generation of GBOs has been replicated for over 50 tumor samples. 2173-BBz CAR-T cells were efficacious in three independent experiments and multiple different GBO samples.
Randomization	GBOs were randomly assigned treatment groups.
Blinding	Quantifications were performed blinded to the treatment group when possible.

Reporting for specific materials, systems and methods

We require information from authors about some types of materials, experimental systems and methods used in many studies. Here, indicate whether each material, system or method listed is relevant to your study. If you are not sure if a list item applies to your research, read the appropriate section before selecting a response.

Materials & experimental systems

n/a	Involved in the study
<input type="checkbox"/>	<input checked="" type="checkbox"/> Antibodies
<input type="checkbox"/>	<input checked="" type="checkbox"/> Eukaryotic cell lines
<input checked="" type="checkbox"/>	<input type="checkbox"/> Palaeontology
<input checked="" type="checkbox"/>	<input type="checkbox"/> Animals and other organisms
<input type="checkbox"/>	<input checked="" type="checkbox"/> Human research participants
<input checked="" type="checkbox"/>	<input type="checkbox"/> Clinical data

Methods

n/a	Involved in the study
<input checked="" type="checkbox"/>	<input type="checkbox"/> ChIP-seq
<input checked="" type="checkbox"/>	<input type="checkbox"/> Flow cytometry
<input checked="" type="checkbox"/>	<input type="checkbox"/> MRI-based neuroimaging

Antibodies

Antibodies used

- Donkey anti-Goat IgG polyclonal secondary antibody (Alexa Fluor 488, Alexa Fluor 555, and Alexa Fluor 647; Thermo Fisher Scientific, cat. nos. A-11055, A-21432, and A-21447, RRIDs: AB_2534102, AB_2535853, and AB_2535864)
- Donkey anti-Mouse IgG polyclonal secondary antibody (Alexa Fluor 488, Alexa Fluor 555, and Alexa Fluor 647; Thermo Fisher Scientific, cat. nos. A-21202, A-31570, and A-31571, RRIDs: AB_141607, AB_2536180, and AB_162542)
- Donkey anti-Rabbit IgG polyclonal secondary antibody (Alexa Fluor 488, Alexa Fluor 555, and Alexa Fluor 647; Thermo Fisher Scientific cat. nos. A-21206, A-31572, and A-31573, RRIDs: AB_2535792, AB_162543, and AB_2536183)
- Goat anti-Nestin polyclonal antibody (Santa Cruz Biotechnology, cat. no. sc-21247, RRID: AB_650014)
- Goat anti-Sox2 polyclonal antibody (Santa Cruz Biotechnology, cat. no. sc-17320, RRID: AB_2286684)
- Mouse anti-BLBP monoclonal antibody (Abcam, cat. no. ab131137, RRID: AB_11157091)
- Mouse anti-CD3 monoclonal antibody (BioLegend, cat. no. 344802, RRID: AB_2043995)
- Mouse anti-EGFR monoclonal antibody (Thermo Fisher Scientific, cat. no. MA1-12693, RRID: AB_1074165)
- Mouse anti-GFAP monoclonal antibody (Millipore, cat. no. MAB360, RRID: AB_11212597)
- Mouse anti-Granzyme B monoclonal antibody (R&D Systems, cat. no. MAB2906, RRID: AB_2263752)
- Mouse anti-Ki67 monoclonal antibody (BD Biosciences, cat. no. 550609, RRID: AB_39377)
- Mouse anti-VWF monoclonal antibody (Santa Cruz Biotechnology, cat. no. sc-365712, RRID: AB_10842026)
- Mouse anti-FABP7 monoclonal antibody (Abcam, cat. no. ab131137, RRID: AB_111570)
- Mouse anti-pVIM monoclonal antibody (Cell Signaling Technology, cat. no. 3877, RRID: AB_221626)
- Rabbit anti-CD31 polyclonal antibody (Abcam cat. no. ab28364, RRID: AB_726362)
- Rabbit anti-Cleaved Caspase-3 polyclonal antibody (Cell Signaling Technology, cat. no. 9661 RRID: AB_2341188)
- Rabbit anti-EGF Receptor vIII monoclonal antibody (Cell Signaling Technology, cat. no. 64952, RRID: AB_2773018)
- Rabbit anti-Hopx polyclonal antibody (Santa Cruz Biotechnology, cat. no. sc-30216, RRID: AB_2120833)
- Rabbit anti-Iba1 polyclonal antibody (Wako, cat. no. 019-19741, RRID: AB_839504)
- Rabbit anti-Ki67 polyclonal antibody (Abcam cat. no. ab15580, RRID: AB_443209)

- Rabbit anti-Olig2 monoclonal antibody (Abcam, cat. no. ab109186, RRID: AB_10861310)
- Rabbit anti-S100B polyclonal antibody (Sigma-Aldrich, cat. no. S2644, RRID: AB_477501)
- Rat anti-CD3 monoclonal antibody (GeneTex, cat. no. GTX11089, RRID: AB_369097)

Validation

Most antibodies have validation results on the manufacturer's webpage. Secondary antibody-only controls were used to verify that the signal from each antibody was specific. Positive controls were used when available. The literature was consulted for expected protein expression patterns.

Eukaryotic cell lines

Policy information about [cell lines](#)

Cell line source(s)

Glioblastoma organoids were generated from resected tumor tissue provided by the Hospital of the University of Pennsylvania

Authentication

Where possible, GBO sample identity was verified by short-tandem repeat profiling.

Mycoplasma contamination

All GBO samples described in this manuscript tested negative for mycoplasma by targeted PCR.

Commonly misidentified lines
(See [ICLAC](#) register)

Name any commonly misidentified cell lines used in the study and provide a rationale for their use.

Human research participants

Policy information about [studies involving human research participants](#)

Population characteristics

A total of 58 patient cases (including recurrent cases) from both male and female subjects between the ages of 21-90 years old were included in the present study. Research participants were chosen based on diagnosis of glioblastoma, with no special attention to sex or age. Informed patient consent was obtained prior to surgery.

Recruitment

Patients undergoing surgical removal of glioblastoma tissue were recruited.

Ethics oversight

The use of human brain tissue and peripheral blood samples was coordinated by the University of Pennsylvania Tumor Tissue/Biospecimen Bank following ethical and technical guidelines on the use of human samples for biomedical research purposes. Patient glioblastoma tissue and peripheral blood samples were collected at the Hospital of the University of Pennsylvania after informed patient consent under a protocol approved by the University of Pennsylvania's Institutional Review Board. All patient samples were de-identified before processing.

Note that full information on the approval of the study protocol must also be provided in the manuscript.