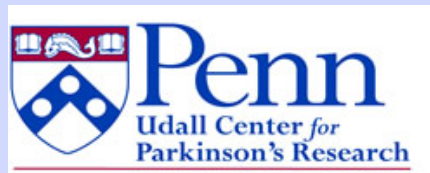


THE UDALL RESEARCH
PROGRAM AT THE
PARKINSON'S DISEASE
AND MOVEMENT
DISORDERS CENTER

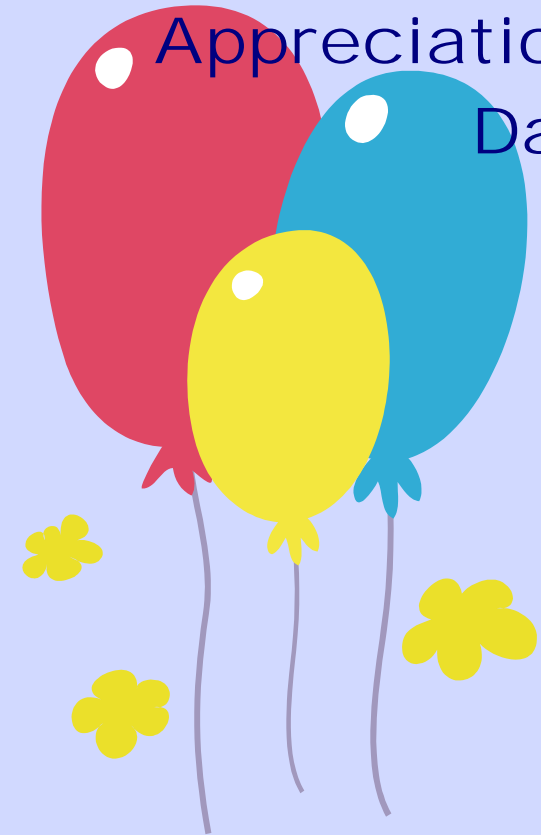
The Penn Udall Research Program is in its fourth year of patient participation. We would like to invite all of our research participants to a morning program to thank you for your invaluable contributions and to update everyone on the progress of the Parkinson research going on at Penn.

This research could not happen without your help!



Parkinson's Disease and
Movement Disorders Center
330 South 9th Street
Philadelphia, PA 19107
<http://www.med.upenn.edu/udall/>

Patient
Appreciation
Day



Saturday, October 16, 2010
9:45 a.m. to 12 p.m.
Zubrow Auditorium,
Pennsylvania Hospital



A HEARTFELT THANK YOU

We want to express our sincerest gratitude to our research participants for their time, effort, and desire to make a difference in the lives of future patients with Parkinson's disease.

We invite you and one guest to join us for a light breakfast and some presentations from the physicians and staff at the University of Pennsylvania Parkinson's Disease and Movement Disorders Center.

Space is limited. Please review the attached information and agenda and RSVP (with number attending) to one of our coordinators by October 8th:

Jacqui Rick, 215-829-7778

Abigail Darin, 215-829-7374

Baochan Tran, 215-829-7104

Jane Sachs, 215-829-7128

AGENDA

- 9:45 Registration and Light Buffet
- 10:00 Howard Hurtig, MD: History of the Penn Neurological Disorders Brain Bank
- 10:30 Nabila Dahodwala, MD: Access to Care for Parkinson's Disease
- 11:00 Andrew Siderowf, MD: Results from Udall Center biomarker studies
- 11:30 Thank you from the Udall Center Staff

PARKING AT PENNSYLVANIA HOSPITAL

The Zubrow Auditorium is located on the 1st floor of the main hospital at 8th and Spruce. There is a hospital lot at 8th and Delancey Streets (8th between Spruce and Pine).

Parking tickets will be validated.

DIRECTIONS TO PENNSYLVANIA HOSPITAL

Pennsylvania Hospital is located at 800 Spruce Street, Downtown Philadelphia

From I-76: Exit 344 Vine St Expressway/I-676 E toward Central Philadelphia. Take the exit toward I-676E/Ben Franklin Br. Take a slight Right onto 6th St. and a Right onto Spruce St. Take a left onto 8th St. (and then a quick Left onto Delancey for the parking garage).

From I-95: Exit 20 Columbus Blvd (toward Washington Ave). Take the ramp toward Washington Ave/Penns Landing. Turn Left onto S Columbus Blvd, and then Left onto Washington Ave. Turn Right onto S. 5th St. and then Left onto Spruce St. Turn left onto 8th St. (and then a quick left onto Delancey for the parking garage).

