



**Penn Medicine**  
Abramson Cancer Center

**FRIDAY, JANUARY 31, 2020**

**7:30 AM - 4:30 PM**

The Rittenhouse Hotel | 210 W Rittenhouse Square | Philadelphia, PA 19103

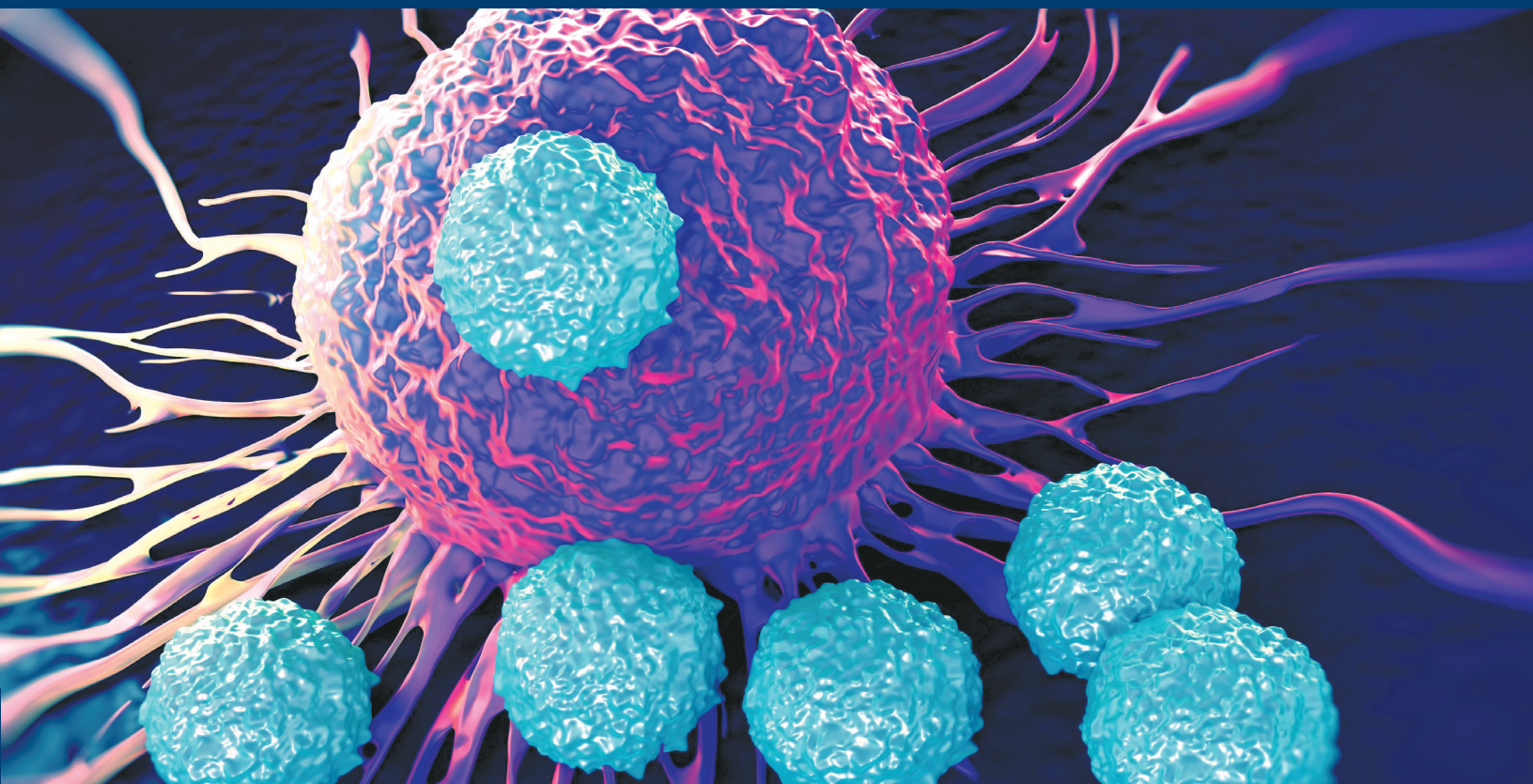
Penn Medicine's Abramson Cancer Center and  
the Leukemia & Lymphoma Society **PRESENT**

# **2020 UPDATES IN CARE OF THE HEMATOLOGIC MALIGNANCIES PATIENT:**

with Proceedings from International Medical Meetings

*A CME/CNE-accredited Conference*

**REGISTER AT [PennMedicine.org/Abramson/BloodCME20](https://PennMedicine.org/Abramson/BloodCME20)**



# 2020 UPDATES IN CARE OF THE HEMATOLOGIC MALIGNANCIES PATIENT:

with Proceedings from International Medical Meetings  
*A CME/CNE-accredited Conference*

**FRIDAY, JANUARY 31**

**2020**

**7:30 AM – 4:30 PM**

## **THE RITTENHOUSE HOTEL**

210 W Rittenhouse Square  
Philadelphia, PA 19103

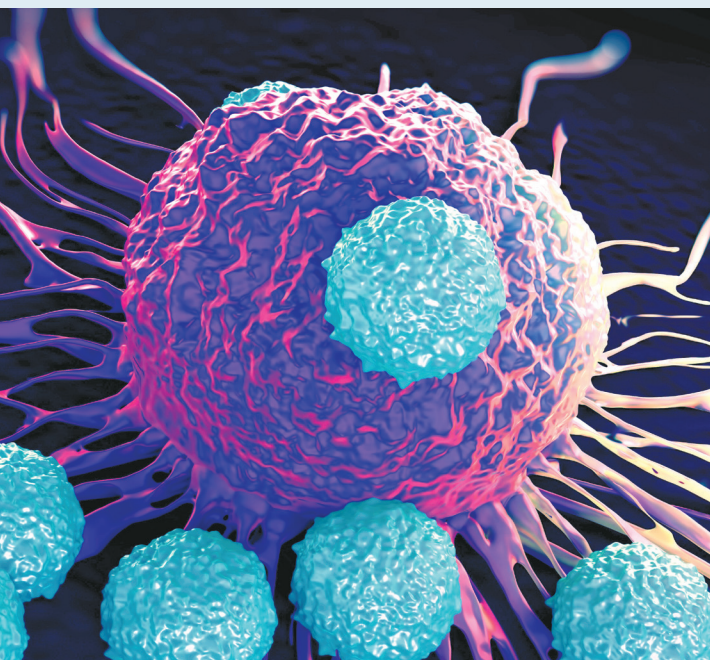
## **DIRECTIONS AND PARKING**

Visit [rittenhousehotel.com](http://rittenhousehotel.com)

Valet parking available.

Parking fees are not covered by conference.

*Please note that conference materials will be available online. Please bring your electronic device to view presentations in real time.*



## **OVERVIEW**

This course is a comprehensive review of hematologic malignancies focusing on research developments over the preceding year and their application to the patient care journey. Didactic presentations will include case discussion with Penn faculty and community experts. Activity format will provide significant opportunity for interaction with expert faculty and other attendees with the aim of implementing new standards of patient care. Participants will leave with up-to-date, practical information which will have immediate clinical application.

## **LEARNING OBJECTIVES**

Upon completion of this course, participants should be able to:

- Identify clinical features, including differential diagnoses for the various hematologic malignancies
- Implement strategies that incorporate state-of-the-art genomic analyses for hematologic malignancies
- Select patients with potential eligibility for immunotherapy
- List appropriate clinical trials for hematologic malignancies
- Identify the major patient management issues experienced by the interprofessional care team associated with hematologic malignancies
- Apply new strategies for incorporating therapies that target metabolism in blood cancers

## **WHO SHOULD ATTEND**

This activity has been designed for hematologists, medical and radiation oncologists, primary care physicians, pathologists, hematology/oncology fellows, oncology nurses, oncology social workers, and other healthcare professionals involved in the treatment of patients with blood cancers.

## **REGISTER AT**

**[PennMedicine.org/Abramson/BloodCME20](http://PennMedicine.org/Abramson/BloodCME20)**

# AGENDA

**7:30 am**

Registration and Continental Breakfast

**8:00 am**

Welcome and Introduction

Edward A. Stadtmauer, MD, Activity Director

Ellen Rubesin, Executive Director, Leukemia and Lymphoma Society

## KEYNOTE PRESENTATION

**8:10 am**

Beyond CD19 Directed CAR T:  
including CRISPR Editing for Blood Cancer

Edward A. Stadtmauer, MD

## NEW THERAPIES AND CURRENT PATIENT MANAGEMENT OF LYMPHOMAS

**MODERATOR:** Stephen J. Schuster, MD

**9:00 am**

New Therapies and Current Management of  
CLL and Mantle Cell Lymphoma

James M. Gerson, MD

**9:30 am**

Therapeutic Advances in Hodgkin and  
T-cell NHL

Jakub Svoboda, MD

**10:00 am**

Large Cell Lymphoma and Aggressive  
Lymphomas

Sunita D. Nasta, MD, FACP

**10:30 am**

Case Presentation with Panel Discussion

**MODERATOR:** Stephen J. Schuster, MD

### PANEL:

Douglas F. Beach, MD

James M. Gerson, MD

Gamil S. Hanna, MD

Danielle Land, MSN, CRNP

Sunita D. Nasta, MD, FACP

Jakub Svoboda, MD

**11:00 am**

BREAK

## UPDATE ON PATIENT CARE TREATMENT STRATEGIES IN LEUKEMIA

**MODERATOR:** Keith W. Pratz, MD

**11:15 am**

Update in Treatment Strategies for MDS

Shannon R. McCurdy, MD

**11:45 am**

Update in CML and Myeloproliferative Disease

Daria V. Babushok, MD, PhD

**12:15 pm**

Emerging Treatment Options for AML and ALL

Alexander E. Perl, MD

**12:45 pm**

Panel Discussion with Question and  
Answer Session

**MODERATOR:** Keith W. Pratz, MD

### PANEL:

Daria V. Babushok, MD, PhD

Joanna Ferreri, CRNP

Shannon R. McCurdy, MD

Alexander E. Perl, MD

Sunil Saroha, MD

**1:15 pm**

LUNCH

## UPDATE IN BLOOD AND MARROW TRANSPLANTATION AND CELLULAR THERAPY

**2:00 pm**

David L. Porter, MD

Patricia A. Ford, MD

**REGISTER AT**

**[PennMedicine.org/Abramson/BloodCME20](https://PennMedicine.org/Abramson/BloodCME20)**



## CONTROVERSIES AND UPDATE FOR PATIENT CARE IN MULTIPLE MYELOMA

**MODERATOR:** Edward A. Stadtmauer, MD

**2:30 pm**

Initial Therapy for Multiple Myeloma Including Transplant

Alfred L. Garfall, MD, MTR

**3:00 pm**

Experimental Therapies for Relapsed Myeloma

Dan T. Vogl, MD, MSCE

**3:30 pm**

Role of Immunotherapy for Myeloma

Adam D. Cohen, MD

**4:00 pm**

Case Presentation with Panel Discussion

**MODERATOR:** Edward A. Stadtmauer, MD

**PANEL:**

Adam D. Cohen, MD

Alfred L. Garfall, MD

Patricia Mangan, MSN, CRNP

Dan T. Vogl, MD, MSCE

Stephen G. Wallace, MD

**4:30 pm**

ADJOURN

## ACCREDITATION AND DESIGNATION OF CREDIT

### ACCREDITATION

In support of improving patient care, Penn Medicine is jointly accredited by the Accreditation Council for Continuing Medical Education (ACCME), the Accreditation Council for Pharmacy Education (ACPE), and the American Nurses Credentialing Center (ANCC), to provide continuing education for the healthcare team.

### DESIGNATION OF CREDIT

**PHYSICIANS:** Penn Medicine designates this live activity for a maximum of *7.5 AMA PRA Category 1 Credits™*. Physicians should claim only the credit commensurate with the extent of their participation in the activity.

**NURSES:** The program will award 7.5 contact hours

**PHYSICIAN ASSISTANTS:** AAPA accepts certificates of participation for educational activities accredited for *AMA PRA Category 1 Credits™* from organizations accredited by ACCME or a recognized state medical society. PAs may receive a maximum of 7.5 Category 1 credits for completing this activity.

### DISCLOSURES

Penn Medicine, Office of Continuing Medical and Interprofessional Education, adheres to the ACCME Standards for Commercial Support. Faculty and planner's disclosure information will be made available in the conference materials and syllabus. Faculty members are also expected to disclose to participants any discussion of off-label and/or investigational use of pharmaceutical products or devices within their presentations.

### CANCELLATION POLICY

The University reserves the right to cancel or postpone any course due to unforeseen circumstances. In the event of cancellation or postponement, the University will refund registration fees but is not responsible for any related costs or expenses to participants, including cancellation fees assessed by hotels, airlines and travel agencies.

In order to process refunds for conference withdrawals, we must receive cancellation in writing by January 3, 2020.

## REGISTRATION

Industry ..... \$500

Non-Penn Physicians..... \$50

Non-Penn residents, fellows nurses and other healthcare professionals ..... \$25

Penn faculty, staff, residents, and fellows..... \$25

Students and advocates.....no fee

Registration fee includes course materials, continental breakfast, and lunch.

For additional information please contact [lopezb@pennmedicine.upenn.edu](mailto:lopezb@pennmedicine.upenn.edu).

REGISTER AT [PennMedicine.org/Abramson/BloodCME20](https://PennMedicine.org/Abramson/BloodCME20)

# SPEAKERS

## ACTIVITY DIRECTOR



### **Edward A. Stadtmauer, MD**

Roseman, Tarte, Harrow, and Shaffer Families' President's Distinguished Professor

Chief, Hematologic Malignancies Section in the Division of Hematology Oncology

Co-Leader, Hematologic Malignancies Research Program

## ACTIVITY CO-DIRECTORS



### **Selina M. Luger, MD**

Professor, Medicine  
Division of Hematology Oncology

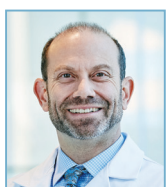


### **David L. Porter, MD**

Jodi Fisher Horowitz Professor of Leukemia Care Excellence

Division of Hematology Oncology

Director, Cell Therapy and Transplantation



### **Keith W. Pratz, MD**

Associate Professor of Medicine  
Division of Hematology Oncology

Director, Leukemia Program



### **Stephen J. Schuster, MD**

Robert and Margarita Louis-Dreyfus Professor of Chronic Lymphocytic Leukemia and Lymphoma

Division of Hematology Oncology

Director, Lymphoma Program and Lymphoma Translational Research

## PENN MEDICINE FACULTY

### **Daria V. Babushok, MD, PhD**

Assistant Professor, Medicine (Hematology/Oncology)

### **Douglas F. Beach, MD**

Assistant Professor, Medicine (Hematology/Oncology)

### **Adam D. Cohen, MD**

Assistant Professor, Medicine (Hematology/Oncology)

### **Joanna Ferreri, MSN, CRNP**

Nurse Practitioner, Medicine (Hematology/Oncology)

### **Patricia A. Ford, MD**

Clinical Professor, Medicine (Hematology Oncology)

### **Alfred L. Garfall, MD, MTR**

Assistant Professor, Medicine (Hematology/Oncology)

### **James M. Gerson, MD**

Assistant Professor, Clinical Medicine (Hematology/Oncology)

### **Gamil S. Hanna, MD**

Clinical Assistant Professor, Medicine (Hematology Oncology)

### **Danielle Land, MSN, CRNP**

Nurse Practitioner, Medicine (Hematology/Oncology)

### **Patricia Mangan, MSN, CRNP**

Nurse Practitioner, Medicine (Hematology/Oncology)

### **Shannon R. McCurdy, MD**

Assistant Professor, Medicine (Hematology /Oncology)

### **Sunita D. Nasta, MD, FACP**

Associate Professor, Medicine (Hematology/Oncology)

### **Alexander E. Perl, MD**

Associate Professor, Medicine (Hematology/Oncology)

### **Sunil Saroha, MD**

Clinical Associate Professor, Medicine (Hematology/Oncology)

### **Jakub Svoda, MD**

Assistant Professor, Medicine (Hematology/Oncology)

### **Dan T. Vogl, MD, MSCE**

Associate Professor, Medicine (Hematology/Oncology)

### **Stephen G. Wallace, MD**

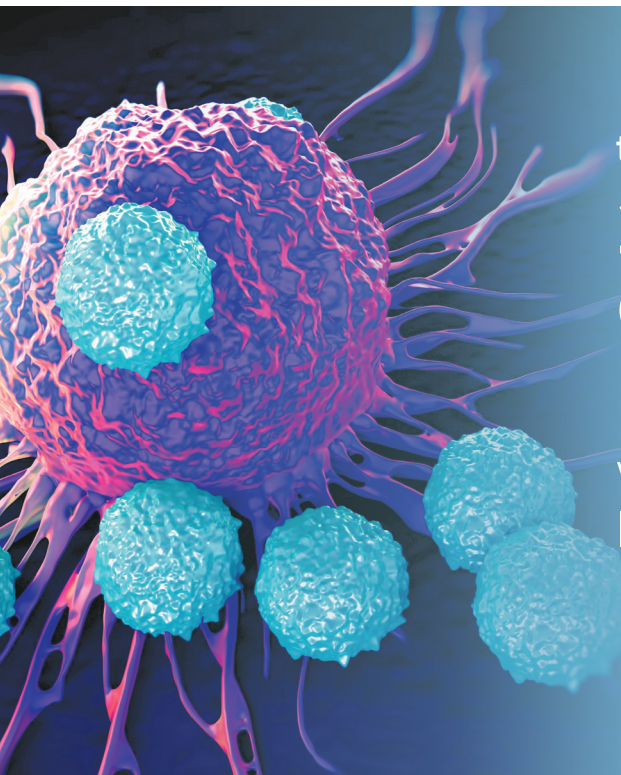
Clinician, Hematology Oncology | Penn Medicine at Virtua



**Penn Medicine**  
**Abramson Cancer Center**

3600 Civic Center Boulevard  
5th Floor- Suite 500  
Philadelphia, PA 19104

Non-Profit Org.  
U.S. Postage  
**PAID**  
Permit No. 2563  
Phila, PA 19176



Penn Medicine's Abramson Cancer Center and  
the Leukemia & Lymphoma Society **PRESENT**

# **2020 UPDATES IN CARE OF THE HEMATOLOGIC MALIGNANCIES PATIENT:**

with Proceedings from  
International Medical Meetings

**FRIDAY, JANUARY 31, 2020**  
**7:30 AM - 4:30 PM**

*A CME/CNE-accredited Conference*

**REGISTER AT [PennMedicine.org/Abramson/BloodCME20](https://PennMedicine.org/Abramson/BloodCME20)**

**NCI**

**Comprehensive  
Cancer Center**

A Cancer Center Designated by the  
National Cancer Institute