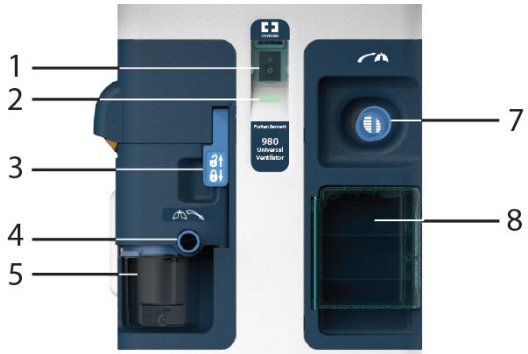
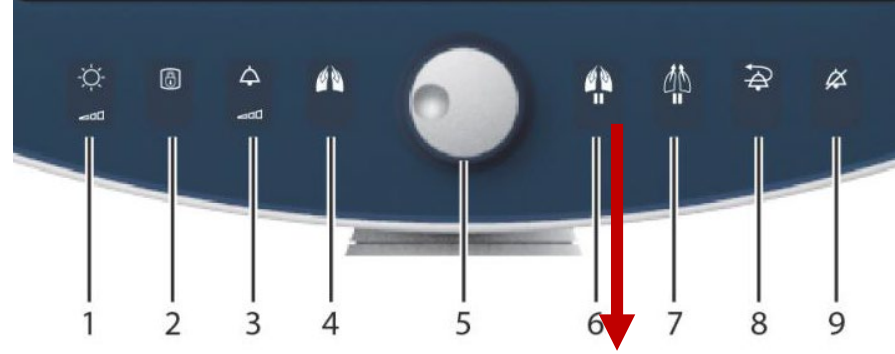


Puritan Bennett 980 Ventilator



1. Power switch
2. AC power indicator
3. Expiratory filter latch
4. Expiratory filter
5. Condensate vial
6. Status display
7. Internal inspiratory filter
8. Option connector panel door

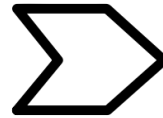


Hold to measure compliance (C_{STAT}), static resistance (RS_{TAT}), plateau pressure (P_{PL})

1. Display Brightness
2. Display Lock
3. Alarm Volume
4. Manual Inspiration
5. Adjustment Knob
6. Inspiratory Pause
7. Expiratory Pause
8. Alarm Reset
9. Audio Paused

4.1 Ventilation Settings Adjustment

1. Touch **Vent Setup** button.
2. Touch, then turn the knob to adjust each parameter needing adjustment.
3. Touch **Accept** or **Accept ALL**.

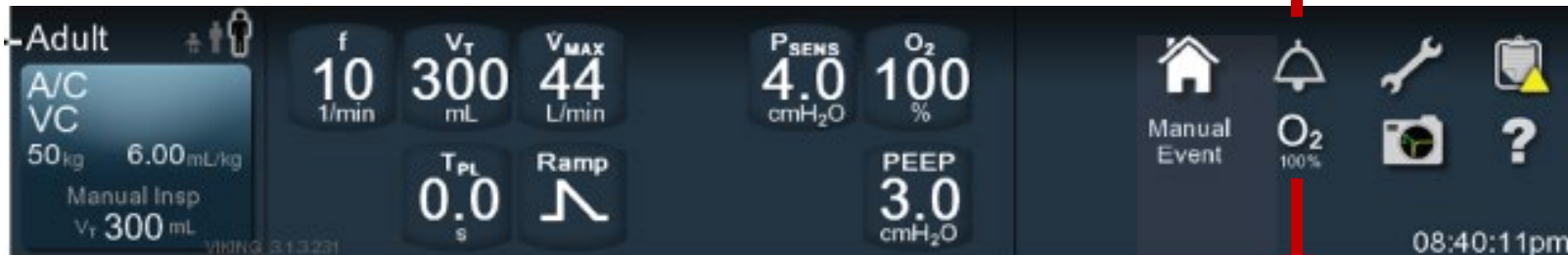


Press MENU tab (screen left) to find Stand-by Mode

Upper Right of Screen Displays Alarm Banner

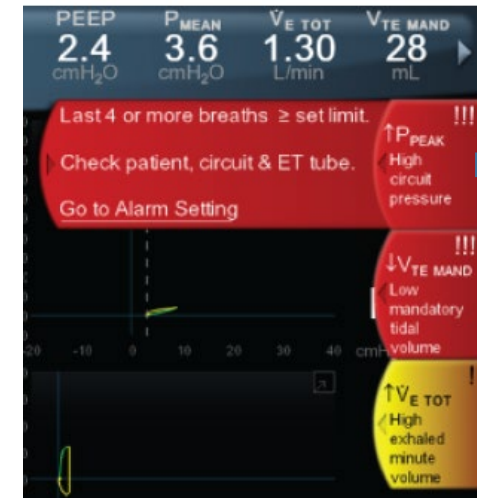
Alarms icon — Touch to display alarm settings

Adds 100% oxygen to the inflow circuit



Vent Setup

Current Settings



Penn Medicine

Department of Anesthesiology and Critical Care