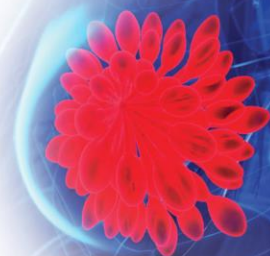


# **2022 BREAST CANCER HIGHLIGHTS**

## **from International Medical Meetings**

3rd Annual Review CME/CNE-accredited Conference



**THURSDAY, SEPTEMBER 22, 2022**

## **AGENDA**

**5:00 pm**

**Visit Exhibits / Network on the Virtual Platform via Text and/or Video Chat**

**5:55 pm**

**Join the Main Stage**

**6:00 pm**

**Welcome and Introductions**

**Rachel C. Jankowitz, MD** | Hematology Oncology

**6:10 pm**

**Updates for HER2-positive (and HER2-low) Breast Cancer**

**Saveri Bhattacharya, DO** | Hematology Oncology

**Mary B. Mahler, MD** | Hematology Oncology

**6:50 pm**

**Updates for Hormone Receptor-positive Breast Cancer**

**Amy S. Clark, MD, MSCE** | Hematology Oncology

**Igor Makhlin, MD** | Hematology Oncology

**7:20 pm**

**Updates for TNBC and Hereditary Breast Cancer**

**Tracy S. d'Entremont, MD** | Hematology Oncology

**Kara N. Maxwell, MD, PHD** | Hematology Oncology

**7:50 pm**

**Updates for Locoregional Breast Cancer Management**

**SURGICAL: Leisha C. Elmore, MD** | Surgical Oncology

**RADIATION: Gary M. Freedman, MD** | Radiation Oncology

Virtual meeting at [PennMedicine.org/Abramson/Breast2022](https://PennMedicine.org/Abramson/Breast2022)

# 2022 BREAST CANCER HIGHLIGHTS

## from International Medical Meetings

3rd Annual Review CME/CNE-accredited Conference



**8:10 pm**

**Q&A and Wrap Up**

**MODERATORS:**

**Rachel C. Jankowitz, MD** | Hematology Oncology

**Angela M. DeMichele, MD** | Hematology Oncology

**PANEL:**

**Saveri Bhattacharya, DO** | Hematology Oncology

**Amy Clark, MD, MSCE** | Hematology Oncology

**Tracy S. d'Entremont, MD** | Hematology Oncology

**Leisha C. Elmore, MD** | Surgical Oncology

**Oluwadamilola Motunrayo Fayanju MD, MA, MPHS** | Surgical Oncology

**Gary Freedman, MD** | Radiation Oncology

**Mary B. Mahler, MD** | Hematology Oncology

**Igor Makhlin, MD** | Hematology Oncology

**Kara N. Maxwell, MD, PHD** | Hematology Oncology

**8:30 pm**

**Adjourns**

**Post Conference Details**

After the conference has concluded, all attendees will receive an [email from Penn CME](#) with instructions on how to complete the post-test, evaluation, claim credit and obtain a certificate.

Look for the email early NEXT WEEK.

If you missed the Pre-Test, you will still get your certificate after you complete the Post-Test and Evaluation.

A [Certificate of Participation](#) is available to attendees who are not physicians or nurses.

**AFTER THE CONFERENCE LINKS TO MEETING VIDEOS CAN BE FOUND:**

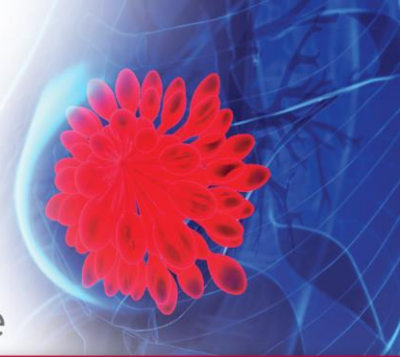
Website: [PennMedicine.org/Abramson/Breast2022](https://PennMedicine.org/Abramson/Breast2022)

***\*Recordings from the meeting will be available Thursday, Sept. 29th through Sept. 2023***

Virtual meeting at [PennMedicine.org/Abramson/Breast2022](https://PennMedicine.org/Abramson/Breast2022)

# 2022 BREAST CANCER HIGHLIGHTS from International Medical Meetings

3rd Annual Review CME/CNE-accredited Conference



## Overview

This activity is designed to efficiently discuss recent clinical advances in breast cancer oncology that have emerged from presentations at recent international meetings including ASCO and SABCS. The activity format will provide opportunity for interaction between Penn Medicine faculty and meeting attendees with the aim of implementing new standards of patient care. Participants will gain up-to-date, practical information with immediate clinical application.

## Learning Objectives

At the completion of this course, participants should be able to:

- Identify clinical trial evidence that allows for the personalization of care in the management of early and advanced forms of breast cancer according to breast cancer phenotype
- Implement current and evolving roles for prognostic and predictive biomarkers to stratify risk and inform clinical decision making in the management of breast cancer
- List recent clinical trial results concerning the use of novel breast cancer treatment strategies

## Who Should Attend

The program is directed toward medical, surgical and radiation oncologists, gynecologists, radiologists, primary care physicians, advanced practice clinicians, and other health care professionals involved in the treatment of patients with breast cancer.

## Accreditation

In support of improving patient care, Penn Medicine is jointly accredited by the Accreditation Council for Continuing Medical Education (ACCME), the Accreditation Council for Pharmacy Education (ACPE), and the American Nurses Credentialing Center (ANCC), to provide continuing education for the healthcare team.

## Designation of Credit

**PHYSICIANS:** Penn Medicine designates this live activity for a maximum of **2 AMA PRA Category 1 Credits™**. Physicians should claim only the credit commensurate with the extent of their participation in the activity.

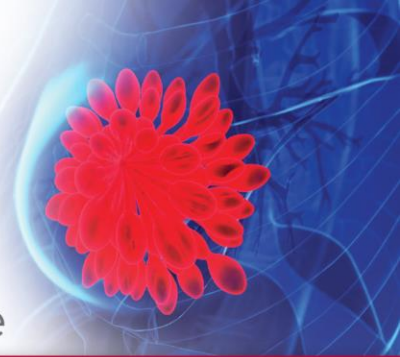
**NURSES:** This program provides **2 NCPD Hours**.

**PHYSICIAN ASSISTANTS:** AAPA accepts certificates of participation for educational activities accredited for *AMA PRA Category 1 Credits™* from organizations accredited by ACCME or a recognized state medical society. PAs may receive a maximum of **2 Category 1 credits** for completing this activity.

# **2022 BREAST CANCER HIGHLIGHTS**

## **from International Medical Meetings**

3rd Annual Review CME/CNE-accredited Conference



### **PENN MEDICINE SPEAKERS**

#### **Activity Co-Directors**

##### **Rachel C. Jankowitz, MD**

Associate Professor, Medicine (Hematology Oncology)

Director, Rena Rowan Breast Center

Rena Rowan Breast Center, Perelman Center

Perelman School of Medicine at the University of Pennsylvania / Penn Medicine

Philadelphia, PA, USA

##### **Angela M. DeMichele, MD, MSCE**

Alan and Jill Miller Professor in Breast Cancer Excellence

Co-Leader, Breast Cancer Research Program

Co-Director, 2-PREVENT Breast Cancer Translational Center of Excellence

Director, Breast Cancer Clinical Trials Unit

Rena Rowan Breast Center, Perelman Center

Perelman School of Medicine at the University of Pennsylvania / Penn Medicine

Philadelphia, PA, USA

#### **Penn Medicine Faculty**

##### **Saveri Bhattacharya, DO**

Assistant Professor of Clinical Medicine (Hematology Oncology)

Perelman School of Medicine at The University of Pennsylvania / Penn Medicine

Philadelphia, PA

##### **Amy S. Clark, MD, MSCE**

Assistant Professor of Medicine (Hematology Oncology)

Deputy Director, Breast Cancer Clinical Trials

Perelman School of Medicine at the University of Pennsylvania / Penn Medicine

Philadelphia, PA, USA

##### **Tracy S d'Entremont, MD**

Clinical Assistant Professor of Medicine (Hematology Oncology)

Director of Oncology Services, Abramson Cancer Center at Valley Forge

Perelman School of Medicine at the University of Pennsylvania / Penn Medicine

Philadelphia, PA, USA

Virtual meeting at [PennMedicine.org/Abramson/Breast2022](https://PennMedicine.org/Abramson/Breast2022)

# **2022 BREAST CANCER HIGHLIGHTS**

## **from International Medical Meetings**

3rd Annual Review CME/CNE-accredited Conference



**Leisha C. Elmore, MD**

Assistant Professor of Surgery

Perelman School of Medicine at the University of Pennsylvania / Penn Medicine

Philadelphia, PA, USA

**Oluwadamilola “Lola” Fayanju, MD, MA, MPHS, FACS (she/her)**

The Helen O. Dickens Presidential Associate Professor

Chief of Breast Surgery

Surgical Director, Rena Rowan Breast Center, Abramson Cancer Center

Perelman School of Medicine at the University of Pennsylvania / Penn Medicine

Philadelphia, PA, USA

**Gary M. Freedman MD**

Professor of Radiation Oncology

Chief, Women's Health Service, Radiation Oncology

Perelman School of Medicine at the University of Pennsylvania / Penn Medicine

Philadelphia, PA, USA

**Mary B. Mahler, MD**

Clinician, Medical Oncology

Penn Medicine

Philadelphia, PA, USA

**Igor Makhlin, MD**

Assistant Professor of Medicine (Hematology Oncology)

Perelman School of Medicine at the University of Pennsylvania / Penn Medicine

Philadelphia, PA, USA

**Kara N. Maxwell, MD, PhD**

Assistant Professor of Medicine (Hematology Oncology)

Assistant Professor of Genetics

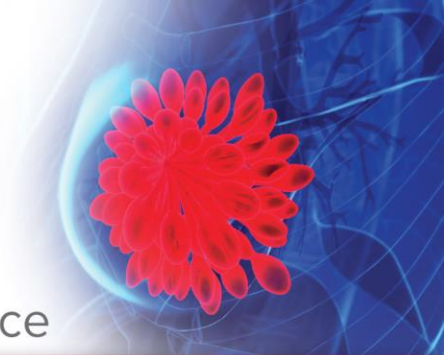
Perelman School of Medicine at the University of Pennsylvania / Penn Medicine

Philadelphia, PA, USA

# 2022 BREAST CANCER HIGHLIGHTS

## from International Medical Meetings

3rd Annual Review CME/CNE-accredited Conference



### Disclosure of Relevant Financial Relationships

Staff in the Office of Continuing Medical and Interprofessional Education (CMIE) (Bruce Brod, MD, Vaughn Wurst and Belinda Rose, CHCP), and the listed Planning Committee Members (Cynthia Griffo, MS, RN, Barbara Lopez and Lynn Schuchter, MD) have reported that they have no relevant financial relationships with any ineligible companies related to the content of this educational activity.

The following faculty members have disclosed that they have no relevant financial relationships with any ineligible companies related to the content of this educational activity:

Saveri Bhattacharya, DO  
Tracy S. d'Entremont, MD  
Leisha C. Elmore, MD  
Gary M. Freedman, MD  
Igor Makhlin MD  
Kara N. Maxwell MD, PHD  
Mary B. Mahler, MD  
Oluwadamilola "Lola" Motunrayo Fayanju, MD, MA, MPHS

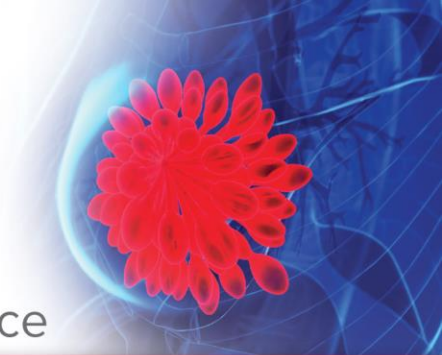
### Faculty Name

The following faculty and planning committee members have reported the relevant financial relationship with ineligible companies related to the content of their presentation. Mitigation has been done.

Faculty Name	Name of Commercial Interest	Relationship
Amy S. Clark MD, MSCE	Eli Lilly, GE Healthcare	Grants/Research Honoraria
Angela DeMichele, MD	Calithera, Genentech, Novartis AG, Pfizer	Grants/Research
Rachel C. Jankowitz MD	Biotheranostics	Membership on Advisory Committees or Review Panels, Board Membership, etc.

## **2022 BREAST CANCER HIGHLIGHTS** **from International Medical Meetings**

3rd Annual Review CME/CNE-accredited Conference



# **The Abramson Cancer Center Gratefully Acknowledges our Supporters**

### **Educational Grantor**

AstraZeneca

### **Corporate Exhibitors**

AstraZeneca

Caris Life Sciences

Exact Sciences

Gilead Sciences

Guardant Health

Lilly Oncology

Merck & Co.

Novartis

Pfizer Oncology

Puma Biotechnology