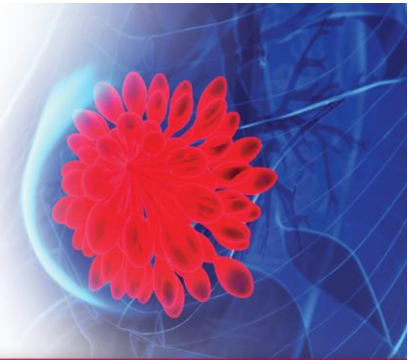


# 2025 BREAST CANCER HIGHLIGHTS from International Medical Meetings

CME/CNE-accredited Conference



**THURSDAY, MARCH 6, 2025**

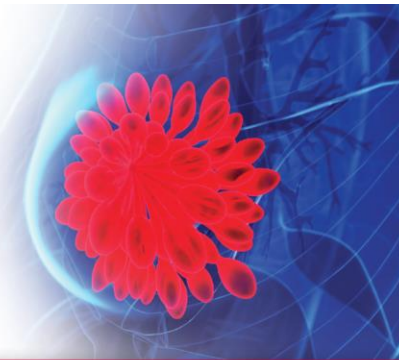
## AGENDA

- 5:45 pm**      **Login to Virtual Conference**
- 6:00 pm**      **Welcome and Introductions**  
Angela M. DeMichele, MD, MSCE | Activity Co-Director | Medical Oncology  
Oluwadamilola "Lola" Fayanju, MD, MA, MPHS, FACS | Activity Co-Director | Breast Surgery  
Rachel C. Jankowitz, MD | Activity Co-Director | Medical Oncology  
Payal D. Shah, MD | Activity Co-Director | Medical Oncology
- 6:05 pm**      **Honoring the Legacy of Cortney Beebe: Advancing TNBC research and care**  
Payal D. Shah, MD | Activity Co-Director | Medical Oncology
- 6:10 pm**      **When Less is More: A surgical oncologist's perspective on locoregional treatment**  
Oluwadamilola "Lola" Fayanju, MD, MA, MPHS, FACS | Activity Co-Director | Breast Surgery  
Jennifer Q. Zhang, MD | Breast Surgery
- 6:25 pm**      **When Less is More: Locoregional management of DCIS**  
Eva E. Berlin, MD | Radiation Oncology
- 6:40 pm**      **ER+, HER2-Negative, Early-Stage Breast Cancer: New drug approval and trial updates**  
Tracy S. d'Entremont, MD | Medical Oncology
- 6:55 pm**      **ER+ Early-Stage Breast Cancer: Tailoring risk reduction in individual patients, including addition of adjuvant CDK 4/6 Inhibitors in the context of existing adjuvant therapies**  
Rachel C. Jankowitz, MD | Activity Co-Director | Medical Oncology
- 7:10 pm**      **ER+, HER2-Negative Metastatic Breast Cancer: New drug approval and trial updates**  
Amy S. Clark, MD, MSCE | Medical Oncology
- 7:25 pm**      **ER+, HER2-Negative Metastatic Breast Cancer: Selecting the right drug at the right time, and the role of ctDNA**  
Igor Makhlin, MD | Medical Oncology

# 2025 BREAST CANCER HIGHLIGHTS

## from International Medical Meetings

CME/CNE-accredited Conference

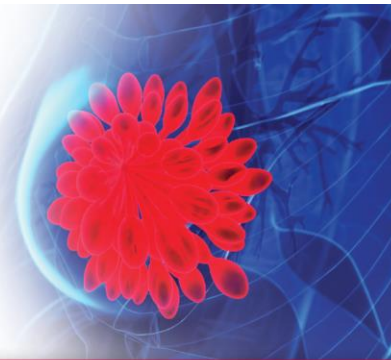


- 7:40 pm**      **Updates on HER2-Positive Metastatic Breast Cancer**  
Angela M. DeMichele, MD, MSCE | Activity Co-Director | Medical Oncology
- 7:55 pm**      **Immunotherapy in TNBC: Striking a balance between effectiveness and toxicity**  
Saya L. Jacob, MD | Medical Oncology
- 8:10 pm**      **TNBC: Current and emerging treatments**  
Payal D. Shah, MD | Activity Co-Director | Medical Oncology
- 8:25 pm**      **Germline Genetics & Therapeutics**  
Hayley M. Knollman, MD | Medical Oncology
- 8:40 pm**      **Q&A and Wrap Up**  
**MODERATOR:**  
Rachel C. Jankowitz, MD | Activity Co-Director | Medical Oncology
- PANEL:**  
Eva E. Berlin, MD | Radiation Oncology  
Amy S. Clark, MD, MSCE | Medical Oncology  
Tracy S. d'Entremont, MD | Medical Oncology  
Angela M. DeMichele, MD, MSCE | Activity Co-Director | Medical Oncology  
Oluwadamilola "Lola" Fayanju, MD, MA, MPHS, FACS | Activity Co-Director | Breast Surgery  
Saya L. Jacob, MD | Medical Oncology  
Hayley M. Knollman, MD | Medical Oncology  
Igor Makhlin, MD | Medical Oncology  
Payal D. Shah, MD | Activity Co-Director | Medical Oncology  
Jennifer Q. Zhang, MD | Breast Surgery
- 9:00 pm**      **Adjourn**

# 2025 BREAST CANCER HIGHLIGHTS

## from International Medical Meetings

CME/CNE-accredited Conference



### Post Conference Details

After the conference has concluded, all attendees will receive an [email from Penn CME](#) with instructions on how to complete the post-test, evaluation, claim credit and obtain a certificate.

Look for the email the week after the conference.

If you missed the Pre-Test, you will still be eligible to obtain your certificate after you complete the Post-Test and Evaluation. A [Certificate of Participation](#) is available to attendees who are not physicians or nurses.

### Meeting Videos

Website: [PennMedicine.org/Abramson/BreastCME2025](https://PennMedicine.org/Abramson/BreastCME2025)

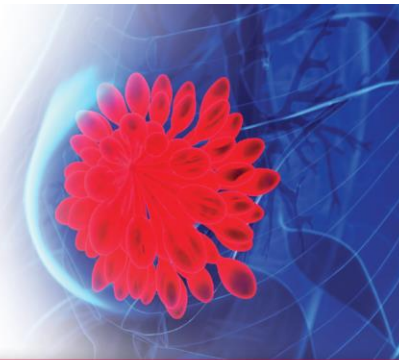
*\*Recordings from the meeting will be available Wednesday, March 12, 2025, through March 2026*

#### **Preliminary Data References**

Please note that some of the studies reported in this CE activity may have been published as abstracts only and/or presented at a conference. In these cases, the references provided in individual presentations reflect that and will be easy for you to recognize. These data and conclusions are included because expert faculty found them to be potentially important scientific contributions but should be considered preliminary until published in a peer-reviewed journal.

*We gratefully acknowledge the following company for  
providing an educational grant:*

**AstraZeneca Pharmaceuticals**



# 2025 BREAST CANCER HIGHLIGHTS

## from International Medical Meetings

CME/CNE-accredited Conference

### Overview

This activity is designed to efficiently discuss recent clinical advances in breast cancer oncology that have emerged from presentations at recent international meetings including ASCO and SABCS. The activity format will provide the opportunity for interaction between Penn Medicine faculty and meeting attendees with the aim of implementing new standards of patient care. Participants will gain up-to-date, practical information with immediate clinical application.

### Who Should Attend

The program is directed toward medical, surgical, and radiation oncologists, gynecologists, radiologists, primary care physicians, advanced practice clinicians, and other health care professionals involved in the treatment of patients with breast cancer.

### Learning Objectives

At the completion of this course, participants should be able to:

- Review the latest advancements in locoregional management of breast cancer
- Discuss new drug approvals and trial updates for ER+ breast cancer
- Describe emerging treatment approaches and biomarkers in TNBC

### Accreditation



In support of improving patient care, Penn Medicine is jointly accredited by the Accreditation Council for Continuing Medical Education (ACCME), the Accreditation Council for Pharmacy Education (ACPE), and the American Nurses Credentialing Center (ANCC), to provide continuing education for the healthcare team.

### Designation of Credit

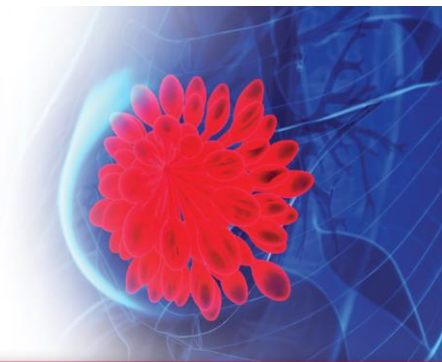
**PHYSICIANS:** Penn Medicine designates this live activity for a maximum of **3.0 AMA PRA Category 1 Credits™**. Physicians should claim only the credit commensurate with the extent of their participation in the activity.

**NURSES:** The program awards **3.0 NCPD** hours.

# 2025 BREAST CANCER HIGHLIGHTS

## from International Medical Meetings

CME/CNE-accredited Conference



### PENN MEDICINE SPEAKERS

#### Activity Co-Directors

##### Angela M. DeMichele, MD, MSCE

Mariann T. and Robert J. MacDonald Professor in Breast Cancer Care Excellence  
Professor of Medicine  
Co-Leader, Breast Cancer Research Program  
Co-Director, 2-PREVENT Breast Cancer Translational Center of Excellence  
Perelman School of Medicine at the University of Pennsylvania / Penn Medicine  
Philadelphia, PA, USA

##### Oluwadamilola “Lola” Fayanju, MD, MA, MPHS, FACS

The Helen O. Dickens Presidential Associate Professor of Surgery  
Chief of Breast Surgery  
Surgical Director, Rena Rowan Breast Center, Abramson Cancer Center  
Perelman School of Medicine at the University of Pennsylvania / Penn Medicine  
Philadelphia, PA, USA

##### Rachel C. Jankowitz, MD

Associate Professor of Medicine (Hematology Oncology)  
Director, Rena Rowan Breast Center  
Perelman School of Medicine at the University of Pennsylvania / Penn Medicine  
Philadelphia, PA, USA

##### Payal D. Shah, MD

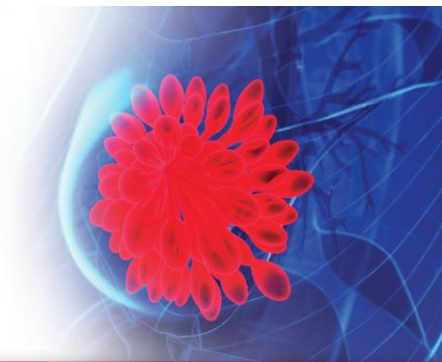
Assistant Professor of Medicine (Hematology Oncology)  
Perelman School of Medicine at the University of Pennsylvania / Penn Medicine  
Philadelphia, PA, USA



# 2025 BREAST CANCER HIGHLIGHTS

## from International Medical Meetings

CME/CNE-accredited Conference



### Faculty

#### **Eva E. Berlin, MD**

Assistant Professor of Radiation Oncology  
Perelman School of Medicine at the University of Pennsylvania / Penn Medicine  
Philadelphia, PA, USA

#### **Amy S. Clark, MD, MSCE**

Assistant Professor of Medicine (Hematology Oncology)  
Deputy Director, Breast Cancer Clinical Trials  
Perelman School of Medicine at the University of Pennsylvania / Penn Medicine  
Philadelphia, PA, USA

#### **Tracy S. d'Entremont, MD**

Clinical Assistant Professor of Medicine Hematology Oncology  
Director of Oncology Services, Abramson Cancer Center at Valley Forge  
Perelman School of Medicine at the University of Pennsylvania / Penn Medicine  
Philadelphia, PA, USA

#### **Saya L. Jacob, MD**

Assistant Professor of Medicine (Hematology-Oncology)  
Perelman School of Medicine at the University of Pennsylvania / Penn Medicine  
Philadelphia, PA, USA

#### **Hayley M. Knollman, MD**

Assistant Professor of Medicine (Medical Oncology)  
Perelman School of Medicine at the University of Pennsylvania / Penn Medicine  
Philadelphia, PA, USA

#### **Igor Makhlin, MD**

Assistant Professor of Medicine (Hematology Oncology)  
Perelman School of Medicine at the University of Pennsylvania / Penn Medicine  
Philadelphia, PA, USA

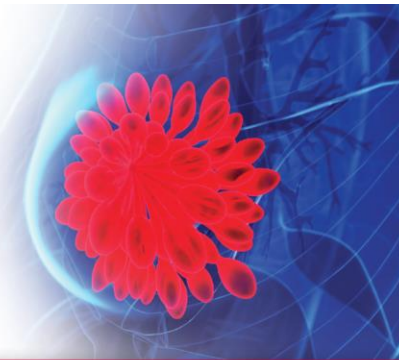
#### **Jennifer Q. Zhang, MD**

Assistant Professor of Surgery  
Perelman School of Medicine at the University of Pennsylvania / Penn Medicine  
Philadelphia, PA, USA

# 2025 BREAST CANCER HIGHLIGHTS

## from International Medical Meetings

CME/CNE-accredited Conference



### Disclosure of Financial Relationships

Staff in the Office of Continuing Medical and Interprofessional Education (CMIE) (Bruce Brod, MD, MCHI, FAAD, Vaughn Wurst, CHCP and Ansheai Spence-Jones), and the listed Planning Committee Members (Barbara Lopez, Hyacen Putmon, Jema Varnie and Gabrielle White) have reported that they have no financial relationships with any ineligible companies related to the content of this educational activity.

The following faculty and planning committee (\*) members have disclosed that they have no financial relationships with any ineligible companies related to the content of this educational activity.

Angela M. DeMichele, MD, MSCE\*  
Tracy S. d'Entremont, MD  
Eva E. Berlin, MD

Saya L. Jacob, MD  
Hayley M. Knollman, MD  
Jennifer Q. Zhang, MD

The following planning committee (\*) and faculty members have reported the listed financial relationships with ineligible companies related to the content of their presentations. All financial relationships have been mitigated.

#### FACULTY NAME

#### DISCLOSURE(S)

Amy S. Clark, MD, MD, MSCE

Grant or research support-Eli Lilly | Honoraria-Astra Zeneca Pharmaceuticals (Relationship has ended) | Grant or research support-Novartis / Amgen (Relationship has ended) | Honoraria-GE Healthcare (Relationship has ended)

Oluwadamilola "Lola" Fayanju, MD, MA, MPHS, FACS\*

Grant or research support-Gilead Sciences, Inc | Consulting Fee-Sanofi Genzyme (Relationship has ended)

Rachel C. Jankowitz, MD\*

Membership on Advisory Committees or Review Panels, Board Membership, etc.-Biotheranostics

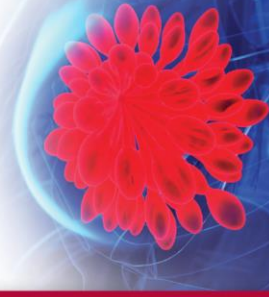
Igor Makhlin, MD

Consulting Fee-Astra Zeneca Pharmaceuticals (Relationship has ended)

Payal D. Shah, MD\*

Advisor-Astra Zeneca Pharmaceuticals | Advisor-Daiichi Sankyo (Relationship has ended) | Advisor-Gilead Sciences, Inc | Advisor-Biotheranostics (Relationship has ended)

**2025 BREAST CANCER HIGHLIGHTS**  
**from International Medical Meetings**  
CME/CNE-accredited Conference



**Thank you to Our Industry Supporters**

