

Cancer Imaging Phenomics Toolkit (CaPTk):

A Radio(geno)mics Platform for Quantitative Imaging Analytics on Computational Oncology

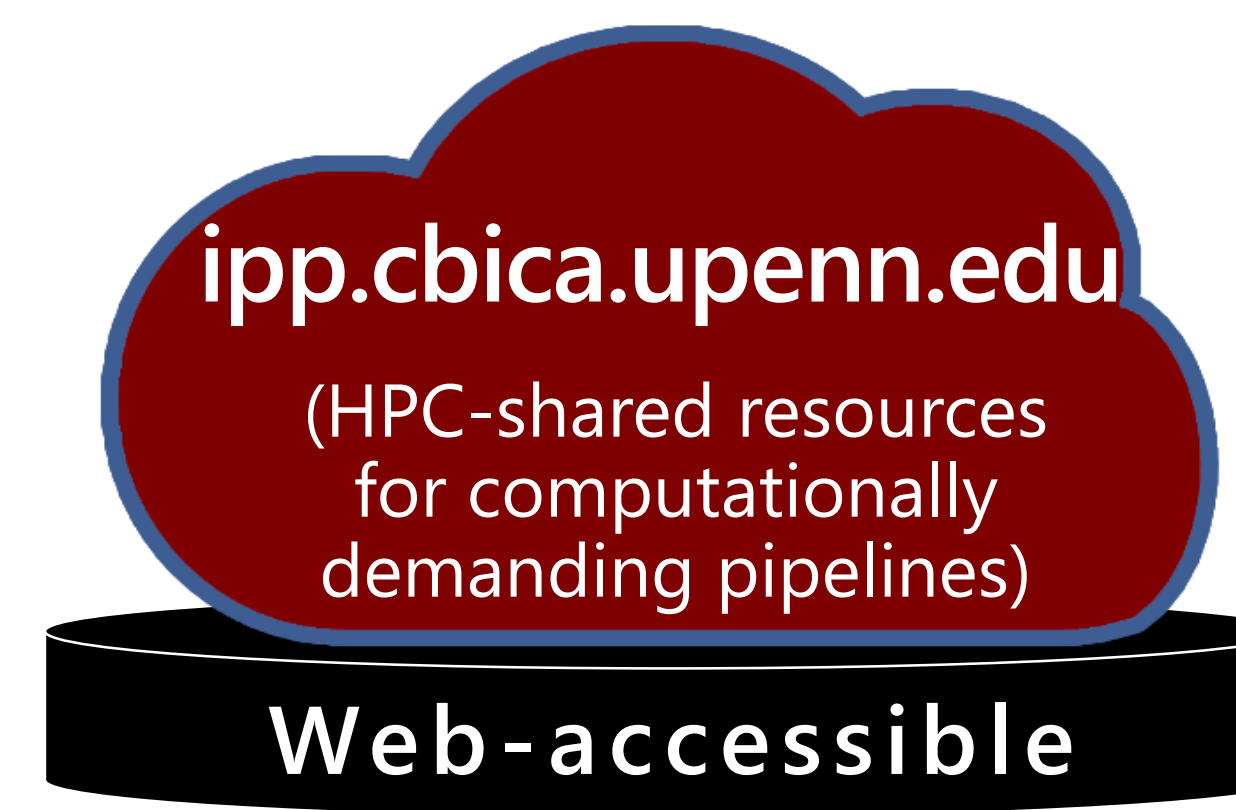
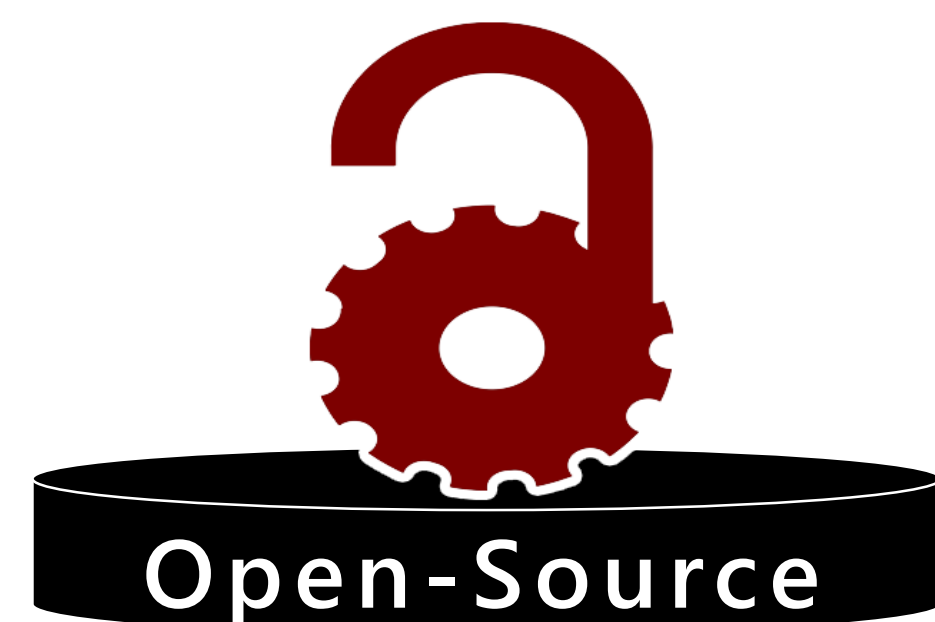
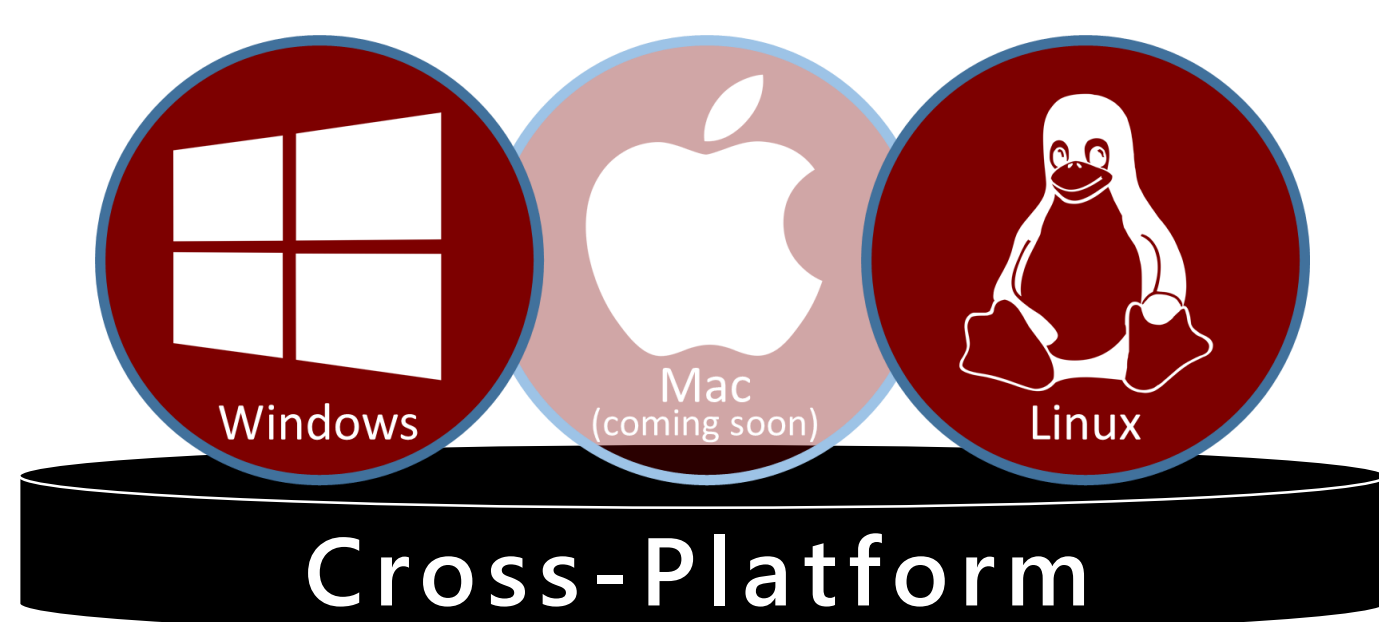


C. Davatzikos, D. Kontos, P. Yushkevich, R. Shinohara, Y. Fan, R. Verma
Center for Biomedical Image Computing and Analytics (CBICA), University of Pennsylvania

FUNDING: ITCR U24CA189523

Primary Aim: To enable swift and efficient translation of cutting-edge academic research into clinically useful tools^[1].

Target Audience: **1. Clinical experts:** facilitating use of complex algorithms for clinically relevant studies through a user-friendly interface.
2. Computational experts: allowing for batch-processing and integration of new algorithms.



www.cbica.upenn.edu/captk



captk@cbica.upenn.edu



github.com/cbica



@CBICAannounce

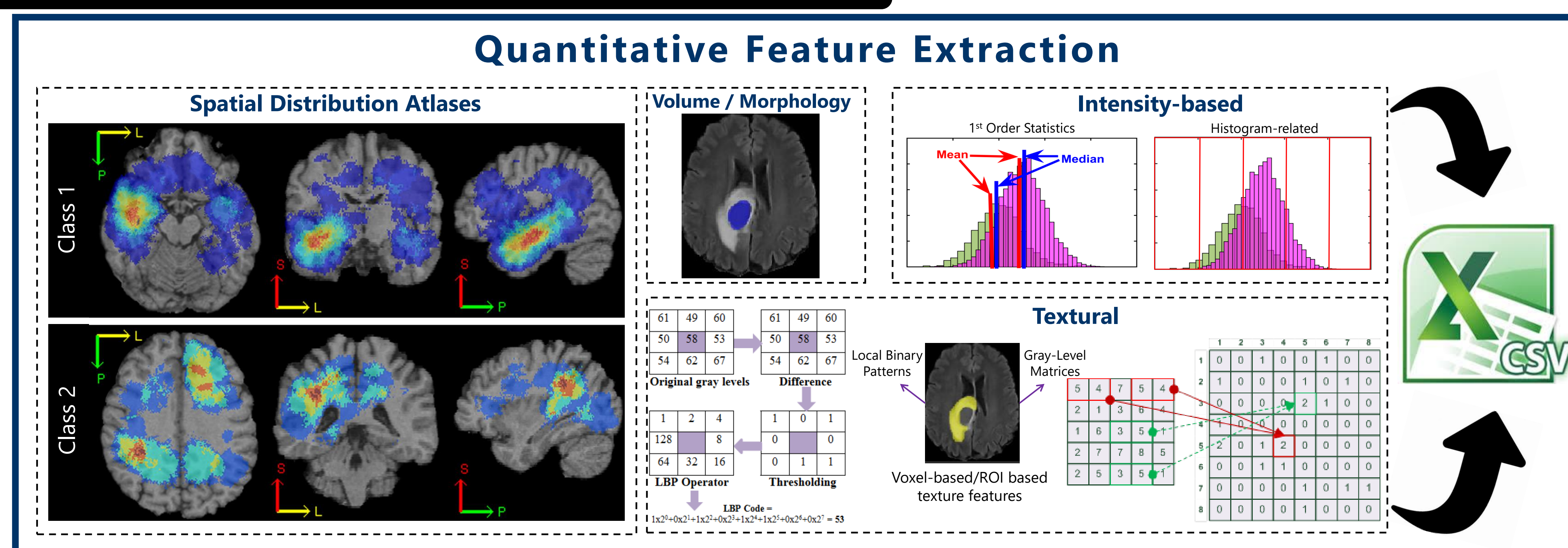
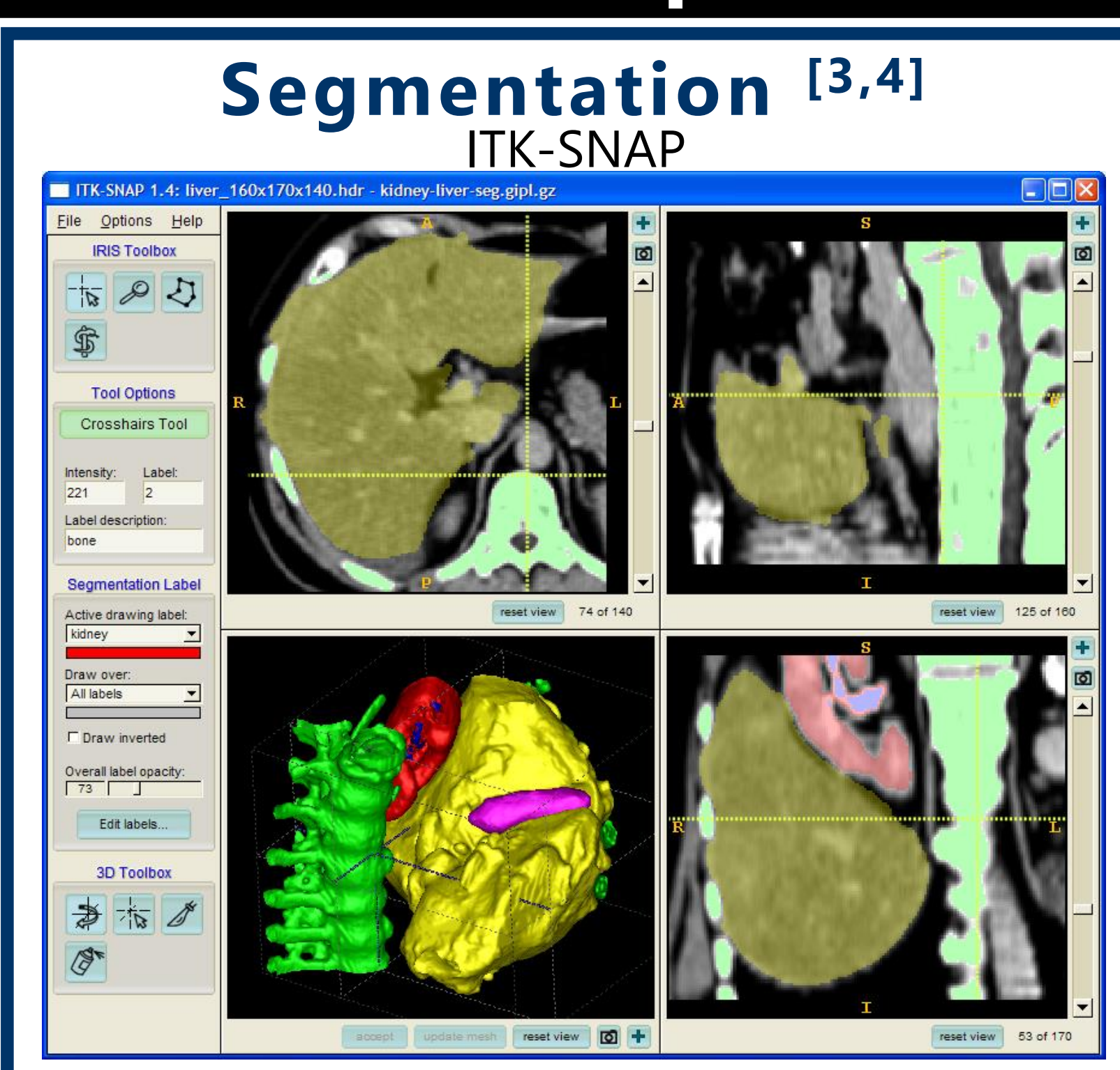
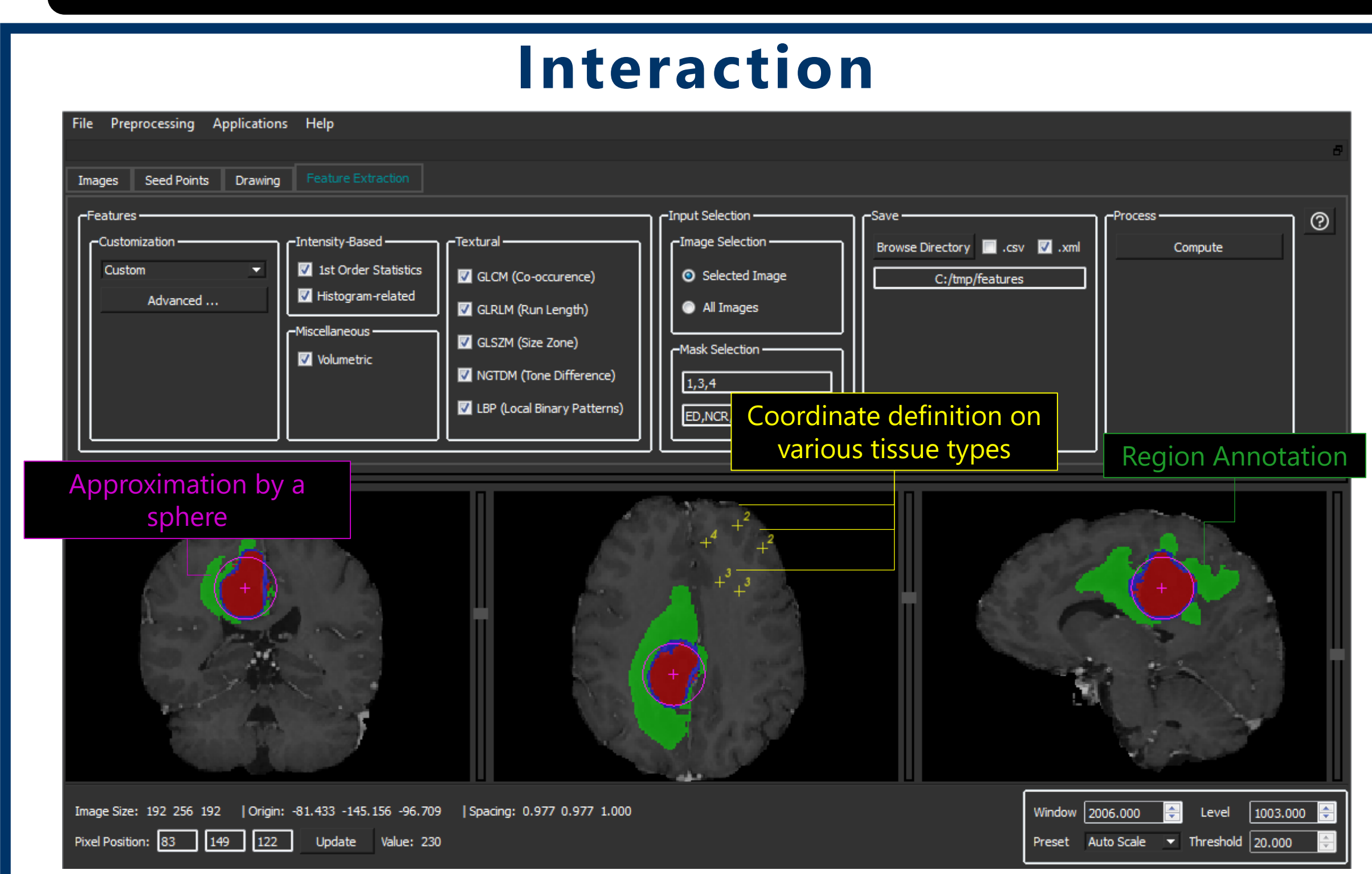
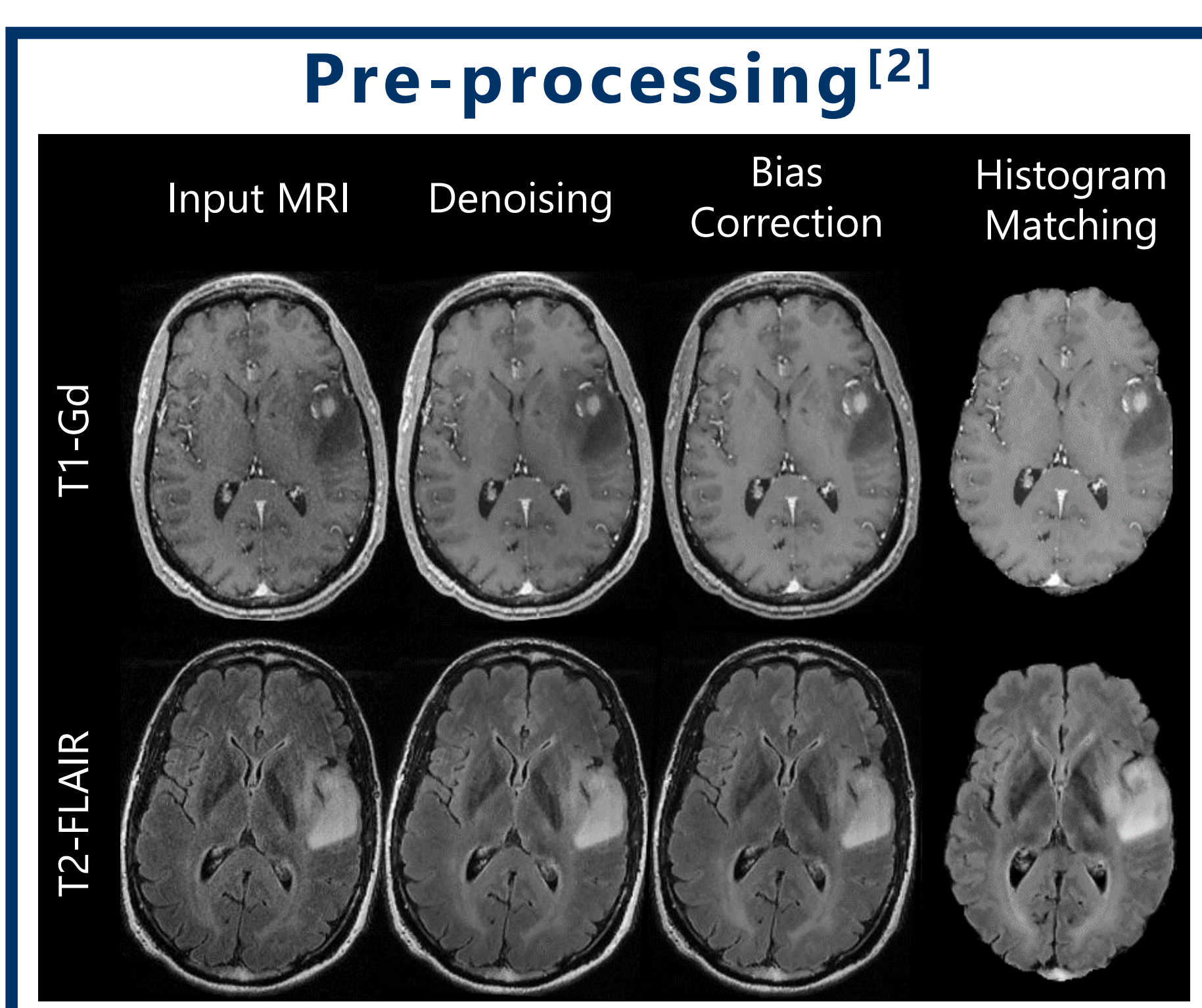


@CBICA

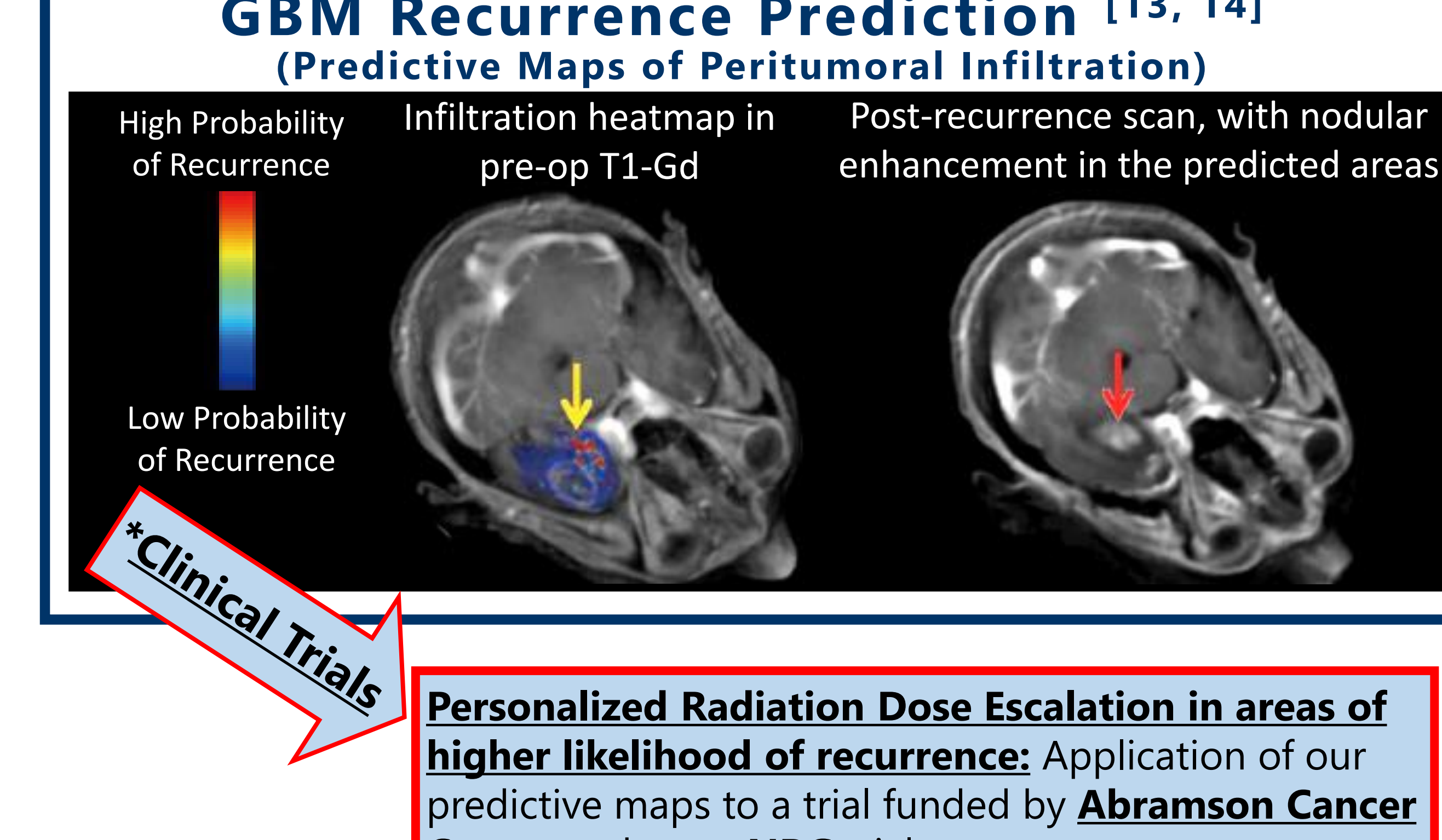
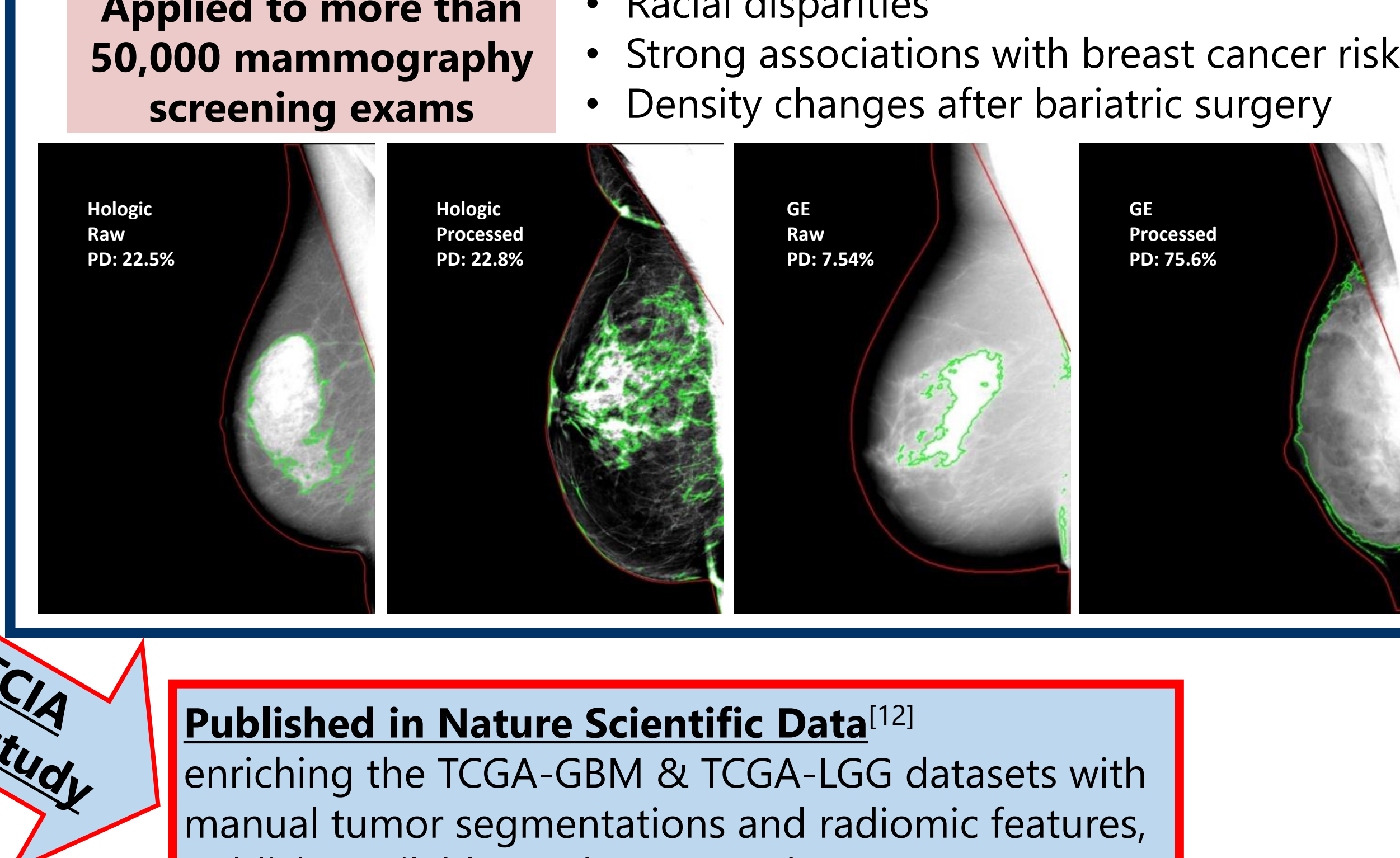
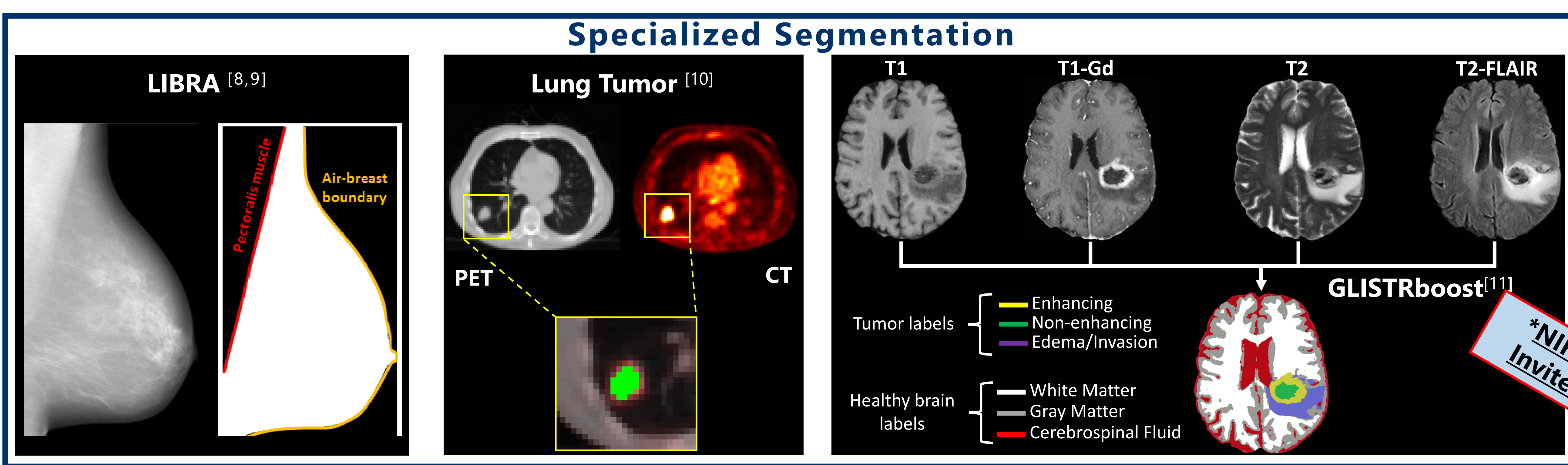
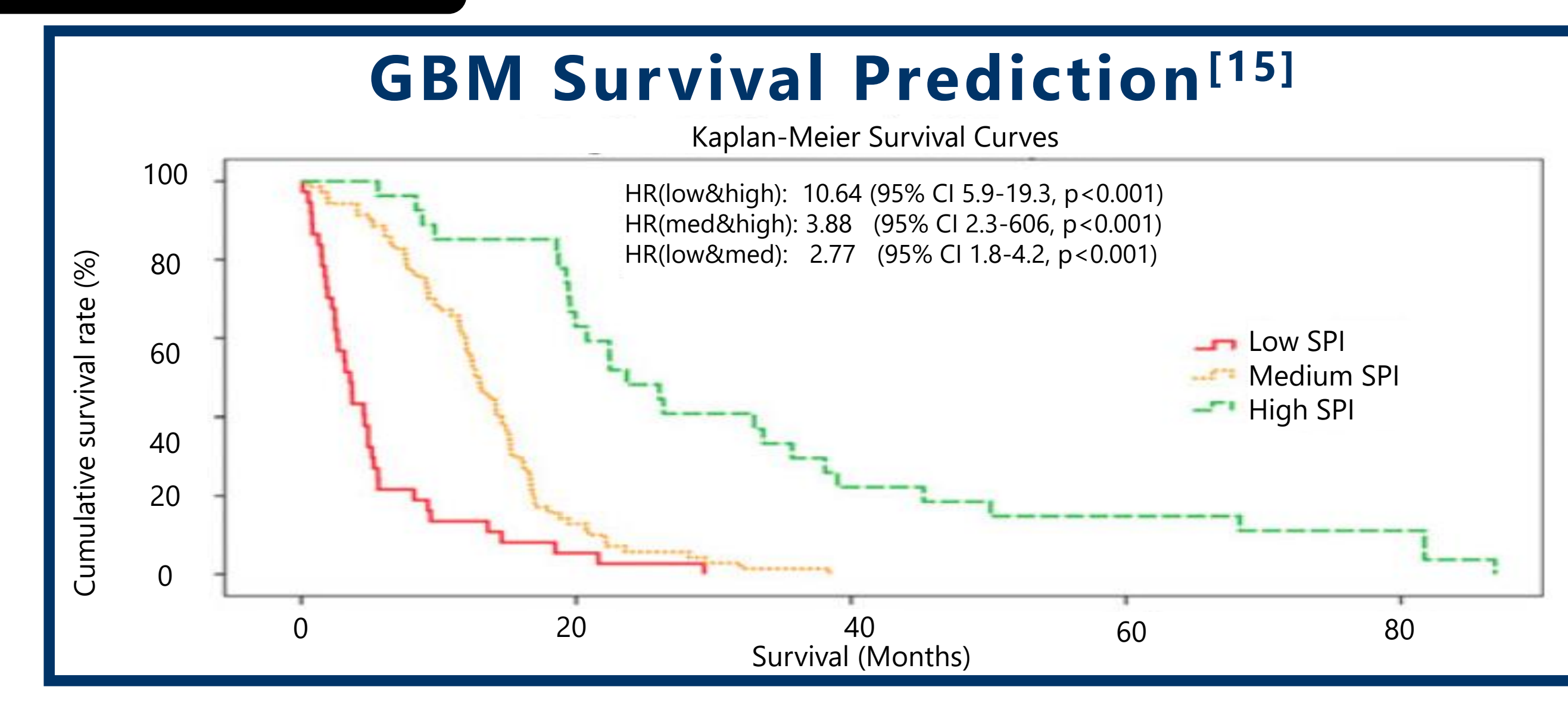
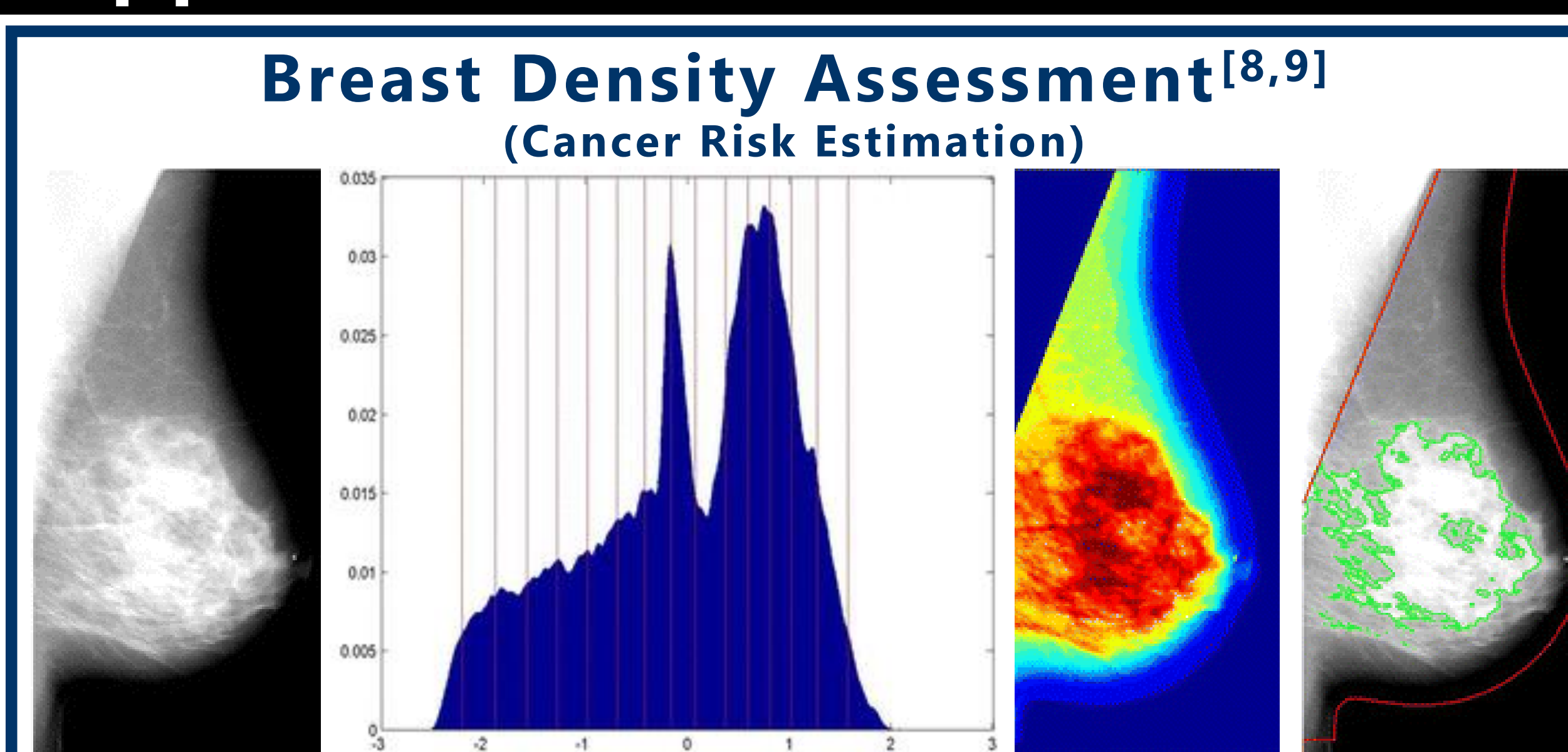
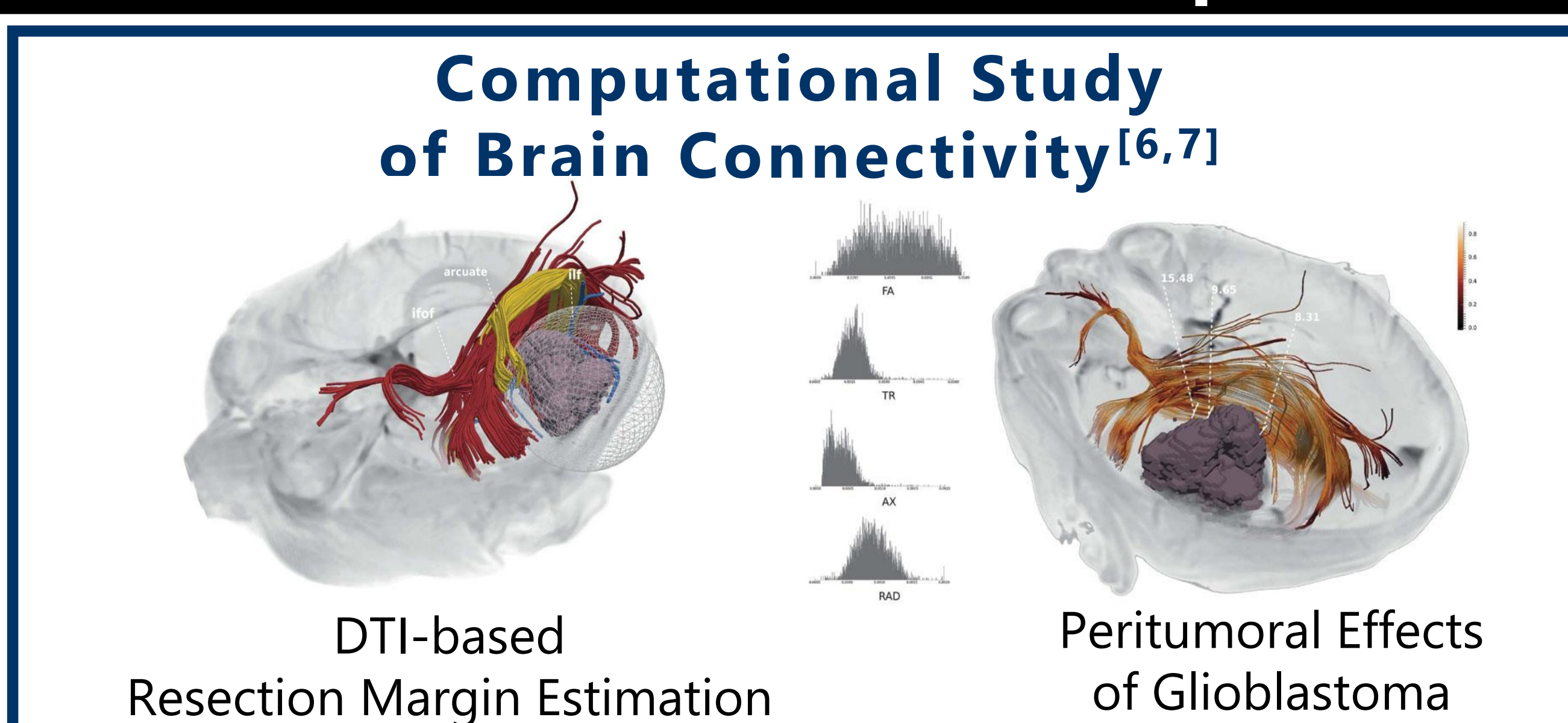
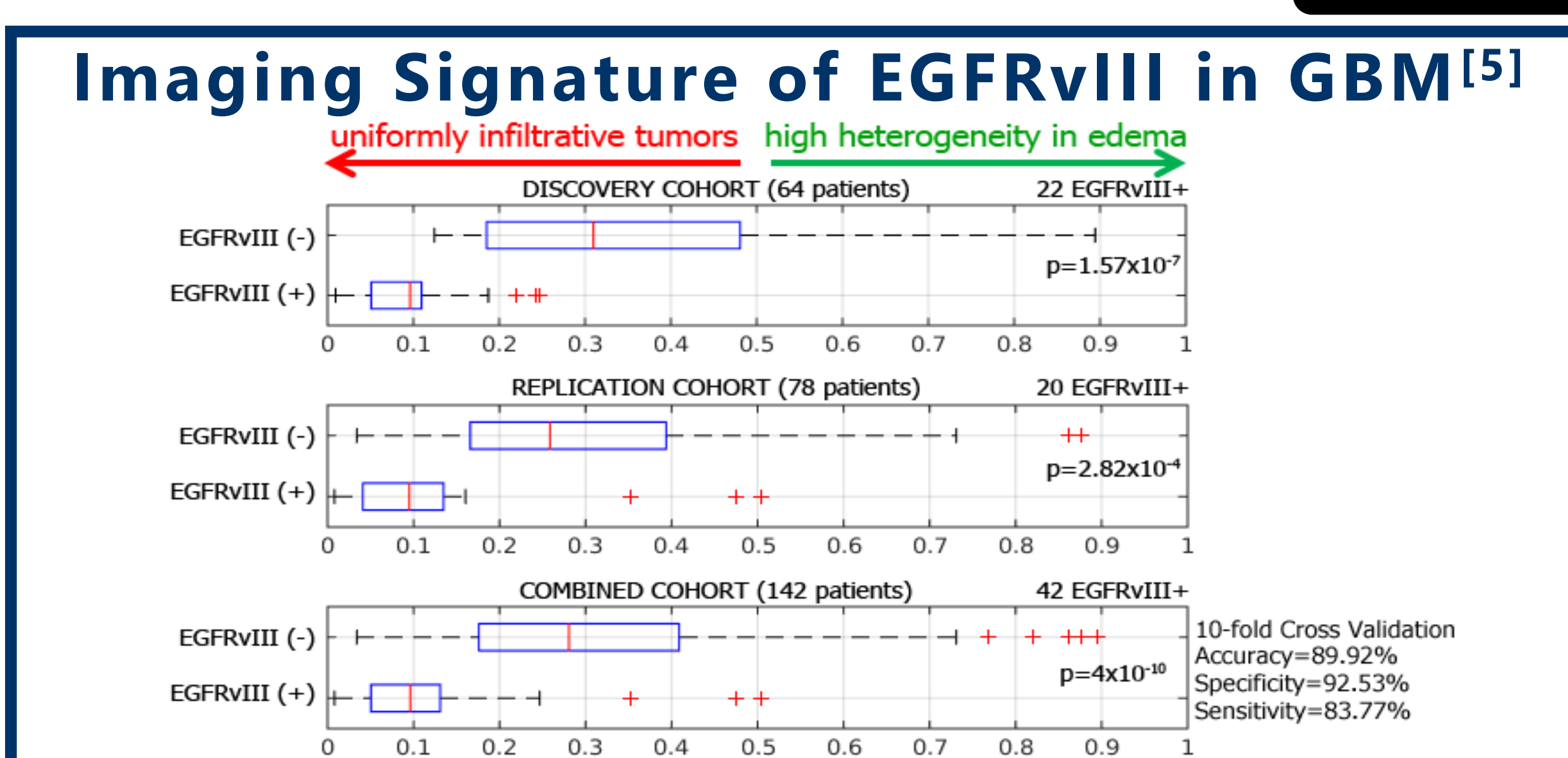


Functionality

General Purpose Tools



Specialized Applications



Future Work

Model Training Functionality | **Brain:** Distinct radiographic subtypes of GBM^[14] | **Breast:** Comprehensive parenchymal texture characterization | **Deep Learning** pipelines for segmentation^[17]

[1] Davatzikos et al., *Cancer imaging phenomics toolkit: quantitative imaging analytics for precision diagnostics and predictive modeling of clinical outcome*, **Journal of Medical Imaging**, 2018

[2] Shinohara et al., *Statistical normalization techniques for magnetic resonance imaging*, **NeuroImage Clinical**, 2014

[3] Gaonkar et al., *Adaptive geodesic transform for segmentation of vertebrae on CT images*, **Medical Imaging**, 2014

[4] Yushkevich et al., *ITK-SNAP: An interactive tool for semi-automatic segmentation of multi-modality biomedical images*, **IEEE Eng Med Biol Soc.**, 2016

[5] Bakas et al., *In vivo detection of EGFRvIII in glioblastoma via perfusion magnetic resonance imaging signature consistent with deep peritumoral infiltration*, **Clinical Cancer Research**, 2017

[6] Tunc et al., *Individualized Map of white matter pathways: connectivity-based paradigm for neurosurgical planning*, **Neurosurgery**, 2016

[7] Tunc et al., *Automated tract extraction via atlas based Adaptive Clustering*, **NeuroImage**, 2014

[8] Keller et al., *Estimation of breast percent density in raw and processed full field digital mammography images*, **Medical Physics**, 2012

[9] Keller et al., *Preliminary evaluation of the publicly available Laboratory for Breast Radiodensity Assessment (LIBRA) software tool*, **Breast Cancer Research** 2015

[10] Li et al., *Predicting treatment response and survival of early-stage non-small cell lung cancer patients treated with stereotactic body radiation therapy using unsupervised two-way clustering of radiomic features*, **Int. Workshop on Pulmonary Imaging**, 2017

[11] Bakas et al., *GLISTRboost: Combining multimodal MRI segmentation, registration, and biophysical tumor growth modeling with gradient boosting machines for glioma segmentation*, **Springer, LNCS**, 2016

[12] Bakas et al., *Advancing TCGA glioma MRI collections with expert segmentation labels and radiomic features*, **Nature Scientific Data**, 2017.

[13] Akbari et al., *Imaging Surrogates of infiltration obtained via multiparametric imaging pattern analysis predict subsequent location of recurrence of glioblastoma*, **Neurosurgery**, 2016

[14] Rathore et al., *Radiomic signature of infiltration in peritumoral edema predicts subsequent recurrence in glioblastoma: Implications for personalized radiotherapy planning*, **Journal of Medical Imaging**, 2018

[15] Macyszyn et al., *Imaging patterns predict patient survival and molecular subtype in glioblastoma via machine learning techniques*, **Neuro-Oncology**, 2016

[16] Rathore et al., *Imaging pattern analysis reveals three distinct phenotypic subtypes of GBM with different survival rates*, **Neuro-Oncology**, 2016

[17] Kamnitsas et al., *Efficient multi-Scale 3D CNN with fully connected CRF for accurate brain lesion segmentation*, **Medical Image Analysis**, 2016