



CANADA'S EXPERIENCE IN COMMERCIALIZING REGENERATIVE, CELL AND GENE THERAPIES

CELLICON VALLEY '21 - THE FUTURE OF CELL AND GENE THERAPIES A VIRTUAL SYMPOSIUM

Michael H. May PhD
President & CEO

May 6th 2021

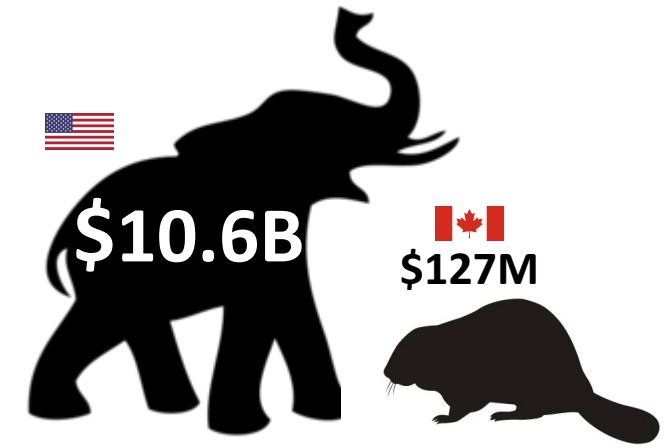
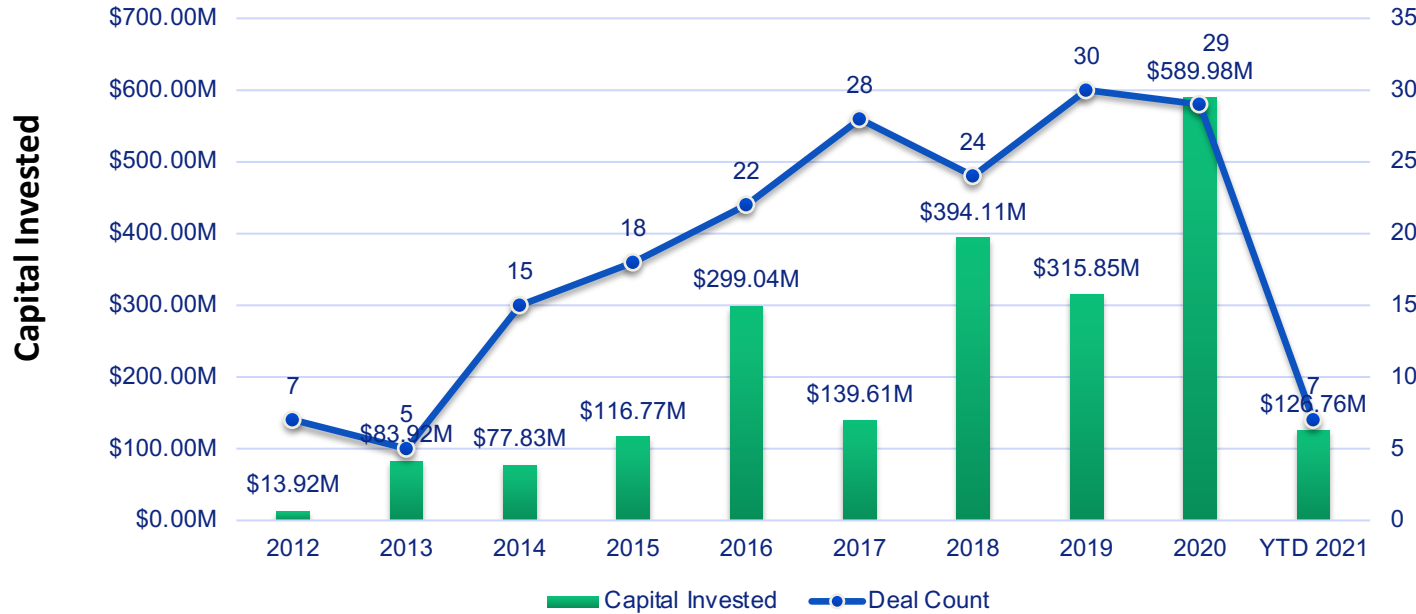


Commercializing
Living Therapies

Canadian Focus: Strategic Investment in Ecosystem Building



Canadian Landscape – Growing, But...



Capital Invested, YTD, 2021 (all figures USD)

Notable 2020/2021 Canadian deals



Raised \$85M Series A (Feb 10th, 2021)



Raised \$20M Series A (June 1st, 2020)



Acquired by Century Therapeutics for an undisclosed amount



Raised \$220M in an IPO (June 19th, 2020)



Raised \$8.89M Series A (Nov 10th, 2020)



Raised \$55M Series A (Aug 27, 2020)



Raised \$25M in a 2PO (Feb 26th, 2021)




Raised \$3M in early-stage financing (2020)

CCRM Background



Established in 2011
\$15M Founding Funding
\$100M Raised To-Date



120+ Employees
Global Network of Partners
~10% Funding from Gov't



Six Business Units
Specialized Facilities
250+ FFS Projects



500+ Opportunities Assessed
25 Tech Dev Projects Ongoing
12 Portfolio Companies

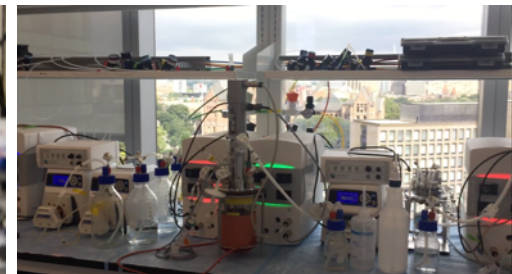


Toronto is home to 40% of Canadian biotech industry

30+ specialized medical and science research centers

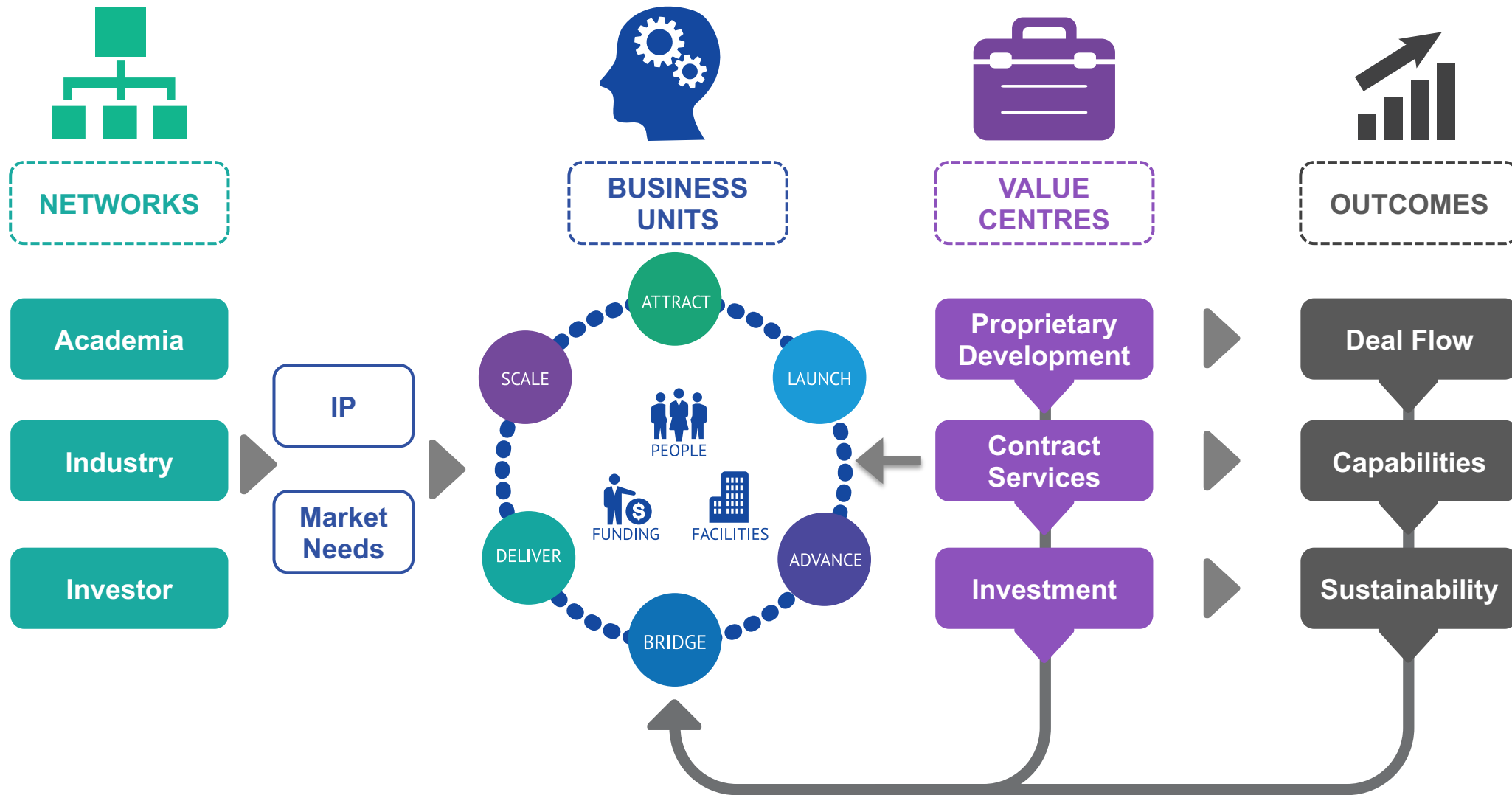
Over 140,000 students and researchers

Toronto Biotechnology sector ranks 4th in North America



CCRM's Ecosystem- Based Business Model

Synergy of Company Creation/Scaling, CDMO Services & Strategic Investing

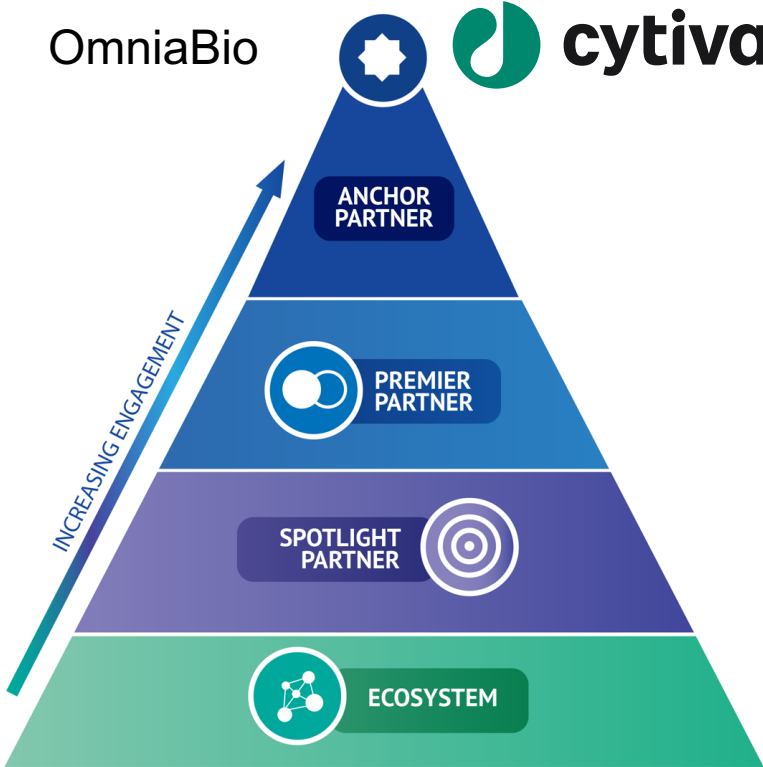


Foundational Activity - Stakeholder Engagement

INDUSTRY ENGAGEMENT FRAMEWORK



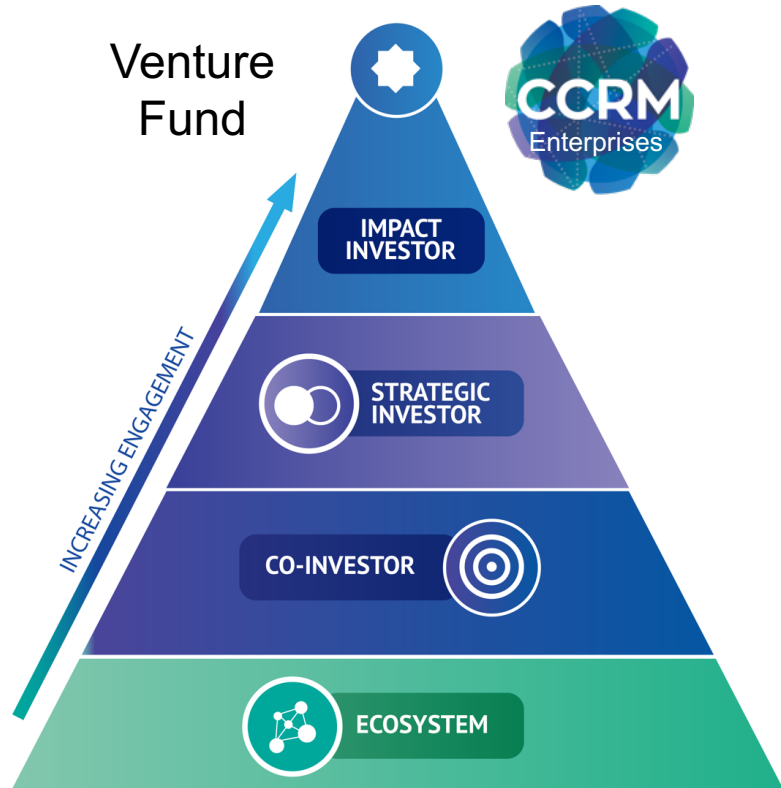
OmniaBio



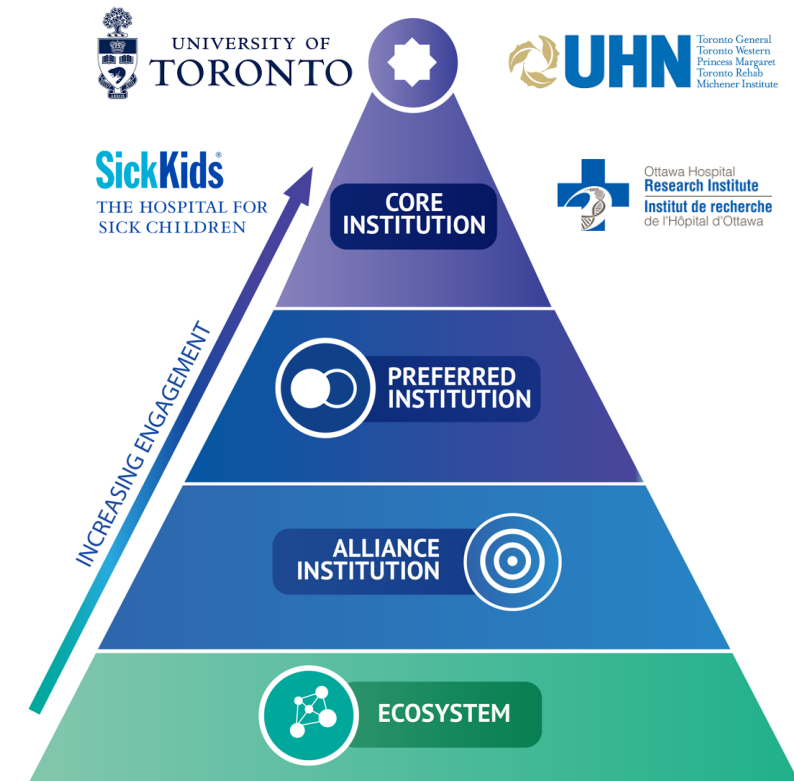
INVESTOR ENGAGEMENT FRAMEWORK



Venture Fund



ACADEMIC ENGAGEMENT FRAMEWORK



Focus 1 – Grow a Continuum of Manufacturing Capability



Centre for Advanced Cell Therapy Technologies (CATCT)

- 35 Employees
- Manufacturing Technology Development
- Process Development
- 10,000 sq.ft. laboratory
- Partnership with UofT, Cytiva and Other Tech Companies



Centre for Cell and Vector Production (CCVP)

- 60+ Employees
- 8 Class B Cell Suites
- 2 Viral Vector Suites
- QC/QA Laboratory
- Phase I/II Clinical Scale
- 20,000 sq.ft.
- Partnership with UHN



Future Commercial Scale Manufacturing – OmniaBio

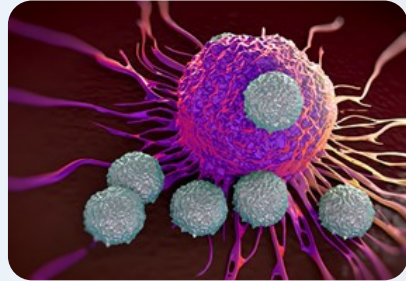


- Scaled launch 2022 and 2024
- 350,000 sq. ft.
- Autologous & Allogeneic
- Modular Design
- Flexible operating/partnership model

Integration of CDMO Services & Technology Development



A history of iPSC reprogramming, gene editing, diff., and banking



Automated, closed, integrated T-cell PD and manufacturing



Custom and high-throughput media development



Infrastructure and expertise for viral vector USP and DSP development



A strong emphasis on analytical development



Developing optimal cryopreservation strategies



Highly experienced operations/MSAT staff

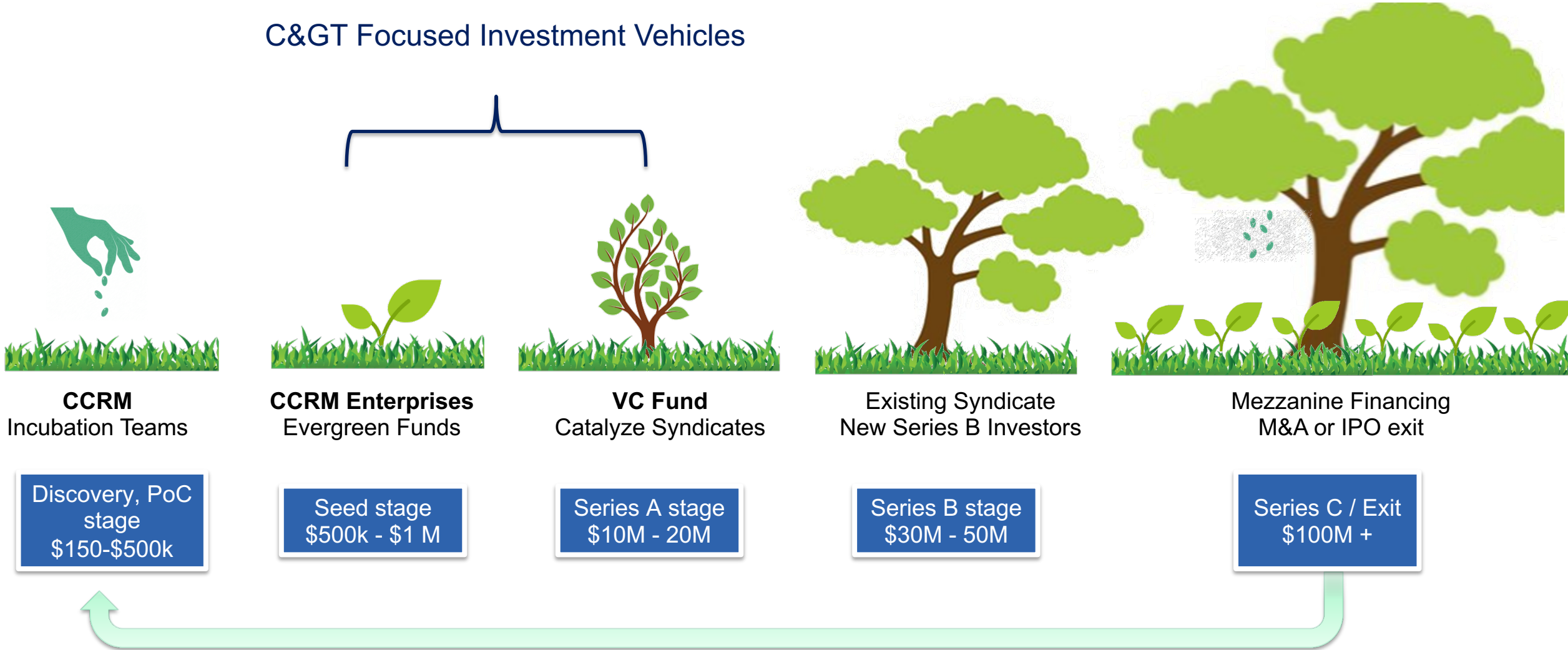
10 GMP clean rooms for production of CGT products

Available lab and GMP suite capacity in 2020-2022

Fit-for-purpose, phase-appropriate quality systems

Focus 2 – Support a Continuum of Strategic Investment

C> Focused Investment Vehicles

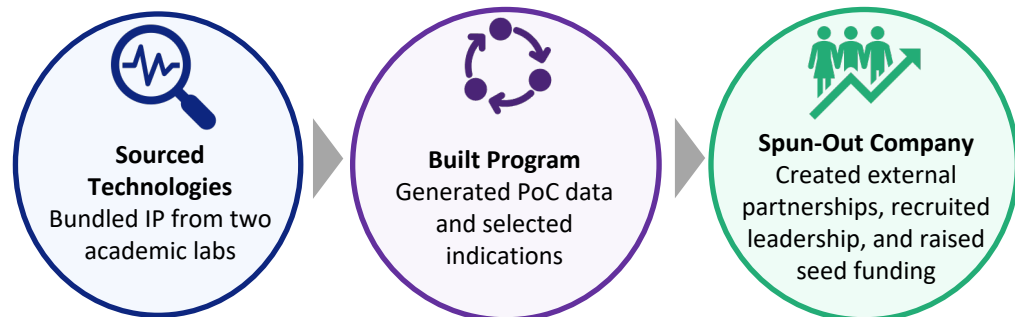


Recent Success



Raised \$105M in oversubscribed Series A round

Notch is an immune cell therapy company developing universal, off-the-shelf T cell therapies derived from renewable stem cell sources



In Nov 2019, Notch announced major deal with Allogene Therapeutics

<https://www.globenewswire.com/news-release/2019/11/05/1940970/0/en/Allogene-Therapeutics-and-Notch-Therapeutics-Announce-Collaboration-to-Research-and-Develop-Induced-Pluripotent-Stem-Cell-iPSC-Derived-Allogeneic-Therapies-for-Hematologic-Cancer-1.html>

The Notch Therapeutics Story

1 Bundling of Technologies & IP Protection

Technologies from the labs of Juan Carlos Zúñiga-Pflücker and Peter Zandstra, CCRM CSO. CCRM led in filing IP and hired student inventor to continue developing IP.

2 Internal Development

CCRM validated the technology and designed PoC studies to demonstrate therapeutic utility.

3 Company Ideation

CCRM developed the business plan and secured an entrepreneur-in-residence with a track record of success.

4 External Partnerships & Funding

CCRM worked to develop strategic partnerships and built relationships with investors.

5 Company Launch

CCRM co-founded company with academic institutions and facilitated licensing of the technology to newly formed Notch Therapeutics.

6 Continued Infrastructure & Manufacturing Support

CCRM designed a comprehensive support strategy, including ongoing lab contract services.

Focus 3 – Enhance a Continuum of Talent Development



Nurturing Leaders of Tomorrow

- Innovation & Technical Excellence
- Entrepreneurship
- Access to Network & Opportunities

Positive Trends – Focus on Manufacturing, Investment & Talent

Ecosystem Value	2016 NEWCO	2018 NEWCO	2020 NEWCO	Future Spin-Off 2022
Research Capability	✓	✓	✓	✓
IP Generation	✓	✓	✓	✓
Clinical Infrastructure	✓	✓	✓	✓
Domestic Investment	✗	✗	✓	>50%
Manufacturing Platforms	✗	✓	✓	✓
Clinical Manufacturing	✗	✓	✓	✓
Commercial Manufacturing	✗	✗	✗	✓
GMP Training	✗	✗	✗	✓
Canadian Employment	<5%	~50%	>50%	>90%

Strategic Investment is Generating Impact



- Global Outreach & Presentations
- Industry Boards & Committees
- Industry Initiatives



CATCT



CCVP



OmniaBio



Academic, Industry & Investor Networks





Michael H. May
President and CEO
michael.may@ccrm.ca
647-223-1452

Thank you