

● REVIEW

A tissue-engineered rostral migratory stream for directed neuronal replacement

John C. O'Donnell^{1,2}, Kritika S. Katiyar^{1,2,3}, Kate V. Panzer⁴, D. Kacy Cullen^{1,2,4,*}

1 Center for Brain Injury & Repair, Department of Neurosurgery, Perelman School of Medicine, University of Pennsylvania, Philadelphia, PA, USA

2 Center for Neurotrauma, Neurodegeneration & Restoration, Corporal Michael Crescenz Veterans Affairs Medical Center, Philadelphia, PA, USA

3 School of Biomedical Engineering, Drexel University, Philadelphia, PA, USA

4 Department of Bioengineering, School of Engineering and Applied Science, University of Pennsylvania, Philadelphia, PA, USA

Funding: This work was supported by the National Institutes of Health [U01-NS094340 (Cullen), F31-NS090746 (Katiyar) & F32-NS103253 (O'Donnell)], University of Pennsylvania [Center for Undergraduate Research & Fellowships (Panzer)], Michael J. Fox Foundation [Therapeutic Pipeline Program #9998 (Cullen)], Department of Veterans Affairs [RR&D Merit Review I01-RX001097 (Cullen) & BLR&D Merit Review I01-BX003748 (Cullen)], and the U.S. Army Medical Research and Materiel Command [W81XWH-16-1-0796 (Cullen)].

Abstract

New neurons are integrated into the circuitry of the olfactory bulb throughout the lifespan in the mammalian brain—including in humans. These new neurons are born in the subventricular zone and subsequently mature as they are guided over long distances *via* the rostral migratory stream through mechanisms we are only just beginning to understand. Regeneration after brain injury is very limited, and although some neuroblasts from the rostral migratory stream will leave the path and migrate toward cortical lesion sites, this neuronal replacement is generally not sustained and therefore does not provide enough new neurons to alleviate functional deficits. Using newly discovered microtissue engineering techniques, we have built the first self-contained, implantable constructs that mimic the architecture and function of the rostral migratory stream. This engineered microtissue emulates the dense cord-like bundles of astrocytic somata and processes that are the hallmark anatomical feature of the glial tube. As such, our living microtissue-engineered rostral migratory stream can serve as an *in vitro* test bed for unlocking the secrets of neuroblast migration and maturation, and may potentially serve as a living transplantable construct derived from a patient's own cells that can redirect their own neuroblasts into lesion sites for sustained neuronal replacement following brain injury or neurodegenerative disease. In this paper, we summarize the development of fabrication methods for this microtissue-engineered rostral migratory stream and provide proof-of-principle evidence that it promotes and directs migration of immature neurons.

Key Words: rostral migratory stream; glial tube; astrocyte; neuroblast; brain injury; neural repair; neural regeneration; tissue engineering

Introduction

Neurogenesis continues post-development in the brains of humans and other mammals, but it is limited to the dentate gyrus and subventricular zone (SVZ) (Zhao et al., 2008; Ming and Song, 2011). Remarkably, newly born neurons from the SVZ migrate long distances to the olfactory bulb along a pathway comprised of aligned astrocytes referred to as the glial tube. This rostral migratory stream (RMS) is active throughout one's lifetime, and therefore may present an endogenous source to replace neurons lost due to aging, neurodegenerative disease, and/or brain injury. However, neuroblasts are intrinsically programmed to follow the RMS owing to a precise presentation of spatial cues along astrocytes comprising the glial tube (Gengatharan et al., 2016). Neural tissue engineering yields promising three-dimensional (3D) constructs to facilitate nervous system regeneration by replicating specific neuroanatomical features. In an exciting recent development, we have created the first implantable microtissue designed to replicate the structure and function of the glial tube (**Figure 1**). This biologically-inspired strategy—referred to as microtissue astrocytic constructs (MACs)—may therefore be useful to redirect migration of endogenous neuroblasts *in vivo* and could also serve as an anatomically-relevant test bed to study the

RMS or accelerate neuroblast maturation *in vitro*. MACs are generated based on newfound microtissue engineering techniques that promote self-assembly of astrocytes into networks of longitudinally-aligned bundles (Winter et al., 2016; Katiyar et al., 2018). In compelling proof-of-concept experiments, we found that MACs directly facilitate the alignment and migration of immature neurons.

Anatomical Inspiration and Characterization to Date

Glial tube astrocytes possess a bipolar morphology, extending processes in opposite directions along the RMS in parallel with each other to form a cord-like bundle. We have established that these structural features are recapitulated in MACs (Winter et al., 2016; Katiyar et al., 2018). As summarized in **Figure 1B**, the overall biofabrication process involves seeding the inner lumen of custom-built, hollow hydrogel micro-columns with dissociated astrocytes. Then, over a remarkably short timeframe of just several hours, the cells spontaneously self-assemble into dense cables of longitudinally-aligned astrocytes with bipolar morphology. This MAC biofabrication process was optimized by systematically testing several criteria, including culture media constituents,

*Correspondence to:

D. Kacy Cullen, Ph.D.,

dkacy@pennmedicine.upenn.edu.

orcid:

0000-0002-5355-5216

(D. Kacy Cullen)

doi: 10.4103/1673-5374.235215

Accepted: 2018-05-14

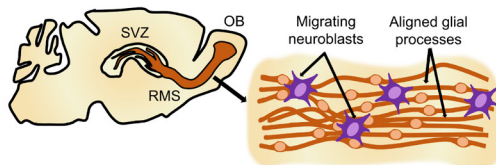
micro-column diameter, collagen concentration, and cell seeding density (Winter et al., 2016). We found that culturing in serum-free defined media induced a process-bearing morphology in astrocytes, whereas media containing serum promoted a proliferative phenotype of flat astrocytes lacking processes, consistent with previous reports (Morrison and de Vellis, 1981; Kim et al., 1983; Katiyar et al., 2016). Therefore, all micro-columns loaded with astrocytes were fed serum-free medium. The micro-columns were fabricated using agarose, specifically chosen based on biocompatibility, mass transport properties, optical transparency, and perhaps most importantly for this application, lack of adhesive ligands so that while providing geometric structure it would not inhibit 3D cell/microtissue remodeling. As such, we found that it was necessary to coat the inner lumen of the agarose micro-columns with type 1 rat tail collagen to promote initial astrocyte adhesion. Subsequently, the breakthrough most responsible for MAC self-assembly was our observation that decreasing the inner diameter of the micro-columns increased the degree of astrocytic alignment, with diameters of $< 350 \mu\text{m}$ resulting in preferential process extension along the longitudinal axis. These results suggested that the angle of curvature of the inner lumen had a strong influence over the direction of process growth. We also optimized the collagen concentration within the inner lumen. Collagen loaded at 2.0 mg/mL formed a solid core within the micro-column, preventing seeding with

astrocytes, while concentrations of 0.0 and 0.5 mg/mL resulted in a lack of cell adhesion. Fortunately, 1.0 mg/mL collagen not only provided necessary adhesive properties, but was also sufficiently permissive as to allow astrocytes to remodel the extracellular matrix, pulling in collagen with their processes to incorporate it into their longitudinally-aligned bundles. To test for effects of seeding density, astrocytes were loaded into micro-columns with an inner diameter of $350 \mu\text{m}$ at “low” ($2-3 \times 10^5$ cells/mL), “medium” ($5-6 \times 10^5$ cells/mL), or “high” ($9-12 \times 10^5$ cells/mL) cell concentrations. While all seeding densities resulted in alignment of processes, higher densities were associated with robust bundling of astrocytes and collagen to form dense cables of longitudinally-aligned astrocytes.

These bundled MACs were found to be exceptionally durable and flexible (**Figure 1G**), and they exhibit encouraging signs of neuronal support and interaction (**Figure 1I**). Indeed, we previously demonstrated that MACs can be extracted from the hydrogel micro-columns after bundling and reshaped into various orientations without damage to the astrocytes (Winter et al., 2016; Katiyar et al., 2018). This durability allows for the implantation profile to be significantly reduced by extracting the bundles from the larger (“sacrificial”) micro-column before implantation, and the flexibility allows the constructs to assume a non-linear shape to accommodate specialized anatomical needs. We have

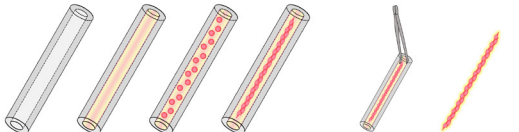
A Neurobiological inspiration

Glial Tube: directing immature neuron migration to the olfactory bulb along the rostral migratory stream



B

Columnar biomaterial encasement, Addition of ECM to inner lumen, Astrocyte seeding, Self assembly into aligned living scaffolds, Extraction from micro-column, Conforming biomaterial encapsulation



C In vivo applications

Engineered Glial Tube: directing neuroblast migration to restore lost neuronal populations

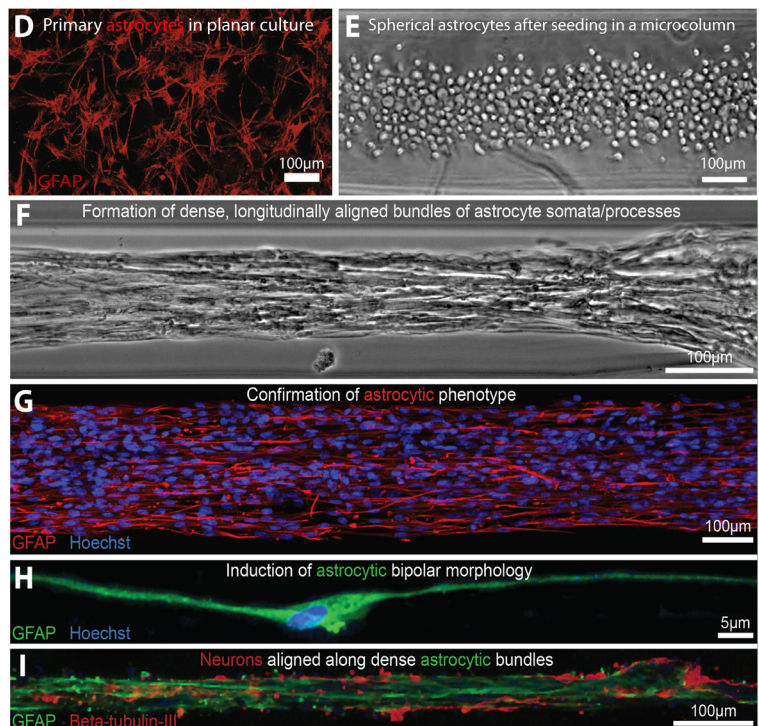
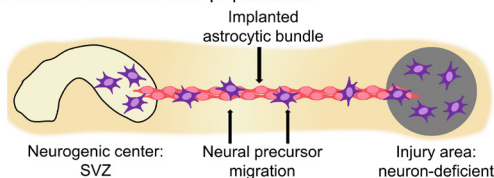


Figure 1 Conceptual overview and characterization of microtissue astrocytic constructs (MACs).

Diagrams in the left column illustrate (A) features of the rostral migratory stream (RMS) that inspired MAC design, (B) general fabrication workflow, and (C) potential *in vivo* application. The right column provides phase contrast and fluorescent microscopy images highlighting MAC characteristics that emulate the glial tube, including (D) primary astrocytes in two-dimensional (2D) culture with stellate morphology prior to seeding in microcolumns, (E) spherical astrocytes adhering to collagen shortly after seeding in a microcolumn, (F) astrocyte self-assembly into dense, longitudinally-aligned cords, (G) astrocytic expression of glial fibrillary acidic protein (GFAP) with no damage to fibers after extraction from the microtube, (H) bipolar astrocytic morphology, and (I) alignment of primary neurons along astrocytic processes when co-seeded with astrocytes during MAC fabrication (Some aspects adapted with permission from Winter et al., 2016 and Katiyar et al., 2018). SVZ: Subventricular zone; OB: olfactory bulb; ECM: extracellular matrix. Scale bars: 100 μm in D–G, I; 5 μm in H.

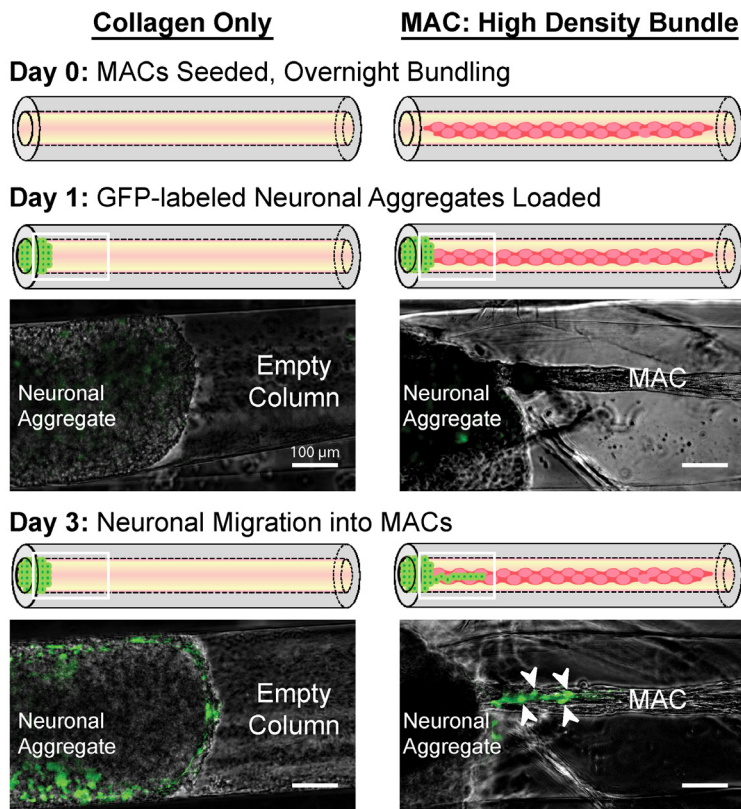


Figure 2 Immature neurons migrate out of cortical neuronal aggregates and along bundled microtissue astrocytic constructs (MACs), but not into micro-columns coated with collagen-only. Embryonic cortical neurons were dissociated, transduced to express green fluorescent protein (GFP), aggregated into micro-spheres, and seeded at the end of micro-columns either with or without pre-formed MACs. GFP fluorescence from neuronal aggregates is overlaid with phase contrast images after aggregate implantation into micro-columns. Saturated GFP signal from dense neuronal aggregates is not displayed, to allow for visualization of individual neurons. White arrows indicate examples of migrating neurons. Scale bars: 100 μ m.

previously performed stereotaxic implantation of similarly-shaped neuronal constructs into the cortex, thalamus, and striatum, so the procedures have all been well-established in our laboratory (Struzyna et al., 2015b; Harris et al., 2016; Serruya et al., 2017). Moving forward, these microtissue constructs may provide a powerful *in vitro* platform for studying the RMS, and offer exciting potential for enhancing and redirecting endogenous neuroblast migration *in vivo* to promote neuroregeneration after injury or disease.

A Unique *In Vitro* Test Bed to Study Neuroblast Migration and Maturation

Periodically, members of a subset of neural stem cells in the SVZ take a step towards maturation by becoming neuroblasts. These neuroblasts then migrate within a cord-like bundle of astrocytes comprising the glial tube of the RMS, arriving in the olfactory bulb where they continue to develop into mature interneurons that integrate into the existing circuitry (Lois and Alvarez-Buylla, 1994; Peretto et al., 1997; Wang et al., 2011; Gengatharan et al., 2016). Many basic questions facing adult neurogenesis, migration, maturation, and physiological relevance remain unanswered (Ming and Song, 2011). An *in vitro* system for studying these phenomena would offer new capabilities and experimental control. For example, an *in vitro* RMS model could allow for precise manipulation of conditions at the source, migratory path, or destination (after exiting the far end of the *in vitro* RMS) to answer important questions regarding the timing and location of cell fate determination during adult neurogenesis. Contact with astrocytes in other *in vitro* systems increases

neuroblast migration distance and proliferation of precursor cells to form new neuroblasts, but results from these studies lacked signature features of the RMS, such as astrocyte organization or neuroblast chain migration (Lim and Alvarez-Buylla, 1999; Zhang et al., 2016). Studying adult neurogenesis in human tissue presents even greater challenges of accessibility and control. An *in vitro* RMS made from human induced neural progenitor cells would allow investigators to ask specific questions that are currently untestable. It is noteworthy that as a complimentary proof-of-concept for this general approach, we have previously used a custom *in vitro* paradigm consisting of traumatically-injured 3D neuronal-astrocytic co-cultures as a test bed to study and optimize factors associated with therapeutic implantation of exogenous neural stem cells (Cullen et al., 2007, 2011).

Regarding the use of MACs as an *in vitro* test bed, our recent studies suggest that MACs effectively emulate the morphology, organization, and protein expression of the glial tubes with respect to driving immature neuron migration, we performed a preliminary migration assay experiment. On day 0, collagen-coated micro-columns were either seeded with astrocytes or left empty to serve as controls. Cortical neurons were harvested from embryonic day 18 rats and a “forced cell aggregation” method was applied using gentle centrifugation within inverted pyramid micro-wells to form neuronal aggregate micro-spheres as described previously (Struzyna et al., 2017). Overnight, neuronal aggregates were virally transduced (adeno-associated virus (AAV) vector, synapsin promoter) to express green fluorescent protein (GFP), and separately, astrocytes within micro-columns

aligned and bundled the collagen-coated lumen to form MACs. On day 1, we placed the GFP-labeled cortical neuronal aggregates in one end of micro-columns containing densely bundled MACs, or into the cell-free collagen control micro-columns. On day 3 (48 hours post-aggregate placement) we observed chain migration of immature neurons out of the aggregates and along the MACs; in contrast, neuron migration was not observed in the collagen control micro-columns, demonstrating proof-of-principle that this technology can selectively facilitate and direct migration of immature neurons (Figure 2). Therefore, MACs offer a unique platform to study the RMS and neuroblast migration *in vitro*.

Neuroregeneration after Injury

Neuronal proliferation/migration is altered after brain injury, in some cases resulting in migration of neuroblasts to injury sites, and their presence within the first week after injury can improve recovery *via* neurotrophic factor release. However, during this acute period the environment is not conducive to neuronal replacement or regeneration. Formation of a glial scar after injury—while vital for reestablishing the blood brain barrier and limiting the spread of inflammation and excitotoxicity (Rolls et al., 2009)—has also been shown in many studies to act as an extrinsic barrier to axon regeneration and cell migration (Fawcett and Asher, 1999; Silver and Miller, 2004; Burda and Sofroniew, 2014; Ohtake and Li, 2015). However, neuroblasts from the SVZ were found to migrate out of the RMS and into damaged striatum after middle cerebral artery occlusion in rats, where they developed into mature neurons and formed synapses with surviving neurons 90 days post injury, though the level of neuronal replacement did not appear to have a physiological impact (Yamashita et al., 2006). This suggests that although neuroregeneration in the adult mammalian brain is severely lacking, inherent mechanisms do exist for neuronal replacement. MACs can potentially amplify and augment the brain's existing mechanisms for replacing lost neurons in order to achieve levels of neuroregeneration that are sufficient to improve recovery.

Implantation of MACs to Enhance Endogenous Neuroregenerative Processes

MACs are the first implantable microtissue constructs designed to redirect the migration of endogenous neuroblasts from the RMS to sites throughout the brain. Whereas prior studies have transplanted fetal grafts, single cell suspensions, or cells in 3D matrices, our method is considerably different in that the final cytoarchitecture of the MAC—mimicking that of the RMS—is fully biofabricated *in vitro* and then precisely delivered to redirect migration of endogenous neuroblasts to sites of neurodegeneration. While the direct implantation of neural stem cells into injury sites has been shown to improve outcome by providing neurotrophic factors, appropriate maturation and integration of these exogenous cells to functionally replace lost neurons remains a significant challenge (Rolfe and Sun, 2015; Yamashita et al., 2017). In contrast, endogenous neuroblasts from the SVZ

have been observed migrating into injured striatum and forming mature, synaptically-integrated neurons (Yamashita et al., 2006). MACs may be able to expand and sustain this natural regenerative response of SVZ neuroblasts after injury. Of note, migration and maturation of neuroblasts along the RMS relies on complex, dynamic signaling between astrocytes and neuroblasts (Mason et al., 2001; García-Marqués et al., 2010; Gengatharan et al., 2016). Unlike extracellular-matrix-based constructs that simply offer a permissive substrate (Fon et al., 2014; Ajioka et al., 2015; Fujioka et al., 2017), MACs possess a unique astrocytic microtissue makeup that can provide directional, structural, and neurotrophic support, making them capable of sending and responding to complex signals with migrating neuroblasts and the local micro-environment. In this way, MACs are an example of a tissue engineered “living scaffold”—a class of implantable constructs designed to facilitate nervous system regeneration by emulating developmental mechanisms facilitated by living cells in a defined anatomically-inspired architecture—similar to other constructs being developed by our group (Struzyna et al., 2014, 2015a).

Mimicking the RMS may also facilitate development of neuroblasts during migration along MACs, allowing for the new neurons to functionally replace lost neurons after the majority of the degeneration has occurred instead of merely acting as neurotrophic factories in the acute and sub-acute time periods. Moreover, their miniature form factor allows for minimally invasive, stereotactic delivery into the brain (Harris et al., 2016). In rat models, we have previously demonstrated the ability to precisely microinject allogeneic neuronal microtissue constructs, which maintain pre-transplant architecture, survive, and integrate into the native nervous system (Struzyna et al., 2015b; Harris et al., 2016; Serruya et al., 2017). In addition to directing and augmenting delivery and maturation of neuroblasts, MACs may also be able to deliver neuroblasts through the glial scar and into the injury site, thereby providing a sustained supply of new endogenous neurons to replace lost cells. If the astrocytes in our construct become reactive via interaction with the glial scar, we can modify secondary biomaterial encasement to prevent MAC disorganization and scar-mediated activation. This approach to mimicking the brain's existing method for neuronal replacement may be relevant for multiple neurological afflictions, including traumatic brain injury (TBI), stroke, and neurodegenerative disease.

Conclusions and Future Directions

We have developed techniques to fabricate densely-bundled cables of longitudinally-aligned bipolar astrocytes that are durable and flexible enough for extraction from their microtubule chrysalis to allow for minimally-disruptive transplantation. We have demonstrated that MACs can facilitate migration of neuroblasts *in vitro*, providing evidence of functional emulation of the RMS in addition to their structural similarities with the glial tube. MACs provide a novel *in vitro* test bed for answering questions about the RMS, neuroblast migration, and cell fate determination that could not previously be addressed due to technical limita-

tions. Current approaches to regeneration after TBI, stroke, or neurodegeneration can generally be categorized as either pharmacological or stem cell transplant strategies. In developing MACs, we are pursuing a new strategy to amplify the brain's inherent—though currently insufficient—mechanism for replacing lost neurons, in which neuroblasts migrate tangentially out of the RMS toward sites of injury. The glial tubes of the RMS are the most efficient means of facilitating neuroblast migration and maturation in the mammalian brain through adulthood, and we believe that by emulating the glial tubes, MACs can enhance and sustain the brain's natural regenerative response.

Acknowledgments: The authors thank Dayo O. Adewole, University of Pennsylvania for technical assistance with these studies.

Author contributions: JCO'D participated in the design and execution of the work described, and wrote the initial draft of the manuscript. KSK participated in design and execution and KVP participated in execution. DKC conceived of the strategy, participated in design, and guided execution. All authors contributed to editing the manuscript.

Conflicts of interest: None declared.

Financial support: This work was supported by the National Institutes of Health [U01-NS094340 (Cullen), F31-NS090746 (Katiyar) & F32-NS103253 (O'Donnell)], University of Pennsylvania [Center for Undergraduate Research & Fellowships (Panzer)], Michael J. Fox Foundation [Therapeutic Pipeline Program #9998 (Cullen)], Department of Veterans Affairs [RR&D Merit Review I01-RX001097 (Cullen) & BLR&D Merit Review I01-BX003748 (Cullen)], and the U.S. Army Medical Research and Materiel Command [W81XWH-16-1-0796 (Cullen)].

Copyright license agreement: The Copyright License Agreement has been signed by all authors before publication.

Plagiarism check: Checked twice by iThenticate.

Peer review: Externally peer reviewed.

Open access statement: This is an open access journal, and articles are distributed under the terms of the Creative Commons Attribution-Non-Commercial-ShareAlike 4.0 License, which allows others to remix, tweak, and build upon the work non-commercially, as long as appropriate credit is given and the new creations are licensed under the identical terms.

References

- Ajioka I, Jinnou H, Okada K, Sawada M, Saitoh S, Sawamoto K (2015) Enhancement of neuroblast migration into the injured cerebral cortex using laminin-containing porous sponge. *Tissue Eng Part A* 21:193-201.
- Burda JE, Sofroniew MV (2014) Reactive gliosis and the multicellular response to CNS damage and disease. *Neuron* 81:229-248.
- Cullen DK, Stabenfeldt SE, Simon CM, Tate CC, LaPlaca MC (2007) In vitro neural injury model for optimization of tissue-engineered constructs. *J Neurosci Res* 85:3642-3651.
- Cullen DK, Wolf JA, Smith DH, Pfister BJ (2011) Neural tissue engineering for neuroregeneration and biohybridized interface microsystems in vivo (Part 2). *Crit Rev Biomed Eng* 39:241-259.
- Fawcett JW, Asher RA (1999) The glial scar and central nervous system repair. *Brain Res Bull* 49:377-391.
- Fon D, Zhou K, Ercole F, Fehr F, Marchesan S, Minter MR, Crack PJ, Finkelstein DI, Forsythe JS (2014) Nanofibrous scaffolds releasing a small molecule BDNF-mimetic for the re-direction of endogenous neuroblast migration in the brain. *Biomaterials* 35:2692-2712.
- Fujioka T, Kaneko N, Ajioka I, Nakaguchi K, Omata T, Ohba H, Fässler R, García-Verdugo JM, Sekiguchi K, Matsukawa N, Sawamoto K (2017) $\beta 1$ integrin signaling promotes neuronal migration along vascular scaffolds in the post-stroke brain. *EBioMedicine* 16:195-203.
- García-Marqués J, De Carlos JA, Greer CA, López-Mascaraque L (2010) Different astroglia permissivity controls the migration of olfactory bulb interneuron precursors. *Glia* 58:218-230.
- Gengatharan A, Bammann RR, Saghatelian A (2016) The role of astrocytes in the generation, migration, and integration of new neurons in the adult olfactory bulb. *Front Neurosci* 10:149.
- Harris JP, Struzyna LA, Murphy PL, Adewole DO, Kuo E, Cullen DK (2016) Advanced biomaterial strategies to transplant preformed micro-tissue engineered neural networks into the brain. *J Neural Eng* 13:016019.
- Katiyar KS, Winter CC, Gordián-Vélez WJ, O'Donnell JC, Song YJ, Hernandez NS, Struzyna LA, Cullen DK (2018) Three-dimensional tissue engineered aligned astrocyte networks to recapitulate developmental mechanisms and facilitate nervous system regeneration. *J Vis Exp*:e55848.
- Katiyar KS, Winter CC, Struzyna LA, Harris JP, Cullen DK (2016) Mechanical elongation of astrocyte processes to create living scaffolds for nervous system regeneration. *J Tissue Eng Regen Med* 11:2737-2751.
- Kim SU, Stern J, Kim MW, Pleasure DE (1983) Culture of purified rat astrocytes in serum-free medium supplemented with mitogen. *Brain Res* 274:79-86.
- Lim DA, Alvarez-Buylla A (1999) Interaction between astrocytes and adult subventricular zone precursors stimulates neurogenesis. *Proc Natl Acad Sci USA* 96:7526-7531.
- Lois C, Alvarez-Buylla A (1994) Long-distance neuronal migration in the adult mammalian brain. *Science* 264:1145-1148.
- Mason HA, Ito S, Corfas G (2001) Extracellular signals that regulate the tangential migration of olfactory bulb neuronal precursors: inducers, inhibitors, and repellents. *J Neurosci* 21:7654-7663.
- Ming GL, Song H (2011) Adult neurogenesis in the mammalian brain: significant answers and significant questions. *Neuron* 70:687-702.
- Morrison RS, de Vellis J (1981) Growth of purified astrocytes in a chemically defined medium. *Proc Natl Acad Sci USA* 78:7205-7209.
- Ohtake Y, Li S (2015) Molecular mechanisms of scar-sourced axon growth inhibitors. *Brain Res* 1619:22-35.
- Peretto P, Merighi A, Fasolo A, Bonfanti L (1997) Glial tubes in the rostral migratory stream of the adult rat. *Brain Res Bull* 42:9-21.
- Rolfe A, Sun D (2015) Stem cell therapy in brain trauma: implications for repair and regeneration of injured brain in experimental TBI models. In: *Brain Neurotrauma: Molecular, Neuropsychological, and Rehabilitation Aspects* (Kobeissy FH, ed) *Frontiers in Neuroengineering*. Boca Raton (FL): CRC Press/Taylor & Francis.
- Rolls A, Shechter R, Schwartz M (2009) The bright side of the glial scar in CNS repair. *Nat Rev Neurosci* 10:235-241.
- Serruya MD, Harris JP, Adewole DO, Struzyna LA, Burrell JC, Nemes A, Petrov D, Kraft RH, Chen HI, Wolf JA, Cullen DK (2017) Engineered axonal tracts as "living electrodes" for synaptic-based modulation of neural circuitry. *Adv Funct Mater*.
- Silver J, Miller JH (2004) Regeneration beyond the glial scar. *Nat Rev Neurosci* 5:146-156.
- Struzyna LA, Adewole DO, Gordián-Vélez WJ, Grovola MR, Burrell JC, Katiyar KS, Petrov D, Harris JP, Cullen DK (2017) Anatomically inspired three-dimensional micro-tissue engineered neural networks for nervous system reconstruction, modulation, and modeling. *J Vis Exp*:e55609.
- Struzyna LA, Harris JP, Katiyar KS, Chen HI, Cullen DK (2015a) Restoring nervous system structure and function using tissue engineered living scaffolds. *Neural Regen Res* 10:679-685.
- Struzyna LA, Katiyar K, Cullen DK (2014) Living scaffolds for neuroregeneration. *Curr Opin Solid State Mater Sci* 18:308-318.
- Struzyna LA, Wolf JA, Mietus CJ, Adewole DO, Chen HI, Smith DH, Cullen DK (2015b) Rebuilding brain circuitry with living micro-tissue engineered neural networks. *Tissue Eng Part A* 21:2744-2756.
- Wang C, Liu F, Liu YY, Zhao CH, You Y, Wang L, Zhang J, Wei B, Ma T, Zhang Q, Zhang Y, Chen R, Song H, Yang Z (2011) Identification and characterization of neuroblasts in the subventricular zone and rostral migratory stream of the adult human brain. *Cell Res* 21:1534-1550.
- Winter CC, Katiyar KS, Hernandez NS, Song YJ, Struzyna LA, Harris JP, Cullen DK (2016) Transplantable living scaffolds comprised of micro-tissue engineered aligned astrocyte networks to facilitate central nervous system regeneration. *Acta Biomater* 38:44-58.
- Yamashita T, Liu W, Matsumura Y, Miyagi R, Zhai Y, Kusaki M, Hishikawa N, Ohta Y, Kim SM, Kwak TH, Han DW, Abe K (2017) Novel therapeutic transplantation of induced neural stem cells for stroke. *Cell Transplant* 26:461-467.
- Yamashita T, Ninomiya M, Hernández Acosta P, García-Verdugo JM, Sunabori T, Sakaguchi M, Adachi K, Kojima T, Hirota Y, Kawase T, Araki N, Abe K, Okano H, Sawamoto K (2006) Subventricular zone-derived neuroblasts migrate and differentiate into mature neurons in the post-stroke adult striatum. *J Neurosci* 26:6627-6636.
- Zhang ZN, Freitas BC, Qian H, Lux J, Acab A, Trujillo CA, Herai RH, Nguyen Huu VA, Wen JH, Joshi-Barr S, Karpiak JV, Engler AJ, Fu XD, Muotri AR, Almutairi A (2016) Layered hydrogels accelerate iPSC-derived neuronal maturation and reveal migration defects caused by MeCP2 dysfunction. *Proc Natl Acad Sci U S A* 113:3185-3190.
- Zhao C, Deng W, Gage FH (2008) Mechanisms and functional implications of adult neurogenesis. *Cell* 132:645-660.