

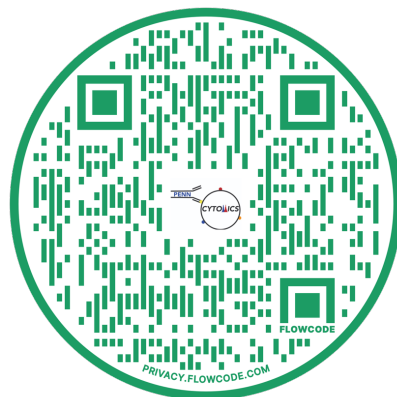
**\*Your samples must be FRESHLY filtered with a 35µm strainer. Small clumps/floaties can occur after 2 hours!**

# SortRemedy

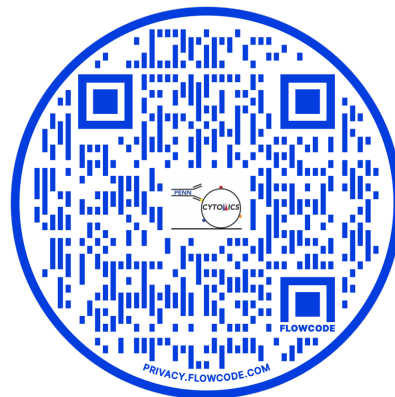
## Sorting Video Troubleshooting Guide

*The videos for this troubleshooting guide are from the Penn Cytomics YouTube page.*

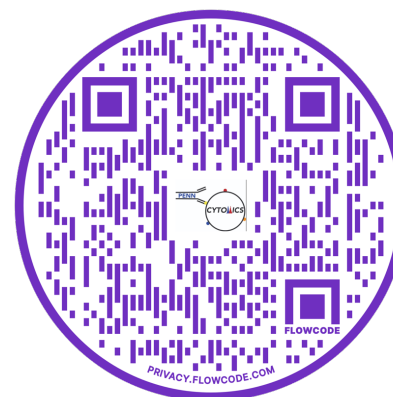
Quick Settings Check			
Nozzle µm	Pressure	Freq	Gap
70	70 psi	87.0	6
100 (Aria/Fusion)	20 psi	30.0	10
100 (S6)	20 psi	30.0	12
130	10 psi	12.0	16



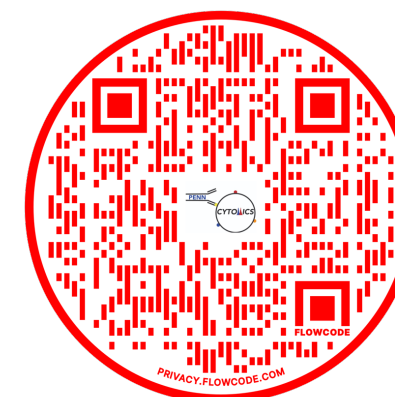
**Stream Not Turning On**



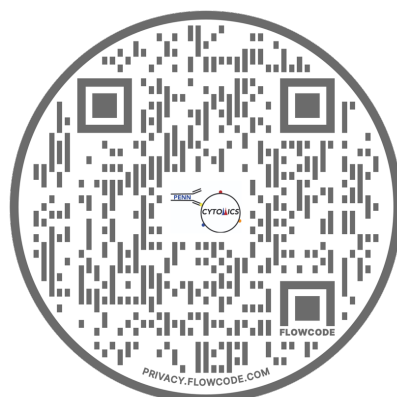
**BISO (Pressure) Error**



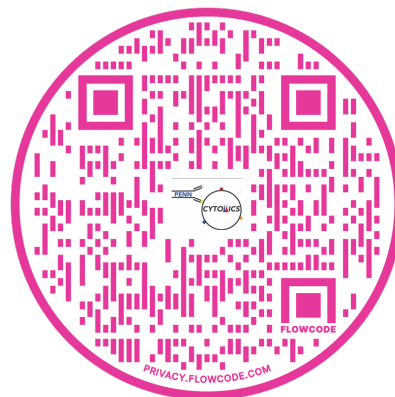
**Waste Probe Errors**



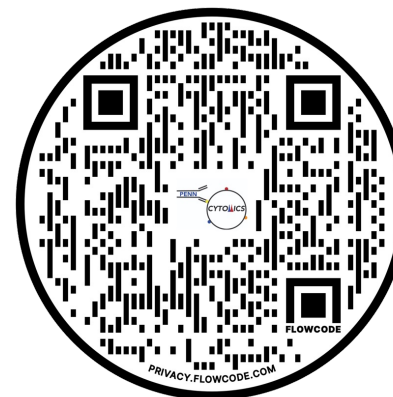
**Stream and Camera Alignment**



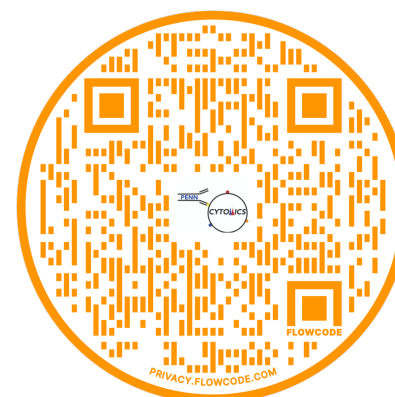
**Running AccuDrop**



**Removing a Clog in BSC**



**Sweet Spot Changed After Clog**



**No Events/CST Failing**