

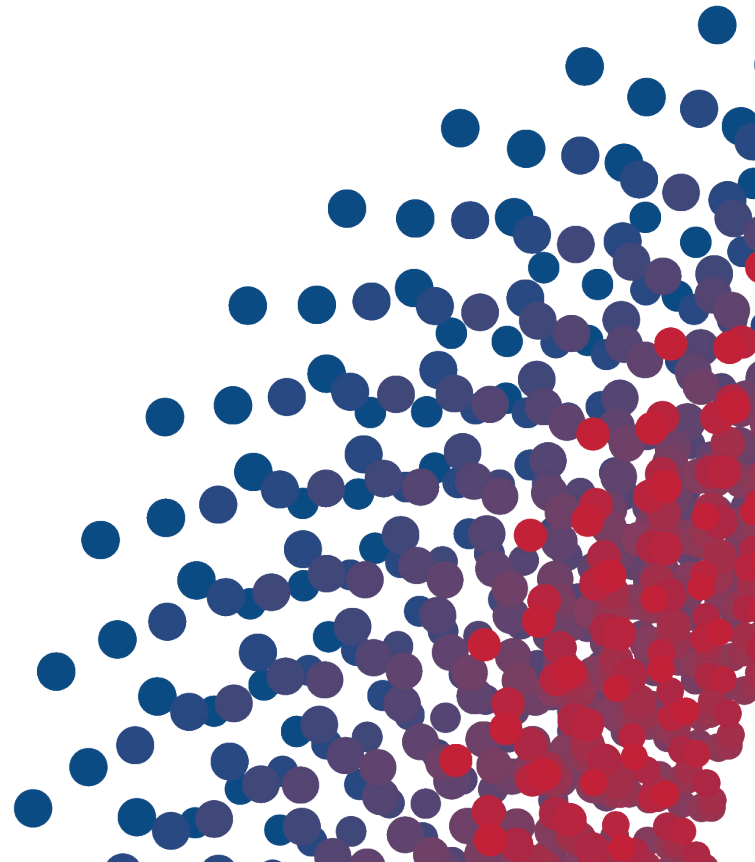


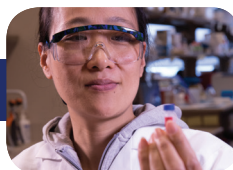
Penn Medicine

Perelman School of Medicine  
University of Pennsylvania Health System

# The Clyde F. Barker Penn Transplant House

## An Overview of Opportunities





# The Clyde F. Barker Penn Transplant House

## Support Opportunities

### House Endowment

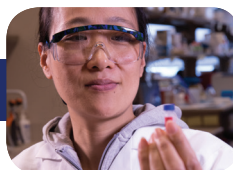
Made possible by the generosity of the Board of Women Visitors, the Clyde F. Barker Penn Transplant House has established an endowment to support vital funding for maintenance and guest stays in addition to enrichment programs like self-care courses and counseling. While this leadership gift was a crucial first-step toward securing long-term sustainability of this invaluable resource, the House is still in need of funds to offset the operating costs incurred on an annual basis. As such, it is the objective of the Penn Transplant Institute and Office of Development to grow the endowment to a sustainable level over the course of the next five years.



As with any home, structural needs and expenses that were not budgeted for often occur both in the form of immediate maintenance needs, and in the form of aesthetic needs in order to keep our home looking new and welcoming. A gift to the endowment will provide spendable income for the House on an annual basis in perpetuity, impacting guests for generations to come. The endowment fund is absolutely critical toward ensuring that our home is available for every patient and family with loved ones receiving transplant care.

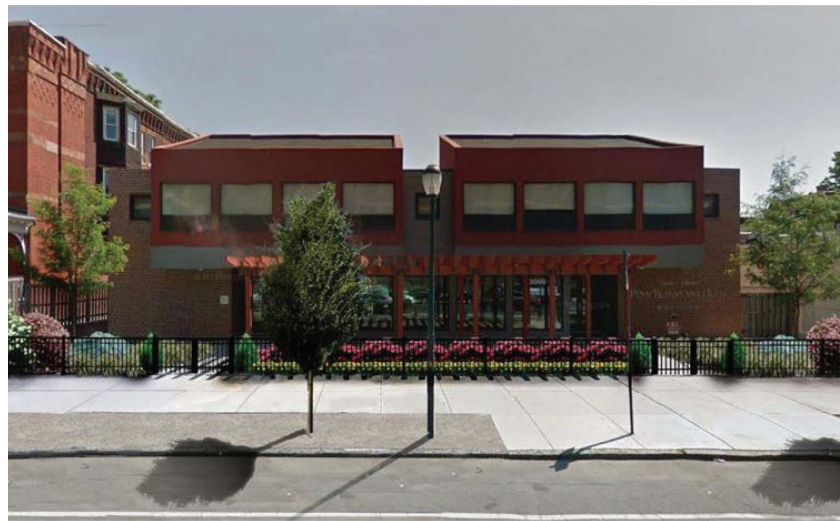
### Guest Assistance Fund

As one of the only resources in the region offering affordable lodging and support services to transplant recipients and their families, it's of principal importance that our home is available to all those in need. While we do our very best to ensure the lowest possible rate, for many who require months of treatment and recovery, the collective costs can be prohibitive. Through the generosity of friends of the Transplant House, we've established a fund to provide financial assistance to those who would otherwise be unable to afford the costs associated with guest stays. Gifts to this fund help to ensure that no one ever need be turned away due to financial constraints, and allows the Transplant House to live up to its mission to serve all Penn transplant patients, caregivers, and loved ones in need of affordable accommodations.



## Front Garden Expansion Project

The Clyde F. Barker Penn Transplant House serves as a place of sanctuary to provide a warm and comforting environment during a difficult time. As such, the House was designed with meticulous care for aesthetics and practicality; however, one particularly sizable area falls short of its fullest potential. Due to budget constraints in its initial construction, the scope of the plans for the front entranceway of the House were drastically narrowed. The result of which was a large, visible space at the front of the House that goes unutilized by guests, and does not embody the welcoming nature that's characteristic of the rest of the House.

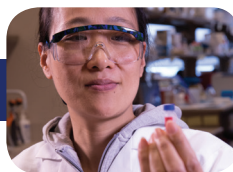


In order to remedy this, the recent expansion of the entrance area included extending garden beds, planting new vegetation and trees, and installing outdoor seating, tables and lighting. These upgrades have created a garden sanctuary which will serve as the “face” of the Transplant House—providing an inviting and peaceful setting for guests to enjoy for year to come. The renovation also created a much needed barrier from street noise pollution and further beautified the community. Only with the help of private support can we ensure the front garden entranceway will continue to truly represent the warmth and refuge that the Transplant House affords.

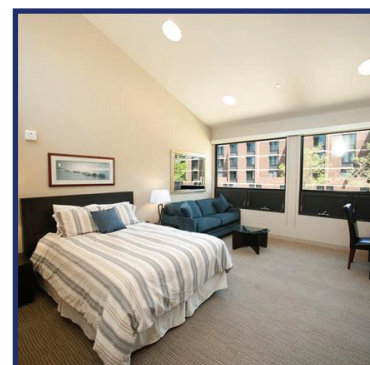
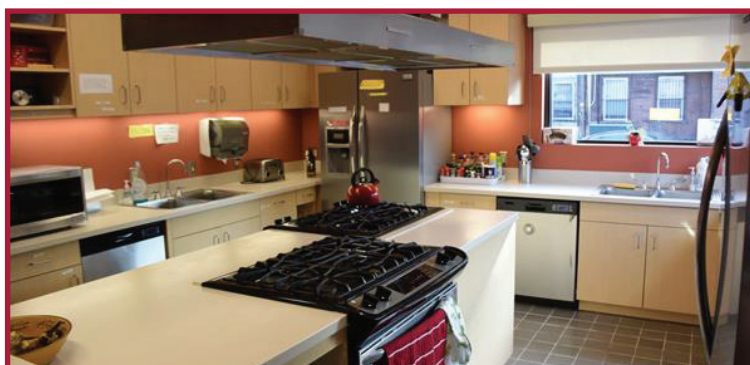
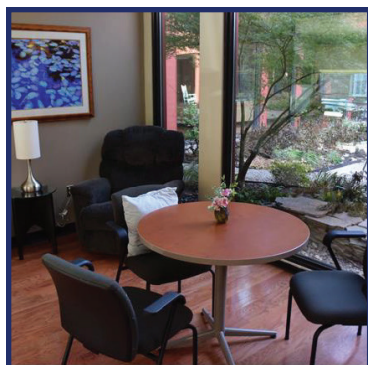
## Annual Operating Fund

While the endowment remains a top priority to ensure the long-term sustainability of the Transplant House, at the current balance it does not produce enough income to fully support the costs of operating and maintaining the 13,000 square-foot facility. One of the best ways to support the House is through our annual operating fund. A gift to this fund allows us to direct finances wherever they are needed most—be it maintaining the courtyard garden, common areas, and guest rooms, repairing structural wear and tear, or replacing broken appliances. The House's main purpose is providing comfort to patients, so costs tend to outpace revenue. Supporting the operating fund ensures that we continue to uphold the standards that our guests deserve.





## Naming Opportunities



Front Garden	\$250,000
Kitchen	\$150,000
Breakfast Nook	\$75,000
Upstairs Lounge	\$75,000
Bedrooms	\$50,000
Laundry Room	\$25,000
Courtyard Fountain	\$15,000
Courtyard Trees	\$10,000
Food Pantry	\$10,000
Half Moon Bench	\$5,000
Stair Riser	\$5,000
Adirondack & Rocking Chairs	\$2,500

### HELP PATIENTS FEEL AT HOME.

To learn more about the Clyde F. Barker Penn Transplant House and available giving opportunities contact Penn Medicine's Development office at 215.898.0578.

*Images are representational.*

*All donor recognition will be developed within Penn Medicine and University standards and shared with donors before designs are finalized.*

# The Penn Medicine Mission

Penn Medicine, a non-profit organization, is a world-renowned institution dedicated to discoveries that will advance science and patient care throughout the world, and to the education of the physicians and scientists of tomorrow to carry on our legacy of excellence.

*We appreciate your consideration of this appeal. If you wish to be removed from future fundraising appeals, please call us at (215) 898-0578, or send a written request with your name and address to Penn Medicine, 3535 Market Street, Suite 750, Philadelphia, PA 19104-3309, or email your request to [UPHScgift@upenn.edu](mailto:UPHScgift@upenn.edu) stating your desire to be removed from future Penn Medicine fundraising appeals.*



**Penn Medicine**

Perelman School of Medicine  
University of Pennsylvania Health System