

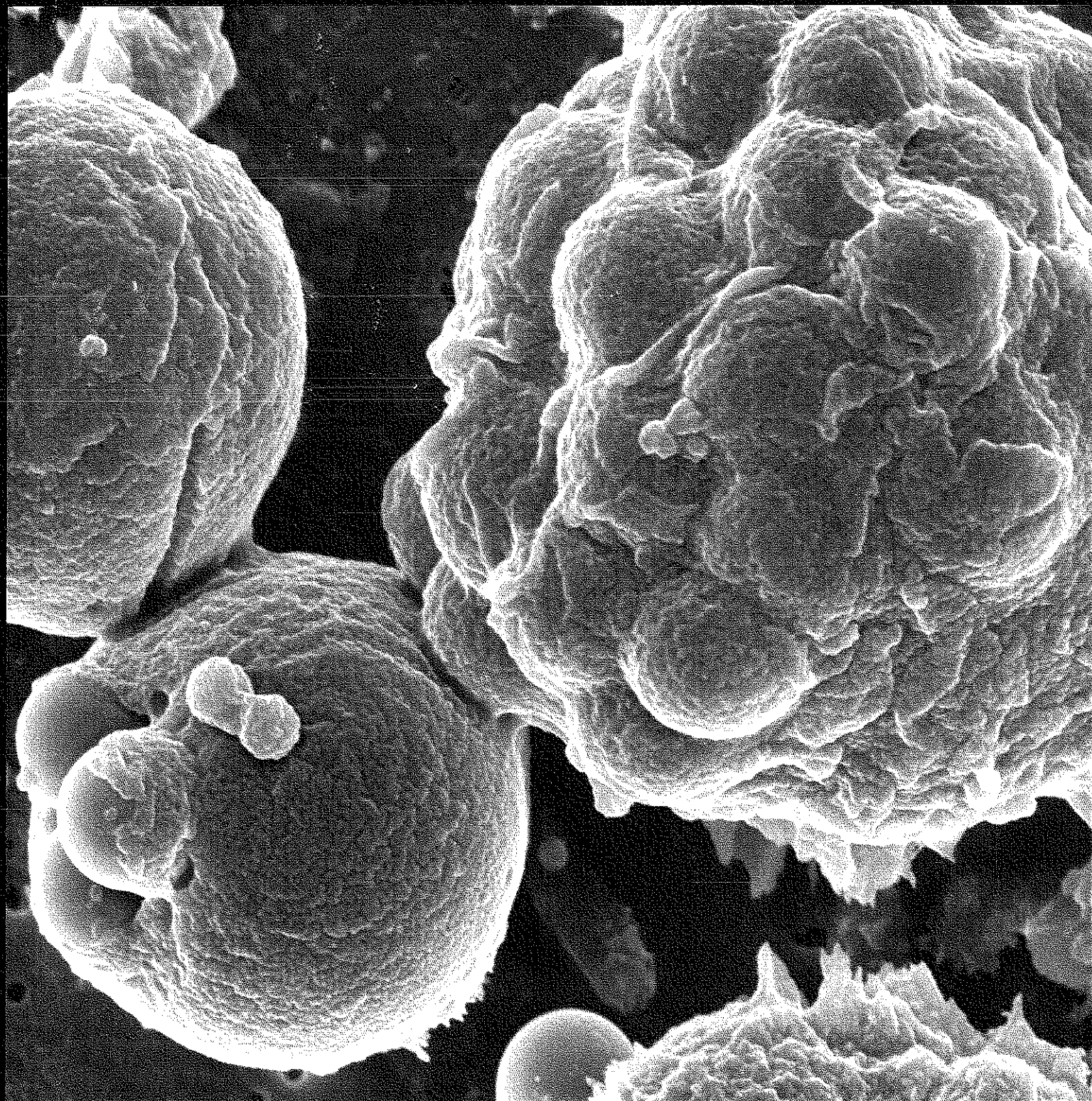
8

19th Annual Immunology Graduate Group Retreat

November 17-19, 2006

Willow Valley Resort and Conference Center

Lancaster, PA





The Immunology Graduate Group gratefully acknowledges the financial support of all of our contributors for the 19th Annual Retreat:

Grant support

T32 AI055428 "Immune System Development and Regulation"
T32CA09140 "The Immunobiology of Normal and Neoplastic Lymphocytes"
Program Project Grant NCI CA 93615
5T32 CA101968 "Training in Cancer and Immunopathobiology"

Institutes, Centers, Departments and Divisions

The Center for Vaccines and Immunotherapies, Children's Hospital of Philadelphia
The Department of Medicine, University of Pennsylvania
The Department of Neurology, University of Pennsylvania School of Medicine
The Department of Pathobiology, University of Pennsylvania School of Veterinary Medicine
The Department of Pathology, University of Pennsylvania School of Dental Medicine
The Department of Surgery, University of Pennsylvania School of Medicine
The Division of Allergy and Immunology, Children's Hospital of Philadelphia
The Division of Cell Pathology, Children's Hospital of Philadelphia
The Immunobiology Division in the Department of Pathology and Laboratory Medicine
The Penn Center for AIDS Research
The University of Pennsylvania Cancer Center
The Wistar Institute

Corporate Sponsorship

Wyeth Research
Glaxo-SmithKline
eBioscience
BD Biosciences
BIOMOL International L.P.
Cell Signalling Technology
Col Com Inc.
Integrated DNA Technologies
New England Biolabs, Inc.

The Immunology Graduate Group extends its special thanks to Wyeth Research and Glaxo-SmithKline for sponsorship of the Best Oral Presentation and Best Poster Presentation Awards.

Cover Photo: courtesy of J. Oriol Sunyer, School of Veterinary Medicine, featured on the cover of the October 2006 issue of *Nature Immunology*. Dr. Sunyer' group reported that B cells from early vertebrates have potent phagocytic and microbicidal abilities. The bottom part of the picture shows a rainbow trout lymphocyte in the process of ingesting three latex beads. The cell on the right is a granulocyte containing multiple ingested beads.

19th Annual Immunology Retreat
Friday to Sunday, November 17-19, 2006
Willow Valley Resort and Conference Center
2416 Willow Street Pike Lancaster, PA 17602-4898

Friday, November 17, 2006

Please note: you will not be able to check into your hotel room until after 3pm. We recommend leaving your luggage in your vehicle until check-in.

- | | |
|------------------|--|
| 12-1:20 | Lunch, Terrace Dining Room |
| 1:20:1:30 | Welcome, Statesman Hall A/B
Steve Reiner, IGG Chair |
| 1:30-3:30 | Session I, Statesman Hall A/B
Session Chair: Valerie Zediak |
| 1:30-1:55 | Andrea Carpenter, Bassing Lab
“RAG access as a mechanism of allelic exclusion in the TCR beta locus” |
| 1:55-2:20 | Valerie Zediak, Bhandoola Lab
“Reduced T cell potential of bone marrow hematopoietic progenitors with age” |
| 2:20-2:45 | Stanley Adoro, Singer Lab
“Low frequency of lineage decision errors during development of major histocompatibility complex (MHC) Class II-restricted thymocytes ” |
| 2:45-3:05 | Break |
| 3:05-3:30 | Justin Taylor, Pearce Lab
“Th2 cell exhaustion during chronic helminth infection” |
| 3:30-3:55 | Haina Shin, Wherry Lab
“Specific peptide and rapid proliferation maintain virus-specific CD8 T cells during chronic infection” |
| 3:55-4:20 | Sara Colpitts, Scott Lab
“Differences in IL-7R expression on antigen-specific CD4 and CD8 T cells following Leishmania major infection: implications for the development of memory T cells” |
| 4-6 pm | Registration and Check-in, Main Lobby
<i>Please set up posters for the remainder of the conference in Statesman C/D</i> |
| 5:30-7 pm | Dinner Smorgasbord, Terrace Dining Room |

7-10 pm Session II, Statesman Hall A/B
Session Chair: David Artis

7:00-8:00 pm Keynote Speaker, Ellen Robey, Ph.D.
Professor, Division of Immunology
Department of Molecular and Cell Biology
University of California, Berkeley

“Real-time analysis of T cells and thymocytes in situ”

8:00-8:20pm Break

8:20-8:45pm Mary Collins, Ph.D., Vice President, Inflammation Discovery Research
Wyeth Research
"IL22: a Th17 cytokine contributes to chronic inflammation"

8:45-9:10 pm Sara Cherry, Ph.D., Assistant Professor, Department of Microbiology, University of
Pennsylvania School of Medicine
“Identification of innate antiviral immune mechanisms using genomic strategies in
Drosophila”

9:10-9:35 pm Michael Betts, Ph.D., Assistant Professor, Department of Microbiology, University
of Pennsylvania School of Medicine
“Cellular control of HIV- What really matters?”

9:35-10:00 David Artis, Ph.D., Assistant Professor, Pathobiology, University of Pennsylvania
School of Veterinary Medicine
“Understanding immunity and inflammation in the gastrointestinal tract”

10-12 Social, Statesman A/B

Saturday, November 18, 2006

8-9 am Breakfast Smorgasbord, Terrace Dining Room

9-12 am Session III, Statesman Hall A/B
Session Chair: Fred Karnell

9:00-9:25 Jodi Buckler, Turka Lab
“PTEN imposes T cell requirement for CD28 costimulation”

9:25-9:50 Laura Solt, May Lab
“IL-1 induced NF-kappa B activation is NEMO-dependent but does not require
IKKbeta”

- 9:50-10:15 Rahul Pandey, Orange Lab
 “NKp30 ligation induces rapid activation of the canonical NF-kappa B pathway in NK cells”
- 10:15-10:25 Break
- 10:25-10:50 John Chang, Reiner Lab
 “Asymmetric T cell division initiating the immune response”
- 10:50-11:15 Meredith Schaffer, Burkhardt Lab
 “Ezrin has a unique role in lymphoid development and T cell activation”
- 11:15-11:40 Jenni Crowley, Cancro Lab
 “The effects of BCR and FcR colligation on BLyS receptor expression and responsiveness of primary B cells”
- 11:40-12:05 Fred Karnell, Monroe Lab
 “Membrane cholesterol content accounts for developmental differences in surface B cell receptor compartmentalization and signaling”

12-1 pm Deli Lunch, Terrace Dining Room/ “To-Go” boxes available

Free Time to explore Lancaster area

3:30-5:30 pm Poster Session, Statesman Room C/D

5:30-7 pm Dinner Smorgasbord, Terrace Dining Room

7-10 pm Session IV, Statesman Hall A/B
 Session Chair: Alice Hsu

- 7:00-7:25 Eric Allenspach, Laufer Lab
 “Do Langerhans cells shape the CD4 T cell response in vivo?”
- 7:25-7:50 Alice Hsu, Scott Lab
 “Inhibition of dendritic cell function following infection with *Leishmania mexicana*”
- 7:50-8:15 Edward Behrens, Gallucci Lab
 “CR3 ligation delivers a ‘non-danger’ signal to dendritic cells to suppress stimulatory activity”
- 8:15-8:30 Break
- 8:30-8:55 Natasha Corbitt, Weiner Lab
 “Development of a novel engineered HIV Clade C envelope DNA vaccine that enhances diversity and breadth of the elicited cellular response”

- 8:55-9:20 Megan Suhoski, June Lab
“Successful expansion of tumor associated lymphocytes in ovarian cancer with IL-15”
- 9:20-9:45 Jeff Tsai, Lee Lab
“Modulating Tie2 activity to alter tumor vasculature responsiveness to antiangiogenic therapy”
- 9:45-12 pm Party, Statesman Hall A/B/C/D
- 10:30 pm Announcement of Wyeth Award for Best Oral Presentation and GSK Award for Best Poster Presentation

Sunday, November 19, 2006

9-11 am Continental Breakfast, Statesman Hall A/B

REMINDER: Please check out of your room by 11. Please take down your posters

END OF CONFERENCE

SEE YOU SAME TIME NEXT YEAR, AT THE 20TH ANNUAL IMMUNOLOGY GRADUATE GROUP RETREAT at WILLOW VALLEY RESORT AND CONFERENCE CENTER

Abstracts

1. Stanley Adoro, Hyun Park, Batu Erman, Sophia Sarafova, Wilfried Ellmeier, Alfred Singer
“Low Frequency of Lineage Decision Errors During Development of Major Histocompatibility Complex (MHC) Class II-restricted Thymocytes”
2. Eric Allenspach, Terri Laufer
“Do Langerhans cells shape the CD4+ T cell response *in vivo*?”
3. Amy L. Anderson, Arnold I. Levinson, MD
“B Cell Superantigen-induced Immune Complex Lung Inflammation”
4. Chhanda Biswas, Yanping Huang, Erin O. Comiskey, Esteban Carrizosa, Yair Argon, Janis K. Burkhardt
“The actin-regulatory protein HS1 is required for efficient antigen processing by dendritic cells”
5. Robert A. Barnitz, Michael J. Lenardo
“PKA Phosphorylation Activates HIV-1 Vpr Cell Cycle Arrest”
6. Samik Basu, James L. Riley
“The role of Pim 2 Kinase in Regulatory T Cell function”
7. Edward M Behrens, Uma Sriram, Debra K Shivers, Stefania Gallucci
“CR3 Ligation Delivers a "Non-Danger" Signal to Dendritic Cells to Suppress Stimulatory Activity”
8. Jodi L. Buckler, Patrick T. Walsh, Laurence A. Turka
“PTEN imposes T cell requirement for CD28 costimulation”
9. Thi Bui, Rusty Jones, Craig Thompson
“Impairment of ROS production during T cell activation inhibits proliferation but not cell growth”
10. S.K. Bynum, E.H. Wilson, S. Shapira, D. Artis, C.A. Hunter
“The role of the p50 subunit of NF-Kappa B in the control of toxoplasmosis”
11. Carmine Carpenito, Michael C. Milone, Richard G. Carroll, Steven M. Albelda, James L. Riley, Gwenn-aël Danet-Desnoyers, Carl H. June
“Immunogene therapy of mesothelin expressing tumors using T-body transduced T cells”
12. Andrea C. Carpenter, Craig Bassing
“RAG access as a mechanism of allelic exclusion in the TCR β locus”
13. Erica L. Carpenter, Robert H. Vonderheide
“Cellular and humoral responses to the onco-neuronal protein cdr2 in the absence of paraneoplastic cerebellar degeneration in patients with ovarian cancer”
14. Esteban Carrizosa, Peimin Zhu, Bruce D. Freedman, Janis K. Burkhardt
“HS1 facilitates T cell activation by stabilizing signaling molecules at the immune synapse”
15. Vikram R. Palanivel, John T. Chang, Steven L. Reiner
“Asymmetric T cell division initiating the immune response”