

Interventional Pulmonology

Its Key Role in Diagnosing and Managing Lung Cancer and Pulmonary Nodules

Kevin Ma, MD

Assistant Professor of Clinical Medicine

Section of Interventional Pulmonology and Thoracic Oncology

Division of Pulmonary, Allergy, and Critical Care

University of Pennsylvania

09/13/2019



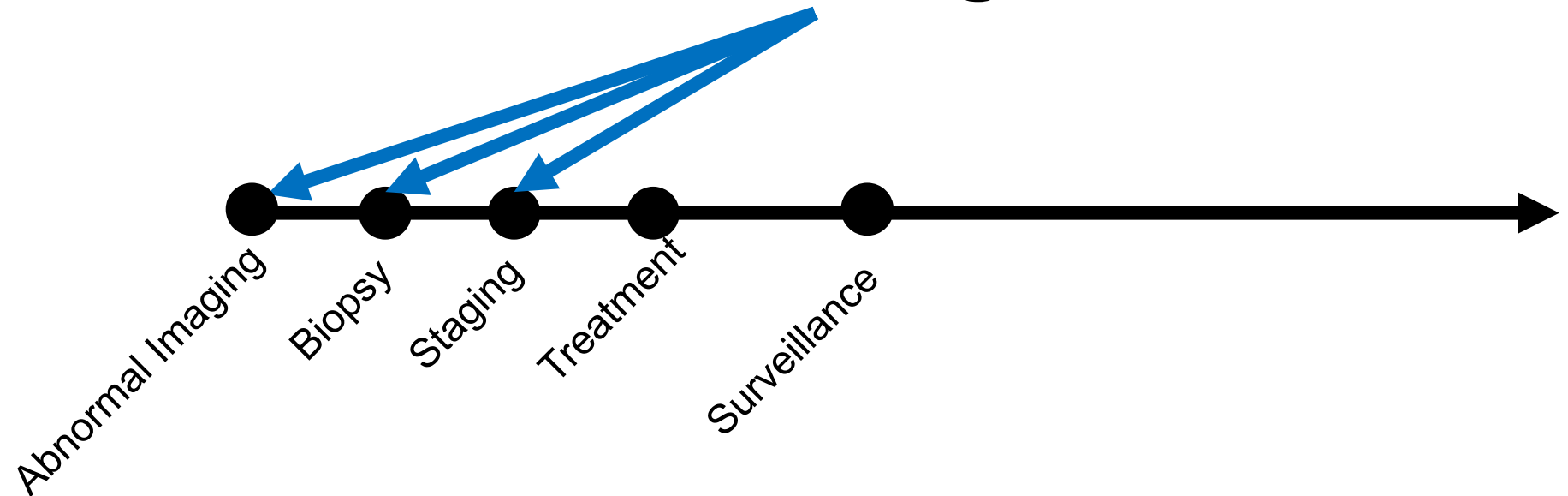
Penn Medicine

No financial disclosures or conflicts

Interventional Pulmonology is a subspecialty of pulmonology

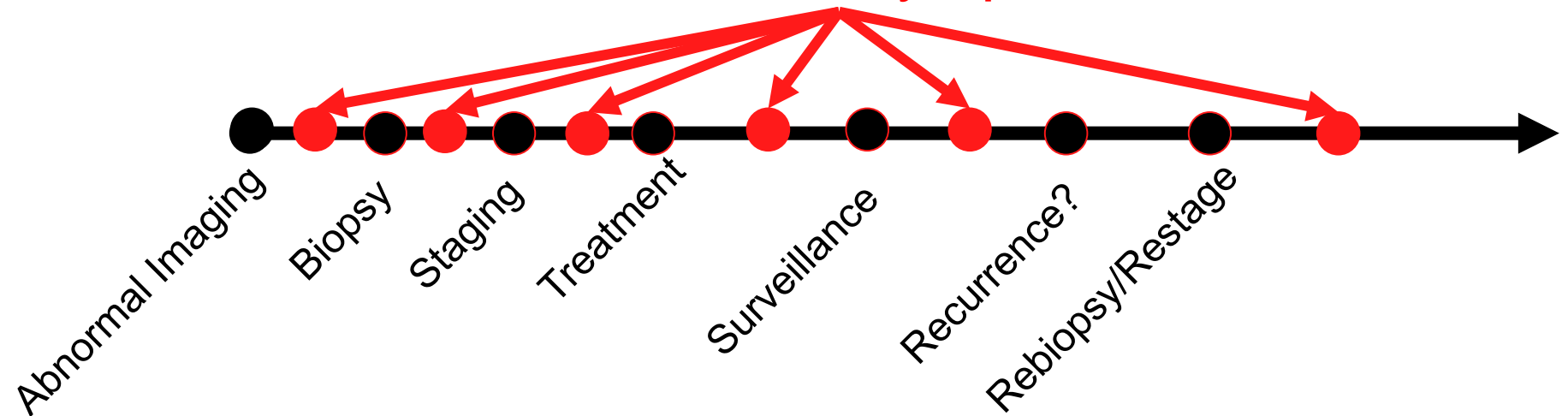
- ◆ **Trained in pulmonology (lung medicine) and critical care (ICU medicine)**
- ◆ **Additional focused in procedures with a emphasis in cancer patients**

Interventional Pulmonologist



Interventional Pulmonologist

Palliation of symptoms



“There’s a nodule in your lungs and I want you to see someone”

◆ **First referrals from**

- Family physicians
- Emergency room discharges
- Other pulmonologists
- Other physicians

Goals of a first time visit with us

- ◆ **What have you been told and what questions do you have?**

- ◆ **What do I think this lesion could be and how can we be more sure**

Most lung nodules are NOT malignant

- ◆ **“Watchful Waiting” vs Biopsy**
 - Shared decision making

Bronchoscopy is a camera procedure similar to an endoscopy or colonoscopy

- ◆ **Safe, fast, effective**
- ◆ **Help diagnose and stage**
- ◆ **Guides treatment options**

After results return

◆ Discussion of results

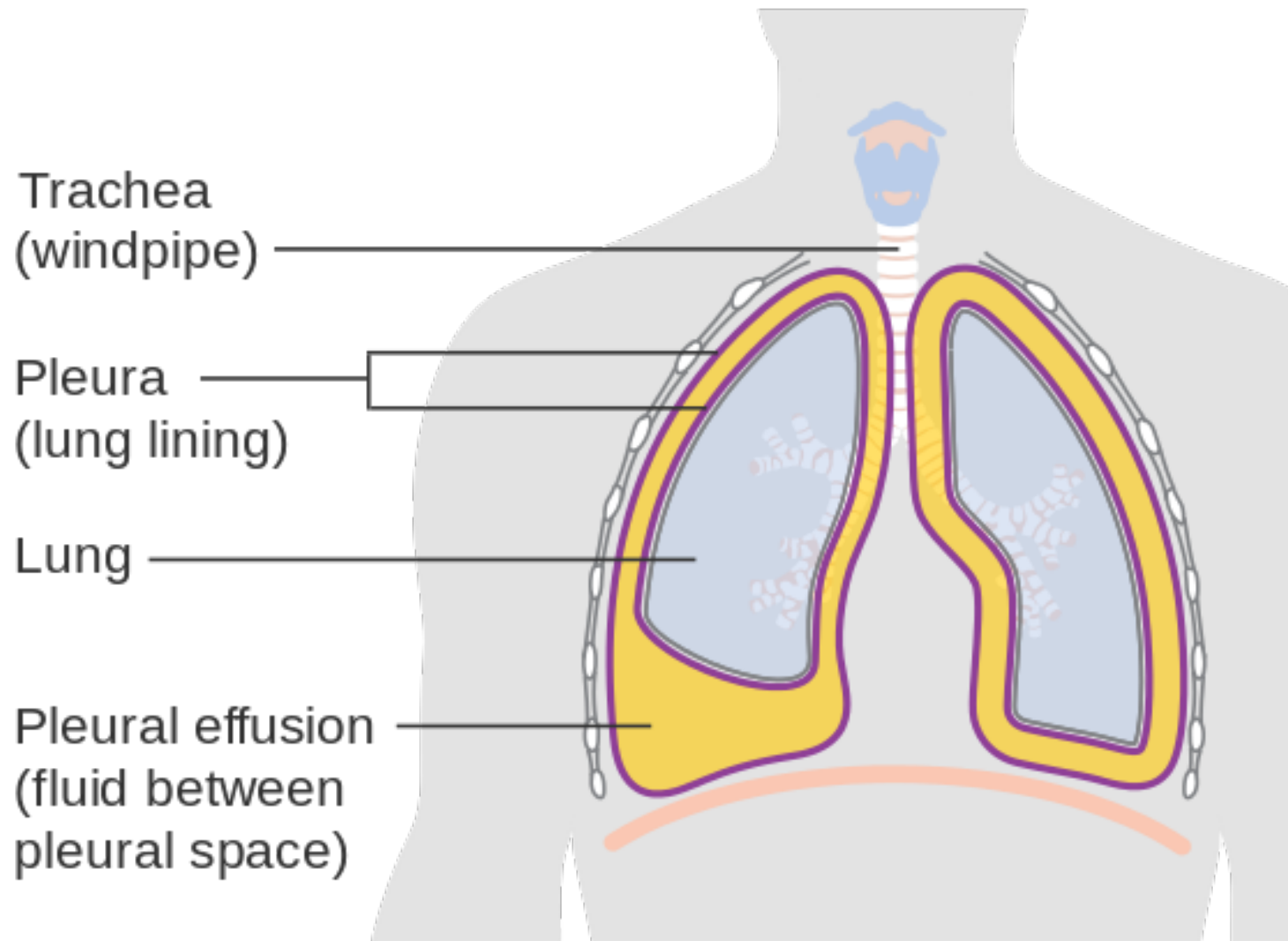
- Diagnosis
- Stage
- Next steps?

◆ Coordination of care

- Additional scans
- Surgery
- Radiation Oncology
- Oncology

Bronchoscopy can help relieve breathlessness due to tumor within the airways

We can also help manage fluid build up around the lung



We help manage complications of lung cancer treatment

- ◆ **Lung injury and scarring from radiation**
- ◆ **Lung injury from chemotherapy**
- ◆ **Infections**
- ◆ **Management of other lung diseases**
 - COPD
 - Asthma

Thank You