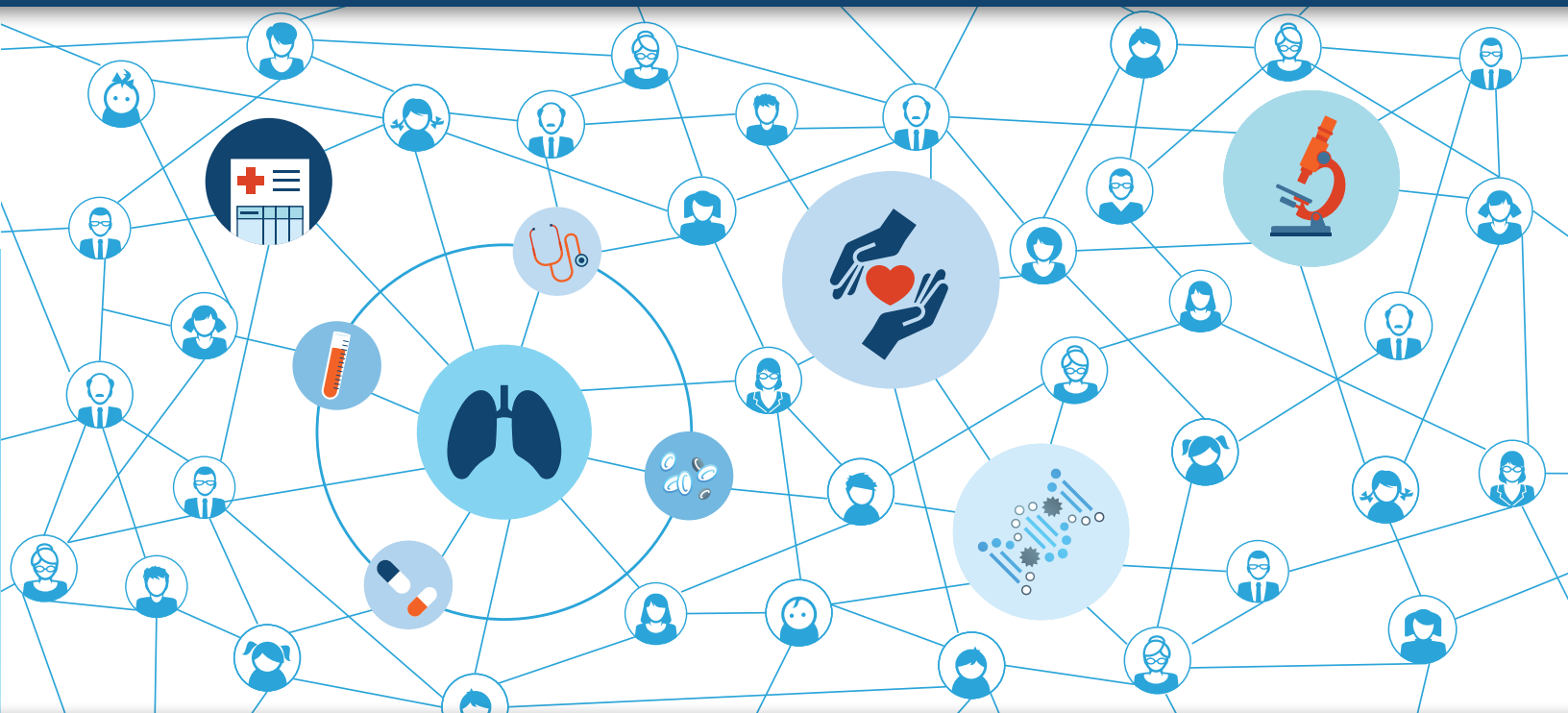




Penn Medicine  
Abramson Cancer Center

# 11<sup>TH</sup> ANNUAL **FOCUS ON** LUNG CANCER

**NON-SMALL CELL & SMALL-CELL LUNG CANCER**  
*in collaboration with the Lung Cancer Research Foundation*



**FREE EDUCATIONAL PROGRAM**

**Friday, September 13, 2019**  
**7:30 am – 3:00 pm**

▶ **Attend in Person or View Livestream**  
**[PennMedicine.org/Abramson/Lung2019](http://PennMedicine.org/Abramson/Lung2019)**

**OPEN TO THE PUBLIC**

Hilton Philadelphia City Avenue // 4200 City Avenue // Philadelphia, PA 19131

# AGENDA - FRIDAY, SEPTEMBER 13, 2019

**7:30 am** Check In  
Continental Breakfast, Visit Exhibits and Experts

## ASK THE EXPERTS: SURVIVORSHIP AND INTEGRATIVE THERAPIES

**Clinical Trials** – Beauty Averion, BS, RN  
**Coping with Emotions** – Joyce Mitchell, MSW, LSW, MBA  
**Giving Back** – Aiyana Pellegrino  
**Good Shepherd Penn Partners** – Eileen Britton  
**Home Care** – Marie C. Osborne BA, MS  
**Managing Physical Symptoms** – Susan Stonehouse-Lee, CRNP, MSN  
**Managing Physical Symptoms from Radiation Therapy**  
– Clara Hilton, BSN, RN  
**Nutrition** – Carly Roop, MA, RD, CSO  
**OncoLink.com** – Marisa Healy, BSN, RN  
Christina Bach, MBE, LCSW, OSW-C  
**Patient Navigator** – Megan Roy, BSN, RN, OCN, RN-BC

## WELCOME AND OPENING REMARKS

**8:15 am** Opening Remarks  
Corey J. Langer, MD | Conference Chair  
Joseph R. Carver, MD | Chief of Staff

### NEWS

**From The Lung Cancer Research Foundation**  
Dennis P. Chillemi | Executive Director  
**From Penn's Abramson Cancer Center**  
Aiyana Pellegrino | Associate Director of Development

## GENERAL SESSION:

**8:40 am** TELL YOUR CANCER STORY, IT'S IMPORTANT:  
Providing hope and inspiration-a panel of cancer patients and their loved ones share their stories

**9:15 am** KEYNOTE: Integrative Therapies for Lung Cancer  
Jun J. Mao, MD, MSCE | Chief, Integrative Medicine Service | Memorial Sloan Kettering Cancer Center

**9:45 am** What Are My Scan Results?  
Coping with Uncertainty  
Andrew R. Haas, MD, PhD | Interventional Pulmonology

**10:15 am** Interventional Pulmonology: Its Key Role in Diagnosing and Managing Lung Cancer and Pulmonary Nodules  
Kevin C. Ma, MD | Interventional Pulmonology

**10:25 am** Surgical Advances for Lung Cancer: TumorGlow®  
Colleen B. Gaughan, MD | Thoracic Surgery

**10:45 am** Break

**10:55 am** Radiation Therapy: The Promise of Proton and Stereotactic Radiation for Lung Cancer  
Steven J. Feigenberg, MD | Radiation Oncology

## SPECIAL PRESENTATION: NEW DISCOVERIES AND TREATMENTS IN SYSTEMIC THERAPY FOR LUNG CANCER

**11:15 am** Joshua M. Bauml, MD | Hematology/Oncology  
**11:40 am** Charu Aggarwal, MD, MPH | Hematology/Oncology  
**12:10 pm** Q&A Panel of Experts  
MODERATORS:  
Corey J. Langer, MD  
Steven J. Feigenberg, MD  
PANEL:  
Charu Aggarwal, MD, MPH  
Joshua M. Bauml, MD  
Et-Tsu Chen, MD  
Colleen B. Gaughan, MD  
Andrew R. Haas, MD, PhD  
Kevin C. Ma, MD  
Kyle W. Robinson, MD  
**1:00 pm** Lunch

## TOWN HALL: LIVING WELL

**1:30 pm** MODERATORS:  
Corey J. Langer, MD  
Steven J. Feigenberg, MD  
PANEL:  
Beauty Averion, BS, RN | Clinical Trials Nurse  
Clara Hilton, BSN, RN | Radiation Oncology Nurse  
Joyce Mitchell, MSW, LSW, MBA | Social Worker  
Carly Roop, MA, RD, CSO | Dietitian  
Megan Roy, BSN, RN, OCN, RN-BC | Oncology Nurse Navigator  
Susan Stonehouse-Lee, CRNP, MSN | Oncology Nurse Practitioner  
**3:00 pm** Closing



# 11<sup>TH</sup> ANNUAL **FOCUS ON LUNG CANCER**

## **NON-SMALL CELL & SMALL-CELL LUNG CANCER**

*in collaboration with the Lung Cancer Research Foundation*

### FRIDAY, SEPTEMBER 13, 2019

#### **TIME**

7:30 am – 3:00 pm

#### **LOCATION**

Hilton Philadelphia  
City Avenue  
4200 City Avenue  
Philadelphia, PA 19131

**Free Parking,  
Breakfast & Lunch!**

*Parking will be validated.*

#### ▶ **WHO SHOULD ATTEND**

- Those at risk, newly diagnosed, currently in treatment or survivor of non-small cell and small-cell lung cancer
- Family member, caregiver or a healthcare professional

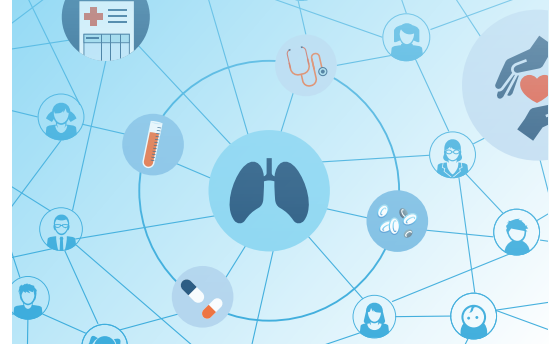
#### ▶ **REGISTRATION**

To register or for more information, call **800.789.PENN (7366)** or visit **[PennMedicine.org/Abramson/Lung2019](http://PennMedicine.org/Abramson/Lung2019)**.

\$25 suggested donation (non-tax deductible) to support the Focus on Lung Cancer Conference. Credit cards accepted with on-line registration. Cash, check, money order or credit card accepted the day of the conference.

#### ▶ **VENUE**

For directions to the Hilton Hotel, call **215.879.4000**. If you need overnight accommodations call **215.879.3399**.



### **CONFERENCE CO-CHAIRS**

#### **CONFERENCE CHAIR**

**Corey J. Langer, MD**

Professor, Medicine  
(Hematology/Oncology)  
Director, Thoracic Oncology

#### **CONFERENCE CO-CHAIRS**

**Steven J. Feigenberg, MD**

Professor, Radiation Oncology  
Vice Chair, Clinical Research  
Chief, Thoracic Radiation Oncology

**Andrew R. Haas, MD, PhD**

Associate Professor, Medicine  
(Interventional Pulmonology)  
Director, Clinical Operations, Section  
of Interventional Pulmonology and  
Thoracic Oncology

**John C. Kucharczuk, MD**

Associate Professor, Surgery  
Chief, Division of Thoracic Surgery

### **FOLLOW US - #LUNGCANCER2019**



PennCancer  
[LungCancerResearchFoundation](http://LungCancerResearchFoundation)



@penncancer  
[@lcrf\\_org](https://twitter.com/lcrf_org)

The Focus on Lung Cancer Conference is being held in collaboration with Penn Medicine Development Office and the Lung Cancer Research Foundation. Attendees will receive communication from Penn Medicine Development Office and the Lung Cancer Research Foundation. Participation in this conference is optional and patient privacy has been maintained. If you would prefer not to receive development materials, we will make reasonable efforts to honor such a request. Please send a written request with your name, and address to Tricia or Christina: Tricia Bruning, Abramson Cancer Center Development Office 3535 Market Street, Suite 750, Philadelphia, PA 19104 | Cristina Chin, Lung Cancer Research Foundation, 155 East 55th Street, Suite 6H, New York, NY 10022.



**Penn Medicine**  
**Abramson Cancer Center**

3600 Civic Center Boulevard  
5th Floor- Suite 500  
Philadelphia, PA 19104

Non-Profit Org.  
U.S. Postage  
**PAID**  
Permit No. 2563  
Phila, PA 19176

# 11<sup>TH</sup> ANNUAL **FOCUS ON** **LUNG CANCER**

**NON-SMALL CELL & SMALL-CELL LUNG CANCER**

*in collaboration with the Lung Cancer Research Foundation*

**FREE EDUCATIONAL PROGRAM**

**Friday, September 13, 2019**

**7:30 am – 3:00 pm**

**NCI** Comprehensive  
Cancer Center

A Cancer Center Designated by the  
National Cancer Institute

