

Penn Acute Research Collaborative (PARC)

**Interdepartmental clinical and translational research
at Penn Presbyterian Medical Center**

**Benjamin S. Abella, MD Mphil
Carrie A. Sims, MD, MS
Joshua Levine, MD**

Clinical research vignette

Sunday, 2 AM: Pt resuscitated from cardiac arrest; transferred to MICU

Post-arrest care bundle initiated

Clinical research team member notified; patient screened remotely and meets enrollment criteria for NHLBI R01 study

Blood draw with sample prep is required within 90 min of arrest to satisfy enrollment
Clinical team busy saving lives

Only family for possible consent - distraught son, unknown power-of-attorney status



R01: Hyperoxia during post-arrest care

Challenges inherent in Acute Care Research (ARC)

A number of major barriers serve to limit ACR:

Logistical:

Clinical events occur 24/7 and without warning; immediate response required

Cost/efficiency:

Full-time staffing for infrequent events cost prohibitive and inefficient

Specialized training:

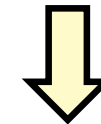
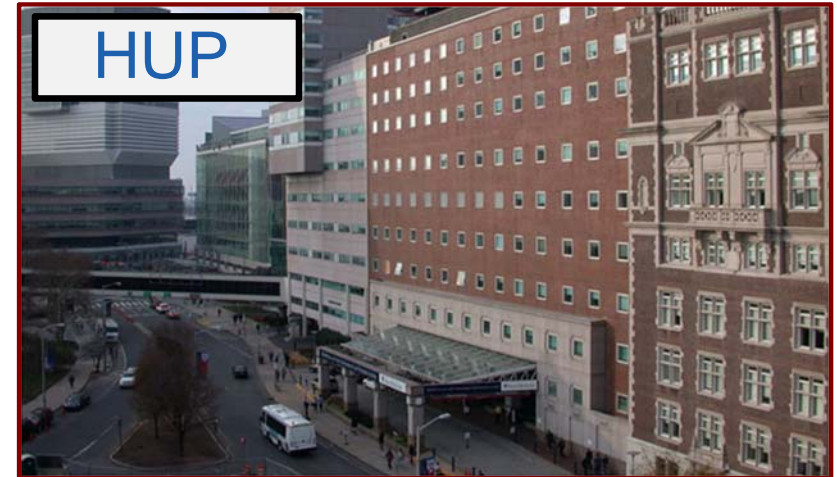
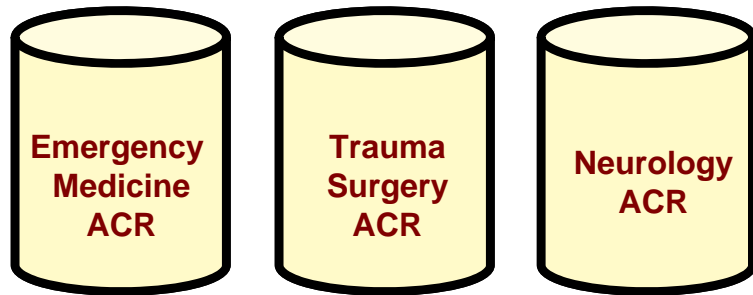
Issues surrounding rapid consent, often by proxy; interactions with clinical team

Coordination:

Infrequent patients often qualify for multiple studies across research silos

Timely opportunity to address this issue

Chance to bridge silo structures
and build new collaborative approach



“Together, We are Stronger”

?

PARC initiative: Specific Aims

Responsive to
Penn Medicine
Strategic Plan
2013-2017



PIONEERING FACULTY

CATALYZING CULTURE

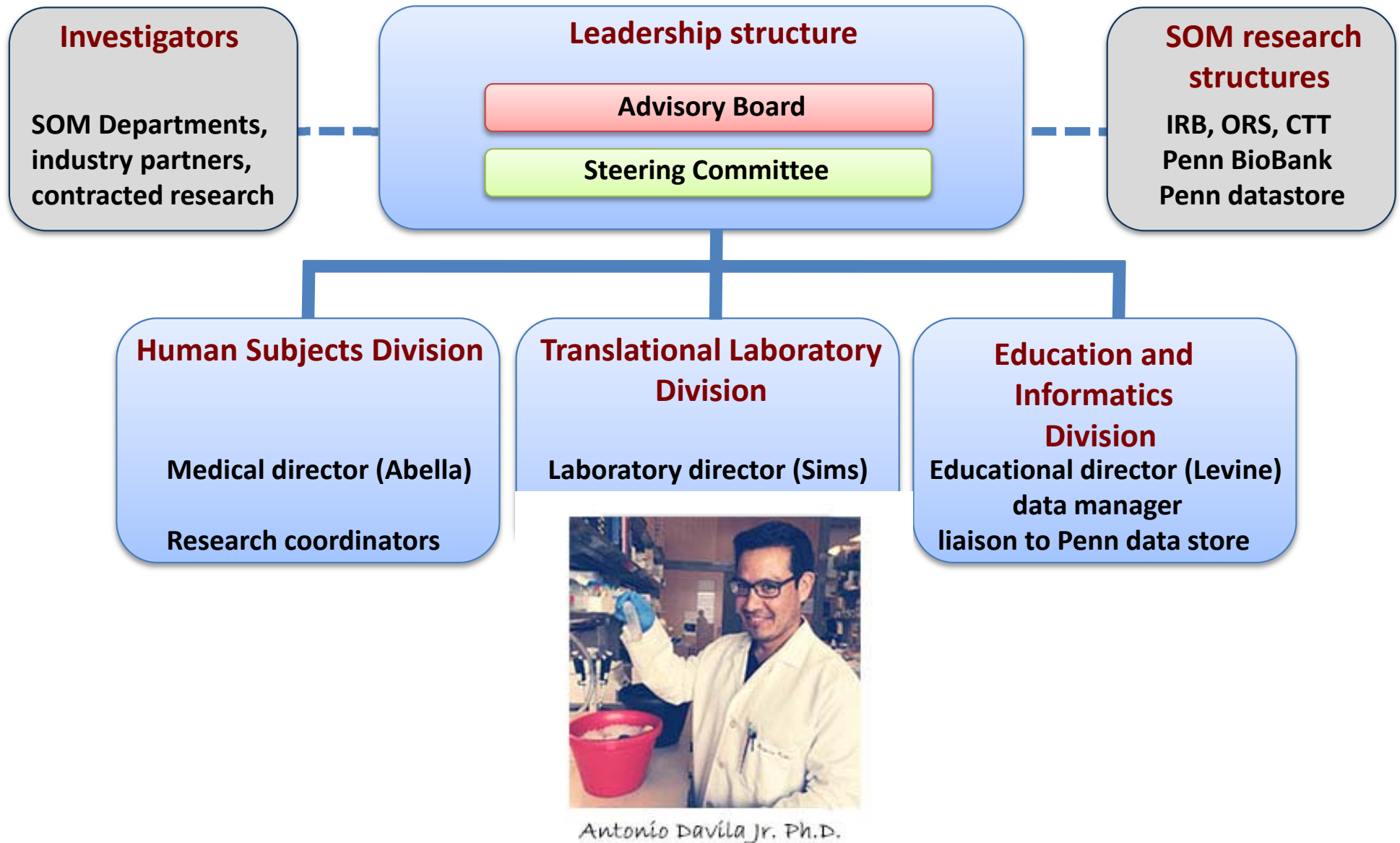
ENABLING SYSTEMS

- Aim 1.** Establish a broad, multidisciplinary faculty group to foster acute care research collaboration and new project proposals.
- Aim 2.** Implement a 24/7 research staff program to support acute care research projects and serve as an attractive infrastructure to support funding proposals to federal and other sources.
- Aim 3.** Develop a collaborative translational laboratory space.
- Aim 4.** Develop collaborative translational projects in order to understand the mechanistic underpinnings of acute care conditions and subsequent pathophysiology.

PARC Multidisciplinary Support

- ◆ **University of Pennsylvania School of Medicine**
- ◆ **Surgery**
- ◆ **Neurosurgery**
- ◆ **Neurology**
- ◆ **Emergency Medicine**
- ◆ **Medicine**
- ◆ **Orthopedics**
- ◆ **Anesthesia**
- ◆ **Physical Medicine and Rehabilitation**

PARC Organization



What can PARC do for you?

- ◆ Research design - clinical and translational
- ◆ Assay consultation and 24/7 lab access
- ◆ Regulatory support
- ◆ ACR 24/7 coverage for screening, enrollment, consent, data collection, sample processing
- ◆ Small grants

