



A Highly Efficient Recombineering-Based Method for Generating Conditional Knockout Mutations

Pentao Liu, Nancy A. Jenkins and Neal G. Copeland

Genome Res. 2003 13: 476-484

Access the most recent version at doi:[10.1101/gr.749203](https://doi.org/10.1101/gr.749203)

References

This article cites 26 articles, 9 of which can be accessed free at:
<http://genome.cshlp.org/content/13/3/476.full.html#ref-list-1>

Article cited in:

<http://genome.cshlp.org/content/13/3/476.full.html#related-urls>

Email alerting service

Receive free email alerts when new articles cite this article - sign up in the box at the top right corner of the article or [click here](#)

To subscribe to *Genome Research* go to:
<http://genome.cshlp.org/subscriptions>

Methods

A Highly Efficient Recombineering-Based Method for Generating Conditional Knockout Mutations

Pentao Liu, Nancy A. Jenkins, and Neal G. Copeland¹

Mouse Cancer Genetics Program, Center for Cancer Research, National Cancer Institute, Frederick, Maryland 21702, USA

Phage-based *Escherichia coli* homologous recombination systems have recently been developed that now make it possible to subclone or modify DNA cloned into plasmids, BACs, or PACs without the need for restriction enzymes or DNA ligases. This new form of chromosome engineering, termed recombineering, has many different uses for functional genomic studies. Here we describe a new recombineering-based method for generating conditional mouse knockout (cko) mutations. This method uses homologous recombination mediated by the λ phage Red proteins, to subclone DNA from BACs into high-copy plasmids by gap repair, and together with Cre or Flpe recombinases, to introduce *loxP* or *FRT* sites into the subcloned DNA. Unlike other methods that use short 45–55-bp regions of homology for recombineering, our method uses much longer regions of homology. We also make use of several new *E. coli* strains, in which the proteins required for recombination are expressed from a defective temperature-sensitive λ prophage, and the Cre or Flpe recombinases from an arabinose-inducible promoter. We also describe two new *Neo* selection cassettes that work well in both *E. coli* and mouse ES cells. Our method is fast, efficient, and reliable and makes it possible to generate cko-targeting vectors in less than 2 wk. This method should also facilitate the generation of knock-in mutations and transgene constructs, as well as expedite the analysis of regulatory elements and functional domains in or near genes.

The ability to introduce virtually any mutation into the mouse genome following gene targeting in mouse embryonic stem (ES) cells provides a powerful approach for elucidating gene function in the whole animal. In many cases, however, the complete deficiency of a gene leads to embryonic lethality, precluding the analysis of gene function in later developmental stages or in the adult. This problem can be overcome by making conditional knockout mice (cko mice), which allows a gene to be inactivated in a tissue- or temporal-specific fashion (Nagy 2000). Typically, a cko allele is made by inserting *loxP* sites into two introns of a gene or at the opposite ends of a gene. Expression of Cre recombinase in mice carrying the cko allele catalyzes recombination between the *loxP* sites and inactivates the gene. By expressing Cre recombinase from a tissue-specific promoter, the gene can be inactivated in a cell-type-specific fashion. The timing of Cre expression can also be controlled using inducible Cre expression systems (Hayashi and McMahon 2002) or viral delivery systems such as adenovirus or lentivirus (Shibata et al. 1997; Pfeifer et al. 2001), which makes it possible to inactivate a gene in a temporal-specific fashion.

A major limitation for generating cko mice is the difficulty and time it takes to make a cko-targeting vector. The conventional approach is to find appropriate restriction enzyme sites that are located in or near the gene. These sites are then used to ligate together *loxP* sites and various other DNA fragments such as homology arms, a positive selection marker such as *PGKNeo*, and a negative selection marker such as *MC1TK*. The problem with this approach is that restriction sites are not always located in convenient places, and this can severely limit where *loxP* sites are placed. A newer and much simpler approach makes use of homologous recombination to

construct the targeting vector. This new form of chromosome engineering, termed recombineering (Copeland et al. 2001; Muyrers et al. 2001), makes it possible to introduce *loxP* sites and selectable markers anywhere in a gene, and greatly shortens the time it takes to make a targeting vector. Originally, recombineering was done in yeast (Baudin et al. 1993). However, during the past couple of years, it has also become possible to perform recombineering in *Escherichia coli*. Bacteria offer a number of advantages over yeast for recombineering. For example, manipulating recombinant DNA produced in yeast is laborious and the recombinant DNA usually has to be transferred to *E. coli* for subsequent manipulation. On the other hand, recombinant DNA produced in *E. coli* can be used directly, eliminating the need for DNA transfer.

Efficient homologous recombination in *E. coli* is made possible by the use of phage-encoded proteins, such as those encoded by the *Red* genes of bacteriophage λ , which permits linear double-strand DNA (dsDNA) fragments (i.e., those carrying *loxP* sites and selection markers) to be inserted into DNA cloned on plasmids, BACs, or PACs via homologous recombination (Zhang et al. 1998; Muyrers et al. 1999; Datsenko and Wanner 2000; Murphy et al. 2000; Yu et al. 2000; Lee et al. 2001; Swaminathan et al. 2001). Only two *Red* genes are required for the recombination: *exo*, which encodes a 5'–3' exonuclease (Exo) that acts on the 5' ends of the linear dsDNA fragment to produce 3' single-strand DNA (ssDNA) overhangs, and *bet*, which encodes a pairing protein (Beta) that binds to the 3' ssDNA overhangs created by Exo and promotes annealing to its complementary DNA strand on the cloned DNA (Stahl 1998; Poteete 2001). The recombination functions of Exo and Beta are further assisted by λ -encoded Gam protein, which inhibits the RecBCD exonuclease activity of *E. coli*. Unlike in yeast, linear dsDNA is unstable in *E. coli* because of the activity of RecBCD. The λ recombination functions can be expressed from a plasmid (Zhang et al. 1998; Murphy et al. 2000), or from a defective prophage integrated into the *E. coli*

¹Corresponding author.

E-MAIL copeland@ncifcrf.gov; FAX (301) 846-6666.

Article and publication are at <http://www.genome.org/cgi/doi/10.1101/gr.749203>.

chromosome (Yu et al. 2000; Lee et al. 2001). In the defective prophage expression system, the recombination genes are expressed from the strong λP_L promoter, which itself is under the control of the temperature-sensitive $\lambda cI857$ repressor. At 32°C, expression of *exo*, *bet*, and *gam* is undetectable. However, by shifting the culture temperature to 42°C for as little as 10–15 min, expression of *exo*, *bet*, and *gam* can be induced to very high levels.

Here, we describe a fast, efficient, and highly reproducible method for constructing cko-targeting vectors using *E. coli* recombinering, and demonstrate the utility of this method by using it to make a cko-targeting vector for *Evi9*. *Evi9* encodes a zinc finger transcription factor that is mutated in mouse and human hematopoietic tumors (Nakamura et al. 2000; Satterwhite et al. 2001). The ability to rapidly produce cko-knockout targeting vectors should greatly facilitate studies of gene function in the post-genome era.

RESULTS

Conditional knockout (cko) targeting vectors can be made by using recombinering to introduce *loxP* sites, and positive and negative selection markers, into BAC DNA by homologous recombination. The region of the BAC containing the *loxP* sites and positive and negative selection markers is then excised from the BAC and transformed into ES cells. The introduction of *loxP* sites into BACs is complicated, however, because most BAC vector backbones carry *lox* sites. These sites must be removed before any further *lox* sites are introduced into the BAC DNA. Additionally, BAC integrity needs to be examined after each modification, and this is difficult when the BAC inserts are large. By subcloning a 10–15-kb fragment of BAC DNA into a high-copy plasmid vector such as pBluescript (pSK⁺) before the *lox* sites are introduced, these problems can be eliminated.

Subcloning DNA Via GAP Repair

Homologous recombination via a process known as gap repair provides a convenient method for subcloning DNA from BACs into pBluescript. The gap repair method used previously for subcloning BAC DNA is shown in Figure 1. Here, the linearized pBluescript vector used for gap repair is generated by PCR amplification using two chimeric primers (Zhang et al. 2000; Lee et al. 2001). The 5' 50 nt of each primer is homologous to the two ends of the BAC sequence to be subcloned, whereas the 3' 20 nt of each primer is homologous to pBluescript DNA. The linearized, PCR-amplified pBluescript vector is electroporated into *E. coli* cells induced for *exo*, *bet*, and *gam* expression, and which carry the BAC. Homologous recombination between the BAC DNA and the linearized pBluescript vector generates a circular plasmid that can replicate in *E. coli*. Ampicillin resistance (Amp^r) can be used to select these circular products (Fig. 1).

To make subcloning by GAP repair possible, a BAC must be first transferred from its strain of origin (DH10B) into an *E. coli* strain that contains *exo*, *bet*, and *gam*. In our experiments, BACs are transferred into EL350 *E. coli* cells (Lee et al. 2001). We previously made EL350 cells by constructing a defective λ prophage in DH10B cells, to create DY380 cells (Lee et al. 2001), because DH10B is one of the few *E. coli* strains known that can be efficiently transformed with BAC DNA. A *cre* gene under the control of the arabinose-inducible promoter, P_{BAD} , was then introduced into the defective prophage carried in DY380 cells, to produce EL350 cells (Lee et al. 2001). In EL350

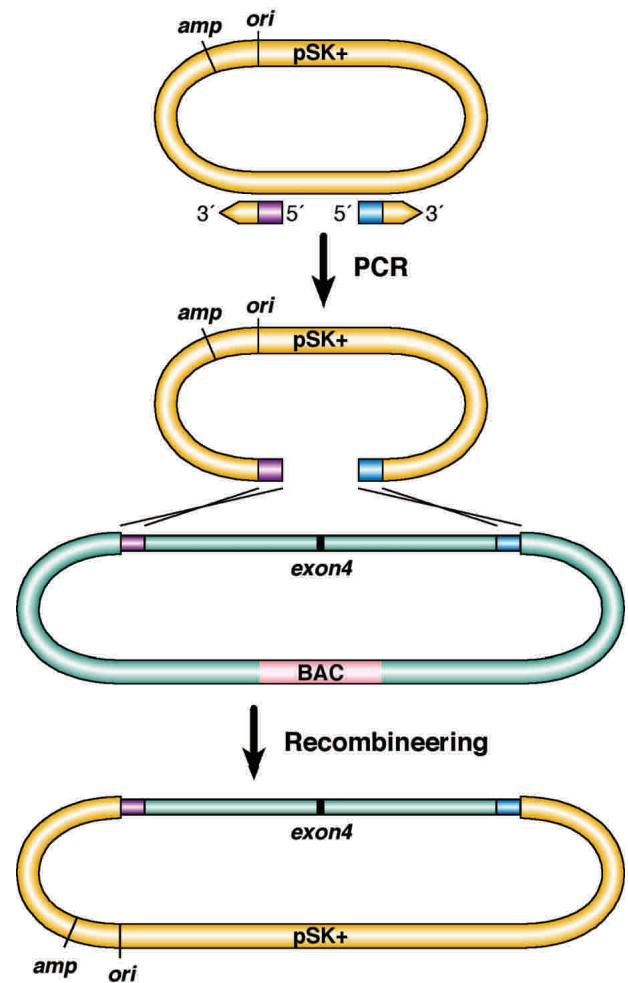


Figure 1 Subcloning a DNA fragment from a BAC into pBluescript (pSK⁺) by gap repair with short homology arms via recombinering. Primers that have 20 bp of homology (yellow arrows) to pBluescript (yellow circle) at their 3' end, and 50 bp (purple or blue) of homology at their 5' ends to one of two ends of the BAC DNA to be subcloned (light blue), are used to amplify pBluescript. The PCR-amplified, linearized pBluescript containing the two homology arms is then transformed into recombination-competent cells that carry the BAC (BAC backbone in pink color). Gap-repaired plasmids are selected by their ampicillin resistance. The black bar denotes the location of *Evi9* exon 4.

cells, the homologous recombination functions encoded by the *red* genes can be controlled by temperature, whereas the *cre* gene can be controlled by arabinose. We have also found that it is much easier to transform electro-competent EL350 or DY380 cells produced from overnight cultures, than from exponentially growing cells. When BAC DNA is electroporated into stationary electro-competent cells and the BAC-containing cells are selected using the chloramphenicol resistance (Cam^r) gene that is carried in the BAC vector backbone, we routinely obtain 100 to 1000 Cam^r colonies from 50 ng of BAC DNA, and virtually all of the colonies contain unrearranged BACs (data not shown). A complete list of the reagents used in these studies can be found in Table 1.

When we used the gap repair method that uses short homology (50 bp) to subclone an 11.0-kb fragment of *Evi9*

Table 1. Recombineering Reagents

Strains	Genotype
DH10B	F ⁻ <i>mcrA</i> Δ(<i>mrr-hsdRMS-mcrBC</i>) Ø80 <i>dlacZ</i> Δ <i>M15</i> Δ <i>lacX74</i> <i>deoR</i> <i>recA1</i> <i>endA1</i> <i>araD139</i> Δ(<i>ara, leu</i>)7649 <i>ga/U ga/K</i> <i>rspl nupG</i>
DY380	DH10B [λ <i>cl857</i> (<i>cro-bioA</i> < > <i>tet</i>)]
EL250	DH10B [λ <i>cl857</i> (<i>cro-bioA</i> < > <i>araC-P_{BAD}flpe</i>)]
EL350	DH10B [λ <i>cl857</i> (<i>cro-bioA</i> < > <i>araC-P_{BAD}cre</i>)]
Selection cassettes	
PL451	<i>FRT-PGK-EM7-NeobpA-FRT-loxP</i>
PL452	<i>loxP-PGK-EM7-NeobpA-loxP</i>
Other plasmids	
pSK ⁺	pBluescript
PL253	Modified <i>MC1TK</i>

spanning exon 4, we found that we were unable to obtain consistent results (data now shown). Besides a low retrieving efficiency, aberrant products were frequently obtained. Successful retrieval experiments have been reported using short homology (Zhang et al. 2000; Lee et al. 2001); therefore, our failure may be caused, in part, by the nature of the homologous sequences in our experiment. Short regions of homology, such as those used here, might have similar sequences in other regions of the BAC, and this could lead to the generation of unwanted products. Moreover, the GC content of short homology regions can influence homologous recombination as reported in yeast (Gray and Honigberg 2001). Alternatively, even though Gam is expressed and inhibits RecBCD, inhibition is likely to be incomplete, and this residual activity, or alternatively, the exonuclease activity of RecQ and RecJ, could degrade these short homology regions and make the recombination inefficient (Courcelle and Hanawalt 1999).

Because of these difficulties, we turned to an alternative method for generating gap-repaired plasmids that makes use of longer homology arms (200–500 bp; Fig. 2). As shown below, these larger homology arms significantly increase the frequency of subcloning by gap repair, and because of this, unwanted recombination products were rare. Another advantage of this alternative method is that the gap repair plasmid is not PCR-amplified, which eliminates potential artifacts introduced into the plasmid by PCR. In this alternative method, two sets of PCR primers were produced and used to amplify two 200–500-bp regions of the BAC (primers A and B and Y and Z; Fig. 2). Ultimately these two regions will mark the ends of the fragment to be subcloned by gap repair. The PCR products were purified using spin columns and digested with either *NotI* and *HindIII* or *HindIII* and *SpeI*. Restriction sites for these enzymes were included in the amplification primers to permit directional cloning of the PCR products into pBluescript. The digested fragments were again purified and ligated to *NotI*- and *SpeI*-cut pBluescript DNA that also has a *TK* (*MC1TK*) gene for use in negative selection in ES cells. The retrieval vector was subsequently linearized with *HindIII* to create a DNA double-strand break for gap repair.

When we electroporated 1 μL (50–100 ng) of the linear gap repair plasmid into electro-competent EL350 cells, which contained *Evi9* BAC A12, and which had been induced for *exo*, *bet*, and *gam* expression by prior growth at 42°C for 15 min (Fig. 2), we found that we were able to routinely generate several thousand Amp^r colonies in a single electroporation

experiment. About 5% of these Amp^r colonies were background colonies derived either from self-ligation of the linearized gap repair plasmid or from uncut DNA (data not shown). The other 95% of the colonies contained gap-repaired plasmids with the expected genomic inserts (Fig. 3B, lane 1).

During the gap repair process, RecBCD is inhibited by Gam so that the linear gap repair plasmid is stable. However, in the absence of RecBCD, ColE1-derivative plasmids such as pBluescript can replicate by rolling circle replication. This type of replication will eventually convert the plasmid monomers into plasmid multimers (Feiss et al. 1982). As a result, huge plasmid complexes are produced in RecBCD-deficient cells. To select against these plasmid multimers following gap repair, a small amount of the gap-repaired plasmid DNA (1 ng) was retransformed into wild-type DH10B cells, and Amp^r colonies were selected. Empirically, we determined that retransformation selects for plasmid monomers and eliminates plasmid multimers.

Targeting the First *loxP* Site Into the Subcloned Plasmid DNA

The next step in creating a cko-targeting vector is the introduction of a *loxP* site into the subcloned DNA: in this case, 5' of *Evi9* exon 4 (Fig. 3A). This is accomplished by introducing a floxed neomycin resistance (*Neo*) cassette (PL452) via homologous recombination into the subcloned plasmid DNA, and by removing the *Neo* gene via Cre recombinase. The floxed *Neo* gene in PL452 is expressed from a hybrid PGK-EM7 promoter. PGK permits efficient *Neo* expression in mammalian cells, whereas EM7 allows *Neo* to be expressed in bacterial cells. Subsequent removal of the floxed *Neo* gene via Cre recombinase leaves behind a single *loxP* site at the targeted locus. To introduce a floxed *Neo* gene at the correct location, it is first flanked with 100–300-bp arms that are homologous to the targeting site. These homology arms, as described above, are generated by PCR amplification of the BAC DNA. In this case, the PCR primer pairs were engineered to contain *NotI* and *EcoRI* (primers C and D) or *BamHI* and *Sall* (primers E and F) restriction sites (Fig. 2). These restriction sites allow for the directional cloning of the homology arms, and the floxed *Neo* gene, into pBluescript. Primer D also contains a *BglIII* site internal to the *EcoRI* site. The *BglIII* site marks the presence of the *loxP* site at the targeted locus following recombination in ES cells (see below). An *EcoRV* site was also incorporated into primer G for 3' side diagnosis of the targeting in ES cells (see below). Following PCR amplification, the products were purified, restriction digested, and ligated to the floxed *Neo* cassette excised from PL452 with *EcoRI* and *BamHI*, and to pBluescript that was linearized by *NotI* and *Sall* digestion (Fig. 2). Four to six colonies selected by their kanamycin resistance, conferred by *Neo*, were picked and checked by restriction enzyme digestion to ensure that they were properly constructed. Usually, all of the Kan^r colonies were properly constructed (data not shown). This plasmid was referred to as the minitargeting vector. The floxed *Neo* gene, together with the homology arms, was excised from pBluescript by *NotI* and *Sall* digestion, and gel-purified. The purified *Neo* cassette (150 ng) was coelectroporated along with the gap-repaired subcloned DNA (PL441, 10 ng) into EL350 cells, which had been induced for Red recombination functions by prior growth at 42°C for 15 min, and frozen at –80°C. Transformants were selected on kanamycin plates.

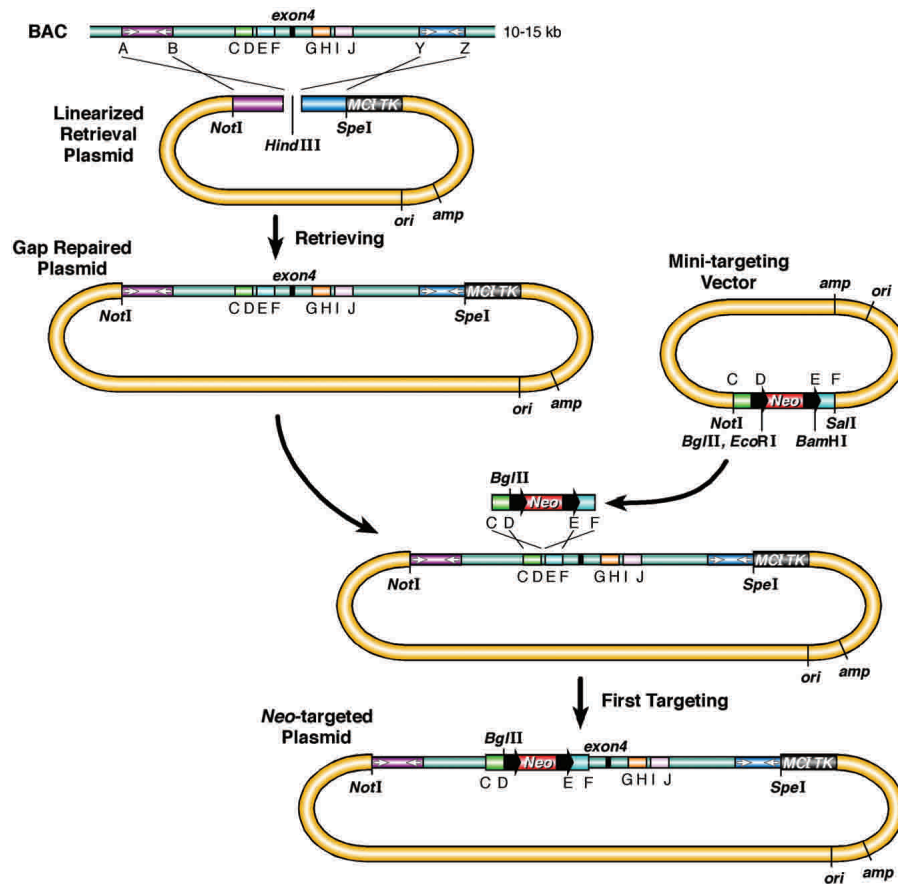


Figure 2 An improved procedure for subcloning DNA from BACs and for constructing cko-targeting vectors. The homology arms used for gap repair (subcloning) and for targeting, are PCR-amplified from BAC DNA. The two homology arms (purple or dark blue), amplified using primers A and B or primers Y and Z, were cloned into an *MC1TK*-containing plasmid, to generate the gap repair (retrieval) plasmid for subcloning. The gap repair plasmid was linearized with *HindIII* to create a DNA double-strand break for gap repair. A minitargeting vector was constructed by ligating together the two PCR products generated by amplification of BAC DNA with primers C and D (light green) or primers E and F (blue), a floxed *Neo* selection cassette (black arrow: *loxP* site), and pBluescript. A *BglII* restriction site was included in the minitargeting vector for diagnosing gene targeting in ES cells. The black arrows denote *loxP* sites. The targeting cassette was excised by *NotI* and *SalI* digestion, or by PCR amplification, using primers C and F. The gap-repaired plasmid and the excised targeting cassette were cotransformed into recombination-competent DY380 or EL350 cells. The recombinants had a floxed *Neo* cassette inserted between primers D and E and can be selected on kanamycin plates. The *Neo* cassette was excised with Cre recombinase, leaving a single *loxP* site at the targeted locus (see Fig. 3). Similarly, a *Neo* selection cassette can be inserted between primers H and I using homology arms amplified by primers G, H (light orange), and I, J (light purple).

In one experiment, 84 Kan^r colonies were obtained following electroporation of induced EL350 cells, whereas only six colonies were obtained from uninduced cells. All of the six colonies were identical to the original minitargeting vector, indicating that they represented uncut plasmid. Plasmids from six of the Kan^r colonies from induced EL350 cells were examined by restriction enzyme digestion to make sure they were the correct recombinants. All six colonies gave the expected restriction patterns (Fig. 3B, lane 2; data not shown).

Not all plasmids in a Kan^r cell will carry the *Neo* cassette. This is especially true for high-copy plasmids such as pBluescript because one recombinant plasmid molecule will render the cell Kan^r. The cells will therefore carry mixtures of targeted and nontargeted plasmids following recombination. This problem can be reduced if only a small amount of the

gap-repaired subcloned plasmid DNA (1 ng) is used for coelectroporation. Alternatively, the mixed plasmids can be retransformed into DH10B cells and grown on kanamycin plates. Because most transformed cells will only receive one plasmid, growth of the transformed cells on kanamycin plates will select against cells that receive nontargeted plasmids, and the surviving colonies will carry pure populations of targeted plasmids.

Excision of the *Neo* cassette from the subcloned DNA was accomplished by electroporating the targeted plasmid DNA into EL350 cells, which had been induced for Cre expression by prior growth in arabinose-containing media for 1 h. The electroporated cells were plated on either ampicillin or kanamycin plates. Cre-mediated recombination is highly efficient; therefore, the kanamycin plates usually do not have any colonies. Colonies from the ampicillin plates were checked for their kanamycin sensitivity and restriction digestion patterns to make sure that the floxed *Neo* cassette was properly excised. All 12 Amp^r colonies picked for analysis in this experiment were kanamycin-sensitive, and contained a single *loxP* site at the targeted locus (Fig. 3B, lane 3; data not shown).

Targeting a Second *loxP* Site Downstream of *Evi9* Exon 4

The final step in the construction of the cko-targeting vector is the introduction of a second *loxP* into the subcloned DNA, in this case, downstream of *Evi9* exon 4 (Fig. 3A). One way to accomplish this task is to again introduce a floxed *Neo* gene into the subcloned DNA, and then remove the floxed *Neo* gene via Cre recombinase, leaving behind a *loxP*

site at the second targeted locus. This is, however, complicated by the fact that the *Neo* gene serves as the selectable marker for gene targeting in ES cells; therefore the *Neo* gene can only be removed after *Neo*-positive ES cells are selected and homologous recombinants are identified. Transient expression of Cre recombinase in ES cells can generate three different excision products: Two recombination products are generated by recombination between the *loxP* site located upstream of *Evi9* exon 4 and the two *loxP* sites located downstream of *Evi9* exon 4 that flank the *Neo* gene. The third, and desired recombination product, results from recombination between the two *loxP* sites located on either side of the *Neo* gene. Invariably, it seems that most recombination products are the undesired ones, and in some cases, it can be difficult to obtain ES cells that contain the desired product. Another

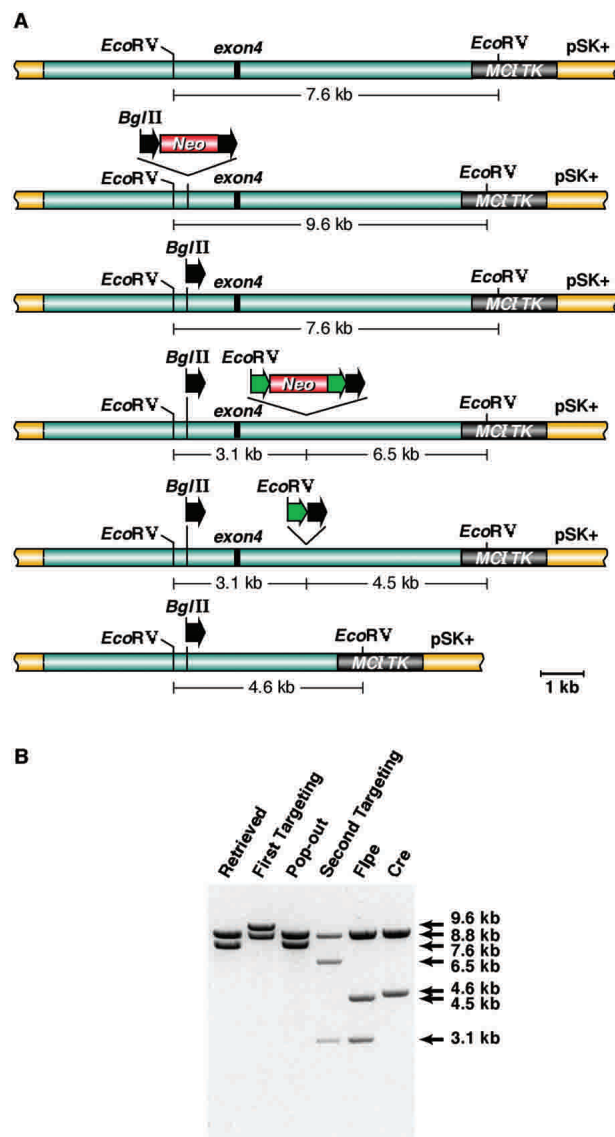


Figure 3 Constructing an *Evi9* conditional knockout allele. (A) The 11.0-kb genomic DNA fragment containing *Evi9* exon 4 was subcloned from BAC-A12 using gap repair. *EcoRV* digestion of the gap-repaired plasmid generates 7.6-kb and 8.8-kb fragments. The 7.6-kb fragment contains *Evi9* exon 4 sequences, whereas the 8.8-kb fragment, common to all lanes, contains plasmid sequences and *Evi9* sequences located upstream of exon 4. The floxed *Neo* cassette of PL452 was targeted upstream of *Evi9* exon 4. In the targeted plasmid, the 7.6-kb *EcoRV* fragment increases in size to 9.6 kb because of the addition of the floxed *Neo* cassette. Excision of the floxed *Neo* cassette leaves behind a single *loxP* (black arrow) at the targeted locus, and the normal *EcoRV* digestion pattern is restored. Next, the PL451 selection cassette, containing the *Neo* gene flanked by *FRT* sites (green arrow) and a downstream *loxP*, was targeted downstream of *Evi9* exon 4. The PL451 selection cassette contains an *EcoRV* site, which results in the production of 6.5-kb and 3.1-kb fragments following *EcoRV* digestion. This is the *Evi9* cko-targeting vector. To test the functionality of the *FRT* sites in the cko-targeting vector, the PL451 selection cassette was excised from the cko-targeting vector by FLP recombinase following electroporation into EL250 cells. This reduces the size of the 6.5-kb *EcoRV* fragment to 4.5 kb. Finally, electroporation of the cko-targeting cassette into EL350 cells expressing Cre recombinase excises the entire DNA between the two *loxP* sites, creating a 4.6-kb *EcoRV* fragment. (B) *EcoRV*-digestion patterns of the plasmids at every stage of the targeting vector construction.

problem stems from the fact that the *Neo* gene in a previously constructed cassette (PGK-Tn5-Kan-bpA) is optimized for expression in *E. coli*. In our hands, we usually obtain 90% less ES colonies when we use this cassette than when we use a conventional PGKNeobpA.

To overcome these problems, we constructed a new selection cassette (PL451). PL451 was constructed by introducing an *FRT* site upstream of *Neo*, and *FRT* and *loxP* sites downstream of *Neo*, in PGKNeobpA, a selection cassette that is commonly used for gene targeting in ES cells (Fig. 3A). Similar to PL452, we introduced a bacterial EM7 promoter in between the PGK promoter and the coding sequence of *Neo*. This selection cassette works efficiently in both *E. coli* and mouse ES cells (data not shown). *FRT* is the DNA recognition site for FLP recombinase. DNA located between two *FRT* sites in mouse ES cells can be excised by transient expression of a genetically enhanced FLP recombinase (Flpe; Buchholz et al. 1998), which works well in ES cells. In this case, single *FRT* and single *loxP* sites were left behind at the targeted locus (Fig. 3A). Only one Flpe recombination product is possible, which ensures that all excision products are the correct ones. Alternatively, the PL451 selection cassette can be removed after the conditional allele is introduced into the mouse germ line by breeding the mice to one of the mouse strains that expresses *Flpe* in the mouse germ line (Rodriguez et al. 2000). Subsequent expression of Cre recombinase will excise the entire DNA between the *loxP* sites located on either side of *Evi9* exon 4, and create an *Evi9* null allele. Cre can be expressed in the mouse germ line to create a germ-line null allele, or in somatic cells.

The PL451 selection cassette was introduced into the subcloned DNA in the same manner used to introduce the floxed *Neo* gene upstream of *Evi9* exon 4. *Evi9* exon 4, including both targeted regions, was sequenced to make sure that no undesired mutations were introduced during the recombination process. To functionally test the *loxP* and *FRT* sites in the targeting vector, the cko-targeting vector plasmid DNA was transformed into arabinose-induced EL350 and EL250 cells (EL250 cells have a *Flpe* gene under the control of the arabinose-inducible promoter, *P_{BAD}*; Lee et al. 2001), respectively. Cells were plated on ampicillin plates to select for the plasmid. Plasmid DNA was prepared and digested to confirm the expected recombination patterns (Fig. 3B, lanes 5,6).

Gene Targeting in ES Cells

The cko-targeting vector was subsequently linearized with *NotI* and electroporated into CJ7 ES cells; the transformants were selected for their G418 and ganciclovir (Ganc) resistance. Homologous recombination can occur either upstream or downstream of the *loxP* site located 5' of *Evi9* exon 4. Because a *BglIII* site was introduced along with the upstream *loxP* site, homologous recombinants carrying this *loxP* site (the cko allele) will generate an 18.1-kb (wild-type) and a 5.5-kb (mutant) *BglIII* fragment using a 5' probe (Fig. 4A). Because we introduced an *EcoRV* site along with the selection cassette to the region downstream of exon 4, targeted clones will also have a 6.3-kb *EcoRV* fragment detected by the 3' probe (Fig. 4A). In one electroporation experiment, 300 G418^r Ganc^r colonies were obtained following electroporation. Of these, 80 colonies were picked for Southern analysis, and 24 out of the 80 colonies (30%) had the *Evi9* cko allele (Fig. 4B).

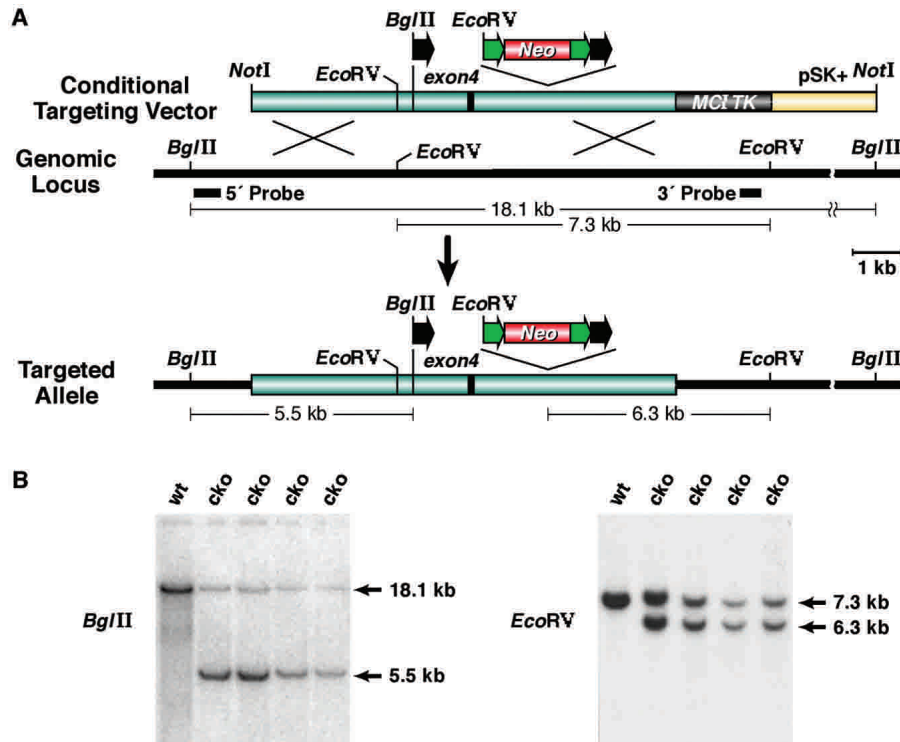


Figure 4 Identification of correctly targeted ES cell clones. (A) Homologous recombination between the *Evi9* cko-targeting vector and the *Evi9* genomic locus. Correctly targeted ES cells (cko allele) have a 5.5-kb *Bgl*II band, in addition to an 18.1-kb wild-type band, following hybridization with the 5' probe. These cko clones also have a 6.3-kb *EcoRV*-targeted band, as well as a 7.3-kb wild-type band, following hybridization with the 3' probe. (B) Southern blot analysis of the ES cell clones. The 5' probe was used in the left panel, and a 3' probe was used in the right panel. (wt) Wild-type ES clones; (cko) conditional knockout ES clones.

DISCUSSION

Here, we describe a rapid and efficient method for generating cko-targeting vectors that relies on *E. coli* recombinering rather than restriction enzymes and DNA ligases for vector construction (Fig. 5). This method makes use of high-copy plasmids rather than BAC DNA to generate the targeting vector, 200–500 bp of homology for subcloning (gap repair), and 100–300 bp of homology for targeting, rather than the 45–50 bp of homology used in previous experiments (Zhang et al. 1998, 2000; Yu et al. 2000; Lee et al. 2001). By using high-copy plasmid DNA for vector construction, the problem caused by *lox* sites present in the BAC vector backbone is eliminated, and by using longer homology arms, as many as 10,000 colonies can be obtained from a single subcloning experiment with only 50–100 ng of retrieving plasmid DNA. In addition, >95% of the colonies are correctly constructed. This is in contrast to previous subcloning experiments using shorter regions of homology in which frequent aberrant recombinants were obtained. Moreover, using these longer homology arms, we can now routinely obtain targeting frequencies as high as 1×10^{-2} with as little as 100 ng of targeting DNA (i.e., targeting a floxed *Neo* cassette to a BAC). Similar greatly increased homologous recombination by elongated homology has been observed previously in yeast (Wach 1996).

To use high-copy plasmids such as pBluescript for vector construction, we had to modify the way we use the λ Red

system. For example, coelectroporation was used to target the floxed *Neo* cassette to the plasmid, instead of introducing the *Neo* cassette into cells that already carried the plasmid. Introduction of the λ Red genes into cells that carry CoLE1 plasmids can cause the formation of plasmid complexes owing to rolling circle replication (Feiss et al. 1982). Cotransformation of the *Neo* cassette and the plasmid minimizes this problem, but still provides a high enough frequency of homologous recombination to generate the targeted plasmid. Cre-expressing EL350 cells were also used to excise the floxed *Neo* cassette from the targeted plasmid. When multiple plasmid molecules containing *loxP* sites are present in a cell expressing Cre, intermolecular recombination can occur, resulting in plasmid loss. Electroporation of a small amount of plasmid DNA containing the floxed *Neo* cassette into Cre-expressing EL350 cells avoids this problem, yet still allows for the efficient excision of the *Neo* cassette. Two new selection cassettes (*loxP*–PGK–EM7–NeobpA–*loxP* and *FRT*–PGK–EM7–NeobpA–*FRT*–*loxP*) were also constructed that worked well in both *E. coli* and mouse ES cells. The second selection cassette contains two *FRT* sites and one *loxP* site that flank the selection cassette. This makes it possible to remove this selection cassette following homologous recombination in ES with Flpe recombinase, leaving behind *FRT*–*loxP* sites at the targeted locus.

When using the λ Red system with short homology, primers and homology arms must be chosen with care. If one of the homology arms has significant sequence identity to another region of the BAC or plasmid, recombination is severely affected. For example, when using 45-bp homology arms, 5 bp of identical sequence between two homology arms is all that is needed to cause serious problems (Zhang et al. 2000). Longer homology arms avoid this problem. We have used 200–500-bp homology arms that contain SINE, LINE, or short DNA repeats such as CA repeats for retrieving and targeting. Efficient recombination was still achieved in all cases (data not shown). Additionally, longer homology arms can help in avoiding problems created by sequencing errors in the public databases, or strain polymorphisms. This will be especially important when modifying human DNA, where polymorphisms are much more common. With its high efficiency and reliability, more than 10 cko-targeting vectors have been constructed in our laboratory using this new method. Four of the cko-targeting vectors have been introduced into ES cells for homologous recombination. All four targeting constructs gave rise to highly efficient gene targeting frequencies in mouse ES cells: The frequency of cko alleles ranged from 20%–40% of the G418^r Ganc^c colonies (data not shown).

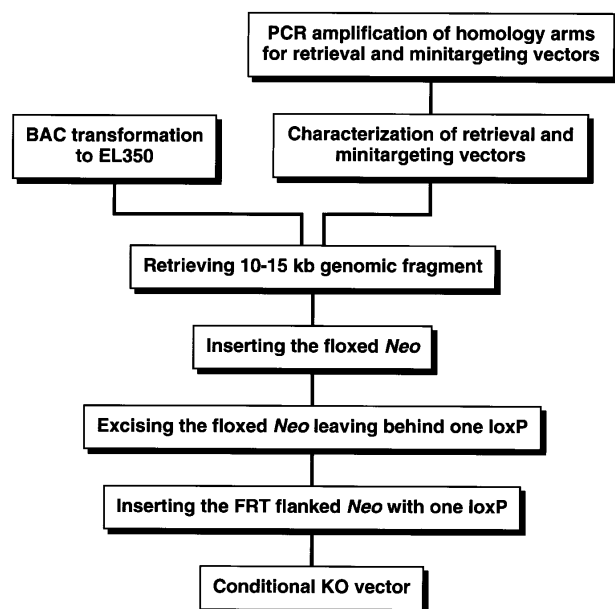


Figure 5 Flow chart showing the different steps used in making a conditional knockout targeting vector by recombineering.

The most time-consuming step in constructing the cko-targeting vector using our method is in the production of the retrieval vector and the two minitargeting vectors. However, because all of the homology arms used in the construction of these vectors are PCR-amplified from BAC DNA, only single PCR products are usually obtained, and the PCR products can thus be easily purified using spin columns. All six PCR reactions needed to construct a cko vector, including digestion of the PCR products and ligation and transformation, can be done in 1 d. Typically, it takes less than 2 wk to construct a cko-targeting vector using this method, and multiple cko vectors can be generated simultaneously. An alternative way to generate longer homology arms for homologous recombination is by using two-step fusion PCR originally designed for enhanced homologous recombination in yeast (Wach 1996). With two-step fusion PCR, the two PCR products are amplified that serve as homology regions. Because ~26 bp of selection marker sequences are included in two of the four primers used to amplify the homology regions, one strand of each of the two PCR products can serve as the primer for amplifying the selection marker (Wach 1996).

In a recent paper (Zhang et al. 2002), a mouse genomic phage library was constructed in *E. coli* cells that expresses the λ Red proteins from a plasmid. Phage clones can be isolated from this library by direct targeting of a floxed Kan^r cassette flanked by 70–80-bp homology arms (Zhang et al. 2002). Such a library provides another approach for rapidly constructing cko-targeting vectors. We believe that our protocol complements this method, and offers some advantages. For example, by using BACs rather than phage libraries for vector construction, one can precisely choose a genomic region to retrieve for further manipulation. Moreover, BACs, and DNA subcloned from BACs into high-copy plasmids, can be rapidly modified using the methods described here to create knock-in mutations and transgene constructs, as well as expedite the analysis of regulatory elements and functional domains in or near genes via deletion analysis.

METHODS

Bacterial Strains

The *E. coli* strains used in this study are listed in Table 1. EL350 cells were derived by transferring the defective λ prophage present in DY330 cells (Yu et al. 2000) into DH10B cells, to create DY380 cells (Lee et al. 2001). An arabinose-inducible *cre* gene (*P_{BAD}-cre*) was then introduced into the defective λ prophage present in DY380 cells to create EL350 cells (Lee et al. 2001). DH10B cells have been used to construct most BAC libraries and are highly permissive for BAC transformation, whereas DY330 cells are relatively resistant to BAC transformation. BACs were identified from the CITB BAC library constructed from CJ7 (129/Sv) ES cells (Research Genetics). DH10B electro-competent cells were purchased from Invitrogen.

Construction of Retrieval and Targeting Vectors

PCR primers were designed using MacVector. Primer sequences used for constructing the *Evi9* conditional knockout vector are listed below: Primer A: NotIEvi9-ex4-Ret-5'-1, 5'-ATAAGCGGCCGCTCTAATACAGAC-TGGCACCTG-3'; Primer B: H3Evi9-ex4-ret-5'-2, 5'-GTCAAGCTTTAAAGA GATCCCTGCTATAAA-3'; Primer Y: H3Evi9-ex4-Ret-3'-1, 5'-GTCAAGCTTCCTGTTTCCAGCTAGGTGAA-3'; Primer Z: SpeIEvi9-ex4-ret-3'-2, 5'-TCTACTAGTCTACCACCTGTA CAGTAAGT-3'; Primer C: NotIEvi9-ex4-5'L-1, 5'-ATAAGCG GCCGCAACAATTAGTGTGTTCCAGTT-3'; Primer D: EcoRI-BglII-Evi9-ex4-5'L-2, 5'-GTCGAATTCAGATCTAAATGGGG TACTGAGACAAG-3'; Primer E: BamHIEvi9-ex4-5'R-1, 5'-ATAGGATCCAACCAATGAGACAGTGGCACA-3'; Primer F: SalIEvi9-ex4-5'R-2, 5'-GTCGTCGCACTTATTCATGTTCCAA CAACCA-3'; Primer G: NotIEvi9-ex4-3'L-1, 5'-ATAAGCGGCCGCTTAACCTTAGACAGCATGTAT-3'; Primer H: EcoRI-Evi9-exon4-3'L-2, 5'-GTCGAATTCGTCTG CAGAGGTTAGTCAA-3'; Primer I: BamHIEvi9-ex4-3'R-1, 5'-ATAGGATCCAGAGCAGATAGCAGTGA-3'; Primer J: SalIEvi9-ex4-3'R-2, 5'-GTCGTCGCATATTACCTCACCCAAT GCTAG-3'. These primers amplify the following size fragments: 500 bp with primers A, B; 295 bp with primers Y, Z; 222 bp with primers C, D; 276 bp with primers E, F; 277 bp with primers G, H; and 227 bp with primers I, J.

PCR amplification (ROCHE Expand High-Fidelity Taq kit) was performed by setting up the first reaction mixture containing 1 μ L of dNTP (10 mM), 1 μ L of DNA (10 ng of BAC DNA), 1 μ L (10 μ M) of each primer, and 21 μ L of water. Then a second reaction mixture was set up that contained 5 μ L of 10 \times PCR buffer (#2), 0.75 μ L of high-fidelity Taq (5 U/ μ L), and 20 μ L of water. The two reaction mixtures were then combined. PCR was performed using a PE-9700 PCR machine with the following settings: 94°C for 2 min, then 10 cycles of 94°C for 15 sec, 55°C for 30 sec, and 70°C for 1 min. This was followed by 15 cycles of 94°C for 15 sec, 55°C for 30 sec, 70°C for 1 min, with an additional 5-sec extension time each cycle. To check the PCR reaction, 5 μ L of the 50- μ L PCR reaction mixture was loaded onto a gel. The remaining 45 μ L was mixed with 225 μ L of PB from QIAGEN and loaded onto a QIAGEN miniprep spin column. After a 30-sec spin, the column was washed once with 750 μ L of PE buffer. The PCR fragments were eluted using 30 μ L of EB from QIAGEN; 3 μ L of restriction buffer (10 \times) and 1 μ L of restriction enzyme was added, and the mixture was incubated at 37°C for 1 h. The digested PCR fragments were purified again with the columns and were ready for ligation.

The retrieval vector was generated by mixing 3 μ L of PCR product 1 (left arm, *NotI/HindIII*), 3 μ L of PCR product 2 (right arm, *HindIII/SpeI*), 2 μ L of *MC1TK* (PL253, *NotI/SpeI*), 1 μ L of 10 \times ligation buffer, and 1 μ L of T4 DNA ligase.

The *Neo*-targeting vector was generated by mixing 3 μ L of PCR product 1 (left arm, *NotI/EcoRI*), 3 μ L of PCR product

2 (right arm, *Bam*HI/*Sall*), 2 μ L of floxed *Neo* cassette (PL452 or PL451, *Eco*RI/*Bam*HI), 1 μ L of pSK⁺ (*Not*I/*Sall*), 1.2 μ L of 10 \times ligation buffer, and 1 μ L of T4 DNA ligase. The ligation mixtures were incubated at 16°C for 2 h, and 0.5 μ L was transformed into electro-competent DH10B cells (Invitrogen).

Transformation of BAC or Plasmid DNA Into Recombinogenic Strains

E. coli cells with BACs were grown overnight in 5 mL of LB broth with chloramphenicol. The LB broth used in our laboratory contains only 5 g of NaCl per liter. Cells were collected in three Eppendorf tubes (2 mL) and were resuspended in 250 μ L of P1 from QIAGEN. Then 250 μ L of P2 and 350 μ L of P3 were added to each tube, and the tubes were spun for 4 min. The supernatant fluid from these tubes was transferred to new 1.5-mL Eppendorf tubes, which were spun for another 4 min to clear the supernatant fluids. Finally, 750 μ L of isopropanol was added to precipitate the DNA (room temperature for 10 min), and the DNA was collected by spinning the tubes for 10 min at the maximal speed. The DNA pellet was washed once with 1.0 mL of 70% ethanol, dried, and resuspended in 50 μ L of TE (total from three tubes). For electroporation, 1 μ L of DNA was used, and for digestion 10 μ L (20 ng RNase was added to clear the RNA). Only freshly prepared BAC DNA was used for transformation.

EL350 or DY380 cells were grown in 5 mL of LB broth in a Falcon 14-mL polypropylene round-bottom tube at 32°C overnight with shaking. The next day the cells ($OD_{600} = 1.2$) were collected by centrifuging at 4000 rpm (0°C) for 5 min in Oak Ridge tubes. Cell pellets were resuspended in 888 μ L of ice-cold water. Cells were transferred to a 1.5-mL Eppendorf tube (on ice) and centrifuged using a benchtop centrifuge for 15–20 sec at room temperature. The tubes were placed on ice, and the supernatant fluids were aspirated. The process was repeated two more times. Finally, the cell pellet was resuspended in 50 μ L of ice-cold water and transferred to a pre-cooled electroporation cuvette (0.1-cm gap). Next 1 μ L of BAC DNA (100 ng) or plasmid DNA (1.0 ng) was added and mixed. Electroporation was performed using a BIO-RAD electroporator under the following condition: 1.75 kV, 25 μ F with the pulse controller set at 200 Ω . The time constant was usually set at 4.0. Then 1.0 mL of LB was added to each cuvette, which was incubated at 32°C for 1 h. Cells were spread on plates with the appropriate antibiotics.

Retrieving

EL350 cells containing BAC-A12 were inoculated into 5 mL of LB broth in a Falcon 14-mL polypropylene round-bottom tube and grown at 32°C overnight with shaking. The next day, 1.0 mL of the overnight culture ($OD_{600} = 1.2$) was transferred to 20 mL of LB ($OD_{600} = 0.05$ – 0.1) and incubated for 2 h with shaking (180 rpm, $OD_{600} = 0.5$). Next, 10 mL of the cells were transferred to a new flask and shaken in a 42°C water bath for 15 min. The cells were put into wet ice and the flask was shaken to make sure that the temperature of the flask dropped as fast as possible. The flask was left in wet ice for another 5 min. The cells were transferred to 25-mL glass centrifuge tubes and spun at 4000 rpm (0°C) for 5 min (with rubber adaptors). Cells were resuspended in 888 μ L of ice-cold water and transferred to a 1.5-mL Eppendorf tube (on ice) and washed three times with ice-cold water as described above. Finally, the cell pellet was resuspended in 50 μ L of ice-cold water, and 1–2 μ L of the purified PCR or plasmid fragment was added and electroporated as described above. The retrieval vector (200–500 ng) was digested with 20 units *Hind*III in 30 μ L volume for 1–2 h. Using excessive amounts of DNA would lead to some undigested DNA and cause severe background after transformation. 10–50 ng DNA was enough to obtain several thousand recombinant colonies.

Targeting

Frozen EL350 electro-competent cells were used for targeting in coelectroporation. The frozen cells were produced by adding a 10-mL overnight culture of EL350 (grown in two 14-mL tubes, $OD_{600} = 1.2$) to 500 mL of LB broth in a 2-L flask. The culture was then placed in a waterbath shaker at 32°C until $OD_{600} = 0.5$ (~2.0 h). The flask was then transferred to a 42°C waterbath shaker and incubated for 15 min. The flask was immediately put into an ice slurry and shaken for 5 min by hand to make sure the temperature dropped as fast as possible. The flask was put on ice for an additional 10 min. Cells were collected at 4000 rpm at 0°C for 5 min and washed three times with ice-cold water and once with cold 15% glycerol in water. Finally, cells were resuspended in 4 mL of ice-cold 15% glycerol in water. Then 50 μ L of the cells were aliquoted to pre-cooled Eppendorf tubes (80 tubes total) and stored at –80°C.

For electroporation, the frozen cells were thawed at room temperature and quickly put on ice. Cotransformation of the purified targeting cassette (100 ng in 1 μ L of EB) and the template plasmid DNA (10 ng in 1 μ L of EB) was performed using a BIO-RAD electroporator as described previously. Mini-targeting vector was digested with *Not*I and *Sall* to excise the targeting cassette. 500 ng DNA was digested in 30 μ L volume with 20 units of *Not*I and *Sall*. Since the targeting cassette is about 2.5–3 kb in most cases, it is difficult to separate it from pBluescript backbone (3.0 kb). We gel-purified the cassette and the pBluescript bands together. The mixed DNA still gave rise to high targeting efficiency.

Excision of the *Neo* Cassette

Frozen EL350 cells induced for Cre expression by prior growth in arabinose-containing medium were used for excision of the floxed *Neo* cassette. A 10-mL overnight culture of EL350 cells was added to 500 mL of LB broth in a 2-L flask. The culture was placed in a waterbath shaker at 32°C until $OD_{600} = 0.4$ (2.0 h, 180 rpm). Then 5 mL of 10% L(+)-arabinose (Sigma A-3256) in H₂O was added to the culture to a final concentration of 0.1% and shaken at 32°C for another hour. Cells were collected, and cell pellets were washed and frozen as described above. Next, 1 ng of plasmid DNA was electroporated into 50 μ L of frozen competent cells. Then 1.0 mL of LB broth was added to the electroporation cuvette; 10–100 μ L of the cells were subsequently plated on an ampicillin plate and 100 μ L on a kanamycin plate and incubated at 32°C overnight. The ampicillin plate should have 10–100 colonies, and there should be no colonies on the kanamycin plate. We used the following antibiotic concentrations in our experiments: kanamycin and chloramphenicol, 12.5 μ g/mL for BACs, 25 μ g/mL for multicopy plasmids; ampicillin, 25 μ g/mL for BACs, 100 μ g/mL for pBluescript.

Gene Targeting in Mouse ES Cells

For gene targeting, 20 μ g of *Not*I-linearized *Evi9* kco-targeting vector (PL460) DNA was electroporated into 10×10^6 CJ7 ES cells that were growing on mitomycin-C-inactivated STO cells. Transfectants were selected in M15 medium (15% fetal bovine serum in DMEM with 2 mM L-glutamine) with G418 (180 μ g/mL) and ganciclovir (2 μ M). Targeted clones were identified on Southern blots with the 5' and 3' probes.

ACKNOWLEDGMENTS

We thank Don Court and Yang Du for critical reading of this manuscript and Richard Frederickson for graphic illustration. This research was supported by the National Cancer Institute, DHHS.

The publication costs of this article were defrayed in part by payment of page charges. This article must therefore be

hereby marked "advertisement" in accordance with 18 USC section 1734 solely to indicate this fact.

REFERENCES

- Baudin, A., Ozier-Kalogeropoulos, O., Denouel, A., Lacroute, F., and Cullin, C. 1993. A simple and efficient method for direct gene deletion in *Saccharomyces cerevisiae*. *Nucleic Acids Res.* **21**: 3329–3330.
- Buchholz, F., Angrand, P.O., and Stewart, A.F. 1998. Improved properties of FLP recombinase evolved by cycling mutagenesis. *Nat. Biotechnol.* **16**: 657–662.
- Copeland, N.G., Jenkins, N.A., and Court, D.L. 2001. Mouse genomic technologies recombineering: A powerful new tool for mouse functional genomics. *Nat. Rev. Genet.* **2**: 769–779.
- Courcelle, J. and Hanawalt, P.C. 1999. RecQ and RecJ process blocked replication forks prior to the resumption of replication in UV-irradiated *Escherichia coli*. *Mol. Gen. Genet.* **262**: 543–551.
- Datsenko, K.A. and Wanner, B.L. 2000. One-step inactivation of chromosomal genes in *Escherichia coli* K-12 using PCR products. *Proc. Natl. Acad. Sci.* **97**: 6640–6645.
- Feiss, M., Siegele, D.A., Rudolph, C.F., and Frackman, S. 1982. Cosmid DNA packaging in vivo. *Gene* **17**: 123–130.
- Gray, M. and Honigberg, S.M. 2001. Effect of chromosomal locus, GC content and length of homology on PCR-mediated targeted gene replacement in *Saccharomyces*. *Nucleic Acids Res.* **29**: 5156–5162.
- Hayashi, S. and McMahon, A.P. 2002. Efficient recombination in diverse tissues by a tamoxifen-inducible form of Cre: A tool for temporally regulated gene activation/inactivation in the mouse. *Dev. Biol.* **244**: 305–318.
- Lee, E.C., Yu, D., Martinez de Velasco, J., Tessarollo, L., Swing, D.A., Court, D.L., Jenkins, N.A., and Copeland, N.G. 2001. A highly efficient *Escherichia coli*-based chromosome engineering system adapted for recombinogenic targeting and subcloning of BAC DNA. *Genomics* **73**: 56–65.
- Murphy, K.C., Campellone, K.G., and Poteete, A.R. 2000. PCR-mediated gene replacement in *Escherichia coli*. *Gene* **246**: 321–330.
- Muyrers, J.P., Zhang, Y., Testa, G., and Stewart, A.F. 1999. Rapid modification of bacterial artificial chromosomes by ET-recombination. *Nucleic Acids Res.* **27**: 1555–1557.
- Muyrers, J.P., Zhang, Y., and Stewart, A.F. 2001. Techniques: Recombinogenic engineering—New options for cloning and manipulating DNA. *Trends Biochem. Sci.* **26**: 325–331.
- Nagy, A. 2000. Cre recombinase: The universal reagent for genome tailoring. *Genesis* **26**: 99–109.
- Nakamura, T., Yamazaki, Y., Saiki, Y., Moriyama, M., Largaespada, D.A., Jenkins, N.A., and Copeland, N.G. 2000. Evi9 encodes a novel zinc finger protein that physically interacts with BCL6, a known human B-cell proto-oncogene product. *Mol. Cell. Biol.* **20**: 3178–3186.
- Pfeifer, A., Brandon, E.P., Kootstra, N., Gage, F.H., and Verma, I.M. 2001. Delivery of the Cre recombinase by a self-deleting lentiviral vector: Efficient gene targeting in vivo. *Proc. Natl. Acad. Sci.* **98**: 11450–11455.
- Poteete, A.R. 2001. What makes the bacteriophage λ Red system useful for genetic engineering: Molecular mechanism and biological function. *FEMS Microbiol. Lett.* **201**: 9–14.
- Rodriguez, C.I., Buchholz, F., Galloway, J., Sequerra, R., Kasper, J., Ayala, R., Stewart, A.F., and Dymecki, S.M. 2000. High-efficiency deleter mice show that FLPe is an alternative to Cre-loxP. *Nat. Genet.* **25**: 139–140.
- Satterwhite, E., Sonoki, T., Willis, T.G., Harder, L., Nowak, R., Arriola, E.L., Liu, H., Price, H.P., Gesk, S., Steinemann, D., et al. 2001. The BCL11 gene family: Involvement of BCL11A in lymphoid malignancies. *Blood* **98**: 3413–3420.
- Shibata, H., Toyama, K., Shioya, H., Ito, M., Hirota, M., Hasegawa, S., Matsumoto, H., Takano, H., Akiyama, T., Toyoshima, K., et al. 1997. Rapid colorectal adenoma formation initiated by conditional targeting of the Apc gene. *Science* **278**: 120–123.
- Stahl, F.W. 1998. Recombination in phage λ : One geneticist's historical perspective. *Gene* **223**: 95–102.
- Swaminathan, S., Ellis, H.M., Waters, L.S., Yu, D., Lee, E.C., Court, D.L., and Sharan, S.K. 2001. Rapid engineering of bacterial artificial chromosomes using oligonucleotides. *Genesis* **29**: 14–21.
- Wach, A. 1996. PCR-synthesis of marker cassettes with long flanking homology regions for gene disruptions in *S. cerevisiae*. *Yeast* **12**: 259–265.
- Yu, D., Ellis, H.M., Lee, E.C., Jenkins, N.A., Copeland, N.G., and Court, D.L. 2000. An efficient recombination system for chromosome engineering in *Escherichia coli*. *Proc. Natl. Acad. Sci.* **97**: 5978–5983.
- Zhang, P., Li, M.Z., and Elledge, S.J. 2002. Towards genetic genome projects: Genomic library screening and gene-targeting vector construction in a single step. *Nat. Genet.* **30**: 31–39.
- Zhang, Y., Buchholz, F., Muyrers, J.P., and Stewart, A.F. 1998. A new logic for DNA engineering using recombination in *Escherichia coli*. *Nat. Genet.* **20**: 123–128.
- Zhang, Y., Muyrers, J.P., Testa, G., and Stewart, A.F. 2000. DNA cloning by homologous recombination in *Escherichia coli*. *Nat. Biotechnol.* **18**: 1314–1317.

Received November 15, 2002; accepted in revised form December 10, 2002.