



QualTek Molecular Laboratories

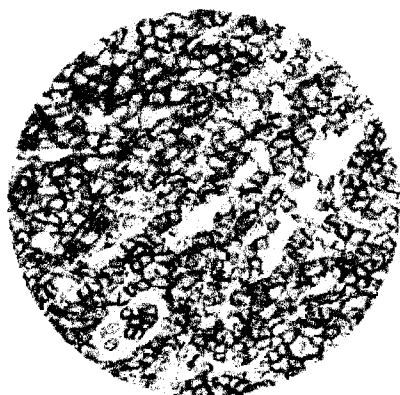


advanced molecular detection in cells and tissues



Immunodetection of Specific Proteins

QML provides a comprehensive service which can localize your proteins of interest at the organ, tissue, cellular and subcellular level in almost any species. With our automated processes and in-house expertise, we can design protocols, identify correct antibodies, antibody titers and optimal conditions to localize proteins quickly and efficiently in your cells or tissues of interest.

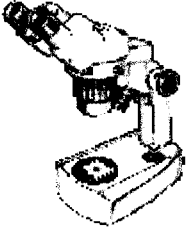


Above Image:

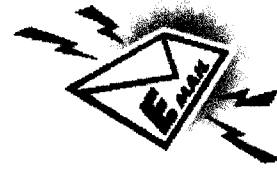
Human Tonsil, Formalin Fixed and Embedded in Paraffin, IHC-IHC (Double-Labeled) T-Cells (Brown) & B-Cells (Red)

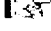
Services include:

- ICC and IHC Protocol Development
- Antibody Titer and Optimal Conditions Analyses
- Antibody Screenings in Animal or Human Cells and Tissues
- Double Antibody Labeling of Cells and Tissues
- Peroxidase, Alkaline Phosphatase, Immunogold, and Fluorescent detection
- Light, Fluorescent, or Electron Microscopy
- Protein Localization in Transgenic Animals
- *Hundreds of Specialty Markers, Including:*
 - *NEW!* Vector Detection with β - Galactosidase
 - Proliferation Markers - PCNA, Brdu, Ki67
 - Neural and Glial Markers
 - *NEW!* Apoptosis Related Proteins
 - Visualization of Low Expresser Proteins



[Click here to view the "Power of Double Labeling"](#)



 If you are interested in this or any of our services, please drop us a line.

We will have a Technical Specialist contact you immediately. Please include your name, institution, mailing address and phone number in your e-mail. Our just call us at 805-681-3200.

[[HOME](#) | [SERVICES](#) | [FAQ's](#) | [WHAT'S NEW](#) | [ABOUT US](#) | [CONTACT US](#)]

Send mail to webmaster@qmlabs.com with questions or comments about this web site.

Copyright © 1997 QualTek Molecular Laboratories

Last modified: July 26, 1998