

Review

Therapeutic Dissolution of Aberrant Phases by Nuclear-Import Receptors

Lin Guo,^{1,3} Charlotte M. Fare,^{1,2,3} and James Shorter^{1,2,*}

Nuclear-import receptors (NIRs) bind nuclear-localization signals (NLSs) of protein cargo in the cytoplasm and transport them into the nucleus. Here, we review advances establishing that NIRs also function in the cytoplasm to prevent and reverse functional and aberrant phase transitions of their cargo, including neurodegenerative disease-linked RNA-binding proteins (RBPs) with prion-like domains, such as TDP-43, FUS, hnRNPA1, and hnRNPA2. NIRs selectively extract cargo from condensed liquid phases thereby regulating functional phase separation. Consequently, NIRs sculpt cytoplasmic membraneless organelles and regulate cellular organization beyond their canonical role in nuclear import. Elevating NIR expression dissolves cytoplasmic RBP aggregates, restores functional RBPs to the nucleus, and rescues disease-linked RBP toxicity. Thus, NIRs could be leveraged therapeutically to restore RBP homeostasis and mitigate neurodegeneration.

NIRs Import Specific Protein Cargo into the Nucleus

The passage of diverse macromolecules between the cytoplasm and nucleus occurs via transport across the **nuclear pore complex (NPC)** (see [Glossary](#)) [1]. The NPC permits passive transit of small molecules, but proteins larger than 20–40 kDa must typically engage NIRs for transport across the NPC [1]. Thus, NIRs bind NLSs of protein cargo in the cytoplasm and transport them across the central channel of the NPC into the nucleus ([Figure 1](#)) [1]. Nuclear import of cargo by NIRs is orchestrated by a small GTPase, Ran, which regulates interactions between NIRs and cargo ([Figure 1, Box 1](#)) [1]. In this way, Ran-regulated NIRs enable nuclear localization of many proteins, which would otherwise be unable to cross the permeability barrier imposed by the NPC [1].

Importantly, NIRs drive the nuclear localization of several notorious RBPs with **prion-like domains (PrLDs)** that are connected with neurodegenerative disease via pathology and genetics [1–6]. In disease, these predominantly nuclear RBPs become mislocalized to cytoplasmic aggregates in degenerating cells [4]. Here, we review NIR structure and function in light of advances establishing that NIRs prevent and reverse functional and aberrant **phase separation** [7–9] of their cargo, including neurodegenerative disease-linked RBPs with PrLDs, such as TDP-43, FUS, TAF15, EWSR1, hnRNPA1, and hnRNPA2 [10–13].

Structure of NIRs

Typically, NIRs are members of the karyopherin- β (Kap β) family of proteins, which drive the majority of nuclear–cytoplasmic transport in eukaryotic cells [1]. For example, Kap β 2 [also known as transportin-1 or importin (Imp) β 2] is a NIR that shuttles cargo bearing a proline–tyrosine (PY)-NLS into the nucleus [2]. Similar to other NIRs, Kap β 2 is predominantly comprised of HEAT repeats, which are structural motifs composed of two antiparallel helices A and B [1].

Highlights

NLSs function as antiaggregation and disaggregation signals in the cytoplasm.

NIRs prevent and reverse functional and pathological phase separation of NLS-bearing cargo, including RBPs with prion-like domains connected to neurodegenerative disease.

NIRs shape cytoplasmic membraneless organelles and regulate cellular organization beyond their canonical role in nuclear import.

Elevating NIR expression dissolves cytoplasmic RBP aggregates, restores functional RBPs to the nucleus, and rescues disease-linked RBP toxicity.

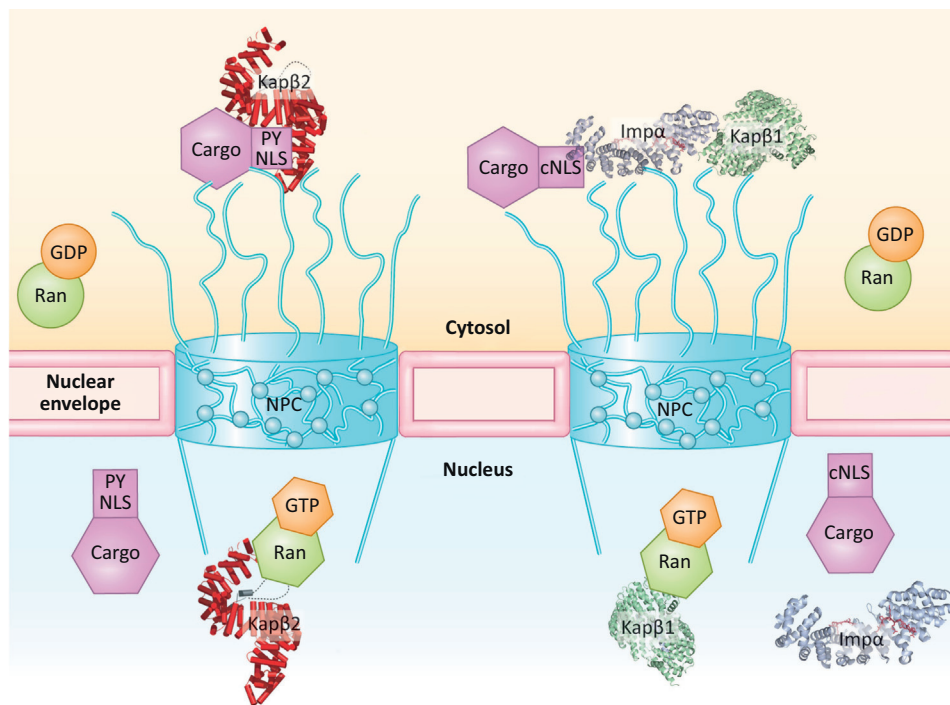
NIRs could be leveraged therapeutically to restore RBP homeostasis and mitigate neurodegeneration.

¹Department of Biochemistry and Biophysics, Perelman School of Medicine, University of Pennsylvania, Philadelphia, PA 19104, USA

²Biochemistry and Molecular Biophysics Graduate Group, Perelman School of Medicine, University of Pennsylvania, Philadelphia, PA 19104, USA

³Joint first authors

*Correspondence: jshorter@pennmedicine.upenn.edu (J. Shorter).



Trends in Cell Biology

Figure 1. Mechanisms of Nuclear Import. Kapβ2 has low affinity for Ran-GDP (Box 1) in the cytoplasm and can bind cargo bearing a PY-NLS. Kapβ2 then transports cargo into the nucleus, where upon binding to Ran-GTP with high affinity, Kapβ2 undergoes a conformational change and unloads its cargo. This mechanism of nuclear import is distinct from that used by Kapβ1, which must form a heterodimer with a member of the Impα family to exert its function. Impαs recognize cNLSs, but only when in complex with Kapβ1. When this ternary complex enters the nucleus, Ran-GTP binds Kapβ1, causing it to release Impα. Once Impα is separated from Kapβ1 in the nucleus, its associated cargo is released. Abbreviations: cNLS, canonical, lysine-rich NLS; Imp, importin; Kap, karyopherin; NLS, nuclear localization signal; NPC, nuclear pore complex; PY-NLS, proline-tyrosine NLS.

The HEAT repeats coil to form a stacked superhelix in which the B helices form the inner hydrophobic core and the A helices form the outer convex surface (Figure 2A) [3,14–16]. The two arches of the superhelix are structurally similar, but differ in their binding partners. The N-terminal arch (HEAT repeats 1–8) binds to Ran, which regulates interactions with cargo (Figure 1, Box 1), while the C-terminal arch (HEAT repeats 12–20) binds to PY-NLS-bearing cargo (Figure 2A) [1–3,17].

Box 1. The Ran Cycle and Nuclear Transport

Ran is a small GTPase, which can hydrolyze GTP and switch between a GTP- and GDP-bound state [19]. The nucleotide state of Ran is regulated by the activity of GEFs and GAPs. GEFs stimulate the exchange of GDP for GTP and the Ran-GEF, Rcc1, is enriched in the nucleus [19]. GAPs, in contrast, work to accelerate GTPase activity. RanGAP is enriched in the cytoplasm where it promotes the conversion of RanGTP to RanGDP [19]. By differentially localizing RanGAP and Rcc1, the cell creates a concentration gradient where Ran-GTP is concentrated in the nucleus and Ran-GDP is concentrated in the cytoplasm. The Ran concentration gradient is leveraged to facilitate directional nuclear transport. Kapβ1 and Kapβ2 both have a high affinity for Ran in its GTP-bound state [18,126]. Thus, in the cytoplasm where Ran-GDP is the dominant species, NLRs exist in a conformation that allows cargo binding. Upon entering the nucleus, where Ran-GTP is abundant, NLRs undergo a conformational rearrangement that results in the loaded NLS-bearing cargo being displaced (see Figure 1 in main text).

Glossary

Aberrant phase transitions:

transition of the material state from a liquid to a solid-like state. Aberrant phase transition leads to a less dynamic material state and the formation of protein hydrogel, aggregates, and fibrils. Aberrant phase transition is often accelerated by disease mutations in the PrLD and other intrinsically disordered domains.

Adeno-associated virus (AAV):

a small virus that infects humans, but elicits only a mild immune response. AAVs have been adapted for gene-therapy purposes where they can express a gene from an extrachromosomal state without integrating into the host genome. Gene delivery by AAVs is now a FDA-approved therapy for congenital blindness [127].

Disaggregase: agent that catalytically drives the disassembly of protein aggregates.

Gel: material network formed by crosslinks between the component macromolecules. The crosslinks can be covalent (i.e., a chemical gel) or noncovalent (i.e., a physical gel). Gels vary widely in their material properties, and are determined as a function of the extent, pattern, and longevity of crosslinking.

Membraneless organelle: a membrane-bound organelle is a cellular compartment that is delimited by a lipid bilayer. In s organelle is a non-membrane-bound cellular compartment that is formed by LLPS and is typically a condensate of proteins and nucleic acid. Examples of membraneless organelles include the nucleolus in the nucleus and stress granules in the cytoplasm.

Molecular chaperones: proteins that assist protein folding, unfolding, and the assembly or disassembly of other macromolecular structures.

Nuclear pore complex (NPC):

regulates transport to and from the nucleus. Embedded throughout the nuclear envelope, each nuclear pore is a ~125-MDa structure with three major regions: cytoplasmic-facing filaments, a central pore, and a nuclear basket. NLRs interact with a subset of NPC proteins that have regions enriched in phenylalanine and glycine residues. These FG-rich nucleoporins (FG-Nups) are essential

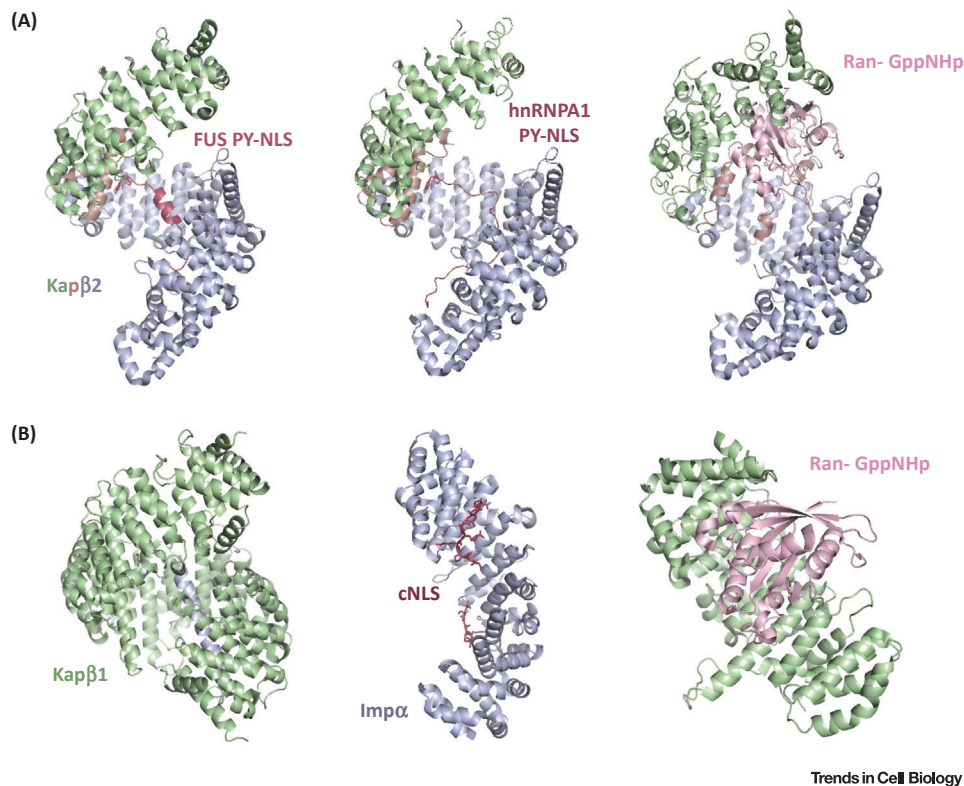


Figure 2. Structures of Nuclear-Import Receptors. (A) Structural architecture of Kapβ2. Kapβ2 acts as a single molecule to transport proteins bearing a PY-NLS into the nucleus. Kapβ2 is composed of 20 HEAT repeats. HEAT repeats 1–7 are shown in green, repeat 8 in taupe, and repeats 9–20 in blue. Kapβ2 cargos are varied, and can have structured regions, as with the PY-NLS (dark pink) of FUS (Left, PDB: 4FDD), or completely unstructured regions, as with the PY-NLS (dark pink) of hnRNPA1 (Middle, PDB: 2H4M). To release cargo in the nucleus, the N-terminal arch of Kapβ2 (HEAT repeats 1–7, green, and repeat 8, taupe) binds to Ran-GTP (light pink), causing an extended acidic loop in HEAT repeat 8 to displace the cargo loaded into the C-terminal arch (HEAT repeats 12–20) (Right, PDB: 1QBG). (B) Structural architecture of Kapβ1 (green) and Impα (blue). Cargo bearing a cNLS is transported into the nucleus by a heterodimer of Kapβ1 (left, PDB: 1QGK) and Impα (middle, PDB: 5E6Q). Impα binds to a cNLS (shown in dark pink) only when associated with Kapβ1. The N-terminal Impβ-binding domain of Impα binds Kapβ1. Upon entering the nucleus, Ran-GTP (light pink) binds to Kapβ1, thus displacing Impα (right, PDB: 1IBR). As a result of this dissociation, Impα releases its cargo. Abbreviations: Kap, karyopherin; cNLS, canonical, lysine-rich NLS; Imp, Importin; NLS, nuclear localization signal; PY-NLS, proline-tyrosine NLS.

Communication between the N- and C-terminal arches of Kapβ2 is mediated by an extended acidic loop between the A and B helices of the HEAT repeat 8 [2,18]. This loop is critical for Ran-GTP-dependent cargo release in the nucleus (Figures 1 and 2A, Box 1) [18]. Kapβ2 has a low affinity for Ran-GDP, which is enriched in the cytoplasm due to an asymmetric distribution of the Ran GTPase activating protein (GAP) in the cytoplasm and the Ran guanine nucleotide exchange factor (GEF) in the nucleus (Box 1) [1]. Thus, in the cytoplasm Kapβ2 can engage PY-NLS bearing cargo (Figure 1). Once Kapβ2 enters the nucleus with its cargo, there must be a specific mechanism for cargo release. This is where the acidic loop functions: upon binding to Ran-GTP with high affinity, Kapβ2 undergoes a conformational change and the acidic loop is moved to the cargo-binding site, unloading the cargo (Figures 1 and 2A) [2,18,19]. Indeed, when this acidic loop is truncated, Kapβ2 maintains its ability to engage cargo in the cytoplasm, but is unable to release cargo in the nucleus in a Ran-GTP-dependent manner [16,18].

for cell viability, have no clear secondary structure, and can form gels under certain conditions. Thus, it is hypothesized that NIRs make multiple weak and transient contacts with FG-Nups, which enable them to traverse the nuclear pore.

Phase separation: also known as liquid–liquid phase separation or liquid–liquid demixing, occurs when a single-phase fluid converts into at least two distinct, immiscible liquid phases.

Prion: infectious proteins capable of conformational replication, which occurs as the prion conformer templates the folding of other copies of the protein to the prion state.

Prion-like domain (PrLD): specific type of low-complexity domain enriched in uncharged polar amino acids and glycine. A PrLD resembles in amino-acid composition the prion domain that enables specific yeast proteins, such as Rnq1 and Sup35, to form prions.

Repeat-associated non-AUG

(RAN) translation: a form of noncanonical translation, which is initiated by repetitive sequences in the absence of an AUG start codon. RAN translation can proceed in multiple reading frames and produces multiple homopolymeric or dipeptide repeat-containing polypeptides.

Stress granules (SGs): reversible cytoplasmic membraneless organelles that form in response to cellular stress. SGs are dense structures composed of proteins, nontranslating mRNAs, and stalled translation-initiation complexes.

When stress passes, SGs disassemble.

Repeat-associated non-AUG

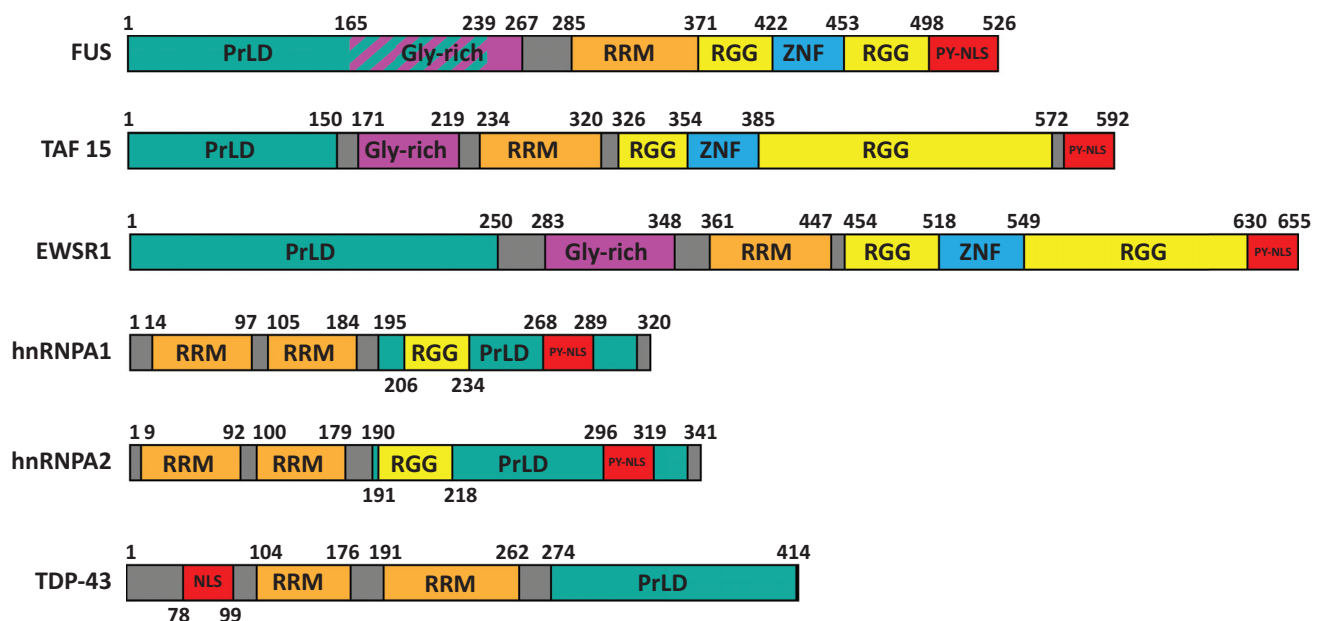
(RAN) translation: a form of noncanonical translation, which is initiated by repetitive sequences in the absence of an AUG start codon. RAN translation can proceed in multiple reading frames and produces multiple homopolymeric or dipeptide repeat-containing polypeptides.

This mechanism of nuclear import differs from that used by another karyopherin, Kap β 1 (also known as Imp β 1) (Figure 2B). Kap β 1 forms a functional heterodimer with a member of the Imp α family (Figures 1 and 2B) [2,20–22]. Imp α recognizes the canonical, lysine-rich NLS (cNLS), but only when in complex with Kap β 1 [21–23]. When this ternary complex enters the nucleus, Ran-GTP binds Kap β 1, causing it to release Imp α (Figures 1 and 2B) [2,24,25]. Once Imp α is separated from Kap β 1 in the nucleus, its associated cargo is released (Figure 1) [24,26]. Separating the cargo-binding function from the nuclear-import activity of the Kap β 1/Imp α system provides an additional level of regulation; a safeguard to ensure proper nuclear transport of over 50% of nuclear proteins [19,24–27].

The all-in-one design of Kap β 2 makes it an attractive NIR to study. Kap β 2 recognizes cargo and navigates through the **gel**-like phase of the nuclear pore on its own [2,3,18,28]. This dual functionality is likely important for newly realized functions ascribed to Kap β 2, including preventing and reversing functional and **aberrant phase transition** of cargo in the cytoplasm [10–13,29].

Cargo Recognition by NIRs

Kap β 2 cargo generally harbors a PY-NLS (Figure 3), which can be 15–100 amino acids in length [1,2]. Unlike the larger class of lysine-rich cNLSs recognized by Imp α / β , PY-NLSs have three important epitopes: (i) an N-terminal hydrophobic or basic epitope, (ii) the arginine of the R-X_{2–5}P-Y/ Φ (Φ is a hydrophobic residue) motif, and (iii) the PY or homologous P Φ motif of the C-terminal R-X_(2–5)-PY/ Φ motif [2,3,20,30]. The list of cargo recognized by Kap β 2 is still growing and includes several disease-linked RBPs with PrLDs (Figure 3) [1,3]. RBPs with PrLDs have garnered attention due to their involvement in liquid–liquid phase separation (LLPS)



Trends in Cell Biology

Figure 3. Domain Map of NIR Cargo. Domain architecture of FUS, TAF15, EWSR1, hnRNP A1, hnRNP A2, and TDP-43. Domains are indicated: prion-like domain (PrLD, green), Gly-rich domain (purple), RNA-recognition motif (RRM, orange), RGG domain (yellow), zinc finger (ZNF, blue), and NLS (red). Abbreviations: NIR, nuclear-import receptor; NLS, nuclear localization signal.

and **membraneless organelle** biogenesis [7–9], as well as for their mislocalization to cytoplasmic aggregates in neurodegenerative diseases such as amyotrophic lateral sclerosis (ALS) and frontotemporal dementia (FTD) [4,5,8,9,31–38]. Thus, understanding how Kap β 2 ferries these RBPs between the nucleus and the cytoplasm is an important area of research.

Proteins that have a PY-NLS are the most well-studied class of cargo recognized by Kap β 2, but we are only beginning to appreciate the diverse array of cargo that Kap β 2 is capable of engaging [1]. Identifying proteins harboring a PY-NLS has been a predictive heuristic for identifying Kap β 2 cargo, but this sequence is surprisingly not necessary, and Kap β 2 can engage and transport proteins to the nucleus that vary dramatically in composition. For example, Kap β 2 recognizes the histone H3 tail, which lacks the titular PY residues of the PY-NLS [30]. Instead, Kap β 2 binds the H3 tail through electrostatic and entropic interactions [30]. Despite lacking a PY epitope, the H3 tail binds to Kap β 2 with high affinity, with a K_d similar to other characterized Kap β 2–cargo interactions [30]. Kap β 2 also interacts with several other proteins that lack a PY-NLS, including RNA helicase DDX3, **molecular chaperones** Hsp70 and Hsp90, FOXO transcription factors, and HuR [3,18,39–41]. In some cases, these proteins may interact with other cargo with a canonical PY-NLS and thus ride ‘piggy-back’ into the nucleus, but in other cases direct interaction with Kap β 2 may be important [1,2]. The diversity observed in the repertoire of Kap β 2 binding partners supports the hypothesis that cargo recognition by Kap β 2 is sensitive to a combination of features, each of which has its own range of allowable properties [2,18].

Epitope sensitivity can be understood by comparing how Kap β 2 binds to different domains within each cargo. The distribution of binding energy has been probed by systematically mutating residues of the well-characterized PY-NLS of hnRNPA1 to alanine and assessing the effect of these mutations on binding affinity [2]. Surprisingly, single mutations to either the Pro or Tyr of the PY-NLS resulted in only a modest decrease in binding affinity, and single mutations elsewhere along the binding interface had little effect [2]. Furthermore, when combined, alanine mutations have a nonadditive effect, suggesting that Kap β 2 binding is cooperative [2]. Remarkably, once bound to a PY-NLS, Kap β 2 can make secondary contacts with the cargo [10,11,13]. For example, Kap β 2 binding to FUS depends on the PY-NLS, but upon engaging the PY-NLS, Kap β 2 can make secondary low-affinity interactions with other domains of FUS, including the RGG domains (a domain enriched in repeats of Arg–Gly–Gly often interspersed with hydrophobic residues), RNA-recognition motif (RRM), and PrLD [11,13]. These interactions cause FUS to eject bound RNA, thereby enabling an apo-form of the RBP to be transported back to the nucleus where it can bind new RNAs [11,13].

Cargo and Stress Granules

During stress, cells must conserve and redirect their limited energy to avoid severe damage. To this end, cells pause translation of most mRNAs except for those encoding various heat-shock proteins, and store transcripts and RBPs in cytoplasmic membraneless organelles called **stress granules (SGs)** [9,42–44]. Many NIR cargos and NIRs themselves become sequestered in SGs [10,45]. The formation of SGs is a normal protective process, but it can become deleterious if SGs persist for too long in the cytoplasm [10,37,42–44,46–48]. Notably, mutations that promote SG assembly or prevent SG disassembly in RBPs with PrLDs have been linked to the development of neurodegenerative disorders, including ALS, FTD, and multisystem proteinopathy (MSP) [10,32,35,43,49–57]. Within SGs, there is a high local concentration of aggregation-prone proteins, and improper temporal maintenance promotes intra- and intermolecular interactions, thereby facilitating protein aggregation [4,5,10,31–34,43,46,58,59]. Kap β 2 plays an important role in SG regulation. Many of the RBPs found

in SGs are cargo recognized by Kap β 2 [2,3,10]. Indeed, Kap β 2 can selectively extract cargo from SGs without affecting SG assembly *per se* [10]. Nonetheless, complete resolution of SGs is in part dependent on Kap β 2 activity [10,11]. This dependence becomes more apparent in cases where cargo harbors mutations that reduce the affinity of Kap β 2 binding [10,11,13,17,60].

Cargo and Disease

Many NIR cargos are RBPs with PrLDs that are connected with ALS and FTD, including TDP-43, FUS, EWSR1, TAF15, hnRNPA1, and hnRNPA2 (Figure 3) [4–6]. These RBPs mislocalize to cytoplasmic inclusions in degenerating neurons [4–6,32,61,62]. For example, TDP-43 is mislocalized to cytoplasmic aggregates in degenerating neurons of ~97% of ALS cases and ~45% of FTD cases [4]. By contrast, FUS is mislocalized to cytoplasmic aggregates in degenerating neurons of ~1% of ALS cases and ~9% of FTD cases [4]. TDP-43 and FUS pathology are mutually exclusive [4]. Cytoplasmic EWSR1 and TAF15 aggregates are found in all FTD cases with FUS pathology and have been observed in sporadic ALS [4,61,62]. Cytoplasmic hnRNPA1 and hnRNPA2 inclusions are found in degenerating tissues of patients with MSP, an inherited pleiotropic degenerative disorder that can affect muscle, bone, and the nervous system [4,32,63]. MSP is rare and has been diagnosed in several hundred people worldwide [63]. Operationally, MSP is defined as a combination of two or more of inclusion body myopathy, Paget's disease of bone, and ALS/FTD [63].

In addition to pathology, mutations in the genes that encode these RBPs are linked to sporadic and familial forms of disease [4–6,32,61,62]. Mutations in the gene encoding TDP-43 are found in ~1% of ALS cases [64]. Likewise, mutations in the gene encoding FUS are also found in ~1% of ALS cases [64]. Mutations in the genes encoding TAF15, EWSR1, and hnRNPA1 are rare in ALS [32,61,62,65], whereas mutations in the genes encoding hnRNPA1 and hnRNPA2 occur in MSP [32,63]. Often, these mutations accelerate RBP fibrillization, aberrant phase transitions, or promote cytoplasmic mislocalization [4].

Several disease-linked mutations have been found in the PrLDs of RBPs [4]. PrLDs possess a distinctive low-complexity composition enriched in uncharged polar amino acids and glycine [4–6]. PrLDs are similar to **prion** domains, which enable various yeast proteins such as Sup35 and Rnq1 to form prions in yeast [4–6]. In the context of human RBPs, PrLDs are important protein–protein interaction domains that enable functionality, and promote LLPS and fibrillization [4–6,35,43,66–68]. Additional intrinsically disordered domains can also contribute to LLPS [8]. For example, FUS also has two intrinsically disordered RGG domains (Figure 3) that contribute to LLPS [4,11,13,69]. Cation– π or π – π interactions between the arginine residues in RGG domains and tyrosine residues in the PrLD of FUS promote FUS LLPS [11–13,69,70]. However, if FUS dwells in a dense liquid state for too long then it converts to a gel or solid phase, which comprises self-templating fibrils as the PrLD switches from an intrinsically disordered state to a cross- β polymeric state [10,71,72]. This transition from liquid to gel or solid is termed an aberrant phase transition, and can be accelerated by disease-linked mutations in PrLDs and other domains [35,71,73].

Disease-linked mutations in FUS and hnRNPA1 can also fall in the PY-NLS recognized by Kap β 2 [4,10,17]. Importantly, the degree to which ALS-associated mutations affect Kap β 2 binding correlates with the degree of impaired nucleocytoplasmic transport, as well as the severity of disease [17,74]. For example, a mutation to the PY-NLS of FUS underlies a particularly aggressive form of juvenile ALS [10,17,60,74]. In this mutation, P525L, the Pro of the PY-NLS is mutated to Leu, resulting in a ninefold decrease in affinity for Kap β 2 [17].

Consequently, cells expressing the P525L mutant exhibit cytoplasmic mislocalization of FUS, and more generally the severity of cytoplasmic mislocalization of ALS-linked FUS variants with mutations in their PY-NLS is inversely correlated with age of disease onset [74]. Similar mutations to the critical P of the PY-NLS of hnRNPA1 have also been linked to ALS [51,75]. Because RBPs tend to self-associate, a mutation in just one RBP can have dominant, far-reaching effects on nucleocytoplasmic homeostasis [4]. When one RBP is cytoplasmically mislocalized and aggregated, it will sequester additional copies of the RBP, even if their NLS is wild type (WT) [4].

Nucleocytoplasmic Transport Dysfunction in Disease

Accumulating evidence suggests that nucleocytoplasmic transport defects are a shared mechanism contributing to the disease initiation and progression of ALS and FTD, even in cases where no apparent mutations in RBP NLSs are observed [76,77]. For example, in FTD, WT FUS mislocalization is seen in ~9% of cases [78,79]. Additionally, the RBP TDP-43 is cytoplasmically mislocalized in ~97% of ALS patient and ~45% of FTD patients [80]. In most cases, WT TDP-43 accumulates in cytoplasmic aggregates, and only ~1% of ALS cases present with TDP-43 mutations, which are usually located in the TDP-43 PrLD [4,64,80]. Moreover, cytoplasmic TDP-43 aggregates sequester NIRs, leading to dysfunction of nucleocytoplasmic transport [81]. The involvement of NIRs in ALS/FTD pathogenesis is suggested by studies in which postmortem tissue from ALS and FTD patients revealed reduced NIR expression, NIR mislocalization, or both in the brain and spinal cord [76].

Several studies also connect C9orf72 hexanucleotide repeat expansion (HRE), the most common genetic cause of ALS and FTD, to aberrant nucleocytoplasmic transport [82–86]. C9orf72 HRE can induce toxicity via both the repeat-containing RNA itself and the polydipeptide repeat products (DPRs) that are produced by **repeat-associated non-AUG (RAN) translation** from the sense or antisense transcript of the HRE [87–90]. Additionally, the C9orf72 HRE can reduce C9orf72 expression, which may result in haploinsufficiency phenotypes [90]. Genetic models of ALS that express the HRE transcript, DPRs, or both, have been used to identify modifiers of HRE toxicity [82–86]. The modifiers identified include Kap β family members, Ran, RanGAP, Ran-GEF, and NPC components [82–86]. Specifically, knockdown of the fly homologs of Kap β 1 or Kap β 2 acts as an enhancer of toxicity in fly models of C9-ALS [82,85]. Furthermore, overexpression of the yeast homolog of Kap β 2 (Kap104) in DPR-expressing yeast acts as a potent suppressor of toxicity, and overexpression of Kap β 1 in mouse primary neurons expressing the poly-PR DPR suppresses toxicity [77,83].

In addition, nucleocytoplasmic transport defects are also observed in other neurodegenerative diseases. For example, Imp α 1 is found in inclusions in neurons from patients with Alzheimer's diseases [91,92]. General defects in nucleocytoplasmic transport have also been demonstrated in a variety of models for Huntington's disease that express polyQ-expanded huntingtin protein or the RAN-translation products of the CAG repeat expansion [93,94]. A common risk factor for these neurodegenerative diseases is aging. NIRs are downregulated and can be mislocalized upon aging [95–97]. Moreover, nucleocytoplasmic transport defects can be caused by the accumulation of misfolded proteins in the cytoplasm [98]. Thus, nucleocytoplasmic transport dysfunction may contribute to aging phenotypes and age-related neurodegenerative diseases.

The connection between nucleocytoplasmic transport dysfunction and neurodegenerative disease is supported by the discovery that nuclear-export inhibitors are neuroprotective agents in C9-ALS, TDP-43-ALS, and Huntington's disease [81,94]. For example, two small-molecule

inhibitors of nuclear export, KPT-335 and KPT-276, rescued primary mouse cortical neurons transfected with ALS-linked TDP-43^{Q331K} and reduced the number of cells with abnormal nuclear morphology [81]. However, the mechanism by which KPT-335 and KPT-276 rescue toxicity remains uncertain and is unlikely to be due to a direct effect on TDP-43 export. Indeed, TDP-43 diffuses passively out of the nucleus and is not exported by exportin-1 (CRM1/XPO1), the target of KPT-335 and KPT-276 [99,100]. Additionally, Thiamet-G, an O-GlcNAcase inhibitor that results in increased glycosylation events involved in NPC homeostasis, or KPT-350, an inhibitor of canonical nuclear export, can restore nucleocytoplasmic transport function and rescue cell death in primary neurons transfected with full-length huntingtin with a pathogenic polyQ expansion and in a *Drosophila* Huntington's disease model [94].

Although the link between protein aggregation, nucleocytoplasmic transport, and neurodegeneration is established, the temporal relationship of these events is not clear. For cases where a disease-linked RBP bears a mutation in its NLS, RBP mislocalization likely precedes aggregation. However, nucleocytoplasmic transport defects may also be an early event in ALS/FTD pathogenesis. For example, expression of C9orf72 HRE results in defects in the NPC and in nucleocytoplasmic transport, which elicit TDP-43 mislocalization and aggregation [84]. Moreover, upon stress, NIRs are recruited into SGs, which might reduce the effective NIR concentration and trigger protein aggregation [10,45]. Alternatively, TDP-43 aggregates could sequester components of the NPC and nucleocytoplasmic transport machinery and cause nucleocytoplasmic transport dysfunction [81]. A positive feed-forward loop is also proposed, in which protein aggregates or DPRs obstruct the nuclear pore, which, in turn, causes TDP-43 and other aggregation-prone proteins to accumulate in the cytoplasm, resulting in further nuclear pore damage and prolonged transport defects [81,101]. Irrespective of the precise mechanism, agents that simultaneously reverse RBP aggregation and mislocalization would rescue toxicity associated with dysfunctional nucleocytoplasmic transport [10,102–104].

New NIR Functions in Preventing and Reversing Aberrant Phase Separation

Several groups have reported new functions for NIRs [10–13]. We reported that NIRs potently inhibit and reverse LLPS, aberrant phase transition, and fibrillization of several RBPs with PrLDs implicated in ALS, FTD, and MSP [10]. While NIRs have been found to function as chaperones before [105–107], the ability to rapidly disaggregate cargo that has converted to stable cross- β polymers, and to prevent and reverse aberrant phase transitions was unanticipated [10–13]. For example, we established that Kap β 2 prevents the fibrillization and LLPS of PY-NLS bearing RBPs including FUS, EWSR1, TAF15, hnRNPA1, and hnRNPA2 [10]. Importantly, we demonstrated that Kap β 2 also disassembles preformed fibrils, liquid droplets, and hydrogels composed of these disease proteins [10]. Kap β 2 does so by engaging the PY-NLS of these RBPs [10,13]. Similarly, we established that Imp α and Kap β 1 engage the cNLS to prevent and reverse TDP-43 fibrillization [10].

We discovered that Kap β 2 rapidly dissolves FUS, EWSR1, and TAF15 fibrils [10]. After binding the exposed PY-NLS on FUS, EWSR1, and TAF15 fibrils, Kap β 2 might extract individual RBPs from the fibril via entropic pulling or collision pressure [108,109]. However, unlike Kap β 2, an antibody that binds to the FUS PY-NLS is unable to dissolve FUS fibrils, which argues against this model [10]. Instead, binding to the PY-NLS enables Kap β 2 to engage secondary binding sites in the PrLD and rapidly and forcibly disrupt intermolecular contacts that maintain fibril integrity [10]. In contrast, we found that Kap β 2 only slowly disassembles hnRNPA1 and hnRNPA2 fibrils [10]. Unlike FUS, the PY-NLS of hnRNPA1 or hnRNPA2 is not at the extreme C-terminal end of the protein (Figure 3). Thus, accessing the PY-NLS in hnRNPA1 or hnRNPA2 fibrils is likely more difficult since it is sequestered from solvent in the cross- β fibril core [110].

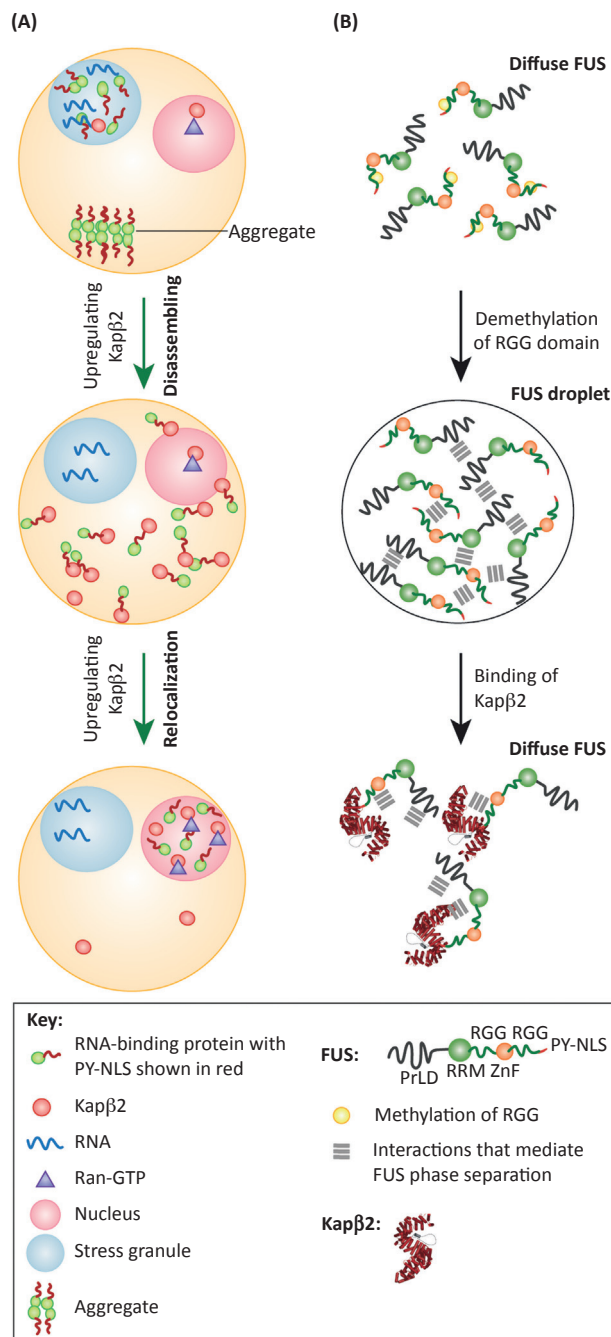
Nonetheless, thermal fluctuations may enable Kap β 2 to engage the PY-NLS to dissolve hnRNPA1 and hnRNPA2 fibrils [10]. Moreover, Kap β 2 dissolved hnRNPA2 fibrils more effectively than MSP-linked hnRNPA2^{D290V} fibrils [10], which may be due to increased stability of hnRNPA2^{D290V} fibrils compared to WT hnRNPA2 fibrils [111].

The chaperone and disaggregation activity of Kap β 2 is regulated by the small GTPase, Ran (Box 1) [10,13]. Indeed, we established that Ran-GDP allows Kap β 2 chaperone and disaggregation activity, whereas Ran-GTP inhibits Kap β 2 chaperone and disaggregation activity by preventing Kap β 2 interactions with the PY-NLS of cargo [10]. This regulation by Ran implies that the chaperone and disaggregation activity of Kap β 2 is likely restricted to the cytoplasm [10,13]. Once the Kap β 2: cargo complex reaches the nucleus it is dissociated by Ran-GTP. Thus, cargo is now free to perform nuclear functions, and Kap β 2 can be recycled to the cytoplasm for further rounds of chaperone or disaggregation activity. In this way, Ran-GTP completes Kap β 2-mediated disaggregation and makes the nuclear-import system as a whole a catalytic **disaggregase** [10].

These findings change our view of NIRs. They are not only involved in nuclear import but also chaperone and disaggregate cargo in the cytoplasm [10,13]. These findings also change our view of the NLS as it is not merely a signal for nuclear localization. Rather, by recruiting NIRs the NLS is an antiaggregation and disaggregation signal in the cytoplasm [10,13]. Moreover, we have established that the TDP-43 cNLS contains a poly(ADP-ribose) (PAR)-binding motif, which enables PAR to stimulate TDP-43 LLPS and recruit TDP-43 to PAR-rich SGs [46]. Thus, NLSs serve multiple functions that are distinct from their canonical role in nuclear import.

In diverse cellular models, Kap β 2 expression prevents and reverses FUS accumulation in SGs and increases cell viability (Figure 4A) [10,11]. The activity of Kap β 2 to reduce FUS association with SGs is independent of its nuclear-import activity [10,11]. We found that FUS fibril dissolution by Kap β 2 yields soluble Kap β 2:FUS complexes, which are competent for nuclear transport (Figure 4A) [10]. Indeed, we discovered that Kap β 2 disassembled cytoplasmic FUS foci and restored FUS nuclear localization in yeast [10]. In ALS-patient fibroblasts bearing the FUS^{R521H} mutation in the PY-NLS, FUS activity in pre-mRNA splicing is reduced [10]. However, upon increased Kap β 2 expression, FUS activity in pre-mRNA splicing is increased in these patient cell lines, indicating that Kap β 2 restores both FUS localization and function [10]. Finally, elevated Kap β 2 expression suppressed neurodegeneration and increased lifespan in a *Drosophila* model where FUS^{R521H} is expressed only in motor neurons [10]. Likewise, Kap β 2 suppressed muscle degeneration elicited by MSP-linked hnRNPA2^{D290V} [10]. Thus, we suggest that increasing NIR expression could have therapeutic utility in ALS, FTD, and MSP [10].

Independently, Qamar and colleagues showed Kap β 2 reduces phase separation and gelation of methylated and hypomethylated FUS [12]. In *ex vivo* *Xenopus* retinal neurons, FUS condensation into stable cross- β hydrogels disrupts RNP granule function at nerve terminals and impairs new protein synthesis [12]. Like FUS, Kap β 2 is a resident of these RNP granules [12]. Remarkably, modestly increasing Kap β 2 expression fluidizes the granule phase imposed by aberrant FUS gelation, thereby restoring granule function and local translation in axon terminals [12]. Thus, Kap β 2 can suppress FUS toxicity in diverse settings [10,12]. Moreover, these findings establish that NIRs can rescue RBP toxicity by reversing aberrant phase transitions, in addition to their canonical function in nuclear import [10,12]. Collectively, these activities enable NIRs to shape the contents and architecture of cytoplasmic membraneless organelles [10–13,29].



Trends in Cell Biology

How does Kapβ2 inhibit FUS LLPS? NMR analyses suggest that Kapβ2 binds to the FUS PY-NLS with high affinity, tethering the proteins together [11,13]. Once firmly bound, Kapβ2 disrupts FUS self-association and blocks LLPS by establishing multiple weak intermolecular contacts distributed across FUS domains that mediate LLPS, including the PrLD and the RGG

domains (Figure 4B) [11,13,69,112,113]. Kap β 2 also binds to RGG regions and the ZnF and RRM domains that were previously shown to facilitate FUS binding to RNA [11,13]. Indeed, Kap β 2 competes with RNAs for FUS binding [11,13]. Because RNA concentration can influence FUS aggregation and LLPS [114], these data suggest that Kap β 2 may also modulate LLPS of FUS by mimicking interactions with RNA. The phase separation of a chimeric FUS protein where the PY-NLS of FUS is replaced with a nuclear-export sequence (NES), is not inhibited by its cognate Kap β protein, exportin-1 (CRM1/XPO1), even though the two proteins bind to each other tightly [13]. Thus, chaperone activity may be restricted to NIRs, although whether exportins regulate phase transitions of their endogenous cargo rather than a chimeric protein remains unclear. Although FUS and TDP-43 are predicted to have well-defined NESs, their export from the nucleus does not appear to depend on exportins [99,100,115,116]. Notably, we found that ~75% of human PrLD-containing proteins harbor a cNLS or PY-NLS [10]. Thus, NIRs likely function broadly to antagonize aberrant phase transitions of proteins with PrLDs. Moreover, even when the PY-NLS of FUS is deleted, high concentrations of Kap β 2 disrupt FUS LLPS by making many weak contacts, indicating that the chaperone function of NIRs extends beyond NLS-containing proteins, and that NIRs could help regulate an extended catalog of membraneless organelles [13]. Indeed, Kap β 2 could use the same weak and highly dynamic interactions that disrupt FUS self-assembly to pass through hydrogels formed by phenylalanine-glycine (FG) repeats in various nucleoporins to traverse the NPC [28,117].

The nuclear-import activity of Kap β 2 is affected by several factors. Mutations in the PY-NLS can reduce binding affinity between Kap β 2 and cargo, disrupting nuclear import [17,74]. We discovered that Kap β 2 chaperone and disaggregation activity is also impaired by mutations in the cargo PY-NLS [10]. Therefore, other factors affecting Kap β 2-PY-NLS binding affinity might also regulate Kap β 2 chaperone activity. One factor of particular interest is Arg methylation in RGG domains; a modification that is lost in FTD-FUS patients [118]. Indeed, hypomethylation promotes nuclear import of ALS-linked FUS variants with mutations in the PY-NLS [118]. Furthermore, Arg methylation of FUS also suppresses FUS LLPS and SG partitioning [11,12] (Figure 4B). Arg methylation inhibits FUS LLPS by disrupting cation- π or π - π interactions between arginine residues in the C-terminal RGG domains and tyrosine residues in the N-terminal PrLD, which drive FUS LLPS [11,12,69,70]. Direct binding of Kap β 2 to arginine residues in the RGG domains of FUS contributes to its chaperoning mechanism by disrupting cation- π or π - π interactions [11]. Interestingly, Kap β 2 has higher affinity for hypomethylated FUS, and its disaggregation activity is not impaired when FUS is hypomethylated [11,12]. Nonetheless, in FTD-FUS, Kap β 2 is mislocalized to cytoplasmic FUS inclusions indicating that the chaperone or disaggregation activity of Kap β 2 is somehow overwhelmed or dysregulated [119]. It will be interesting to study the effect of other cargo post-translational modifications (PTMs) on the activity of Kap β 2.

Concluding Remarks

We have established that NIRs inhibit spontaneous and seeded fibrillization of cargo RBPs with PrLDs, which could prevent pathological spreading by prion-like conformers in disease [10]. Moreover, NIRs dissolve fibrils and reverse aberrant phase transitions of cargo RBPs with PrLDs, which we suggest could also be neuroprotective [10]. Indeed, we found that increasing NIR concentrations antagonized neurodegeneration and toxicity caused by cargo RBPs with PrLDs [10]. Moreover, increased expression of NIRs can buffer toxicity caused by toxic DPRs in several model systems [82–84]. Thus, small molecules that increase the expression of NIRs or enhance their chaperone or disaggregation activity could be effective therapeutics for several presently intractable neurodegenerative disorders, including ALS, FTD, and MSP. Likewise, delivery of NIRs via **adeno-associated viruses (AAVs)** to afflicted neurons might represent another therapeutic opportunity.

Outstanding Questions

How are NIRs regulated? Kap β 2 and other NIRs can function to prevent and reverse phase separation. However, NIRs also colocalize with pathological aggregates in disease. Thus, it is possible that dysregulation of NIRs is another way by which neurodegeneration manifests. One common mechanism of regulation is altering expression levels. Are there specific transcription factors associated with NIR expression? Do NIR levels change under stress? Do NIR levels vary in specific neuronal populations? Do NIR levels explain selective neuronal vulnerability in ALS and FTD? Can we uncover small-molecule drugs that selectively increase NIR expression? Answering these questions will allow us to design more nuanced therapeutic strategies that leverage beneficial NIR functions.

What is the minimal functional unit of NIRs that confers chaperone or disaggregation activity? Given their repetitive structure, we may be able to design small peptides that replicate specific actions of the entire NIR. For example, a small series of HEAT repeats could be engineered to bind to specific domains or recognize PTMs to combat aberrant phases.

Can NIRs be evolved or engineered to recognize any aggregation-prone protein? NIRs have some degree of inherent promiscuity with respect to their binding partners. Therefore, it may be possible to apply engineering or directed evolution to uncover NIRs that can specifically disaggregate proteins such as α -synuclein, A β , tau, or polyglutamine.

In neurodegenerative disease, NIRs likely become overwhelmed and fail to counter excessive aggregation by cargo RBPs such as TDP-43, FUS, or hnRNPA1. Indeed, expression of some NIRs appears to be reduced in the brain of FTD patients [120]. Moreover, Kap β 2 is sequestered in cytoplasmic inclusions in FTD-FUS, which may limit Kap β 2 activity [121]. PTMs may also reduce interactions between NIRs and RBP cargo, and might also contribute to reduced NIR activity in disease [11,12,118]. Likewise, specific ALS-linked mutations such as FUS^{P525L} and FUS^{R495X} reduce or eliminate Kap β 2 binding [17,74]. Key future goals in precision medicine will focus on engineering NIRs with enhanced disaggregation activity against specific substrates, such as FUS^{P525L}, which display reduced affinity for Kap β 2 [17]. Likewise, isolation of small-molecule drugs that increase the affinity of Kap β 2 for FUS^{P525L} could also lead to therapeutics for severe forms of juvenile ALS caused by this mutation [60,122].

We have now established that the NLS can function as an antiaggregation and disaggregation signal in the cytoplasm [10]. However, many questions lie ahead (see Outstanding Questions). We suggest that NIRs function broadly in preventing and reversing the aggregation of their cargo in the cytoplasm. This possibility raises the question of whether other short linear motifs engaged by transport factors in various locales may serve as signals that enable transport-factor-mediated disaggregation. Importantly, signal-recognition particles display disaggregase activity specifically against their signal-bearing clients [123–125]. Thus, it will be important to determine whether signal-dependent disaggregation activity extends to other soluble transport factors such as peroxisomal import factors, guided entry of tail-anchored protein system component Get3, and nuclear-export factors. These agents may be critical in preventing and reversing aberrant phase transitions in multiple settings.

Acknowledgments

We thank Bo Lim (Linda) Lee and Hana Odeh for comments on the manuscript. This work was funded by the Ellison Medical Foundation (L.G.), American Federation for Aging Research (L.G.), Alzheimer's Association (L.G.), Life Extension Foundation (J.S.), ALS Association (J.S.), Department of Biochemistry and Biophysics Pilot Grant (J.S.), Target ALS (J.S. and L.G.), the Robert Packard Center for ALS Research at Johns Hopkins (J.S.), the Office of the Assistant Secretary of Defense for Health Affairs, through the Amyotrophic Lateral Sclerosis Research Program under award no. W81XWH-17-1-0237 (J.S.), and NIH grants T32GM008275 (C.M.F.), R01GM099836 (J.S.), and R21NS090205 (J.S.).

References

1. Soniat, M. and Chook, Y.M. (2015) Nuclear localization signals for four distinct karyopherin-beta nuclear import systems. *Biochem. J.* 468, 353–362
2. Lee, B.J. *et al.* (2006) Rules for nuclear localization sequence recognition by karyopherin beta 2. *Cell* 126, 543–558
3. Twyffels, L. *et al.* (2014) Transportin-1 and Transportin-2: protein nuclear import and beyond. *FEBS Lett.* 588, 1857–1868
4. Harrison, A.F. and Shorter, J. (2017) RNA-binding proteins with prion-like domains in health and disease. *Biochem. J.* 474, 1417–1438
5. King, O.D. *et al.* (2012) The tip of the iceberg: RNA-binding proteins with prion-like domains in neurodegenerative disease. *Brain Res.* 1462, 61–80
6. March, Z.M. *et al.* (2016) Prion-like domains as epigenetic regulators, scaffolds for subcellular organization, and drivers of neurodegenerative disease. *Brain Res.* 1647, 9–18
7. Shin, Y. and Brangwynne, C.P. (2017) Liquid phase condensation in cell physiology and disease. *Science* 357, eaaf4382
8. Gomes, E. and Shorter, J. (2018) The molecular language of membraneless organelles. *J. Biol. Chem.* 402Published online July 25, 2018. <http://dx.doi.org/10.1074/jbc.TM118.001192>
9. Boeynaems, S. *et al.* (2018) Protein phase separation: a new phase in cell biology. *Trends Cell Biol.* 28, 420–435
10. Guo, L. *et al.* (2018) Nuclear-import receptors reverse aberrant phase transitions of RNA-binding proteins with prion-like domains. *Cell* 173, 677–692.e20
11. Hofweber, M. *et al.* (2018) Phase separation of FUS is suppressed by its nuclear import receptor and arginine methylation. *Cell* 173, 706–719.e13
12. Qamar, S. *et al.* (2018) FUS phase separation is modulated by a molecular chaperone and methylation of arginine cation-pi interactions. *Cell* 173, 720–734.e15
13. Yoshizawa, T. *et al.* (2018) Nuclear import receptor inhibits phase separation of FUS through binding to multiple sites. *Cell* 173, 693–705.e22
14. Cook, A. *et al.* (2007) Structural biology of nucleocytoplasmic transport. *Annu. Rev. Biochem.* 76, 647–671
15. Kim, Y.H. *et al.* (2017) The molecular mechanism for nuclear transport and its application. *Anat. Cell Biol.* 50, 77–85
16. Chook, Y.M. and Blobel, G. (1999) Structure of the nuclear transport complex karyopherin-beta2-Ran x GppNHp. *Nature* 399, 230–237
17. Zhang, Z.C. and Chook, Y.M. (2012) Structural and energetic basis of ALS-causing mutations in the atypical proline-tyrosine nuclear localization signal of the Fused in Sarcoma protein (FUS). *Proc. Natl. Acad. Sci. U. S. A.* 109, 12017–12021

18. Chook, Y.M. *et al.* (2002) Uncoupling Kapbeta2 substrate dissociation and ran binding. *Biochemistry* 41, 6955–6966
19. Gorlich, D. *et al.* (1996) Identification of different roles for RanGDP and RanGTP in nuclear protein import. *EMBO J.* 15, 5584–5594
20. Kosugi, S. *et al.* (2009) Six classes of nuclear localization signals specific to different binding grooves of importin alpha. *J. Biol. Chem.* 284, 478–485
21. Gorlich, D. *et al.* (1996) A 41 amino acid motif in importin-alpha confers binding to importin-beta and hence transit into the nucleus. *EMBO J.* 15, 1810–1817
22. Weis, K. *et al.* (1996) The conserved amino-terminal domain of hSRP1 alpha is essential for nuclear protein import. *EMBO J.* 15, 1818–1825
23. Kobe, B. (1999) Autoinhibition by an internal nuclear localization signal revealed by the crystal structure of mammalian importin alpha. *Nat. Struct. Biol.* 6, 388–397
24. Gilchrist, D. and Rexach, M. (2003) Molecular basis for the rapid dissociation of nuclear localization signals from karyopherin alpha in the nucleoplasm. *J. Biol. Chem.* 278, 51937–51949
25. Rexach, M. and Blobel, G. (1995) Protein import into nuclei: association and dissociation reactions involving transport substrate, transport factors, and nucleoporins. *Cell* 83, 683–692
26. Freitas, N. and Cunha, C. (2009) Mechanisms and signals for the nuclear import of proteins. *Curr. Genomics* 10, 550–557
27. Lange, A. *et al.* (2007) Classical nuclear localization signals: definition, function, and interaction with importin alpha. *J. Biol. Chem.* 282, 5101–5105
28. Schmidt, H.B. and Gorlich, D. (2016) Transport selectivity of nuclear pores, phase separation, and membraneless organelles. *Trends Biochem. Sci.* 41, 46–61
29. Mikhaleva, S. and Lemke, E.A. (2018) Beyond the transport function of import receptors: what's all the FUS about? *Cell* 173, 549–553
30. Soniat, M. and Chook, Y.M. (2016) Karyopherin-beta2 recognition of a PY-NLS variant that lacks the proline-tyrosine motif. *Structure* 24, 1802–1809
31. Keller, B.A. *et al.* (2012) Co-aggregation of RNA binding proteins in ALS spinal motor neurons: evidence of a common pathogenic mechanism. *Acta Neuropathol.* 124, 733–747
32. Kim, H.J. *et al.* (2013) Mutations in prion-like domains in hnRNP A2/B1 and hnRNP A1 cause multisystem proteinopathy and ALS. *Nature* 495, 467–473
33. Lin, Y. *et al.* (2015) Formation and maturation of phase-separated liquid droplets by RNA-binding proteins. *Mol. Cell* 60, 208–219
34. Mateju, D. *et al.* (2017) An aberrant phase transition of stress granules triggered by misfolded protein and prevented by chaperone function. *EMBO J.* 36, 1669–1687
35. Molliex, A. *et al.* (2015) Phase separation by low complexity domains promotes stress granule assembly and drives pathological fibrillization. *Cell* 163, 123–133
36. Saha, S. and Hyman, A.A. (2017) RNA gets in phase. *J. Cell Biol.* 216, 2235–2237
37. Shorter, J. and Taylor, J.P. (2013) Disease mutations in the prion-like domains of hnRNP A1 and hnRNP A2/B1 introduce potent steric zippers that drive excess RNP granule assembly. *Rare Dis.* 1, e25200
38. Blokhuis, A.M. *et al.* (2013) Protein aggregation in amyotrophic lateral sclerosis. *Acta Neuropathol.* 125, 777–794
39. Guttinger, S. *et al.* (2004) Transportin2 functions as importin and mediates nuclear import of HuR. *Proc. Natl. Acad. Sci. U. S. A.* 101, 2918–2923
40. Putker, M. *et al.* (2013) Redox-dependent control of FOXO/DAF-16 by transportin-1. *Mol. Cell* 49, 730–742
41. Rebane, A. *et al.* (2004) Transportins 1 and 2 are redundant nuclear import factors for hnRNP A1 and HuR. *RNA* 10, 590–599
42. Buchan, J.R. and Parker, R. (2009) Eukaryotic stress granules: the ins and outs of translation. *Mol. Cell* 36, 932–941
43. Li, Y.R. *et al.* (2013) Stress granules as crucibles of ALS pathogenesis. *J. Cell Biol.* 201, 361–372
44. Protter, D.S. and Parker, R. (2016) Principles and properties of stress granules. *Trends Cell Biol.* 26, 668–679
45. Zhang, K. *et al.* (2018) Stress granule assembly disrupts nucleocytoplasmic transport. *Cell* 173, 958–971.e17
46. McGurk, L. *et al.* (2018) Poly(ADP-ribose) prevents pathological phase separation of TDP-43 by promoting liquid demixing and stress granule localization. *Mol. Cell* 71, 703–717
47. Sahoo, P.K. *et al.* (2018) Axonal G3BP1 stress granule protein limits axonal mRNA translation and nerve regeneration. *Nat. Commun.* 9, 3358
48. Riback, J.A. *et al.* (2017) Stress-triggered phase separation is an adaptive, evolutionarily tuned response. *Cell* 168, 1028–1040.e19
49. Boeynaems, S. *et al.* (2017) Phase separation of C9orf72 dipeptide repeats perturbs stress granule dynamics. *Mol. Cell* 65, 1044–1055.e5
50. Chen, L. and Liu, B. (2017) Relationships between stress granules, oxidative stress, and neurodegenerative diseases. *Oxid. Med. Cell. Longev.* 2017, 1809592
51. Naruse, H. *et al.* (2018) Molecular epidemiological study of familial amyotrophic lateral sclerosis in Japanese population by whole-exome sequencing and identification of novel HNRNPA1 mutation. *Neurobiol. Aging* 61, 255.e9–255.e16
52. Prpar Mihevc, S. *et al.* (2017) Nuclear trafficking in amyotrophic lateral sclerosis and frontotemporal lobar degeneration. *Brain* 140, 13–26
53. Shorter, J. (2017) Liquidizing FUS via prion-like domain phosphorylation. *EMBO J.* 36, 2925–2927
54. Wolozin, B. (2012) Regulated protein aggregation: stress granules and neurodegeneration. *Mol. Neurodegener.* 7, 56
55. Buchan, J.R. *et al.* (2013) Eukaryotic stress granules are cleared by autophagy and Cdc48/VCP function. *Cell* 153, 1461–1474
56. Lee, Y. *et al.* (2018) TIA1 variant drives myodegeneration in multisystem proteinopathy with SQSTM1 mutations. *J. Clin. Invest.* 128, 1164–1177
57. Mackenzie, I.R. *et al.* (2017) TIA1 mutations in amyotrophic lateral sclerosis and frontotemporal dementia promote phase separation and alter stress granule dynamics. *Neuron* 95, 808–816.e9
58. Kapeli, K. *et al.* (2017) Genetic mutations in RNA-binding proteins and their roles in ALS. *Hum. Genet.* 136, 1193–1214
59. Pak, C.W. *et al.* (2016) Sequence determinants of intracellular phase separation by complex coacervation of a disordered protein. *Mol. Cell* 63, 72–85
60. Conte, A. *et al.* (2012) P525L FUS mutation is consistently associated with a severe form of juvenile amyotrophic lateral sclerosis. *Neuromuscul. Disord.* 22, 73–75
61. Couthouis, J. *et al.* (2012) Evaluating the role of the FUS/TLS-related gene EWSR1 in amyotrophic lateral sclerosis. *Hum. Mol. Genet.* 21, 2899–2911
62. Couthouis, J. *et al.* (2011) A yeast functional screen predicts new candidate ALS disease genes. *Proc. Natl. Acad. Sci. U. S. A.* 108, 20881–20890
63. Taylor, J.P. (2015) Multisystem proteinopathy: intersecting genetics in muscle, bone, and brain degeneration. *Neurology* 85, 658–660
64. Renton, A.E. *et al.* (2014) State of play in amyotrophic lateral sclerosis genetics. *Nat. Neurosci.* 17, 17–23
65. Couthouis, J. *et al.* (2014) Targeted exon capture and sequencing in sporadic amyotrophic lateral sclerosis. *PLoS Genet.* 10, e1004704
66. Johnson, B.S. *et al.* (2009) TDP-43 is intrinsically aggregation-prone, and amyotrophic lateral sclerosis-linked mutations accelerate aggregation and increase toxicity. *J. Biol. Chem.* 284, 20329–20339
67. Sun, Z. *et al.* (2011) Molecular determinants and genetic modifiers of aggregation and toxicity for the ALS disease protein FUS/TLS. *PLoS Biol.* 9, e1000614

68. Kato, M. *et al.* (2012) Cell-free formation of RNA granules: low complexity sequence domains form dynamic fibers within hydrogels. *Cell* 149, 753–767
69. Wang, J. *et al.* (2018) A molecular grammar governing the driving forces for phase separation of prion-like RNA binding proteins. *Cell* 174, 688–699.e16
70. Bogaert, E. *et al.* (2018) Molecular dissection of FUS points at synergistic effect of low-complexity domains in toxicity. *Cell Rep.* 24, 529–537.e4
71. Patel, A. *et al.* (2015) A liquid-to-solid phase transition of the ALS protein FUS accelerated by disease mutation. *Cell* 162, 1066–1077
72. Murray, D.T. *et al.* (2017) Structure of FUS protein fibrils and its relevance to self-assembly and phase separation of low-complexity domains. *Cell* 171, 615–627.e16
73. Murakami, T. *et al.* (2015) ALS/FTD mutation-induced phase transition of FUS liquid droplets and reversible hydrogels into irreversible hydrogels impairs RNP granule function. *Neuron* 88, 678–690
74. Dormann, D. *et al.* (2010) ALS-associated fused in sarcoma (FUS) mutations disrupt Transportin-mediated nuclear import. *EMBO J.* 29, 2841–2857
75. Liu, Q. *et al.* (2016) Whole-exome sequencing identifies a missense mutation in hnRNPA1 in a family with flail arm ALS. *Neurology* 87, 1763–1769
76. Kim, H.J. and Taylor, J.P. (2017) Lost in transportation: nucleocytoplasmic transport defects in ALS and other neurodegenerative diseases. *Neuron* 96, 285–297
77. Jovicic, A. *et al.* (2016) Nuclear transport dysfunction: a common theme in amyotrophic lateral sclerosis and frontotemporal dementia. *J. Neurochem.* 138, 134–144
78. Neumann, M. *et al.* (2009) A new subtype of frontotemporal lobar degeneration with FUS pathology. *Brain* 132, 2922–2931
79. Mackenzie, I.R. and Neumann, M. (2012) FET proteins in frontotemporal dementia and amyotrophic lateral sclerosis. *Brain Res.* 1462, 40–43
80. Neumann, M. *et al.* (2006) Ubiquitinated TDP-43 in frontotemporal lobar degeneration and amyotrophic lateral sclerosis. *Science* 314, 130–133
81. Chou, C.C. *et al.* (2018) TDP-43 pathology disrupts nuclear pore complexes and nucleocytoplasmic transport in ALS/FTD. *Nat. Neurosci.* 21, 228–239
82. Freilbaum, B.D. *et al.* (2015) GGGGCC repeat expansion in C9orf72 compromises nucleocytoplasmic transport. *Nature* 525, 129–133
83. Jovicic, A. *et al.* (2015) Modifiers of C9orf72 dipeptide repeat toxicity connect nucleocytoplasmic transport defects to FTD/ALS. *Nat. Neurosci.* 18, 1226–1229
84. Zhang, K. *et al.* (2015) The C9orf72 repeat expansion disrupts nucleocytoplasmic transport. *Nature* 525, 56–61
85. Boeynaems, S. *et al.* (2016) *Drosophila* screen connects nuclear transport genes to DPR pathology in c9ALS/FTD. *Sci. Rep.* 6, 20877
86. Boeynaems, S. *et al.* (2016) Inside out: the role of nucleocytoplasmic transport in ALS and FTL. *Acta Neuropathol.* 132, 159–173
87. DeJesus-Hernandez, M. *et al.* (2011) Expanded GGGGCC hexanucleotide repeat in noncoding region of C9ORF72 causes chromosome 9p-linked FTD and ALS. *Neuron* 72, 245–256
88. Lagier-Tourenne, C. *et al.* (2013) Targeted degradation of sense and antisense C9orf72 RNA foci as therapy for ALS and frontotemporal degeneration. *Proc. Natl. Acad. Sci. U. S. A.* 110, E4530–E4539
89. Zu, T. *et al.* (2011) Non-ATG-initiated translation directed by microsatellite expansions. *Proc. Natl. Acad. Sci. U. S. A.* 108, 260–265
90. Gitler, A.D. and Tsuiji, H. (2016) There has been an awakening: emerging mechanisms of C9orf72 mutations in FTD/ALS. *Brain Res.* 1647, 19–29
91. Lee, H.G. *et al.* (2006) Aberrant localization of importin alpha1 in hippocampal neurons in Alzheimer disease. *Brain Res.* 1124, 1–4
92. Sheffield, L.G. *et al.* (2006) Nuclear pore complex proteins in Alzheimer disease. *J. Neuropathol. Exp. Neurol.* 65, 45–54
93. Gasset-Rosa, F. *et al.* (2017) Polyglutamine-expanded huntingtin exacerbates age-related disruption of nuclear integrity and nucleocytoplasmic transport. *Neuron* 94, 48–57.e4
94. Grima, J.C. *et al.* (2017) Mutant huntingtin disrupts the nuclear pore complex. *Neuron* 94, 93–107.e6
95. Lu, T. *et al.* (2004) Gene regulation and DNA damage in the ageing human brain. *Nature* 429, 883–891
96. Mertens, J. *et al.* (2015) Directly reprogrammed human neurons retain aging-associated transcriptomic signatures and reveal age-related nucleocytoplasmic defects. *Cell Stem Cell* 17, 705–718
97. Pujol, G. *et al.* (2002) Age-associated reduction of nuclear protein import in human fibroblasts. *Biochem. Biophys. Res. Commun.* 294, 354–358
98. Woerner, A.C. *et al.* (2016) Cytoplasmic protein aggregates interfere with nucleocytoplasmic transport of protein and RNA. *Science* 351, 173–176
99. Ederle, H. *et al.* (2018) Nuclear egress of TDP-43 and FUS occurs independently of Exportin-1/CRM1. *Sci. Rep.* 8, 7084
100. Pinarbasi, E.S. *et al.* (2018) Active nuclear import and passive nuclear export are the primary determinants of TDP-43 localization. *Sci. Rep.* 8, 7083
101. Shi, K.Y. *et al.* (2017) Toxic PRN poly-dipeptides encoded by the C9orf72 repeat expansion block nuclear import and export. *Proc. Natl. Acad. Sci. U. S. A.* 114, E1111–E1117
102. Shorter, J. (2016) Engineering therapeutic protein disaggregases. *Mol. Biol. Cell* 27, 1556–1560
103. Shorter, J. (2017) Designer protein disaggregases to counter neurodegenerative disease. *Curr. Opin. Genet. Dev.* 44, 1–8
104. Jackrel, M.E. *et al.* (2014) Potentiated Hsp104 variants antagonize diverse proteotoxic misfolding events. *Cell* 156, 170–182
105. Jackrel, S. *et al.* (2015) Nuclear import factor transportin and arginine methyltransferase 1 modify FUS neurotoxicity in *Drosophila*. *Neurobiol. Dis.* 74, 76–88
106. Milles, S. *et al.* (2013) Facilitated aggregation of FG nucleoporins under molecular crowding conditions. *EMBO Rep.* 14, 178–183
107. Odeh, H.M. *et al.* (2018) The SUMO-specific isopeptidase SENP2 is targeted to intracellular membranes via a predicted N-terminal amphipathic alpha-helix. *Mol. Biol. Cell* 29, 1878–1890
108. Sousa, R. *et al.* (2016) Clathrin-coat disassembly illuminates the mechanisms of Hsp70 force generation. *Nat. Struct. Mol. Biol.* 23, 821–829
109. De Los Rios, P. and Goloubinoff, P. (2016) Hsp70 chaperones use ATP to remodel native protein oligomers and stable aggregates by entropic pulling. *Nat. Struct. Mol. Biol.* 23, 766–769
110. Xiang, S. *et al.* (2015) The LC domain of hnRNPA2 adopts similar conformations in hydrogel polymers, liquid-like droplets, and nuclei. *Cell* 163, 829–839
111. Murray, D.T. *et al.* (2018) Structural characterization of the D290V mutation site in hnRNPA2 low-complexity-domain polymers. *Proc. Natl. Acad. Sci. U. S. A.* 115, E9782–E9791
112. Monahan, Z. *et al.* (2017) Phosphorylation of the FUS low-complexity domain disrupts phase separation, aggregation, and toxicity. *EMBO J.* 36, 2951–2967
113. Burke, K.A. *et al.* (2015) Residue-by-residue view of *in vitro* FUS granules that bind the C-terminal domain of RNA polymerase II. *Mol. Cell* 60, 231–241
114. Maharana, S. *et al.* (2018) RNA buffers the phase separation behavior of prion-like RNA binding proteins. *Science* 360, 918–921
115. Hock, E.M. *et al.* (2018) Hypertonic stress causes cytoplasmic translocation of neuronal, but not astrocytic, FUS due to impaired transportin function. *Cell Rep.* 24, 987–1000.e7
116. Archbold, H.C. *et al.* (2018) TDP43 nuclear export and neurodegeneration in models of amyotrophic lateral sclerosis and frontotemporal dementia. *Sci. Rep.* 8, 4606

117. Hough, L.E. *et al.* (2015) The molecular mechanism of nuclear transport revealed by atomic-scale measurements. *eLife* 4, e10027
118. Dormann, D. *et al.* (2012) Arginine methylation next to the PY-NLS modulates Transportin binding and nuclear import of FUS. *EMBO J.* 31, 4258–4275
119. Neumann, M. *et al.* (2012) Transportin 1 accumulates specifically with FET proteins but no other transportin cargos in FTLD-FUS and is absent in FUS inclusions in ALS with FUS mutations. *Acta Neuropathol.* 124, 705–716
120. Nishimura, A.L. *et al.* (2010) Nuclear import impairment causes cytoplasmic trans-activation response DNA-binding protein accumulation and is associated with frontotemporal lobar degeneration. *Brain* 133, 1763–1771
121. Troakes, C. *et al.* (2013) Transportin 1 colocalization with FUS inclusions is not characteristic for ALS-FUS confirming disrupted nuclear import of mutant FUS and distinguishing it from FTLD with FUS inclusions. *Neuropathol. Appl. Neurobiol.* 39, 553–561
122. Zou, Z.Y. *et al.* (2013) *De novo* FUS gene mutations are associated with juvenile-onset sporadic amyotrophic lateral sclerosis in China. *Neurobiol. Aging* 34, 1312.e1–8
123. Jaru-Ampornpan, P. *et al.* (2013) Mechanism of an ATP-independent protein disaggregase: II: distinct molecular interactions drive multiple steps during aggregate disassembly. *J. Biol. Chem.* 288, 13431–13445
124. Jaru-Ampornpan, P. *et al.* (2010) ATP-independent reversal of a membrane protein aggregate by a chloroplast SRP subunit. *Nat. Struct. Mol. Biol.* 17, 696–702
125. Nguyen, T.X. *et al.* (2013) Mechanism of an ATP-independent protein disaggregase: I. structure of a membrane protein aggregate reveals a mechanism of recognition by its chaperone. *J. Biol. Chem.* 288, 13420–13430
126. Izauralde, E. *et al.* (1997) The asymmetric distribution of the constituents of the Ran system is essential for transport into and out of the nucleus. *EMBO J.* 16, 6535–6547
127. Apte, R.S. (2018) Gene therapy for retinal degeneration. *Cell* 173, 5