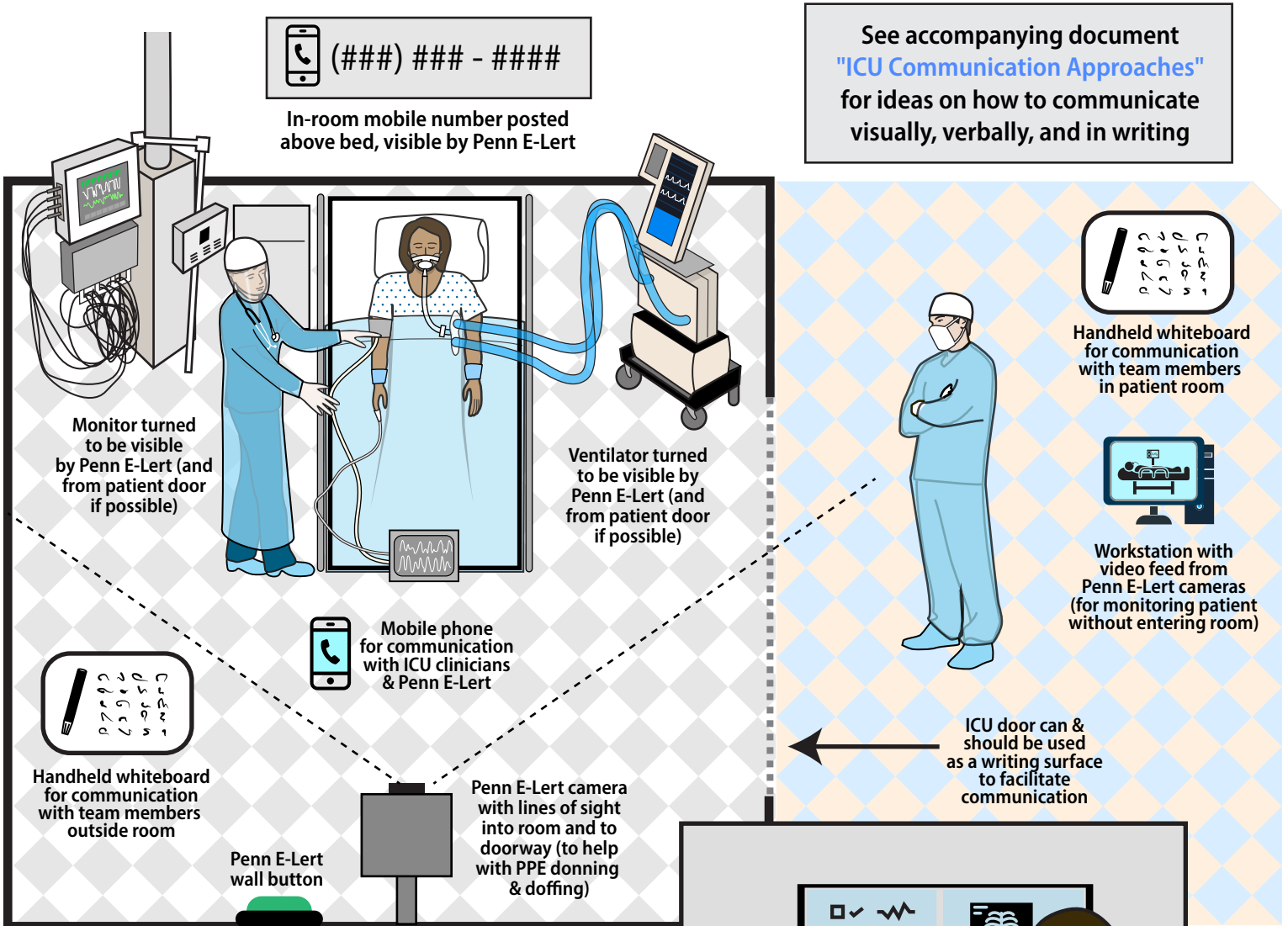
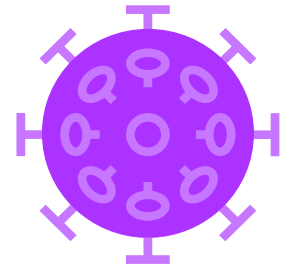


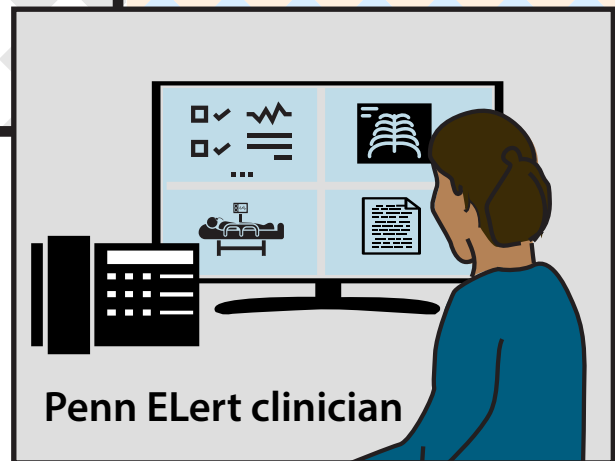
## ICU room layout for patients with known or suspected COVID-19

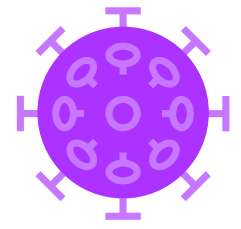
Last updated: March 24, 2020



This schematic shows an idealized room configuration to support safe and effective communication between bedside staff, ICU staff outside the patient's room and Penn E-Lert telecritical care staff.

For simplicity, some elements (e.g., isolation cart, in-room computer) are not shown.





## ICU communication approaches for patients with COVID-19 disease or patients under investigation (PUIs)

Last updated: March 20, 2020

### Core principle:

To safely care for our patients and our care teams, we need to communicate effectively. Any member of the care team should feel comfortable stopping, slowing down, or escalating to leadership as needed to facilitate safe care.



#### Visual communication

##### Communicate visually:

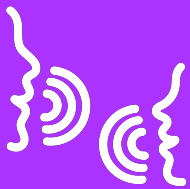
- Patient monitor should be visible to Penn ELert
- Penn ELert “buddy” can help with donning and doffing PPE
- Ventilator should be visible to Penn ELert and from outside the patient room

##### Personnel inside the patient’s room:

- ICU nurse
- ICU ordering provider



#### ICU patient room



#### Verbal communication

##### Communicate verbally:

**Note: It may be difficult to be heard when speaking through a PAPR or N95 mask**

- Use closed loop communication
- Use an in-room phone for communication with ICU staff outside the patient’s room & for communication with Penn ELert

##### Personnel in the ICU available to help:

- Additional nurses
- Respiratory therapist
- Clinical nurse specialist
- Ordering providers
- Respiratory therapist
- Nursing assistants



#### ICU outside patient room



#### Written communication

##### Communicate in writing:

- Dry erase board (“whiteboard”) inside the patient’s room **and** outside the patient’s room
- Write in-room telephone number above the patient’s bed (visible to Penn E-Lert) and on the patient room door (visible from outside)

##### Penn E-Lert personnel:

- Penn E-Lert nurse
- Penn E-Lert physician\*
- Penn E-Lert respiratory therapist\*

\* as available



#### Penn E-Lert tele-critical care

### Key contacts:

Infection control: \_\_\_\_\_

Infectious disease COVID-19 approval: \_\_\_\_\_

Materials Management (for PPE): \_\_\_\_\_

Penn E-Lert: (215) 893-7310