

# Welcome to our virtual waiting room!

While you wait for the session to start, please take time to:

1. Familiarize yourself with BlueJeans
2. Check your name- update first and last if incorrect
  - **1** in the picture
3. Visit the chat window
  - **2** in the picture
4. Visit the question & answers window
  - **3** in the picture

## BlueJeans Participant Screen

### Attendee View

(David Lee)

Entry banner alerts Attendee that nobody will be able to see or hear them.

Event title → Sales Kickoff

Speaker Volume →

Mute Speaker →

Full Screen →

Slider bar – drag to change the size of video and content

The event is live - You are in a view only role and can not be seen or heard [DISMISS](#)

Exit the event

Main (roster) view **1**

Chat w/ everyone **2**

Chat w/ Moderator

Questions & Answers **3**

Expand side navigation (display Presenter roster)

Settings (choose which speaker to use)

Year	RED	BLUE	GREEN	YELLOW
2004	0%	0%	0%	0%
2005	25%	10%	5%	0%
2006	50%	30%	15%	5%
2007	75%	50%	35%	15%
2008	90%	70%	55%	35%
2009	95%	75%	60%	40%
2010	90%	70%	55%	35%
2011	95%	80%	60%	40%









Penn Medicine

# **Lunch with Leaders LIVECast: Everything I Needed to Know, I Learned from 80s Pop Culture**

**March 11, 2021**



# Virtual Meeting Norms

Actively participate to make this engaging! You have several opportunities:

- Text your 80s pictures to **215-631-8819**.
- Respond to all polls/quizzes using your cellphone.
- Share your experience, add a comment, or ask for clarification using the **Chat feature**.
- Ask the facilitator questions in the **Q&A window**.

# Welcome to Lunch with Leaders

- ▶ Welcome
- ▶ What is *Lunch with Leaders*?

The screenshot shows the Penn Medicine website with a dark blue header. The header includes the Penn Medicine logo, a search bar, and the text 'UPHS COVID-19 Learning'. A red sidebar on the left contains a list of links: 'Curricula for Clinicians', 'Treatment and Testing Guidelines', 'Infection Control and PPE', 'Quick References', 'Telemedicine', 'Switchboard (PennKey protected)', 'Pennchart Education', and 'Patient and Family Communication'. The main content area is titled 'Lead Strong' and features a large 'LEAD STRONG' logo. The text on the page reads: 'As a Penn Medicine leader, we truly appreciate all you are doing to navigate these unprecedented times. Whether leading teams on the front lines or adapting to the new virtual environment, each and every one of you have stepped up like never before. This site is designed to provide ideas and best practices around leading yourself and your team during adversity. Remember that there is a potential for leadership at all levels. Now is the time to take action and make a difference. Use these resources plus your own creativity to design new ways to lead in tough times, great times and everything in between.' Below this text is a box with the 'LEAD STRONG' logo and the text: 'We are leading in a time of transformation. "Lunch with Leaders" is a one-hour, virtual leadership development series which Penn Medicine leaders can connect and share practical tips for leading effectively. Please join us live, Thursdays at noon! BYOL -bring your own lunch!'. The footer of the page is a dark blue bar with the Penn Medicine logo and the text 'Penn Medicine'.

# What's in the Mail?

*What did you enjoy about the last session?*

First time attending Lunch with Leaders today and was super impressed - great panel and engaging discussion.

You should become a prime time talk show host or moderator.

Watch out Oprah/Ellen/Graham Norton.

I will go back and watch the older recordings.

**Ellen Kim, MD**  
**Medical Director, Dermatology Clinic**  
**Professor of Dermatology**

**The honesty.** Sometimes we feel like our leaders are almost "superhuman" and **it's nice to know that we are not alone in the things we are feeling.**

The leaders and presenters were **real and authentic.** They were easy to relate to!

**Can't wait for the 80's session! You somehow manage to make me forget that these sessions are virtual - I truly feel connected to other leaders all across Penn, and this is invaluable.**



*Anonymous comments from the evaluation survey*



# Penn Medicine Book Club

*Open to All  
Penn Medicine  
Employees!*

## Penn Medicine Book Club

Wednesday, April 21 at 7 – 8 p.m.

Featuring UPHS CEO Kevin B. Mahoney and Mauro Guillén

**Register Today!**

*After registering, you will receive a calendar invite and a follow-up email with a link to order your book.*



Ignite your inner curiosity, interact with others and be #PennProud! The featured book is *2030: How Today's Biggest Trends will Collide and Reshape the Future of Everything* by Mauro Guillén. **UPHS CEO Kevin B. Mahoney and Mauro Guillén will facilitate the discussion.** A description of the book is below.

The Penn Medicine Book Club provides all employees with an opportunity to interact with and learn from others. **Please commit to reading the book prior to the session on Wednesday, April 21, to engage in thoughtful conversation.**

Register here: [BlueJeans Events | Attendee Registration](#)

HELP US GET TO THE

*Totally  
Tubular*

800s

\*percentile completed UBT

# Unconscious Bias Training: Due by April 1



Complete  
in 1-hour



Required for  
all faculty, staff  
and students



Must be  
completed by  
April 1, 2021

ENTITY	10-DAY CHANGE	TOTAL COMPLIANCE
PSOM	+4.5%	65.3%
UPHS	+15.3%	65.2%
TOTAL	+12.9%	65.2%

## Penn Medicine Team Goal Metrics:

(as a % of all Penn Medicine faculty, students and staff)

Threshold: 80%

Target: 85%

High Performance: 90%

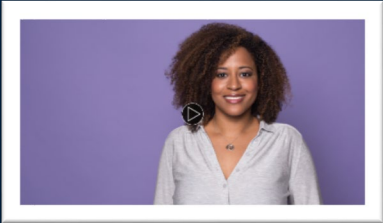
Updated March 11, 2021

Data may be 24-48 hours behind status in Knowledge Link



# KNOWLEDGE LINK

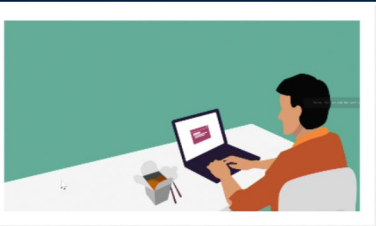
## Communicating with Empathy



## Learn Emotional Intelligence, the Key Determiner of Success

Explore Emotional Intelligence  
The Key Distinguisher Between  
Average and Outstanding Performers

## Managing Virtual Teams



## Logging into Knowledge Link just got easier!

Knowledge Link users will have the option to log in with their UPHS or LGH credentials (i.e. network login) in addition to Pennkey.

For more information about this upgrade [review this job aid and list of frequently asked questions.](#)

**A**

**B**

**C**

**D**

If LGH, select LGH here

**E**

(This appears only if you are not on the Penn network)

# Today's Objectives

- ▶ Travel back to the 80s and discuss learnings from the decade that shaped us.
- ▶ Hear experiences, stories and insights on how leaders have applied learnings from the past to navigate their personal leadership journeys.
- ▶ Connect with others and share ideas about leading at Penn Medicine drawing on lessons from the 80s.
- ▶ Have fun!

# Lunch with Leaders Guest



**Chris Clews**

**Author | Speaker  
80s Pop Culture Guy**





# The Outsiders



Credit: Photo 12 / Alamy Stock Photo

**“You still have a lot of time to  
make yourself be what you want.”  
– Johnny Cade**

**No matter your age or station in life,  
Go Create **You**.**



# Participate in Poll Everywhere Quiz



Using your cell phone,  
text “pennmedicine918” to  
“22333”

2 points for every correct answer –  
keep track!

Respond at **Pollev.com/pennmedicine918**

Text **PENNMEDICINE918** to **22333** once to join, then **A, B, or C**

# Which 1984 film starred Tom Hanks and Daryl Hannah ?

**A**

Big

**B**

Splash

**C**

The Money  
Pit



When poll is active, respond at **PollEv.com/pennmedicine918**

Text **PENNMEDICINE918** to **22333** once to join

# What is the name of Eddie Murphy's character in the Beverly Hills Cop film series?

---

Axel Foley

Billy  
Rosewood

Victor  
Maitland

# #80sRock



**Debbie Foster**  
Senior Director,  
Internal CORP  
Communications

**1982**  
**Rocking the knee-  
high socks!**



**Allison P Wilson-Maher**  
Vice President Real Estate  
and Architecture, CORP

My sister and me with our original “Little People” the genuine predecessors to the mass-produced Cabbage Patch Kids. I still have mine - her name is Jenny Lynn, given at “birth” to her by Babyland General Hospital in Cleveland, GA.  
Around my 10th birthday

# Coming to America



Credit: Pictorial Press Ltd / Alamy Stock Photo

**“When you think of garbage,  
think of Akeem.”**  
- Prince Akeem

**Unearned Leadership Creates Pleasers.**  
**Earned Leadership Creates Believers.**



**Babyland General Hospital was the "birthplace" of which popular children's doll?**

---

Strawberry  
Shortcake

Polly  
Pocket

Cabbage  
Patch Kids

**In the WrestleMania in 1985, who was Hulk Hogan's tag team partner in the main match?**

---

Randy  
Savage

Mr. T

Ric Flair

# #80sPastLwLGuests



**Craig  
Loundas**



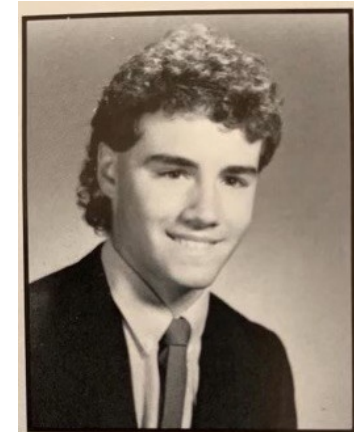
**Chris  
Miller**



**Beth Johnston**

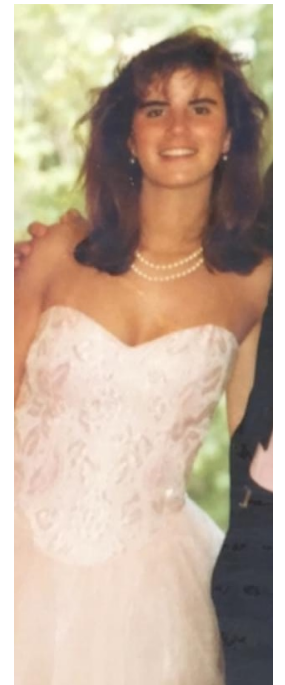


**Monica Heuer**



**Mike  
Posencheg**

Mike Posencheg  
“... sometimes we live our  
lives in chains and never know  
we have the key.”



**Carolyn  
Hewson**



**Bob Challender**



**Laura Porter**



**Tami Montroy**  
On the right sister

**Gretchen  
Kolb**





# The Karate Kid



Credit: Columbia Pictures / Delphi II Productions

**“Don’t forget to **breathe**...  
Very important.”**  
- Mr. Miyagi

**Stress is like dehydration.**  
**Once you realize you have it,**  
**it’s **too late**.**

# Aliens



Credit: 20<sup>th</sup> Century Fox/Brandywine Productions

**“They can bill me.”**  
- Ellen Ripley

**Strong** leaders don't waver.  
They will always take decisive action  
to **protect** their team regardless of  
the **personal consequences** they may  
ultimately face.

# Who had a hit with "Jessie's Girl"?

---

Bruce  
Springsteen

Rick  
Springfield

WHAM!

**Which actress featured in Bruce Springsteen's "Dancing in the Dark" music video?**

---

Courtney  
Cox

Drew  
Barrymore

Sally Field



# #80sMusic



**George Iyooob**  
Clinical Director, PPMC Nursing

**Prom in the 80s.**  
Theme song “Sea of Love” by Robert Plant



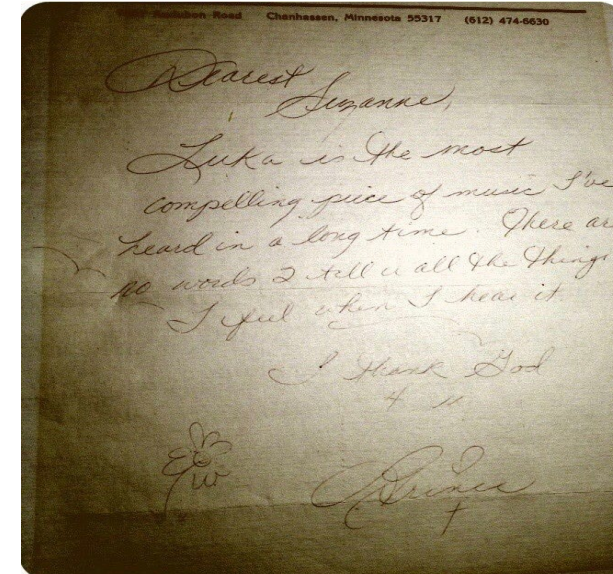
**Fern Nibauer-Cohen**  
Director Pt Engagement  
and Program Dev  
Radiation Oncology

Circa 1986ish  
Living in London and **on my way to see the Cure**. Love the 80's!  
Tenex in the hair.

# Prince and Suzanne Vega



Credit: AF archive / Alamy Stock Photo



The **difference** between those that **rule** and those that **lead**.  
Leaders **share** the stage.

When poll is active, respond at **PollEv.com/pennmedicine918**

Text **PENNMEDICINE918** to **22333** once to join

**"Thank You for Being a Friend" was the theme song for  
which TV show?**

---

Family Ties

Golden Girls

Three's  
Company



# #80sKids



**Kellie Wilson**  
Patient Experience  
Advisor, LGH

In acid jeans with  
family

**Kylie Todaro**  
OD consultant, Change  
Management, PMA, Corp

With Dad :)



**Melanie Woon**  
Pennfor Project

Trying to channel  
Madonna with a  
curly perm and  
fluorescents



# The Outsiders



Credit: United Archives GmbH/Alamy Stock

**“Stay Gold.”**  
- Johnny Cade

True **leaders** will keep their **ethical** and **moral** compasses intact even **sacrificing** themselves to ensure that their team, employees or family are **protected** from whatever is ailing the workplace.

# Special Cameo Appearance!





# #80sFavBigHair



**Susan Crow**  
Director  
Experience,  
Patient  
Engagement,  
LGH

**Mullet and acid  
wash go to  
homecoming**



**Caroline Coryell**  
Director Dermatology  
Lab Operations  
CPUP Dermatology

**Big hair,  
don't care!**

# Dead Poets Society



**“No matter what anybody tells  
you **words** and **ideas** can  
**change** the world.”  
- John Keating**

Credit: Touchstone Pictures/Silver Screen Partners IV/Buena Vista Pictures Distribution







***What 80s Pop Culture Teaches  
Us About Today's Workplace***  
Available on Amazon

**[Book #1](#)** (Yellow cover)

**[Book #2](#)** (Black cover)

*Click on the links for more details*



**@ChrisClews80s**



**@80spopculture**



**Chris.Clews.10**



**Chris Clews**

**954-224-3844**

**cclews1@gmail.com**

**chrisclews.com**

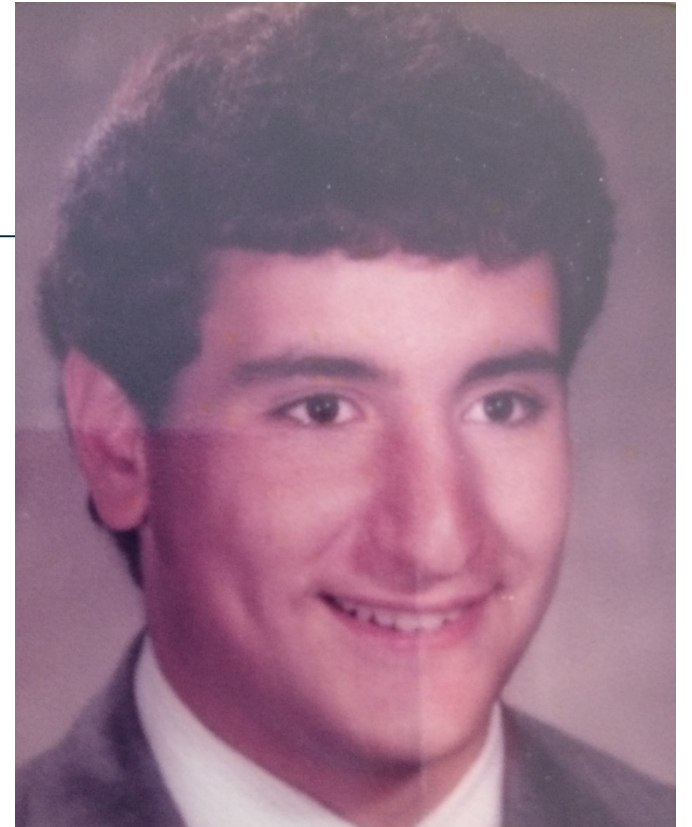
# Next Lunch with Leaders LIVECast

## ***Building Powerful Pairs***

---

March 25, 2021 at 12pm

- Our guests:**
- **Michael Parmacek, MD**, Chair,  
Department of Medicine
  - **Tom Gakis**, Chief Operating Officer,  
Department of Medicine



# Add the Series to your Outlook!

## *Upcoming Lunch with Leaders LIVEcasts*



**March 25** *Building Powerful Pairs*

**April 8** *Elegant Off-Boarding and Transition Planning Essentials*

*Stay tuned for more!*

Click [here](#) or visit [Lead Strong Site](#) to add the event series to your Outlook calendar.

# Exit Poll Everywhere

