

Welcome to our virtual waiting room!

While you wait for the session to start, please take time to:

1. Familiarize yourself with BlueJeans
2. Check your name- update first and last if incorrect
 - 1 in the picture
3. Visit the chat window
 - 2 in the picture
4. Visit the question & answers window
 - 3 in the picture

BlueJeans Participant Screen

Attendee View

(David Lee)

Entry banner alerts Attendee that nobody will be able to see or hear them.

Event title → Sales Kickoff

Speaker Volume →

Mute Speaker →

Full Screen →

Slider bar – drag to change the size of video and content

Exit the event

Main (roster) view 1

Chat w/ everyone 2

Chat w/ Moderator

Questions & Answers 3

Expand side navigation (display Presenter roster)

Settings (choose which speaker to use)

Year	RED	BLUE	GREEN	YELLOW
2004	10%	15%	20%	25%
2005	25%	30%	35%	40%
2006	40%	45%	50%	55%
2007	55%	60%	65%	70%
2008	70%	75%	80%	85%
2009	85%	90%	95%	100%
2010	90%	95%	100%	105%
2011	100%	105%	110%	115%



Lunch with Leaders LIVECast: **Growing Up Penn Medicine**

May 20, 2021



Virtual Meeting Norms

Actively participate to make this engaging! You have several opportunities:

- Respond to all polls using your phone.
- Ask the facilitator questions in the **Q&A window** unless directed otherwise.
- Share your experience, add a comment, or ask for clarification using the **Chat feature**. A moderator will monitor the chat.

Obtaining CME/CE Credit

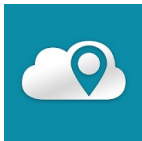
To received CME/CE credits:



Text the event code to (215) 398-6728



Login at <https://upenn.cloud-cme.com> and enter the event code via My CE/CME >> Claim Credit



CloudCME app – Institution Code UPENN; enter the event code via Claim Credit

Event Code:
72667

*You must have a profile in the system,
<https://upenn.cloud-cme.com>,
to get credit*

Welcome to Lunch with Leaders

- ▶ Welcome
- ▶ What is *Lunch with Leaders*?

The screenshot shows a web page from Penn Medicine's UPHS COVID-19 Learning portal. The page has a dark blue header with the Penn Medicine logo and a search bar. A red sidebar on the left contains a menu with items like 'Curricula for Clinicians', 'Treatment and Testing Guidelines', 'Infection Control and PPE', 'Quick References', 'Telemedicine', 'Switchboard (PennKey protected)', 'Pennchart Education', and 'Patient and Family Communication'. The main content area is titled 'Lead Strong' and features a paragraph of text, a 'LEAD STRONG' logo, and a 'Lunch with Leaders' section with a call to action.

Penn Medicine UPHS COVID-19 Learning

Search Our Site

Curricula for Clinicians

Treatment and Testing Guidelines

Infection Control and PPE

Quick References

Telemedicine

Switchboard (PennKey protected)

Pennchart Education

Patient and Family Communication

Lead Strong

As a Penn Medicine leader, we truly appreciate all you are doing to navigate these unprecedented times. Whether leading teams on the front lines or adapting to the new virtual environment, each and every one of you have stepped up like never before.

This site is designed to provide ideas and best practices around leading yourself and your team during adversity. Remember that there is a potential for leadership at all levels. Now is the time to take action and make a difference. Use these resources plus your own creativity to design new ways to lead in tough times, great times and everything in between.

LEAD STRONG

Lunch with Leaders

We are leading in a time of transformation. "Lunch with Leaders" is a one-hour, virtual leadership development series which Penn Medicine leaders can connect and share practical tips for leading effectively. **Please join us live, Thursdays at noon! BYOL –bring your own lunch!**

What's in the Mail?

What did you enjoy about the last session?

It's not easy to find content that is applicable and interesting to people at different levels in their careers. You seem to have developed something really great. **Seeing the list of all the videos that have been recorded, I have the same feeling I get when I find a new show on Netflix that I like and then see that there are five seasons** – the positive experience won't soon be exhausted.

Nikolas Buescher

Executive Director of Cancer Services
Penn Medicine Lancaster General Health

Nice to meet and see leaders across the health system who **before these sessions I would not have had the opportunity to meet.**

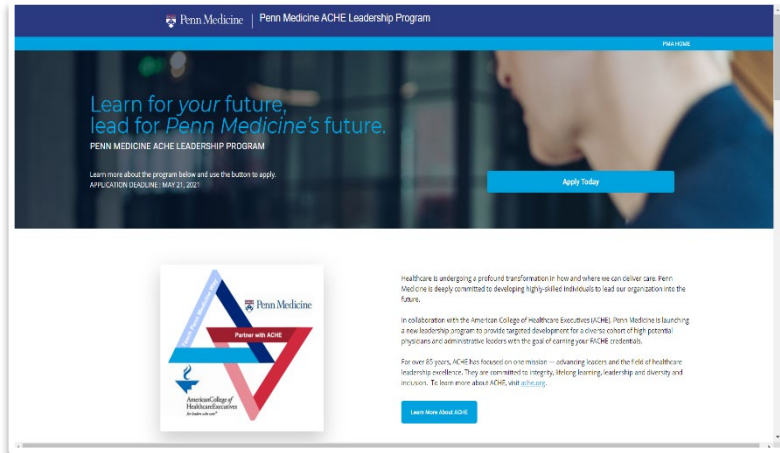


I have attended several of the Lead Strong sessions. All the insights that you and the speakers share is so inspiring and so valuable. **I really look forward to them.**

Hearing from the 2 different perspectives of the new CEO's. Style differences, but both successful.

Post-event feedback and anonymous comments from the evaluation survey

Penn Medicine ACHE Leadership Program: Apply by May 21!



[Penn Medicine ACHE \(American College of Healthcare Executives\) Leadership Program](#)

[Website](#): includes program overview, eligibility criteria, application form and FAQs



Watch the [virtual info session](#) with current Fellows of ACHE:

- **Allison Wilson-Maher**, Vice President, Real Estate, Design and Construction, Corporate
- **Aron Berman**, Assistant Executive Director, HUP
- **John J. Herman**, CEO, LGH
- **Michele Volpe**, CEO, PPMC

The session recording is posted on the [website](#).

30 Minute Coach: Sign Up for Sessions in June



Leading yourself:

How to use your self-evaluation and manager feedback to help shape the year ahead

Monday, June 7, 3:00PM

Tuesday, June 8, 8:30AM

Leading others:

How to find forms, tools and resources to make the evaluation process easier and more meaningful

Tuesday, June 8, 3:00PM

Wednesday, June 9, 8:30AM

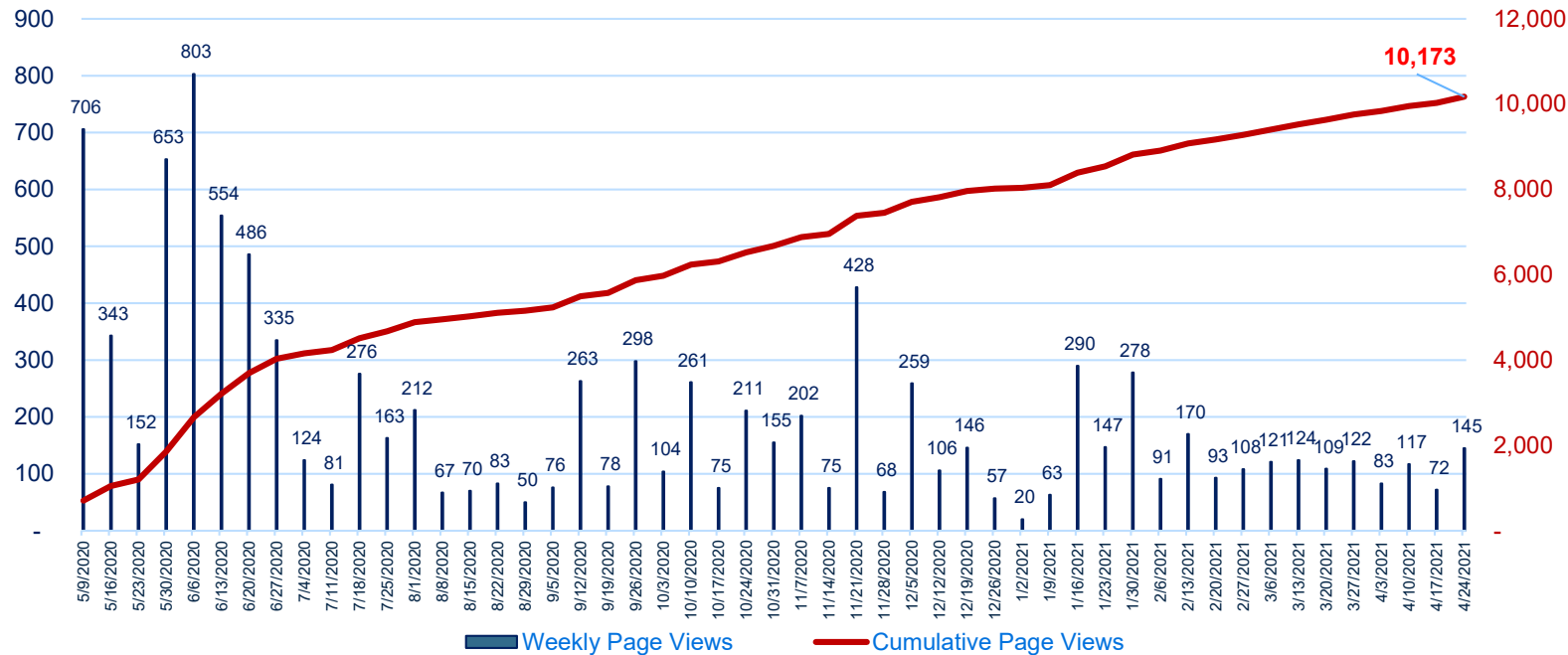
Since May 2020



Thank you!

Over 10,000 Hit to the Lead Strong Website

Page Views: Weekly vs. Cumulative



Region	Views	Region	Views
Pennsylvania	8,055	Davao Region	3
New Jersey	578	England	2
Texas	269	Arizona	2
Iowa	268	Maine	2
Wyoming	237	Minnesota	2
Virginia	177	Nevada	2
Washington	167	Oregon	2
Massachusetts	71	Vermont	2
Washington DC	54	Wisconsin	2
Maryland	52	Gauteng	2
New York	44	E. Dev. Region	2
Michigan	27	Buenos Aires	2
Delaware	25	Quebec	1
North Carolina	22	Geneva	1
California	21	Jilin	1
Georgia	16	Saxony	1
Ohio	15	West Bengal	1
Illinois	14	Quintana Roo	1
Florida	8	Selangor	1
(not set)	6	Colorado	1
Metro Manila	5	West Virginia	1
Connecticut	4	Ho Chi Minh City	1
Kansas	3	Central Luzon	1
Rhode Island	3	Punjab	1
South Carolina	3	County Dublin	1
Tennessee	3	St. Thomas	1

Top 10 Favorites!

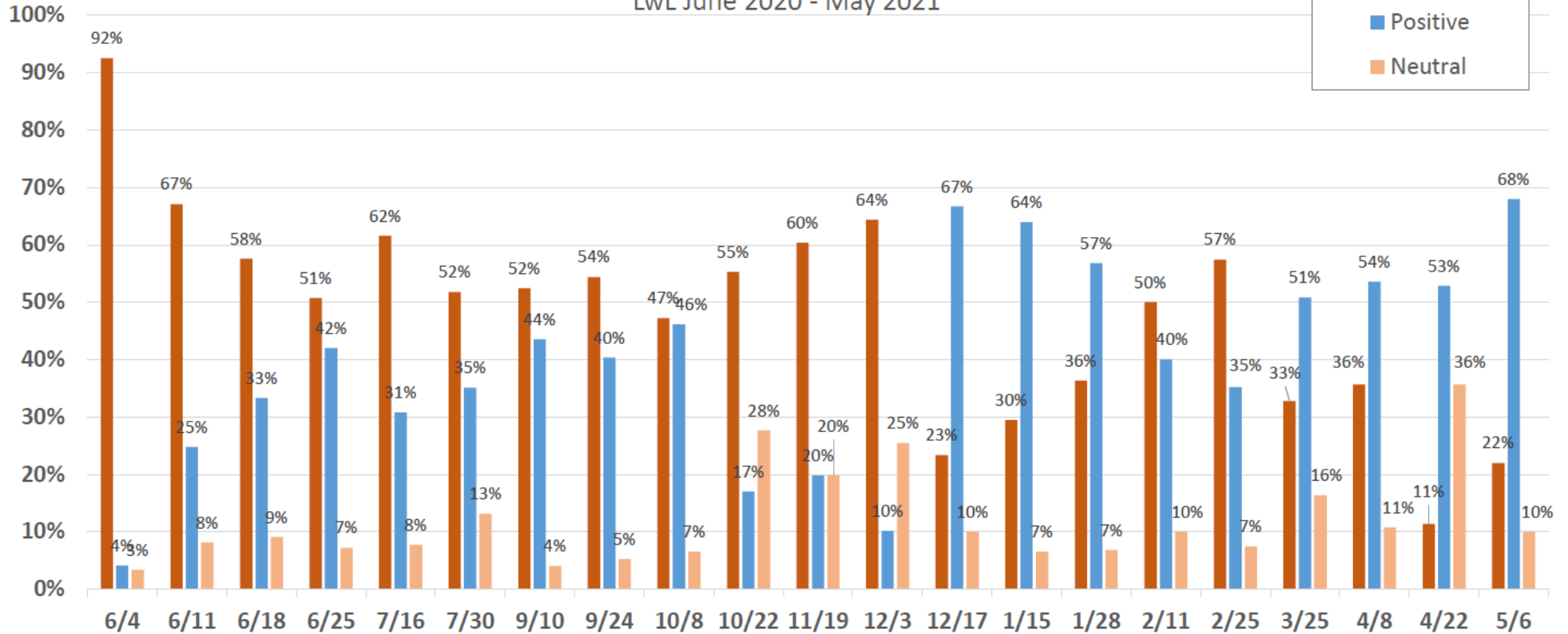
TOP 10 Billboard

Show #	Date	Session name	Total views/ replays
2	6/4/2020	Community dialogue on racial and social injustice	1,082
16	1/14/2021	Masterclass on Leading with Kevin Mahoney	879
17	1/28/2021	ACT Strategic Roadmap: Next Steps for Addressing Racism and Equity	487
5	6/25/2020	Top Tips for Meaningful Performance Reviews During Challenging Times	480
18	7/9/2020	The Blueprint for One Penn Medicine	480
8	9/10/2020	Being a Resonant Leader	476
23	9/24/2020	Managing Difficult Conversations Now	471
3	6/11/2020	Leading with emotional intelligence	457
6	7/16/2020	The Five Secrets to Successful Virtual Meetings & Training	453
12	7/30/2020	Financial acumen at Penn Medicine	442



Positive Trend in Self-reported Manager Emotions

Self-Reported Manager Emotions
LwL June 2020 - May 2021



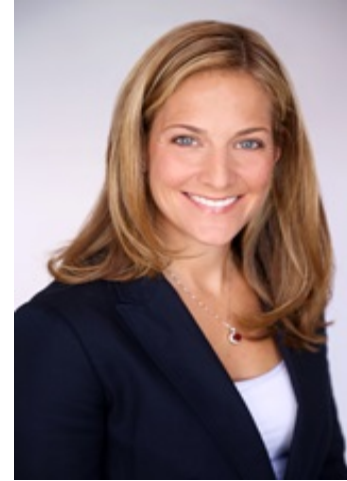
Today's Objectives

- ▶ Get an insider story on the evolution of Penn Medicine and how intentional decisions and key learnings from the past are shaping our organization now and serving us into the future
- ▶ Learn from their leadership experiences and inspiring career journeys
- ▶ Connect with others and share leadership tips with each other

Lunch with Leaders Guests



Peter D. Quinn, DMD, MD
Chief Physician Executive, PMMG
Schoenleber Professor of Oral and
Maxillofacial Surgery



Lori Gustave,
SVP, Business Development

Participate in Poll Everywhere

#1



#2

How long have you been with Penn Medicine?

< 1 year **A**

1 -5 years **B**

6 - 15 years **C**

16 - 24 years **D**

> 25 years **E**



Lori Gustave

Peter D. Quinn
DMD MD



Lori Gustave
Chief Administrative Officer
Penn Musculoskeletal Center



Over the years...



When poll is active, respond at pollev.com/pennmedicine918

Text **PENNMEDICINE918** to **22333** once to join

How long have you been with Penn Medicine?

< 1 year

1 -5 years

6 - 15 years

16 - 24 years

> 25 years

Tips for Mic-Dropping Presentations

June 3, 2021 at 12pm

Our guests

- **Mike Duncan**, President and CEO, Chester County Hospital
- **Dana Band**, External Expert on Effective Presentations



Add the Series to your Outlook!

Upcoming Lunch with Leaders LIVEcasts



June 20 **Creating High Performance Teams**
with Neil Ravitz and Andrea Wieland, PhD

July 1 **Innovation 101**
with Roy Rosin

July 15 **Redefining High Potentials**
with Mitch Schnall, MD, Chris Tierney and
Michelle Weitzman- Garcia, PhD

Stay tuned for more!

Click [here](#) or visit [Lead Strong Site](#) to add the event series to your Outlook calendar.

Exit Poll Everywhere

